



REF: # 9933

TORREVIEJA (TORREVIEJA CENTRO)



#### INFO

**PRICE:** 249.000 €

**PROPERTY TYPE:** Apartment

**CITY:** Torrevieja  
(Torrevieja centro)

**BEDROOMS:** 2

**Bathrooms:** 2

**Build ( m2 ):** 100

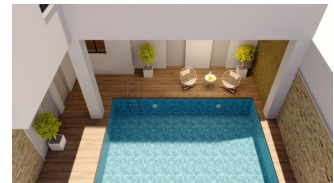
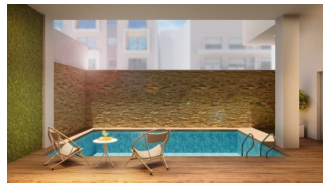
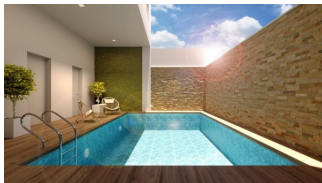
**Plot ( m2 ):** -

**Terrace ( m2 ):** 8

**Year:**

**Floor:** -

**Old price** -



#### DESCRIPTION

NEW BUILD APARTMENT IN TORREVIEJA only 200m from the beach. This 100m2 apartment consists of 2 bedrooms, 2 bathrooms, open plan kitchen with the lounge area, fitted wardrobes and an 8m2 terrace. It is located just 200 meters from Playa del Cura. There is a communal swimming pool, solarium and a sauna for you to enjoy. Torrevieja is a Spanish town in the province of Alicante, on the Costa Blanca with 300 days of sunshine a year and an average temperature of 20°C. It is known for its superb promenade, restaurants, weekly Friday market and the Habaneras shopping centre. It has a wide range of cultural and leisure activities all year round. Only 15 minutes drive is "La Zenia Boulevard" the largest shopping centre in the Alicante region, it's a one-stop destination for clothes, shoes and general supplies. No matter what you're after, chances are you won't walk out empty-handed. In addition to the original established Golf courses on the Orihuela Costa Villamartin, Las Ramblas, Real Campoamor and Las Colinas, Torrevieja area is now also well served with excellent courses such as La Finca, La Marquesa, Las Colinas, Lo Romero and Vistabella offering different golf experiences

with a variety of sea and mountain views. Alicante Airport is 45 minutes / 45kms drive away and Murcia (Corvera) is 55 mins / 68kms.

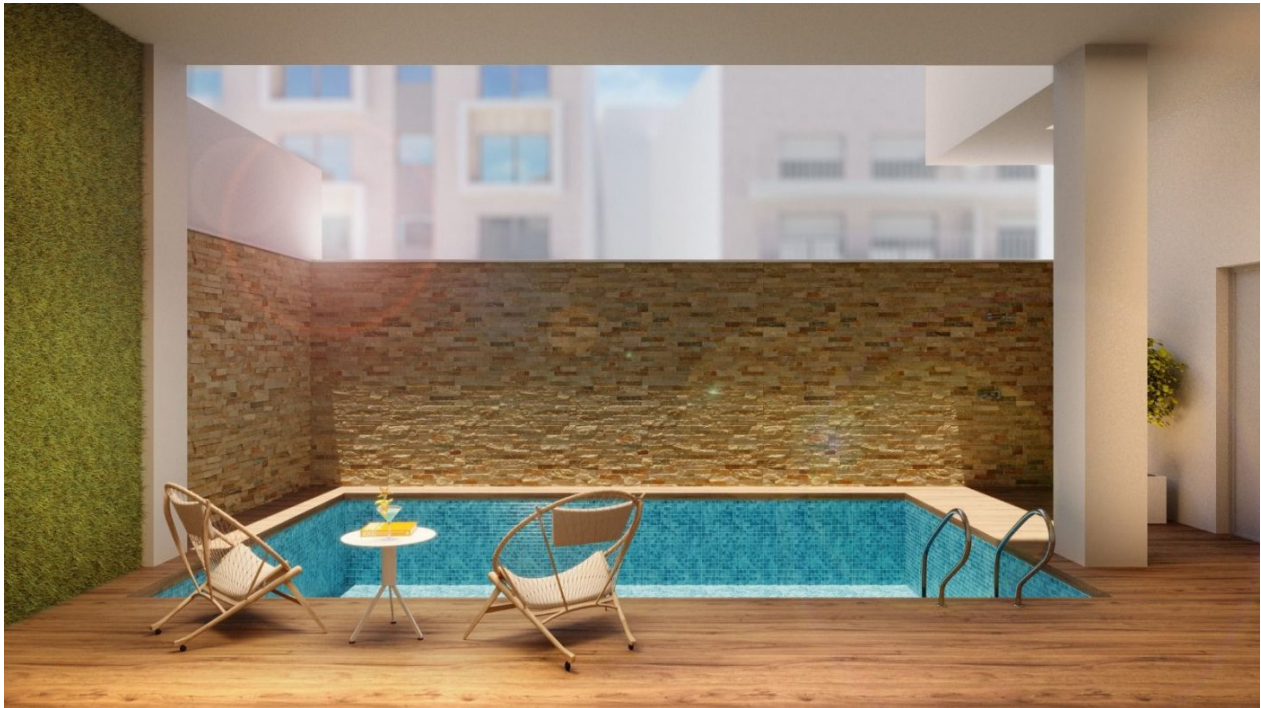


| STYLE  | VIEWS   | DISTANCE TO :   | MAIN LIVING AREA                                      |
|--|---|---|---|
| <ul style="list-style-type: none"><li>Modern</li></ul>       | <ul style="list-style-type: none"><li>Panoramic views</li></ul> | Beach : 200 m<br>Airport: 40 Km                                 | <ul style="list-style-type: none"><li>Sauna</li></ul> |
| KITCHEN  | GARDEN AND TERRACES   | EXTRA   |   |
| <ul style="list-style-type: none"><li>Open kitchen</li></ul> | <ul style="list-style-type: none"><li>Open terrace</li></ul>    | <ul style="list-style-type: none"><li>Reinforced door</li></ul> |   |

## PROPERTY GALLERY















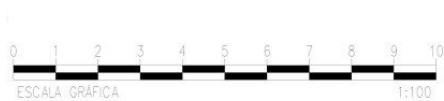




TIPO(1º,2º,3º y 4º)-B



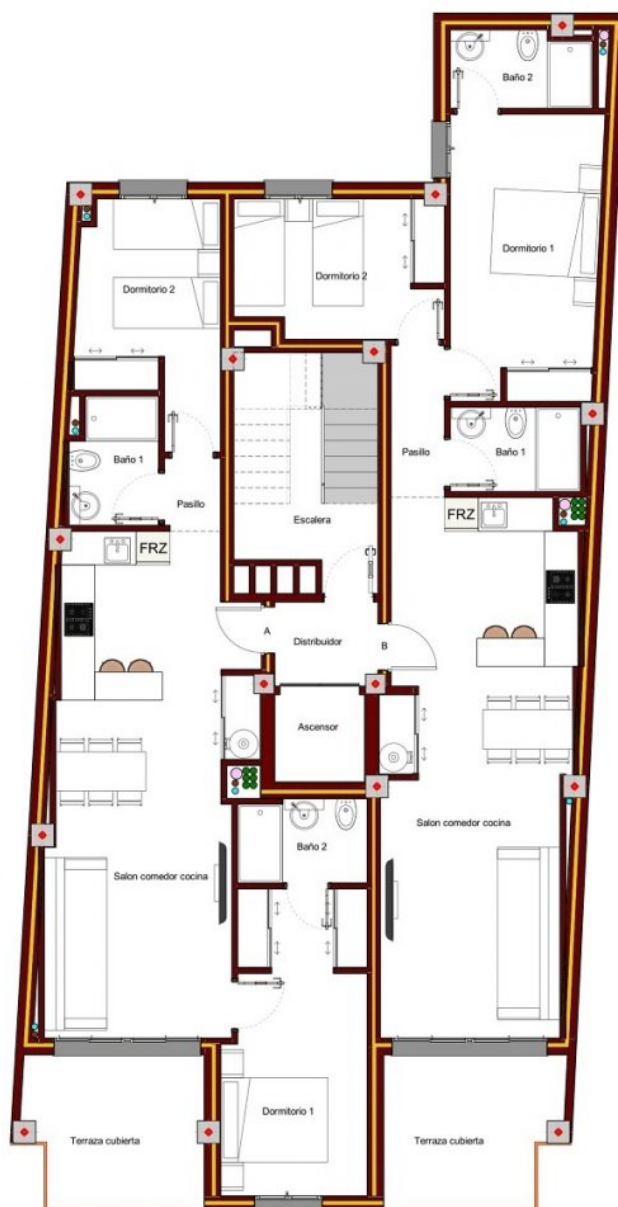
| TIPO-B<br>SUPERFICIES UTILES |                      |
|------------------------------|----------------------|
| Salon Comedor Cocina         | 31,09m <sup>2</sup>  |
| Dormitorio 1                 | 13,40m <sup>2</sup>  |
| Dormitorio 2                 | 9,00m <sup>2</sup>   |
| Baño 1                       | 3,47m <sup>2</sup>   |
| Baño 2                       | 3,37m <sup>2</sup>   |
| Pasillo                      | 2,57m <sup>2</sup>   |
| Terraza cubierta             | 8,10m <sup>2</sup>   |
| TOTAL SUP. UTIL              | 71,00m <sup>2</sup>  |
| TOTAL SUP. CONST+P.+ZC       | 100,26m <sup>2</sup> |



COM TIPO-B

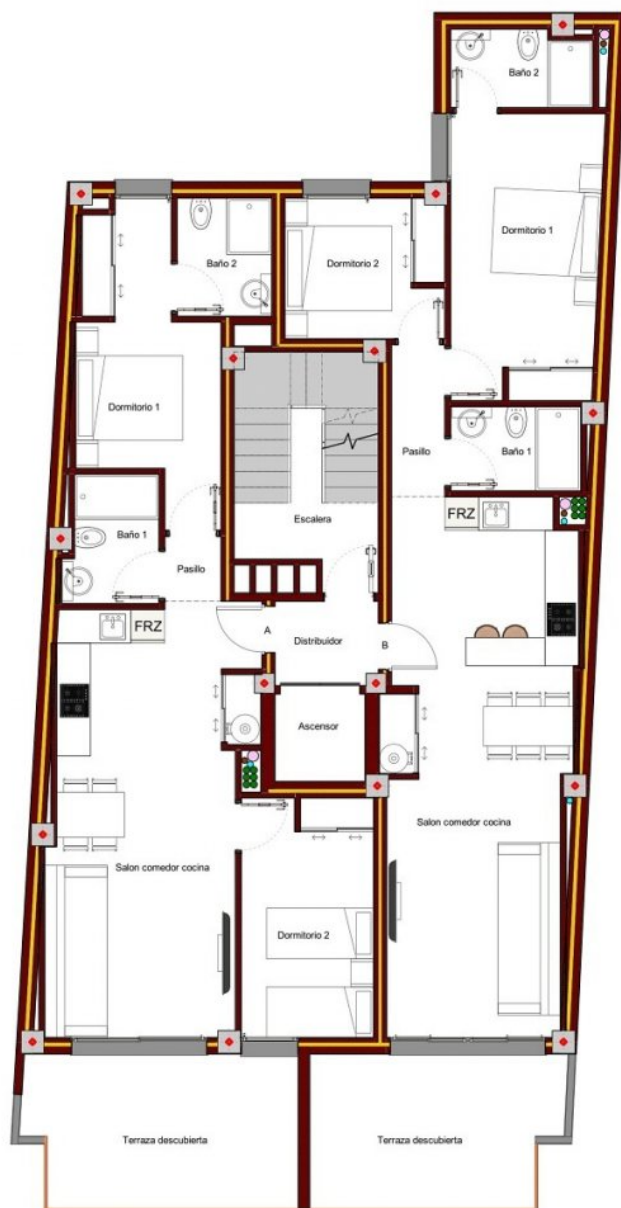


PLANTA BAJA

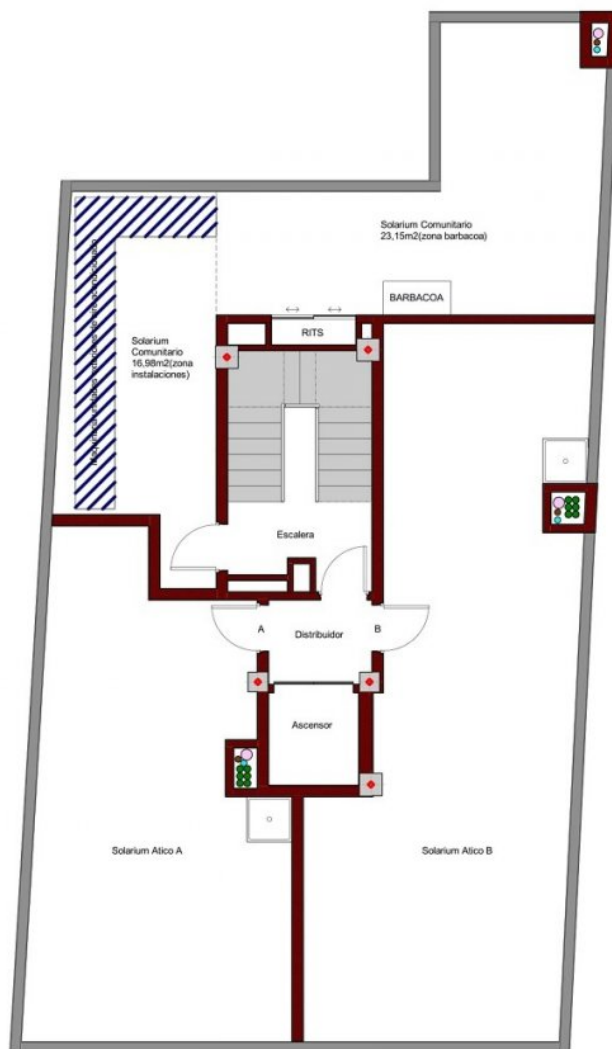


PLANTA TIPO





PLANTA ATICO



PLANTA CUBERTA









***"OUR EXPERIENCE IS YOUR GUARANTEE"***