



REF: # 9876

FINESTRAT



INFO

PRICE: 440.000 €

PROPERTY TYPE: Apartment

CITY: Finestrat

BEDROOMS: 2

Bathrooms: 2

Build (m2): 302

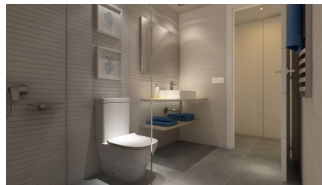
Plot (m2): -

Terrace (m2): -

Year: -

Floor: -

Old price -



DESCRIPTION

Fantastic development of duplex apartments with spectacular views of the benidorm skyline. The common areas are completed with a paddle tennis court, playground, biohealthy exercise area, gyms, garden areas for walking, canine gym, recreation rooms, coworking rooms, gourmet room, gazebo and heated pool. The houses have been equipped with large terraces overlooking the Mediterranean and large windows, which connect the outdoor areas with the interior, resulting in very spacious rooms with lots of natural light. On the terrace stands a modern lattice that sieves the sun's rays. These homes have 2/3 bedrooms and 2/3 bathrooms, kitchen equipped with appliances and integrated into the living room, a large garden, parking and basement with natural lighting and independent access.

ENERGETIC CERTIFIED



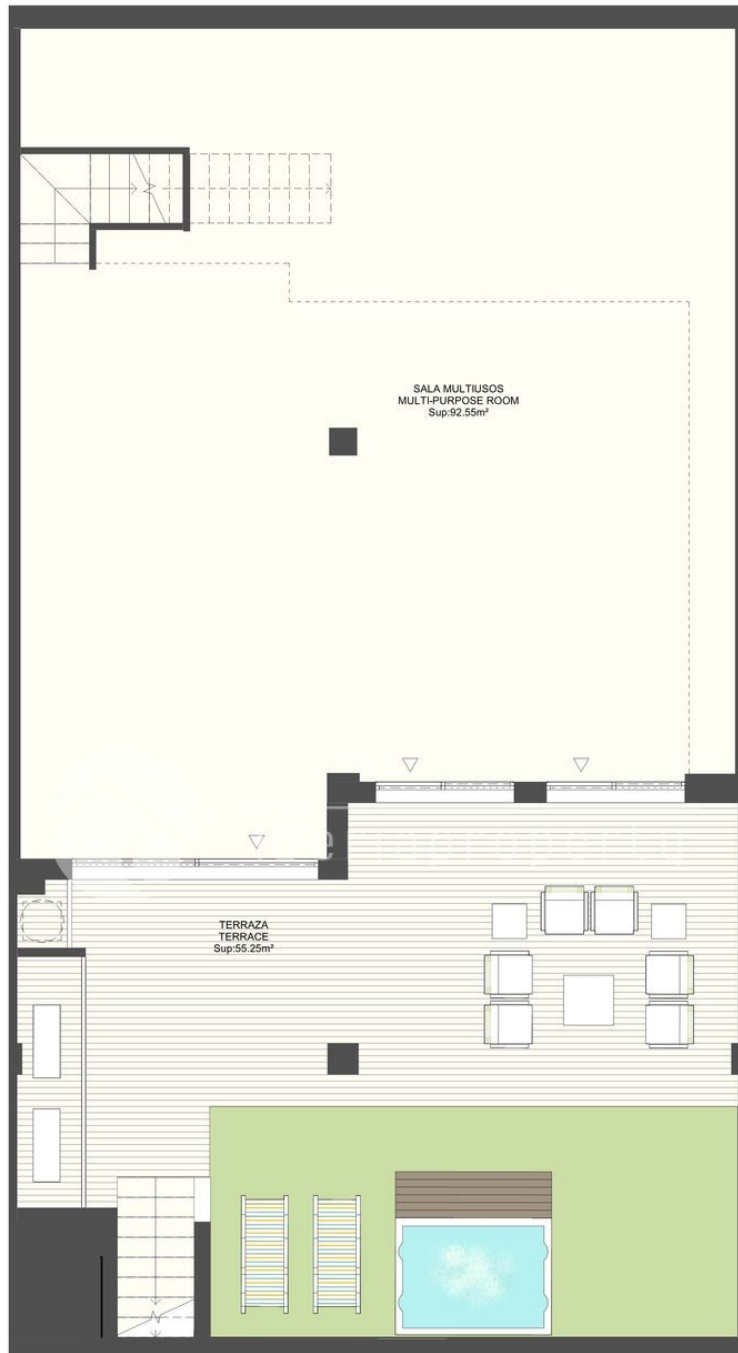
PROPERTY GALLERY











Bloque
3

Planta
0

Vivienda
C



TOTAL SUP. ÚTIL / LIVING AREA:

Sup.útil vivienda / Property:

Sup.útil planta sótano / basement:

Sup.útil terrazas y patios cubiertos / terrace_covered:

Sup.útil terrazas y patios descubiertos / terrace_uncovered:

TOTAL SUP. CONSTRUIDA C.T / BUILD AREA t.i :

261.81 m².

74.30 m².

92.55 m².

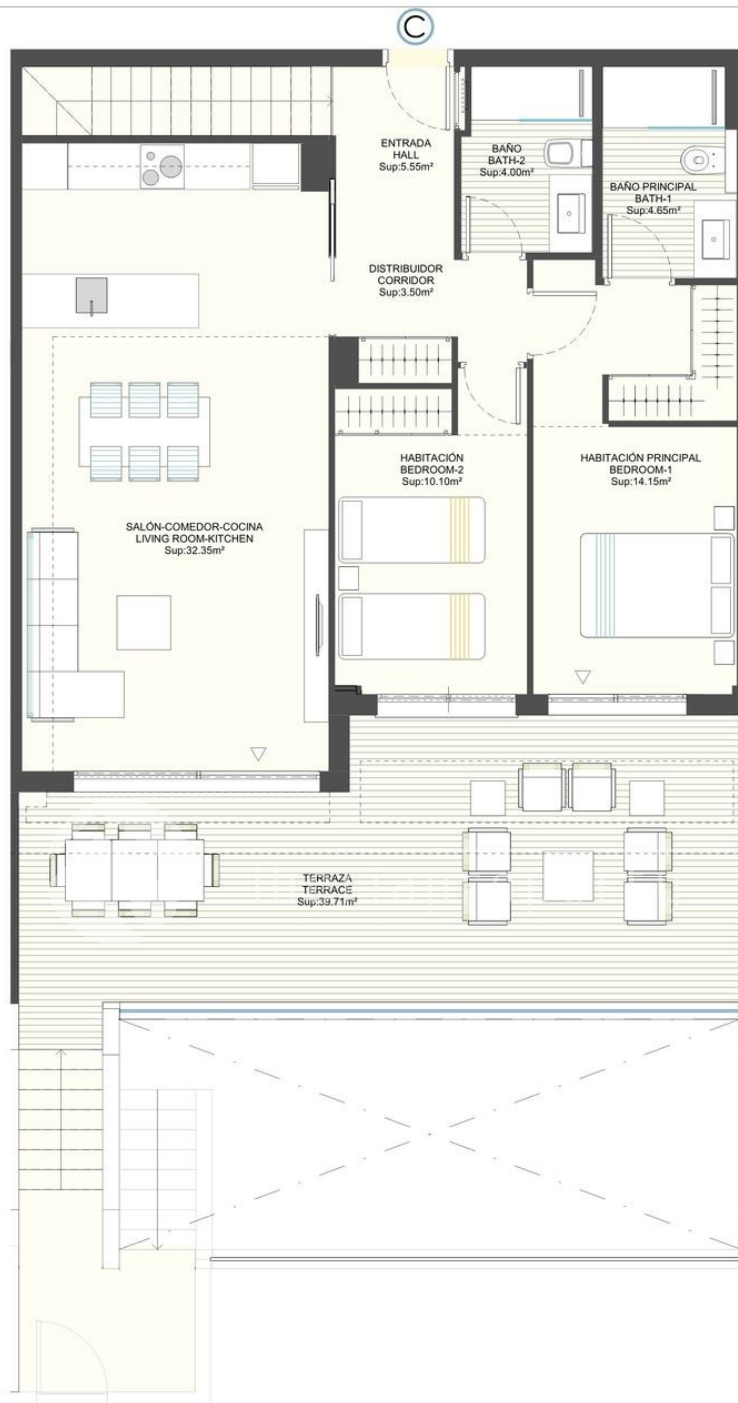
35.46 m².

59.50 m².

302.74 m².



PLANOS COMERCIALES: Superficies, medidas, configuración, lindes y demás, son los previstos, sujetos a posibles modificaciones por exigencias técnicas, jurídicas o comerciales. No se incluye en el precio ni bienes muebles, ni elementos de jardinería, Jacuzzi opcional.
COMMERCIAL FLOOR PLANS: Area, measurements, room distribution, boundaries and others may be subject to changes due to technical, legal or commercial reason. Furniture and gardening elements are not included. Jacuzzi optional.



Bloque
3

Planta
0

Vivienda
C



TOTAL SUP. ÚTIL / LIVING AREA:

Sup.útil vivienda / Property:

Sup.útil planta sótano / basement:

Sup.útil terrazas y patios cubiertos / terrace_covered:

Sup.útil terrazas y patios descubiertos / terrace_uncovered:

TOTAL SUP. CONSTRUIDA C.T / BUILD AREA t.i :

261.81 m².

74.30 m².

92.55 m².

35.46 m².

59.50 m².

302.74 m².



PLANOS COMERCIALES: Superficies, medidas, configuración, linderos y demás, son los previstos, sujetos a posibles modificaciones por exigencias técnicas, jurídicas o comerciales. No se incluye en el precio ni bienes muebles, ni elementos de jardinería, Jacuzzi opcional.
COMMERCIAL FLOOR PLANS: Area, measurements, room distribution, boundaries and others may be subject to changes due to technical, legal or commercial reason. Furniture and gardening elements are not included. Jacuzzi optional.

"OUR EXPERIENCE IS YOUR GUARANTEE"