



REF: # 9749

PILAR DE LA HORADADA (PUEBLO)



#### INFO

**PRICE:** 399.900 €

**PROPERTY TYPE:** Penthouse

**CITY:** Pilar De La Horadada (Pueblo)

**BEDROOMS:** 3

**Bathrooms:** 2

**Build ( m2 ):** 140

**Plot ( m2 ):** -

**Terrace ( m2 ):** 181

**Year:** -

**Floor:** -

**Old price** -



#### DESCRIPTION

**NEW BUILD MODERN RESIDENTIAL COMPLEX APARTMENTS PENTHOUSE IN PILAR DE LA HORADADA.** This beautiful and spacious 140m2 penthouse apartment consists of 3 bedrooms, 2 bathrooms and both a large 85m2 private terrace and 96m2 solarium. The complex has a large communal garden with pool, gym and playground for the kids. Each property has garage spaces and storerooms in the basement. Located in an unbeatable enclave within a large residential area of Pilar de la Horadada, it is a privileged place for families due to its easy access to all kinds of services and amenities. Pilar de la Horadada is a typical Spanish village in the most southern part of the Costa Blanca. The large main street has supermarkets, lots of shops, restaurants and bars and some lovely squares. The beautiful beaches of Torre de la Horadada and Mil Palmeras with fine sand promenade is just 5 minutes away. In addition to the original established Golf courses on the Orihuela Costa Villamartin, Las Ramblas, Real Campoamor and Las Colinas approximately 14km away, Pilar de la Horadada is also well served with the excellent course Lo Romero only

4.2km drive. The Airports of Corvera (Murcia) and Alicante are respectively 40 and 55 minutes away. The Airports of Corvera (Murcia) and Alicante are respectively 40 and 55 minutes away.



STYLE	VIEWS	DISTANCE TO :	PARKING
<ul style="list-style-type: none"><li>Modern</li></ul>	<ul style="list-style-type: none"><li>Panoramic views</li></ul>	Beach : 4 Km Airport: 50 Km	Garage no Cars : 2
MAIN LIVING AREA	GARDEN AND TERRACES	EXTRA	
<ul style="list-style-type: none"><li>Gym</li></ul>	<ul style="list-style-type: none"><li>Open terrace</li><li>Play Ground</li><li>Communal Garden</li></ul>	<ul style="list-style-type: none"><li>Reinforced door</li><li>Storage room</li></ul>	





















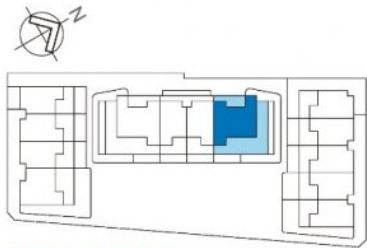




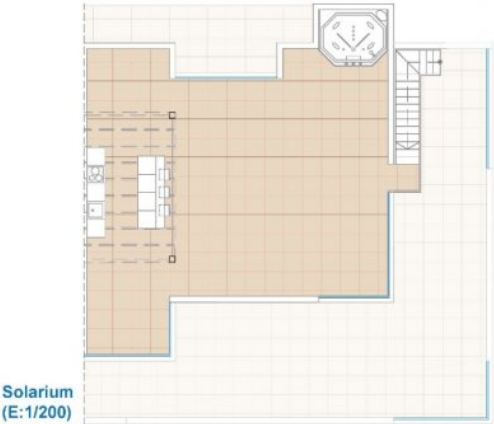
Room - Estancia	24
Living room - Kitchen (Estar - Cocina)	50,24
Laundry room (Galeria)	4,06
Bedroom 1 (Dormitorio 1)	12,26
Bedroom 2 (Dormitorio 2)	10,20
Bedroom 3 (Dormitorio 3)	11,06
Bathroom 1 (Baño 1)	3,43
Bathroom 2 (Baño 2)	3,14
Covered Terrace (Terraza Cubierta)	1,20
Uncovered Terrace (Terraza Descubierta)	91,03
Solarium (Solarium)	96,40
Common areas (Zonas Comunes)	3,54
Total Surface (Superficie total)	283,02



Second Floor/ Planta Segunda  
(E:1/100)

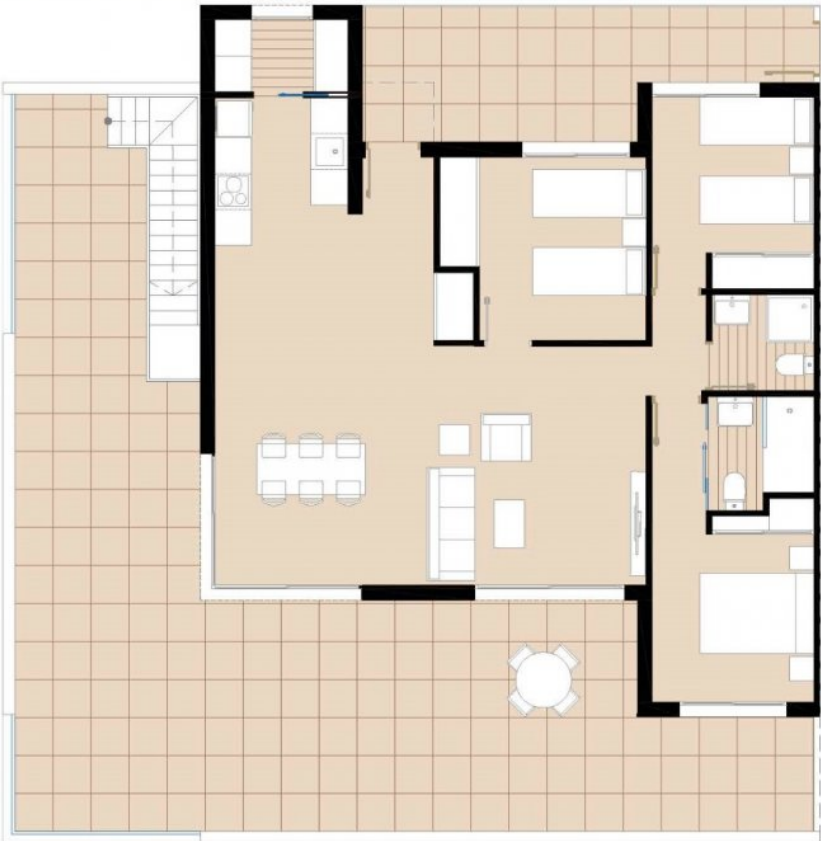


Complex / Complejo

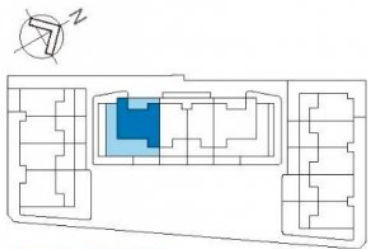


Solarium  
(E:1/200)

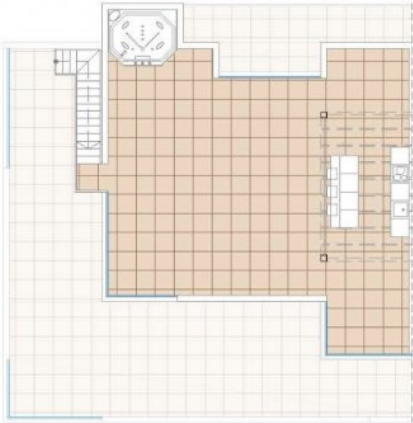
Room - Estancia	21
Living room - Kitchen (Estar - Cocina)	50,24
Laundry room (Galería)	4,06
Bedroom 1 (Dormitorio 1)	12,26
Bedroom 2 (Dormitorio 2)	10,20
Bedroom 3 (Dormitorio 3)	11,06
Bathroom 1 (Baño 1)	3,43
Bathroom 2 (Baño 2)	3,14
Covered Terrace (Terraza Cubierta)	1,20
Uncovered Terrace (Terraza Descubierta)	91,03
Solarium (Solarium)	96,40
Common areas (Zonas Comunes)	3,54
Total Surface (Superficie total)	283,02



Second Floor/ Panta Segunda  
(E:1/100)



Complex / Complejo



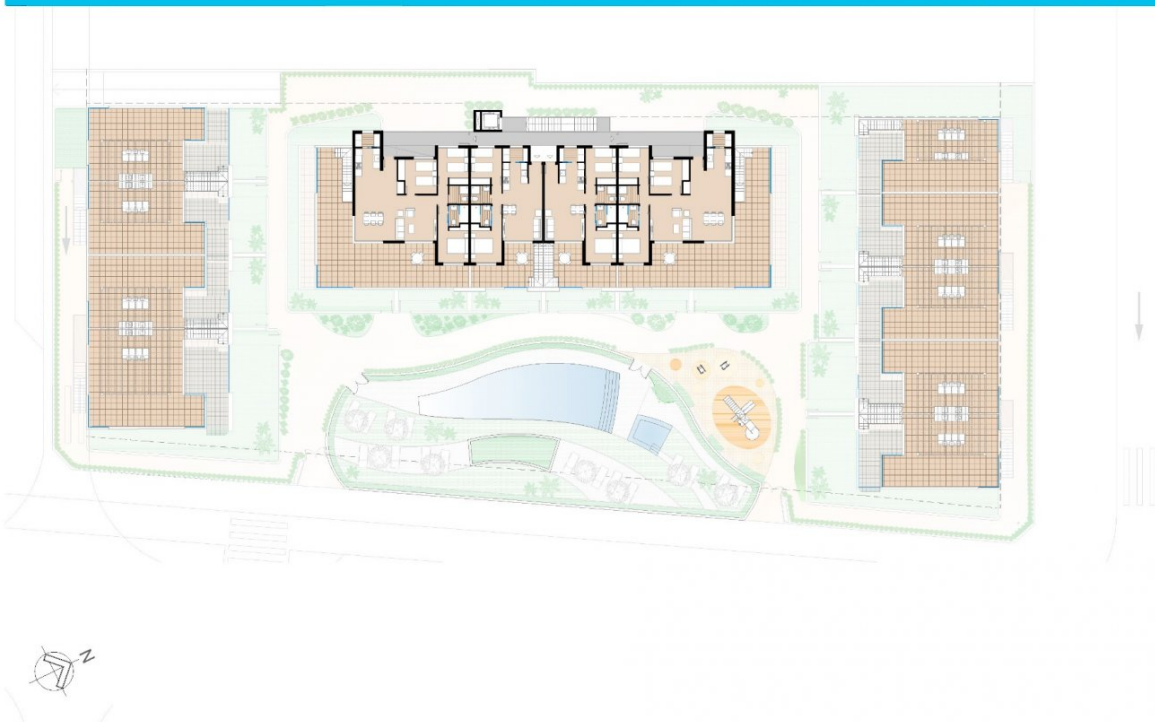
Solarium  
(E:1/200)

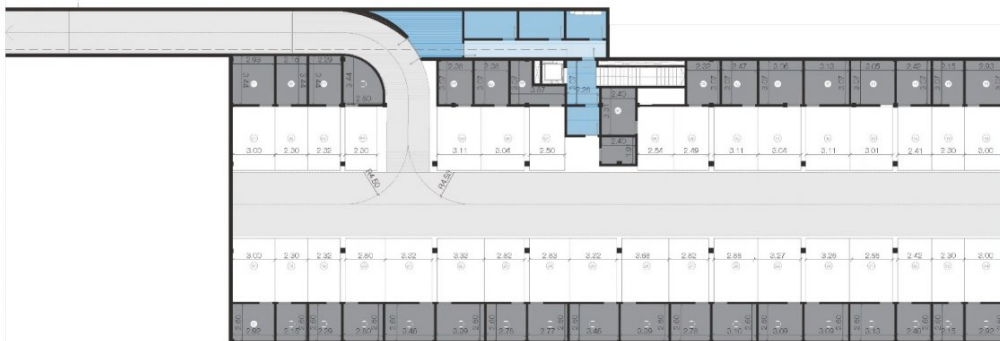
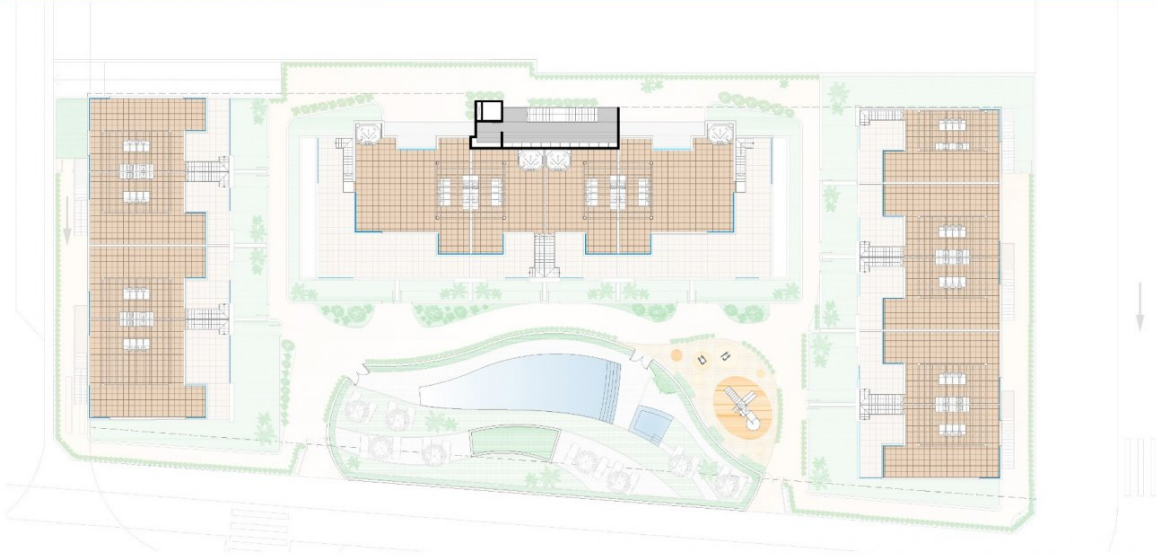


Ground Floor / Planta Baja



Attic Floor / Planta Ático





**"OUR EXPERIENCE IS YOUR GUARANTEE"**