



REF: # 9718

PILAR DE LA HORADADA (PILAR DE LA HORADADA)



#### INFO

PRICE:	259.500 €
PROPERTY TYPE:	Villa (Semi detached)
CITY:	Pilar De La Horadada (Pilar de la Horadada)
BEDROOMS:	2
Bathrooms:	2
Build ( m2 ):	72
Plot ( m2 ):	130
Terrace ( m2 ):	25
Year:	-
Floor:	-
Old price	-



#### DESCRIPTION

NEW BUILD VILLA, SEMI DETACHED, IN PILAR DE LA HORADADA. This 72m2 semi-detached villa consists of 2 bedrooms, 2 bathrooms, an open-plan kitchen / living-dining room with a large window framing the outdoor swimming pool. From the living room, an exclusive staircase leads to the upper floor where there is a beautiful 25m2 solarium. Pilar de la Horadada is a typical Spanish village in the most southern part of the Costa Blanca. The large main street has supermarkets, lots of shops, restaurants and bars and some lovely squares. The beautiful beaches of Torre de la Horadada and Mil Palmeras with fine sand promenade is just 5 minutes away. In addition to the original established Golf courses on the Oriuela Costa Villamartin, Las Ramblas, Real Campoamor and Las Colinas approximately 14km away, Pilar de la Horadada is also well served with the excellent course Lo Romero only 4.2km drive. Only 8.2km away between San Javier and San Pedro del Pinatar, is Dos Mares shopping centre, and the major shopping centres of Murcia and Cartagena are also both under an hour's drive away. Further towards the

Orihuela Costa, only a 15 minute journey you will find “La Zenia Boulevard” the largest shopping centre in the Alicante region. The Airports of Corvera (Murcia) and Alicante are respectively 40 and 55 minutes away.



**STYLE**

- Modern

**VIEWS**

- Panoramic views

**DISTANCE TO :**

Beach : 4 Km

Airport: 40 Km

**PARKING**

Parking no Cars: 1

**KITCHEN**

- Open kitchen

**GARDEN AND  
TERRACES**

- Open terrace

**EXTRA**

- Reinforced door



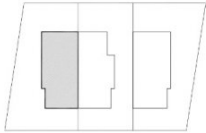




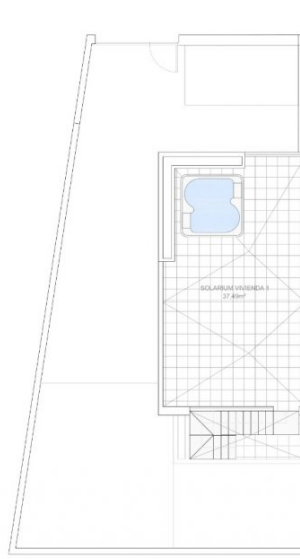








SUPERFICIES CONSTRUIDAS	
SUPERFICIES CONSTRUIDAS VIVIENDA 1	
Superficie construida PB	25.10m <sup>2</sup>
Superficie construida P1	4.10m <sup>2</sup>
Superficie construida TOTAL	29.20m <sup>2</sup>
SUPERFICIES UTILES	
SUPERFICIES UTILES VIVIENDA 1	
PLANTA BAJA	
Salón-comedor-cocina	25.10m <sup>2</sup>
Baño 1	3.10m <sup>2</sup>
Dormitorio 1	10.80m <sup>2</sup>
Acceso	2.10m <sup>2</sup>
Superficie útil PB TOTAL	41.10m <sup>2</sup>
PLANTA PRIMERA	
Dormitorio principal	14.20m <sup>2</sup>
Dormitorio 2	8.80m <sup>2</sup>
Baño 2	4.10m <sup>2</sup>
Escalador	4.00m <sup>2</sup>
Superficie útil P1 TOTAL	31.10m <sup>2</sup>
SUPERFICIE ÚTIL TOTAL DE VIVIENDA	TOTAL 72.20m <sup>2</sup>
SUPERFICIES ÚTIL SOLARIUMS	
SOLARIUM VIVIENDA 1	37.40m <sup>2</sup>











***"OUR EXPERIENCE IS YOUR GUARANTEE"***