



REF: # 9676

PINOSO



INFO

PRICE:	352.000 €
PROPERTY TYPE:	Villa
CITY:	Pinoso
BEDROOMS:	3
Bathrooms:	2
Build (m2):	171
Plot (m2):	10.000
Terrace (m2):	-
Year:	-
Floor:	-
Old price	-



DESCRIPTION

NEW BUILD LUXURY DESIGNED VILLA IN PINOSO, ALICANTE, built on a large plot. This 171m2 luxury villa consists of 3 bedrooms, 2 bathrooms, an open plan kitchen with dining-lounge area, a private pool, covered terrace on a large plot of 10000m2. The villa has been designed with large windows to allow for light, open-plan rooms for the innovative additional space, has an excellent build-quality and contemporary fittings. The impressive location and exemplary infrastructure with unspoiled, panoramic view of the mountains and valleys filled with Almond, Olive trees and vineyards producing the local wine make this area a modern oasis of well-being, and nature surrounding is in abundance. You have a choice of style of kitchen, including the tiles, the bathroom and floors, this way we can make it and personalise the design internally just for you. The Construction Company Architect will work with you and advise where necessary on all the changes that you wish to make. You can even increase the size of the villa if required; we can give you an estimate. Here you can live with freedom and have all the day to day amenities just 10 minutes drive way, you can smell the aroma of the wild

herbs and relax in your own oasis of a Mediterranean Garden.. The villa is being constructed in LAS COLINAS located in a Natural Park with fabulous amazing views to the Mountains and Almond Orchards, yet walking distance to the local Hamlet and only 6 minutes drive to Pinoso close to the village of Ubeda located on the southern Costa Blanca. Alicante Airport is 40 minutes drive away, the beach 1 hour and the nearest golf course 35 minutes.



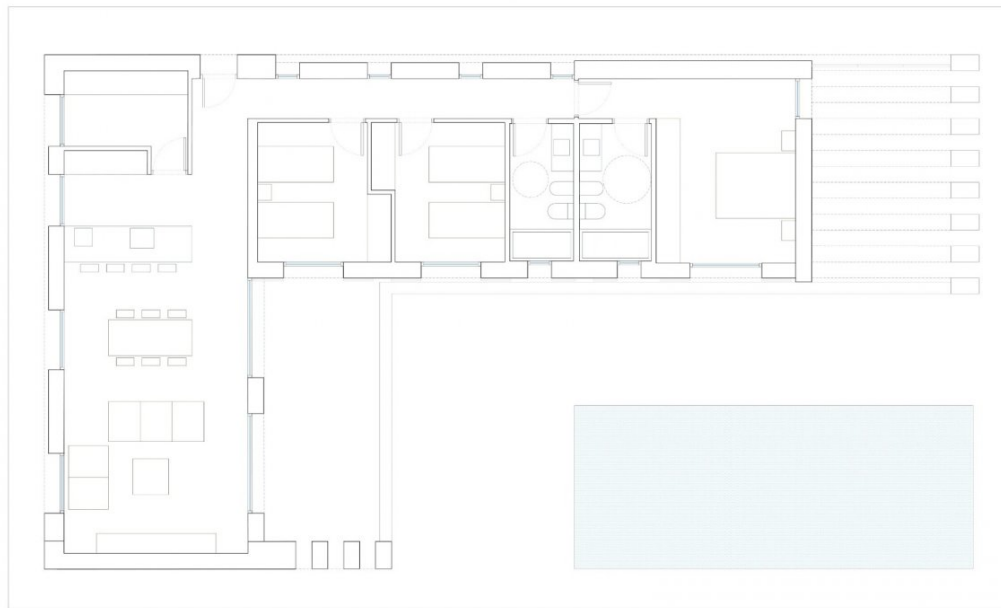
STYLE	VIEWS	DISTANCE TO :	FLOORING
<ul style="list-style-type: none">• Modern	<ul style="list-style-type: none">• Panoramic views	Beach : +10 Km Airport: 60 Km	<ul style="list-style-type: none">• Tile floors
KITCHEN	GARDEN AND TERRACES	EXTRA	
<ul style="list-style-type: none">• Open kitchen	<ul style="list-style-type: none">• Covered terrace• Private garden	<ul style="list-style-type: none">• Reinforced door	

PROPERTY GALLERY









SUPERFICIES
SUPERFICIE CONSTRUIDA: 171,98 m²
SUPERFICIE UTIL. TOTAL: 153,80 m²

SUPERFICIES ÚTILES:
RECIBIDOR: 3,34 m²
PORCHE PRINCIPAL: 20,70 m²
SALÓN COMEDOR COCINA: 45,05 m²
GALERÍA: 6,46 m²
PASILLO: 8,20 m²
DORMITORIO 1: 10,65 m²
DORMITORIO 2: 10,65 m²
BAÑO 1: 5,52 m²
BAÑO DORM. PRINCIPAL: 6,21 m²
DORMITORIO PRINCIPAL: 18,14 m²
PORCHE DORM. PRINCIPAL: 18,88 m²







"OUR EXPERIENCE IS YOUR GUARANTEE"