



REF: # 9632

ORIHUELA COSTA (LA ZENIA)



INFO

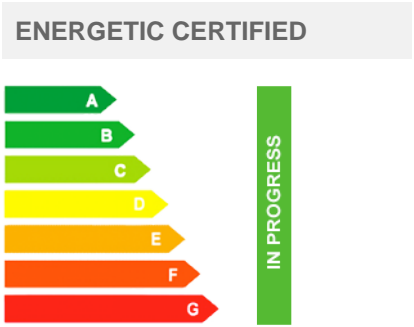
PRICE:	1.700.000 €
PROPERTY TYPE:	Villa
CITY:	Orihuela Costa (La Zenia)
BEDROOMS:	4
Bathrooms:	6
Build (m2):	333
Plot (m2):	619
Terrace (m2):	77
Year:	-
Floor:	-
Old price	-



DESCRIPTION

MAGNIFICENT LUXURY NEW BUILD VILLA IN LA ZENIA, ORIHUELA COSTA second line from the beach. This 333 m2 villa is on a plot of 619m2 and is located 1 minute walk (79m) from "La Zenia" beach – the second line from the beach. The villa consists of 4 bedrooms, 6 bathrooms, open plan living room with the kitchen, 2 terraces and a solarium both of which have beautiful sea views. There is a lovely private pool, parking on the plot and a basement. This stretch of the coast is known as the Orihuela Costa it is a small but busy beach tourist resort. It has many restaurants, bars, shops and good facilities due to the large number of people who live here all the year round. Nearby is the "La Zenia" shopping centre, the largest in the province of Alicante. For golf lovers you have Villamartin which is very close by and built around one of the most prestigious golf courses on the Costa Blanca "Villamartín Golf Club" it is home to a cosmopolitan and International lifestyle with one of the healthiest climates in the world. Just a short distance away you can find three other golf courses such as Las Ramblas, Campoamor and Las Colinas. Nearest Airports are Alicante only a 40 minutes drive and 1 hour

to Murcia (Corvera).



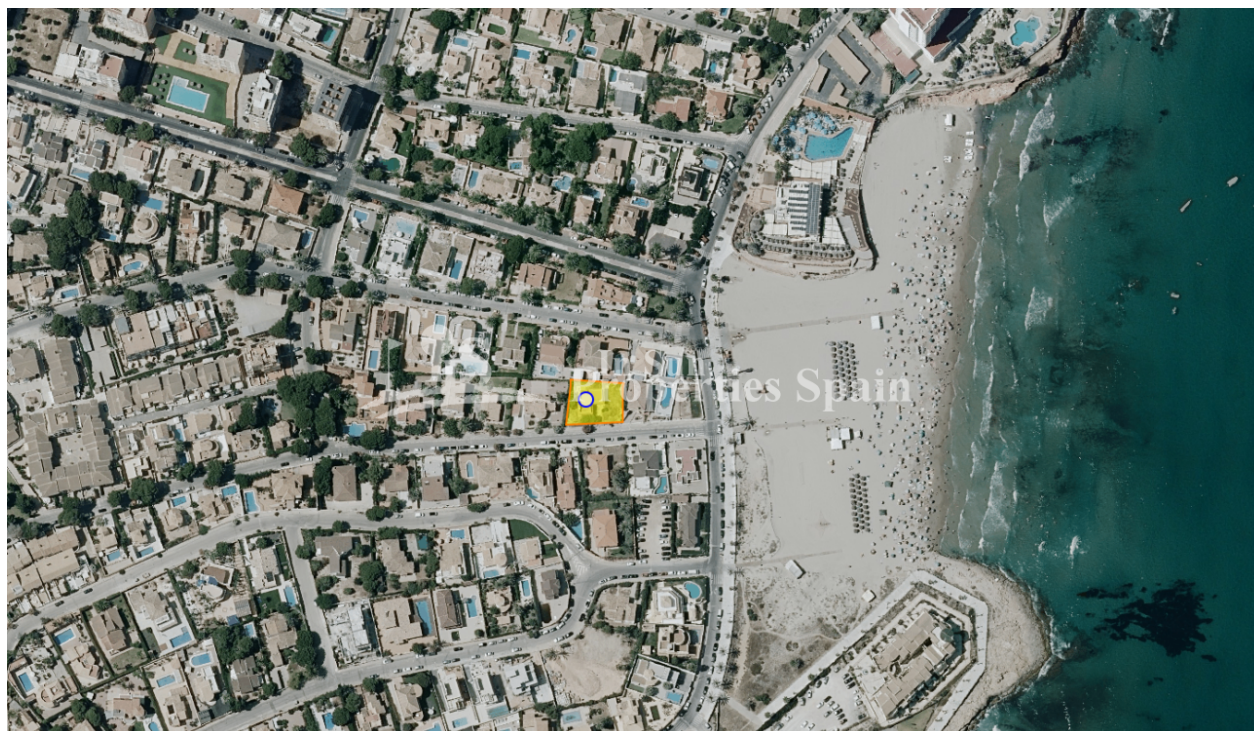
STYLE <ul style="list-style-type: none">• Modern• Contemporary	VIEWS <ul style="list-style-type: none">• Panoramic views• Sea views	AIRCONDITIONING <ul style="list-style-type: none">• Central airconditioning	DISTANCE TO : <div>Beach : 100 m</div> <div>Airport: 70 Km</div>
ORIENTATION <div>South west</div>	FURNITURE <ul style="list-style-type: none">• Not furnished	PARKING <div>Parking no Cars: 1</div>	MAIN LIVING AREA <ul style="list-style-type: none">• Storage• Bathroom en-suite
FLOORING <ul style="list-style-type: none">• Tile floors	KITCHEN <ul style="list-style-type: none">• Open kitchen• Equipped kitchen• Granite countertop	GARDEN AND TERRACES <ul style="list-style-type: none">• Covered terrace• Open terrace• Fruit trees• Landscaped• Fenced• Electric gate• Private garden	HEATING <ul style="list-style-type: none">• Central electric heating
EXTRA <ul style="list-style-type: none">• Built in wardrobes• Reinforced door• Double glazed windows• Storage room			











PLANOS DE PLANTAS/FLOORPLANS



PLANTA SÓTANO
96 m²

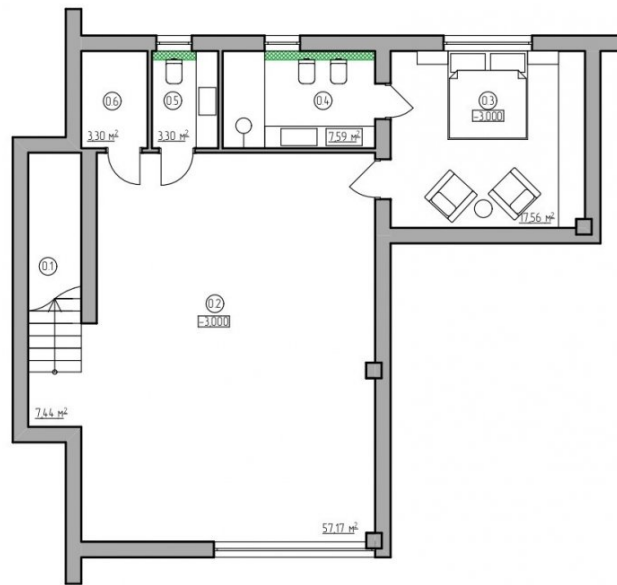


PLANTA BAJA
143 m²

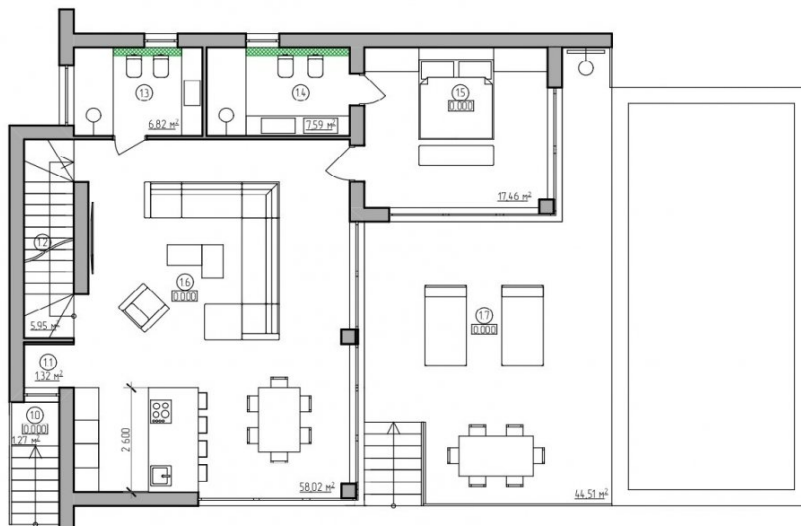


PLANTA PRIMERA
111 m²

PLANTA SÓTANO 96 m²



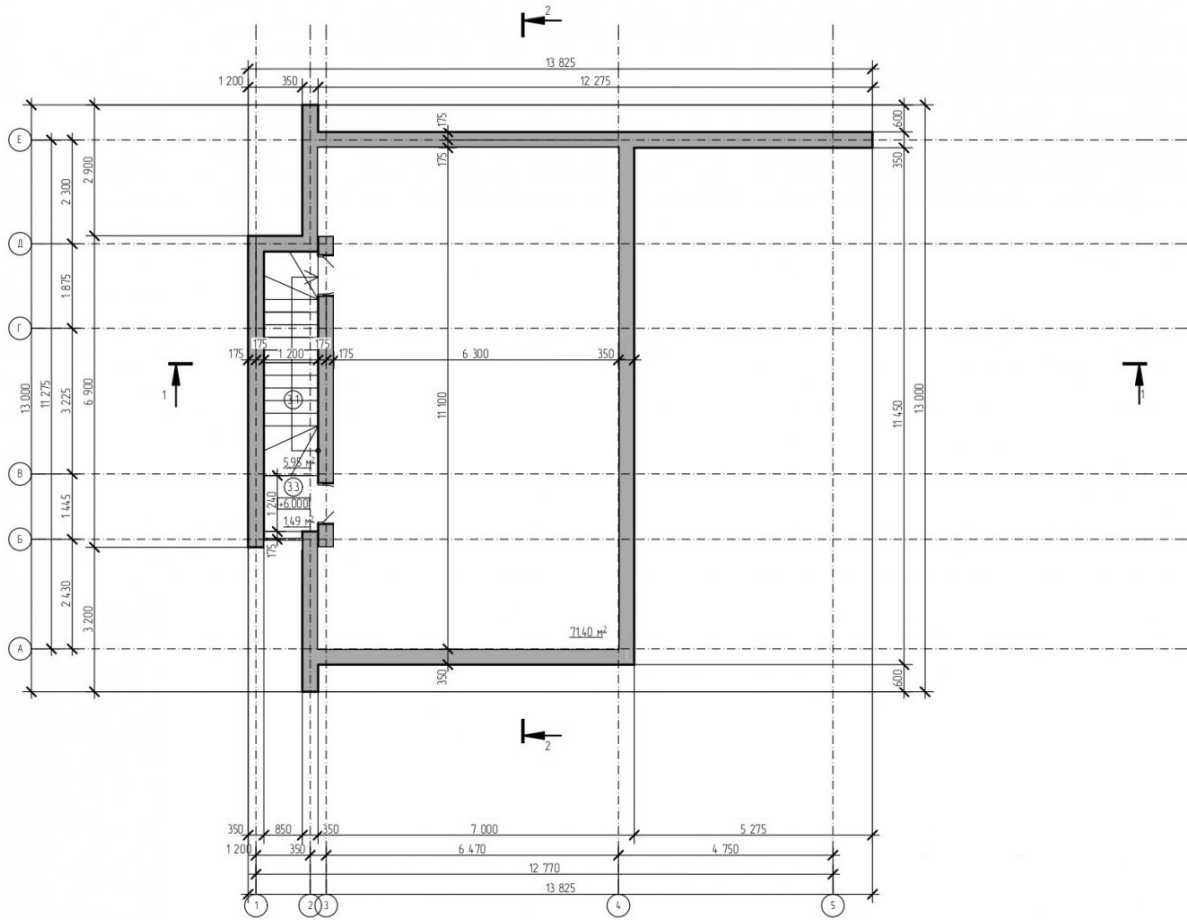
PLANTA BAJA 143 m²



PLANTA PRIMERA
111 m²



PLANTA SOLÁRIUM
79 m²







"OUR EXPERIENCE IS YOUR GUARANTEE"