



REF: # 9605

SAN MIGUEL DE SALINAS (VISTABELLA GOLF)



INFO

PRICE:	220.000 €
PROPERTY TYPE:	Apartment
CITY:	San Miguel de Salinas (Vistabella Golf)
BEDROOMS:	2
Bathrooms:	2
Build (m2):	82
Plot (m2):	-
Terrace (m2):	95
Year:	-
Floor:	-
Old price	-



DESCRIPTION

NEW BUILD RESIDENTIAL OF APARTMENTS TOP FLOOR IN VISTABELLA near the golf course. This lovely spacious 82m2 top floor apartment consists of 2 bedrooms with fitted wardrobes, 2 bathrooms, an open plan kitchen with lounge area, a private 24m2 terrace and 71m2 solarium, all of which are being built with top quality products and materials. The communal areas are beautifully designed and have a lovely communal swimming pool and off road parking. At Vistabella Golf the course is designed so that each player can enjoy it from start to finish. Its undulating streets, strategic bunkers or lakes are some of the features that make it one of the most attractive designs in the area, where every stroke is a challenge and a pleasure for the senses. The 18 Holes of Vistabella Golf, par 72 and more than 6,000 meters in length have been designed following the guidelines of the modern fields with 4 tees of great amplitude in each hole, wide fairways and raised bunkers. The Vistabella Golf club house, restaurant, local bars and shops are

within 5 minutes walk. The busy towns of San Miguel de Salinas and Los Montesinos are 5 minutes drive away and the lovely Blue flag beaches at Guardamar are just 15 minutes drive away. Only 15 minutes drive is “La Zenia Boulevard” the largest shopping centre in the Alicante region, it’s a one-stop destination for clothes, shoes and general supplies. No matter what you're after, chances are you won't walk out empty-handed. Alicante airport is 35 minutes away and Corvera Murcia airport is 45 minutes away.



STYLE	VIEWS	DISTANCE TO :	PARKING
<ul style="list-style-type: none">Modern	<ul style="list-style-type: none">Panoramic views	Beach : +10 Km Airport: 60 Km	Parking no Cars: 1
KITCHEN	GARDEN AND TERRACES	EXTRA	
<ul style="list-style-type: none">Open kitchenEquipped kitchen	<ul style="list-style-type: none">Open terraceCommunal Garden	<ul style="list-style-type: none">Built in wardrobesReinforced door	





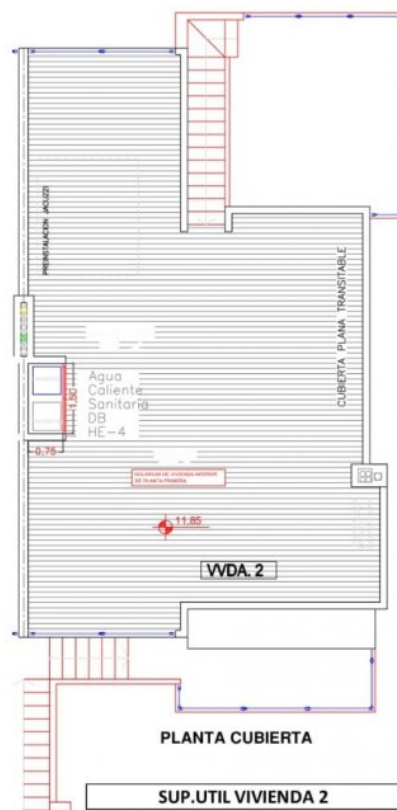




VIVIENDA N°2 PL.1 Y SOLARIUM



PLANTA PRIMERA.

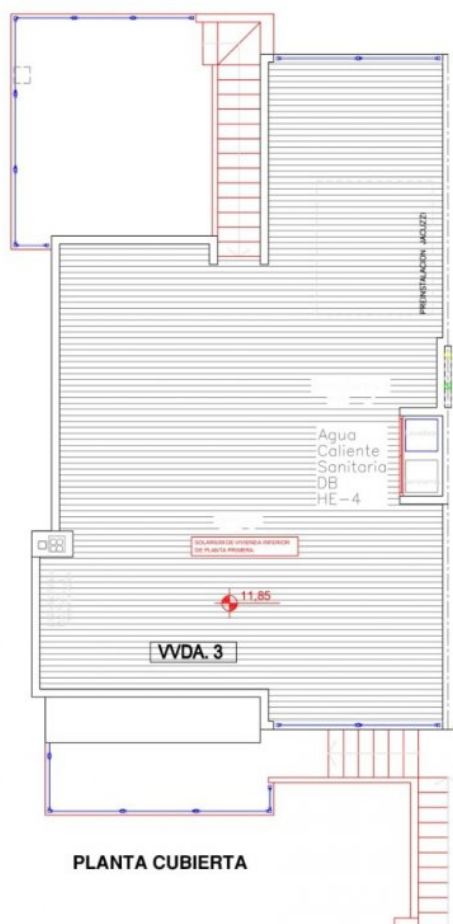


PLANTA CUBIERTA

SUP.UTIL VIVIENDA 2	
DEPENDENCIA	M2
ESCALERA-1 ACCESO(50%)	4,40
TERRAZA-1	8,40
SALON COMEDOR COCINA	31,20
TERRAZA-2	16,35
PASO	2,00
DORMITORIO-1	14,90
DORMITORIO-2	11,70
BAÑO-1	3,95
BAÑO-2	3,95
ESCALERA A CUBIERTA	3,80
AEROTERMIA EN CUBIERTA	1,10
TOTAL	101,75
* TERRAZAS COMPUTADOS AL 100%	
OTRAS SUP,ANEXAS A VVDA-3	
SOLARIUM EN PL.CUBIERTA	71,20

VIVIENDA N°3

PL.1 Y SOLARIUM



SUP.UTIL VIVIENDA 3	
DEPENDENCIA	M2
ESCALERA-1 ACCESO(50%)	4,40
TERRAZA-1	8,40
SALON COMEDOR COCINA	31,20
TERRAZA-2	16,35
PASO	2,00
DORMITORIO-1	14,90
DORMITORIO-2	11,70
BAÑO-1	3,95
BAÑO-2	3,95
ESCALERA A CUBIERTA	3,80
AEROTERMIA EN CUBIERTA	1,10
TOTAL	101,75
* TERRAZAS COMPUTADOS AL 100%	
OTRAS SUP,ANEXAS A VVDA-3	
SOLARIUM EN PL.CUBIERTA	71,20





"OUR EXPERIENCE IS YOUR GUARANTEE"