



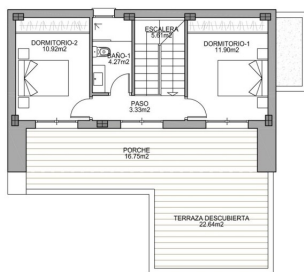
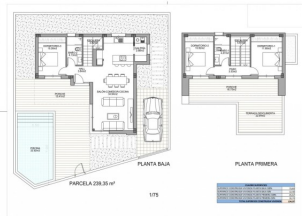
REF: # 9559

BENIJOFAR



INFO

PRICE:	490.000 €
PROPERTY TYPE:	Villa
CITY:	Benijofar
BEDROOMS:	3
Bathrooms:	2
Build (m2):	134
Plot (m2):	240
Terrace (m2):	20
Year:	-
Floor:	-
Old price	-



DESCRIPTION

NEW BUILD MAGNIFICENT VILLA IN BENIJOFAR with garden and private pool. This modern style 134m2 villa consists of a spacious living-dining room with an open-plan kitchen, 3 bedrooms (one of them en-suite), 2 bathrooms, hot and cold air conditioning, video intercom and security door. It has a large 240m2 private plot with terrace, parking area, private pool and a Mediterranean-style garden with great views. Located in the small Spanish town of Benijofar in the province of Alicante on the Southern Costa Blanca. It is just 15 minutes away from the popular town of Torrevieja as well as Guardamar del Segura. There are shopping centers nearby the Habaneras shopping centre in Torrevieja and only 20 minutes drive there is "La Zenia Boulevard" the largest shopping centre in the Alicante region, it's a one-stop destination for clothes, shoes and general supplies. No matter what you're after, chances are you won't walk out empty-handed. The town is quaint and authentic with plazas, parks and a lovely river running through it. It is also close enough to the

beaches only 12km away and tourist destinations for you to enjoy as well, so offering the best of both worlds. For golf lovers the two closest courses are only 8km away, they are La Finca Golf Course in Algorfa and the La Marquesa Golf and Country Club in Ciudad Quesada. Others nearby include Las Colinas Golf and Country Club, Vistabella Golf and Villamartin Golf to name a few. Villamartin Golf Course is now one of the most recognised golf courses on the Costa Blanca. Alicante Airport is 30 mins (50km) drive away and Murcia (Corvera) Airport is 50 minutes (75km).



VIEWS

- Panoramic views

AIRCONDITIONING

- Central airconditioning

DISTANCE TO :

Beach : +10 Km

Airport: 50 Km

PARKING

Parking no Cars: 1

KITCHEN

- Open kitchen

**GARDEN AND
TERRACES**

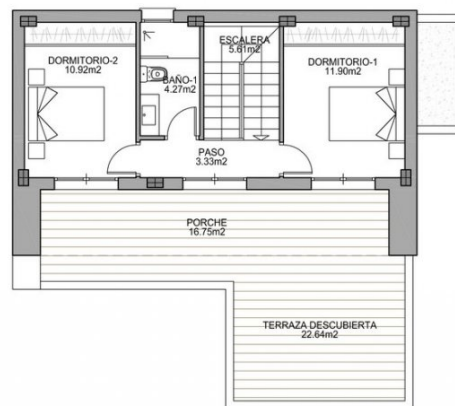
- Open terrace
- Fenced
- Private garden

EXTRA

- Reinforced door
- Video security

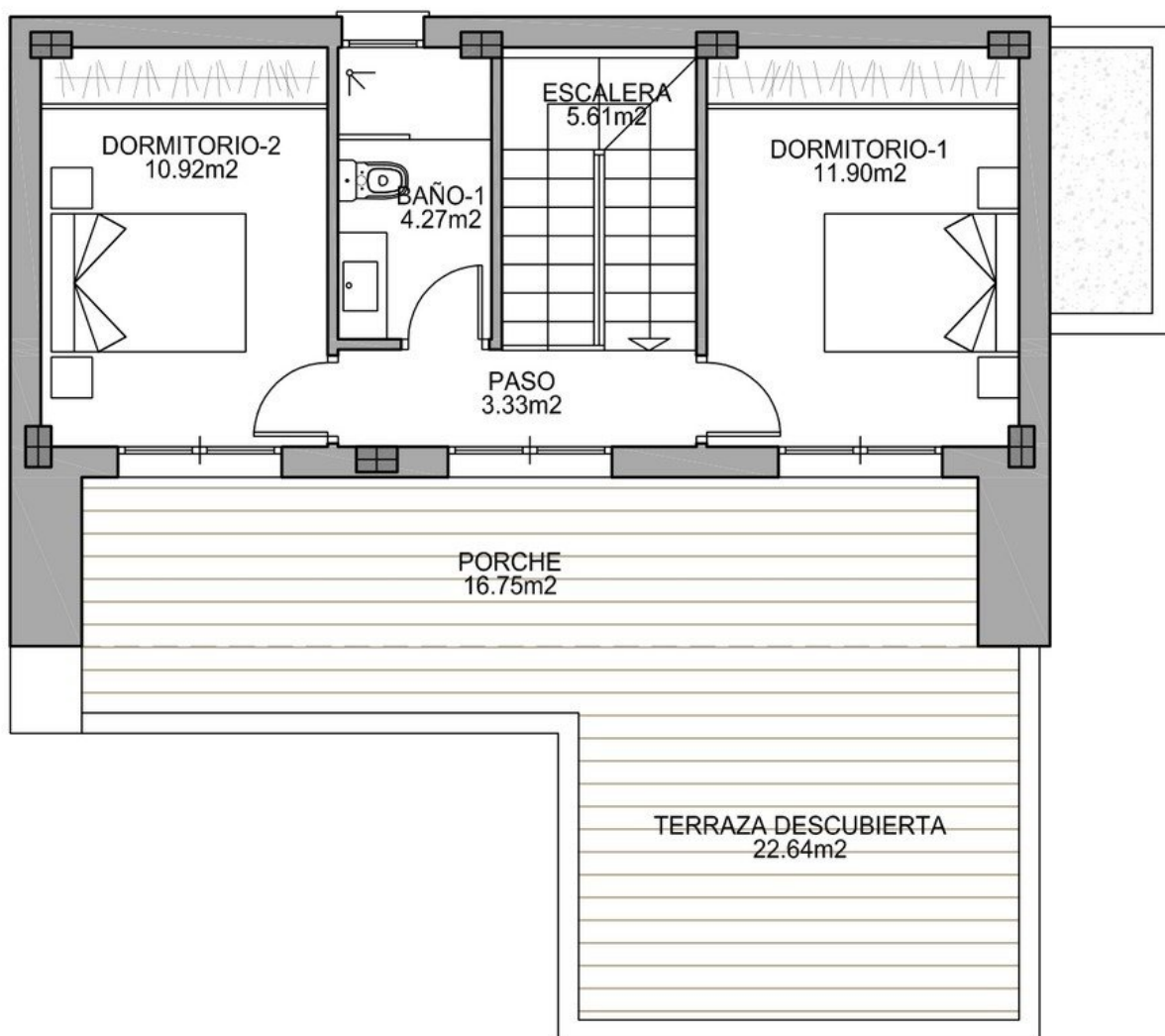


PLANTA BAJA

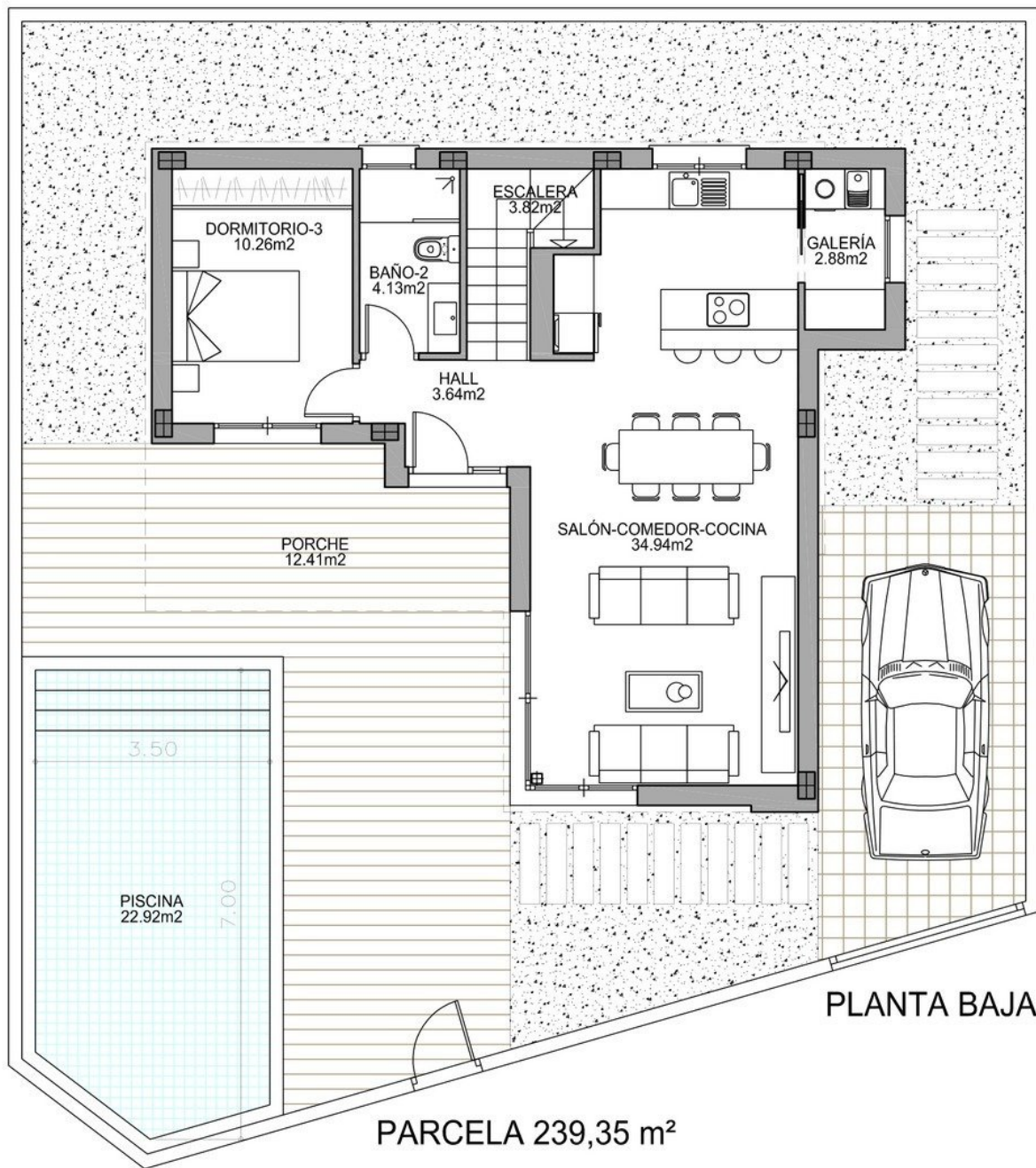


PLANTA PRIMERA

CUADRO SUPERFICIES	
SUPERFICIE CONSTRUIDA VIVIENDA PLANTA BAJA 100%	73.83
SUPERFICIE CONSTRUIDA VIVIENDA PLANTA BAJA 50%	32.40
SUPERFICIE CONSTRUIDA VIVIENDA PLANTA PRIMERA 100%	45.67
SUPERFICIE CONSTRUIDA VIVIENDA PLANTA PRIMERA 50%	16.74
TOTAL SUPERFICIE CONSTRUIDA VIVIENDA	134.07



PLANTA PRIMERA



PLANTA BAJA

PARCELA 239,35 m²









"OUR EXPERIENCE IS YOUR GUARANTEE"