



REF: # 9517

TORREVIEJA



#### INFO

PRICE: 940.000 €

PROPERTY TYPE: Villa

CITY: Torrevieja

BEDROOMS: 4

Bathrooms: 4

Build ( m2 ): 310

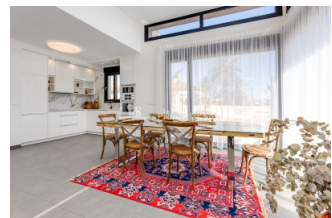
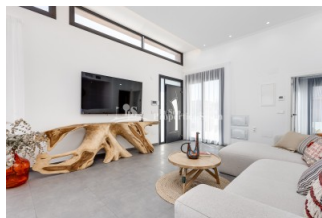
Plot ( m2 ): 320

Terrace ( m2 ): 122

Year: -

Floor: -

Old price -



#### DESCRIPTION

BEAUTIFUL MEDITERRANEAN VILLA, DETACHED, IN TORREVIEJA only 60m to the beach with sea views. This 310m2 villa is built on a plot of 320 m<sup>2</sup> and consists of 4 double bedrooms (2 en suite), 4 bathrooms, 2 living rooms and kitchen, private parking, terraces of 50m<sup>2</sup>, solarium of 50m<sup>2</sup> with sea views and a private swimming pool. Located only 1 minute from the beach with direct sea views, in the best part of the town of Torrevieja - La Mata is an area with a very well developed infrastructure. It is a small fishing village with all the necessary services for day to day life, with 9 km of fine sandy beaches and a climate that offers you 300 days of sunshine a year with an average temperature of 20°C. Near to the town of Torrevieja which is known for its superb promenade, restaurants, weekly Friday market and the Habaneras shopping centre. It has a wide range of cultural and leisure activities all year round. Only 20 minutes drive is "La Zenia Boulevard" the largest shopping centre in the Alicante region, it's a one-stop destination for clothes, shoes and general supplies. No matter what you're after, chances are you won't walk out empty-handed. In addition to the original established Golf courses on the Orihuela Costa Villamartin, Las

Ramblas, Real Campoamor and Las Colinas, Torrevieja area is now also well served with excellent courses such as La Finca, La Marquesa, Las Colinas, Lo Romero and Vistabella offering different golf experiences with a variety of sea and mountain views. La Mata is connected by bus with Torrevieja and Alicante. There are 2 hospitals nearby. Golf courses 6 km. Alicante airport 42 km.



STYLE	VIEWS	DISTANCE TO :	PARKING
<ul style="list-style-type: none"><li>Contemporary</li></ul>	<ul style="list-style-type: none"><li>Panoramic views</li><li>Sea views</li></ul>	Beach : 6 Km Airport: 40 Km	Parking no Cars: 1
GARDEN AND TERRACES			

- Open terrace
- Fruit trees
- Fenced
- Private garden



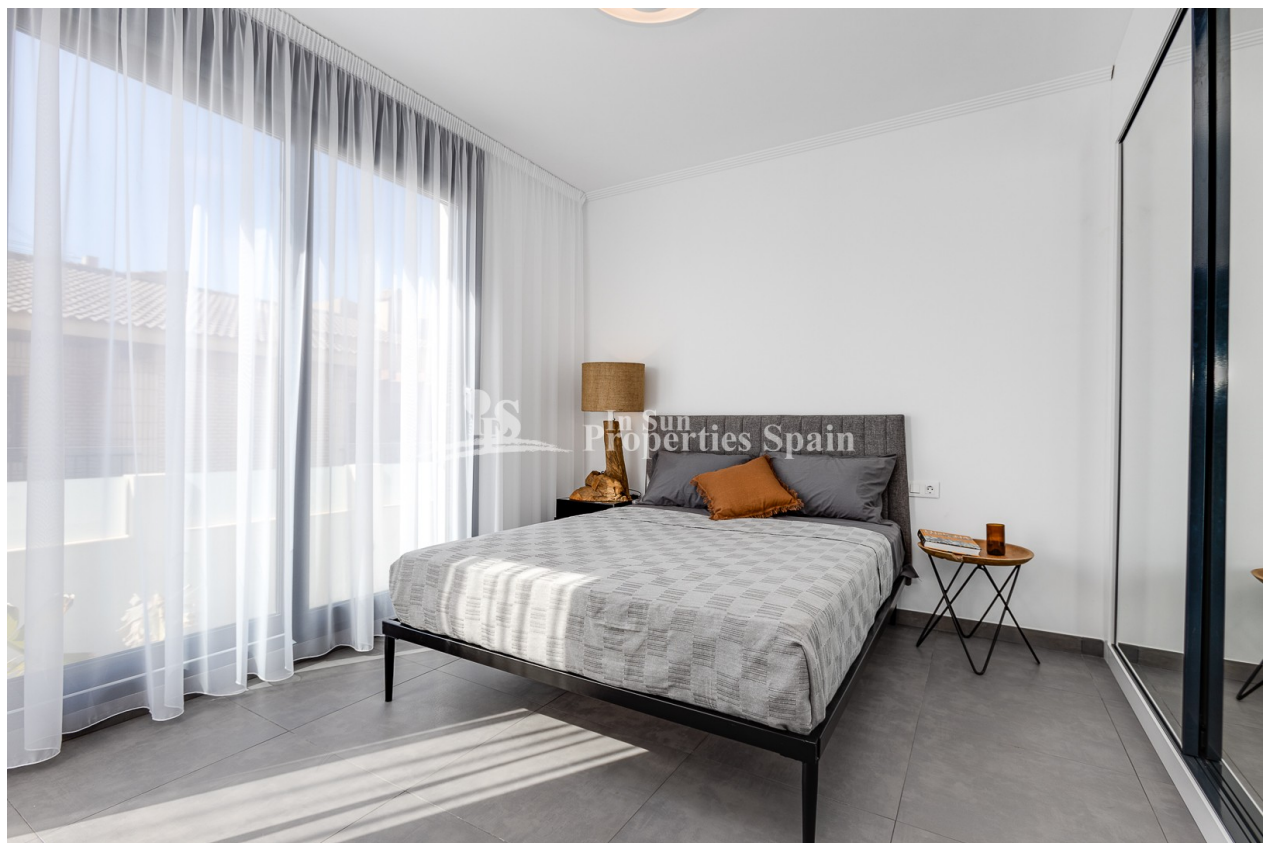


























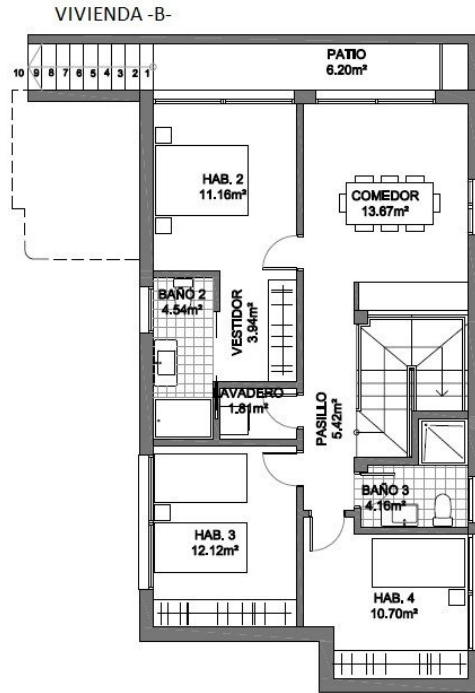
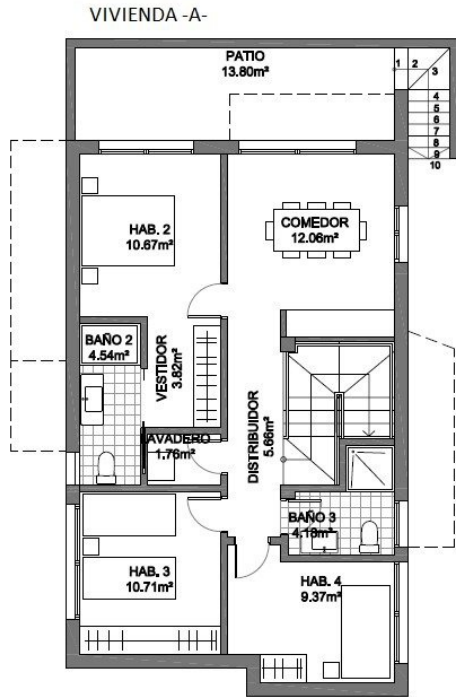




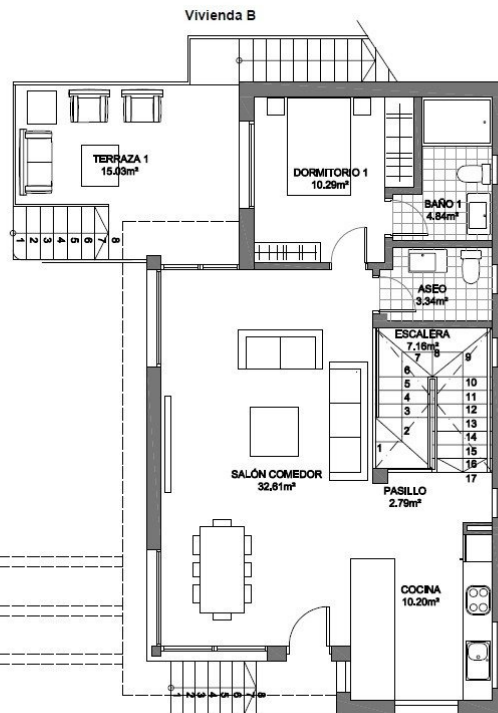
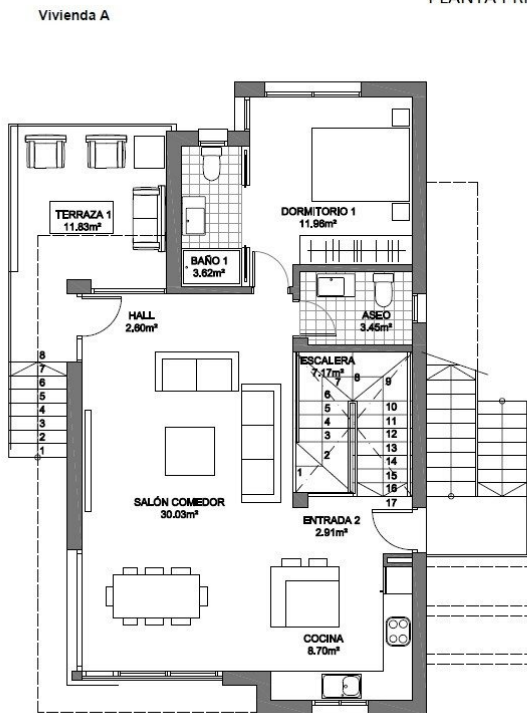




## PLANTA BAJA



## PLANTA PRIMERA



**"OUR EXPERIENCE IS YOUR GUARANTEE"**