



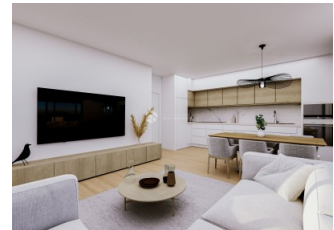
REF: # 8898

CALPE/MORAIRA (CALPE CENTRO)



INFO

PRICE:	245.000 €
PROPERTY TYPE:	Apartment
CITY:	Calpe/Moraira (Calpe centro)
BEDROOMS:	3
Bathrooms:	2
Build (m2):	85
Plot (m2):	-
Terrace (m2):	87
Year:	
Floor:	100
Old price	-



DESCRIPTION

This project meets all your wishes and needs. This is a very special building that is the character, the brand, the soul, the DNA of the project. A tower, slender and different, which grows up like an arrow shot to the sky and looks for the light, always upwards. Only 6.000 euro for do the reservation and 25% of the sales price when sign the contract. 26 apartments full of light and joy. 26 apartments ready to live in, with large terraces. 26 apartments that will give you the Penthouse feeling. The tower is strategically located in Calpe. It is close to the main road, which provides good access to anywhere in the city. The local area can offer all kinds of services, from restaurants, supermarkets, shops to leisure and sports venues. The beach is less than 2 minutes' walk from the apartments. Include in the price is all whitegoods. Complete bathroom fittings. Complete kitchen fittings. Floor heating on all bath rooms. Included in the price is also a ground floor garage and a storeroom. Large common area with swimming pool, children's pool, sun loungers, play area, paddle tennis, gym, etc. Spacious rooms with large windows

that make the apartments light and airy. All the apartment is south facing. Most have views of the Mediterranean Sea. All apartments consist of 3 bedrooms and 2 bathrooms. Terraces from 24m2 to 184m2. Prices from 245,000 euros to 405,000 euros plus taxes. The town of Calpe can offer absolutely everything to satisfy an excellent quality of life, and is surrounded by a seafront promenade with all kinds of shops and restaurants. Near the apartments is the "Peñón de Ifach", (Calpe Rock) a very attractive tourist destination on the Costa Blanca.



STYLE <ul style="list-style-type: none">Modern	AIRCONDITIONING <ul style="list-style-type: none">Central airconditioning	DISTANCE TO : <div>Beach : 200 m</div> <div>Airport: 70 Km</div> <div>Town center : 100 m</div>	ORIENTATION <div>South</div>
PARKING <div>Garage no Cars : 1</div>	MAIN LIVING AREA <ul style="list-style-type: none">Bathroom en-suite	FLOORING <ul style="list-style-type: none">Tile floorsLaminate floors	KITCHEN <ul style="list-style-type: none">Open kitchenEquipped kitchenGranite countertop
GARDEN AND TERRACES <ul style="list-style-type: none">Covered terraceExterior lightsPalm treesPlay GroundLandscapedFencedElectric gatePadle tennisCommunal Garden	EXTRA <ul style="list-style-type: none">Built in wardrobesReinforced doorDouble glazed windowsDoor bell with cameraSatellite TVLiftInternetConcierge		

PROPERTY GALLERY













VIVIENDA 1/ HOUSE TYPE 1

planta 1

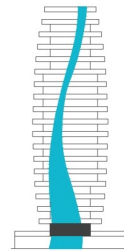
1st floor



1. Acceso	2.72 m ²
2. Estar-comedor-cocina	25.12 m ²
3. Dormitorio 01	12.54 m ²
4. Dormitorio 02	9.10 m ²
5. Dormitorio 03	9.10 m ²
6. Baño 01	4.18 m ²
7. Baño 02	3.90 m ²
8. Paso	3.85 m ²
Total superficie útil interior	70.51 m ²

Terraza privativa	80.85 m ²
Total superficie útil	151.36 m ²

Total const. int.	85.62 m ²
Sup. terraza priv. (100%)	87.22 m ²
Total construida	172.84 m ²











"OUR EXPERIENCE IS YOUR GUARANTEE"