



REF: # 8859

ALBIR



INFO

| | |
|-----------------|-------------|
| PRICE: | 1.390.000 € |
| PROPERTY TYPE: | Villa |
| CITY: | Albir |
| BEDROOMS: | 3 |
| Bathrooms: | 3 |
| Build (m2): | 339 |
| Plot (m2): | 480 |
| Terrace (m2): | - |
| Year: | - |
| Floor: | - |
| Old price | - |



DESCRIPTION

This exclusive modern design villa in Playa de Albir, Alfàs del Pi, Costa Blanca, is a newly built home that combines luxury, comfort and an unbeatable location, just a 15minute walk from the beach, with delivery scheduled for December 2024. The property has a constructed area of 339 m² on a plot of 480 m², with a Mediterranean garden and a heated swimming pool. On the ground floor, an open space that combines a living room, dining room and kitchen with large windows and a double height that fills the entire house with natural light, connecting the interiors with the exteriors through interior patios, as well as including a garage with direct access to the house. On the first floor there are 3 ensuite bedrooms with access to a private terrace and a spectacular solarium with views of Puig Campana, the Sierra Bernia and the Sierra Helada. The semibasement floor offers 90 m² of customizable space for a gym, games room or more bedrooms. Among the outstanding features are

underfloor heating, hotcold air conditioning , home automation system and alarm, as well as top quality finishes. This villa offers a privileged environment with contemporary design and all the necessary amenities for maximum comfort. Contact us for more information or to arrange a viewing and discover your new luxury home!















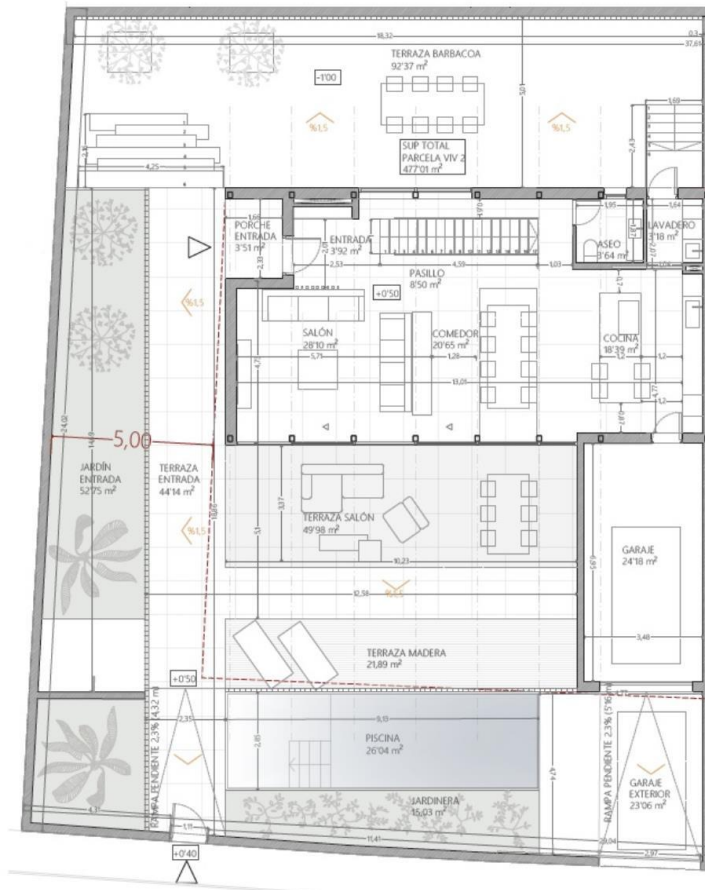




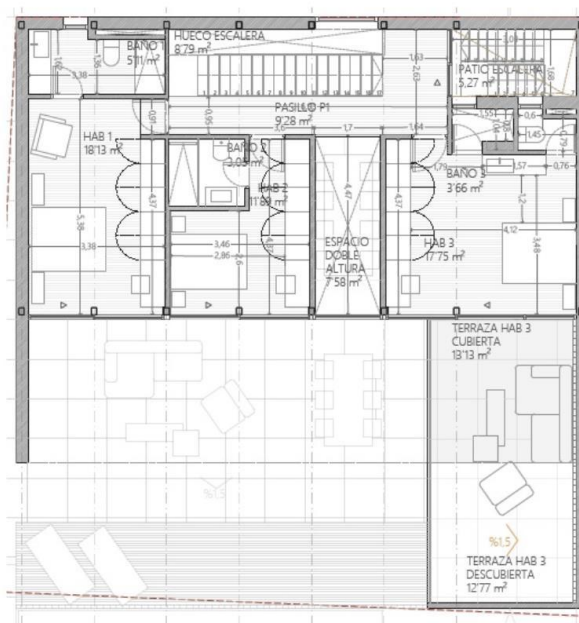








| VIVIENDA 2 | |
|-------------------------|------------------|
| Estancia | Sup Útiles |
| Planta Baja | |
| EXTERIOR | |
| Terraza salón | 49.98 m² |
| Terraza piscina madera | 21.89 m² |
| Garaje exterior | 23.06 m² |
| Terraza BBQ -1 | 92.37 m² |
| Terraza Pisable entrada | 44.14 m² |
| TOTAL ÚTIL: | 231.44 m² |
| INTERIOR | |
| Cocina | 18.39 m² |
| Aseo | 3.64 m² |
| Circulaciones PB | 8.50 m² |
| Comedor | 20.65 m² |
| Salón | 28.10 m² |
| Hall | 3.92 m² |
| Recibidor | 3.51 m² |
| Lavadero | 3.18 m² |
| Garaje | 23.15 m² |
| TOTAL ÚTIL: | 113.03 m² |



| VIVIENDA 2 | |
|--------------------------------|--------------------|
| Estancia | Superficies útiles |
| Planta Primera | |
| EXTERIOR | |
| Terraza garaje cubierta | 13,13 m² |
| Terraza garaje descubierta | 12,79 m² |
| Patio escalera acceso solárium | 5,27 m² |
| TOTAL ÚTIL: | 31,19 m² |
| INTERIOR | |
| Pasillo P1 | 9,28 m² |
| Dormitorio 1 | 18,13 m² |
| Baño 1 | 5,11 m² |
| Dormitorio 2 | 11,89 m² |
| Baño 2 | 3,05 m² |
| Dormitorio 3 | 17,75 m² |
| Baño 3 | 3,66 m² |
| Doble altura escalera | 3,38 m² |
| Doble altura comedor | 7,58 m² |
| TOTAL ÚTIL: | 79,83 m² |

Image not found
<https://www.cmsinmo.com/imagenes/uploads/inmu/4/8859/158859.jpg>

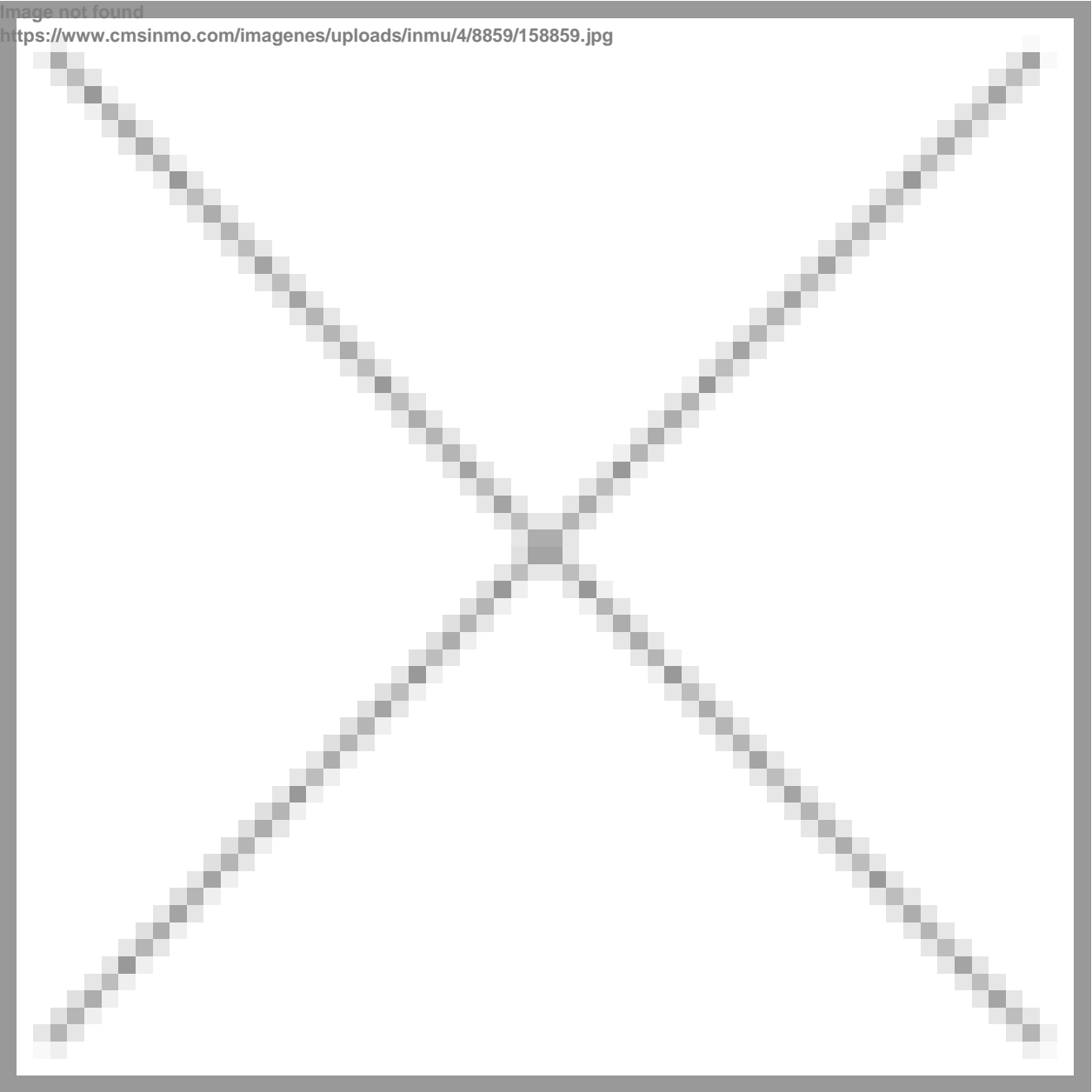


Image not found
<https://www.cmsinmo.com/imagenes/uploads/inmu/4/8859/168859.jpg>

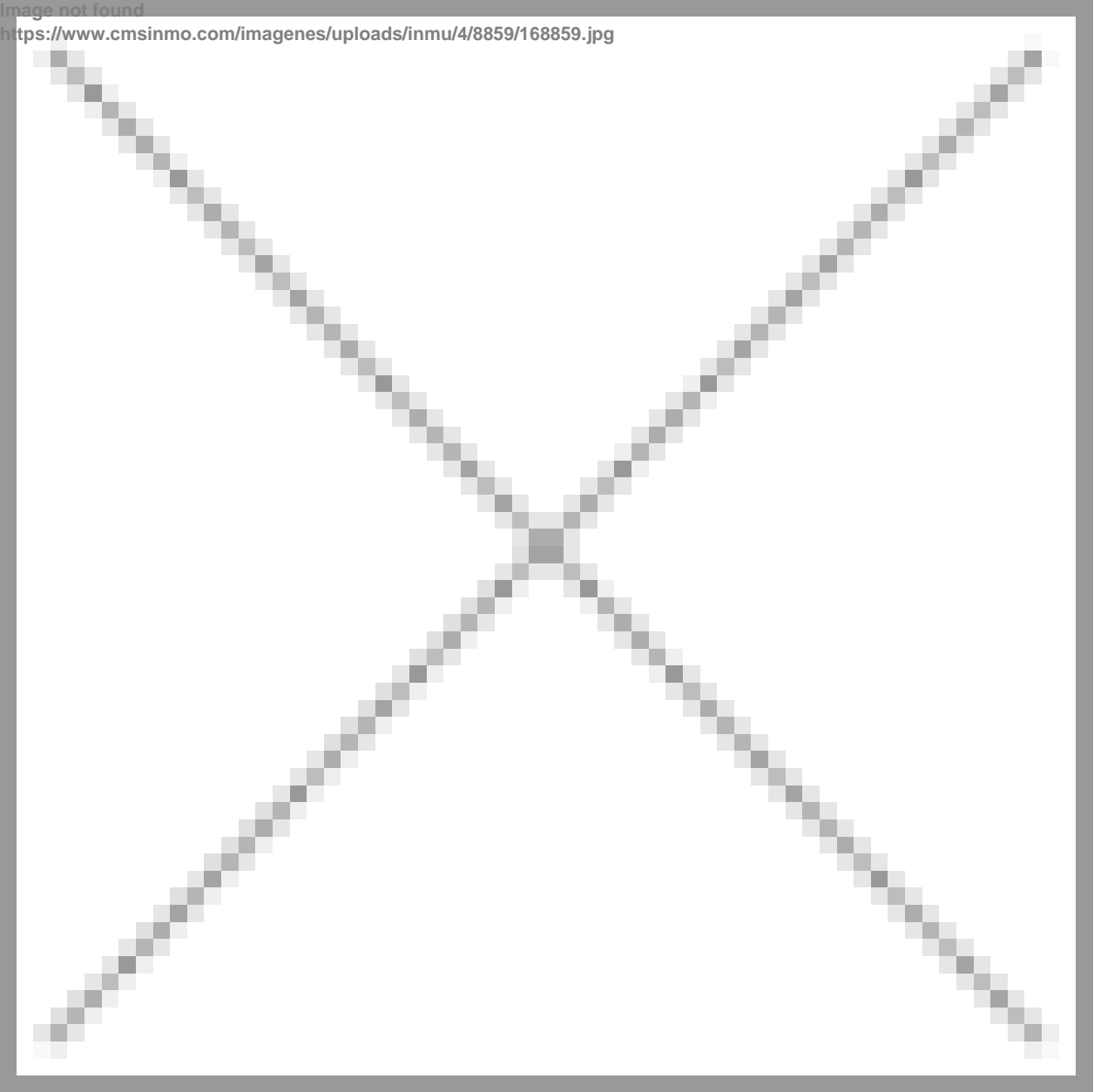


Image not found
<https://www.cmsinmo.com/imagenes/uploads/inmu/4/8859/178859.jpg>

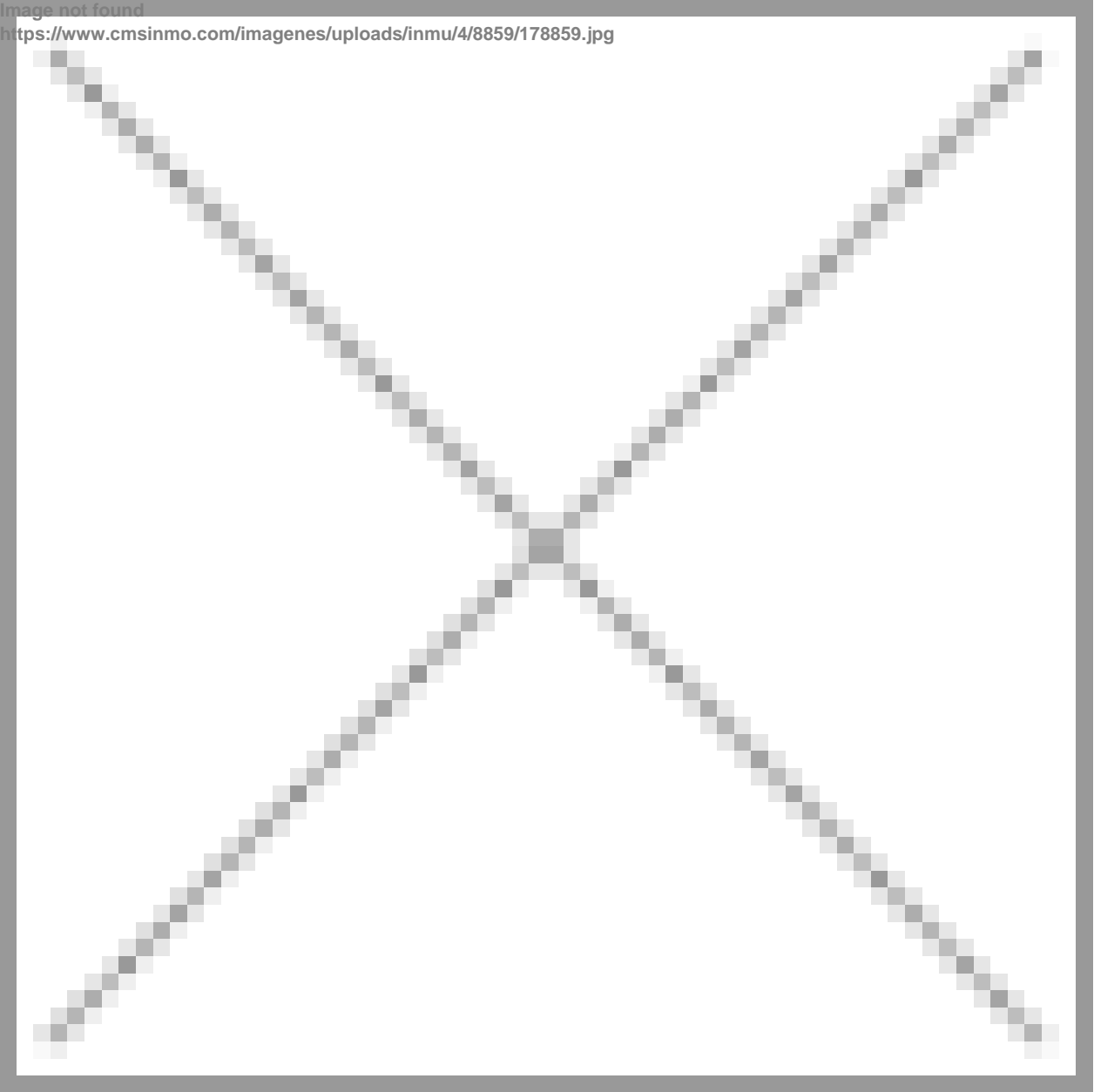
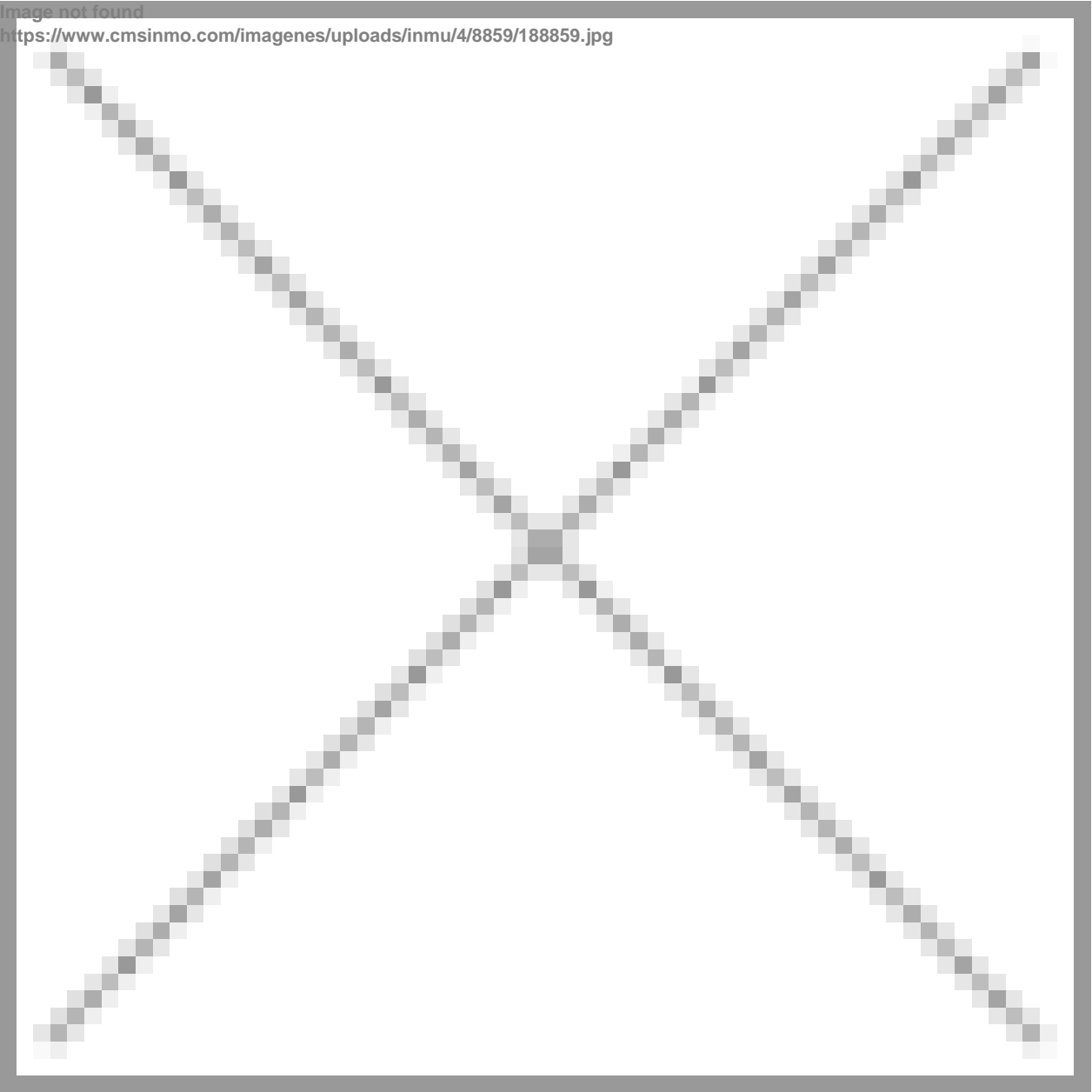


Image not found
<https://www.cmsinmo.com/imagenes/uploads/inmu/4/8859/188859.jpg>





"OUR EXPERIENCE IS YOUR GUARANTEE"