

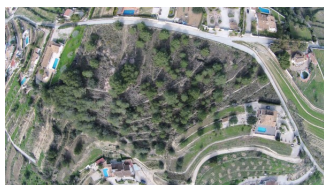


REF: # 7260

CALPE/MORAIRA (BENISSA COSTA)

INFO

PRICE:	1.650.000 €
PROPERTY TYPE:	Villa
CITY:	Calpe/Moraira (Benissa costa)
BEDROOMS:	4
Bathrooms:	4
Build (m2):	417
Plot (m2):	12.048
Terrace (m2):	183 + 29
Year:	2020
Floor:	2
Old price	-



DESCRIPTION

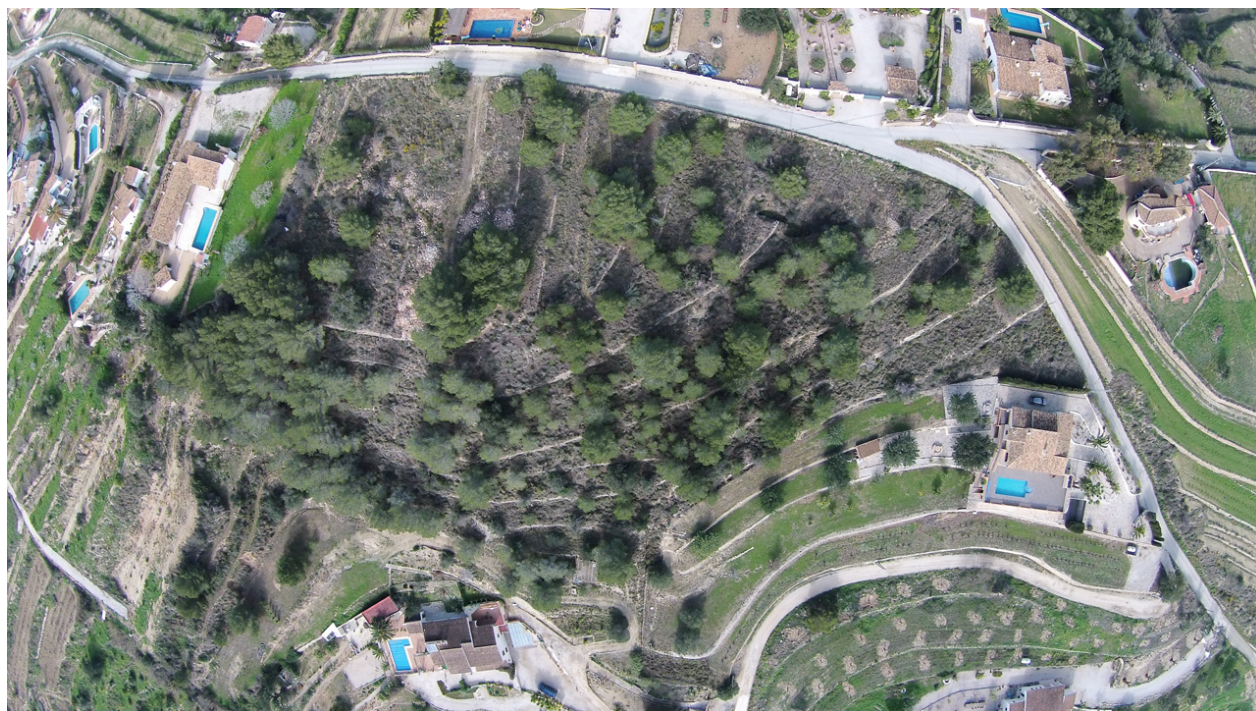
Beautiful family finca / country house to be built (construction starts in March 2019) on a spectacular location offering amazing views over the sea, Calpe, Peñon de Ifach and Bernia mountains, facing south-west. Distribution ground floor: spectacular entrance hall with ample staircase and a powder room, large living room with fire place and direct access to the porch, from the living access to the kitchen / diner with adjacent utility room and on the other side access to the master suite with walk-in closet, bathroom with double sink and double shower, separate bath, with direct access to the pool terrace. Upstairs: large landing with office space and 3 large double bedrooms, all with walk-in closets, own bathroom and beautiful views. Outside there is a 11x4m pool and parking for multiple cars. Incl. underfloor heating, air-conditioning, double glazing, fully equipped kitchen and luxurious bathrooms etc.

ENERGETIC CERTIFIED



STYLE <ul style="list-style-type: none">Contemporary	VIEWS <ul style="list-style-type: none">Panoramic viewsSea viewsMountain views	AIRCONDITIONING <ul style="list-style-type: none">Central airconditioning	ORIENTATION <div>South</div>
PARKING <div>Garage no Cars : 1</div> <div>Parking no Cars: +10</div>	MAIN LIVING AREA <ul style="list-style-type: none">Bathroom en-suite	FLOORING <ul style="list-style-type: none">Tile floorsLaminate floors	KITCHEN <ul style="list-style-type: none">Open kitchenEquipped kitchenGranite countertop
GARDEN AND TERRACES <ul style="list-style-type: none">Covered terraceOpen terraceExterior lightsAutomatic watering systemFruit treesPalm treesPlay GroundLandscapedFencedStone wallsElectric gateOutdoor kitchenPrivate garden	HEATING <ul style="list-style-type: none">Central gas heatingFloor heatingFloor heating bathroomsFireplace wood	EXTRA <ul style="list-style-type: none">Built in wardrobesReinforced doorDouble glazed windowsDoor bell with cameraSatellite TVStorage roomLaundry roomInternet	





















PROMOTOR:
SITUACIÓN: Pádo Molades
POBLACIÓN: Benissa (Alicante)
EXP. A-48-16
Escala: 1: 100
Mayo-16

Sup. Construidas

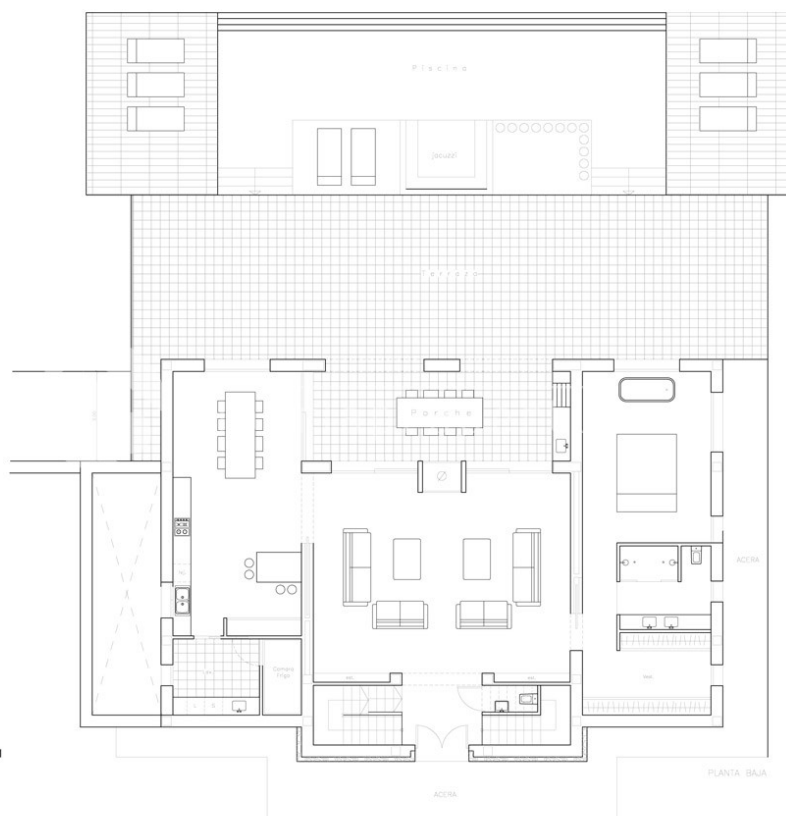
Planta Sotano 240,00 m²

Planta Baja

Vivienda 211,40 m²
Porché 29,24 m²
Terraza 183,23 m²
Piscina 73,50 m²

Planta Alta

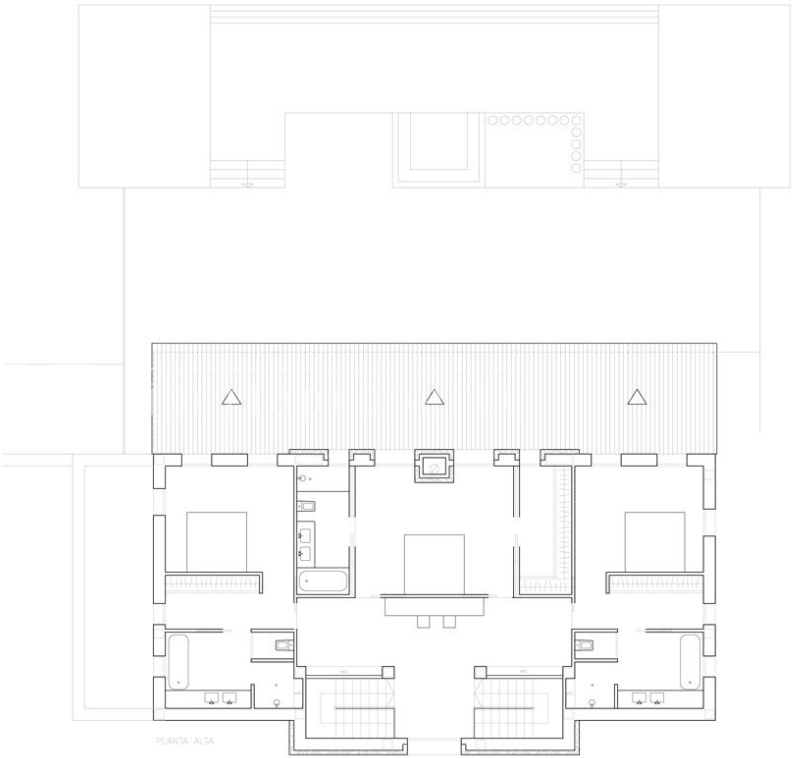
Vivienda 176,72 m²



ANTEPROYECTO DE REFORMA Y AMPLIACIÓN
DE VIVIENDA UNIFAMILIAR AISLADA

PROMOTOR:
SITUACIÓN: Pádo Molinos
POBLACIÓN: Benissa (Alicante)
EXP. A-68-16
Escala: 1: 100
Mayo-16

Sup. Construidos	
Planta Sotano	240.00 m ²
Planta Baja	
Vivienda	211.40 m ²
Porche	29.24 m ²
Terraza	183.23 m ²
Placina	73.50 m ²
Planta Alta	
Vivienda	176.72 m ²



ANTEPROYECTO DE REFORMA Y AMPLIACIÓN
DE VIVIENDA UNIFAMILIAR AISLADA

"OUR EXPERIENCE IS YOUR GUARANTEE"