



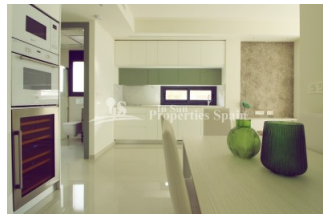
REF: # 7122

ORIHUELA COSTA (TORRE DE LA HORADADA)



INFO

PRICE:	184.000 €
PROPERTY TYPE:	Apartment
CITY:	Orihuela Costa (Torre de la Horadada)
BEDROOMS:	2
Bathrooms:	2
Build (m2):	91
Plot (m2):	-
Terrace (m2):	19
Year:	2019
Floor:	1
Old price	-



DESCRIPTION

Los Alamos is a small residential apartment development located in TORRE DE LA HORADADA less than 100m from the beach! A total of 5 luxury apartments with 2 and 3 bedrooms designed with the best qualities of the market, large interior spaces and surrounded by all the services and leisure available. Therefore, Los Alamos becomes the best area to spend your long holidays or live all year round. At the moment there are 2 key ready properties; a 3 bed, 3 bath PENTHOUSE with a total of 271.94m2 with sea views for 357,000€ and a 2 bed, 2 bath FIRST FLOOR of 91.03m2 for 184,000€. Both houses include in their price: white goods (oven, microwave, fridge, ceramic hob, dishwasher and washing machine) air conditioning, indoor and outdoor lights and full bathrooms. Torre de la Horadada is a Spanish town located on the Mediterranean Sea. The local beaches are well known for their fine sand and crystal waters. Its popularity during the busy summer months means that the town's population can quadruple in size. In recent years Torre de la Horadada has become the home to many expatriate residents from

northern Europe, mainly from the UK and Ireland. This has led to the all year round sustainability of the town. Although it's a small coastal town Torre boasts various local services such as a medical center, supermarkets and two main plazas, "Pueblo Latino" and "The Square" home to a great variety of bars, restaurants and ice cream parlors. 30 minutes from RMU Corvera Airport and 50 minutes from ALC Alicante International Airport



STYLE <ul style="list-style-type: none">• Modern• Contemporary	VIEWS <ul style="list-style-type: none">• Panoramic views• Sea views	AIRCONDITIONING <ul style="list-style-type: none">• Central airconditioning	DISTANCE TO : <div>Beach : 100 m</div> <div>Airport: 40 Km</div> <div>Town center : 200 m</div>
ORIENTATION <div>South East West</div>	FURNITURE <ul style="list-style-type: none">• Not furnished	MAIN LIVING AREA <ul style="list-style-type: none">• Bathroom en-suite	FLOORING <ul style="list-style-type: none">• Tile floors• Stone floors
KITCHEN <ul style="list-style-type: none">• Open kitchen• Equipped kitchen	GARDEN AND TERRACES <ul style="list-style-type: none">• Open terrace• Stone walls	EXTRA <ul style="list-style-type: none">• Built in wardrobes• Reinforced door• Double glazed windows	



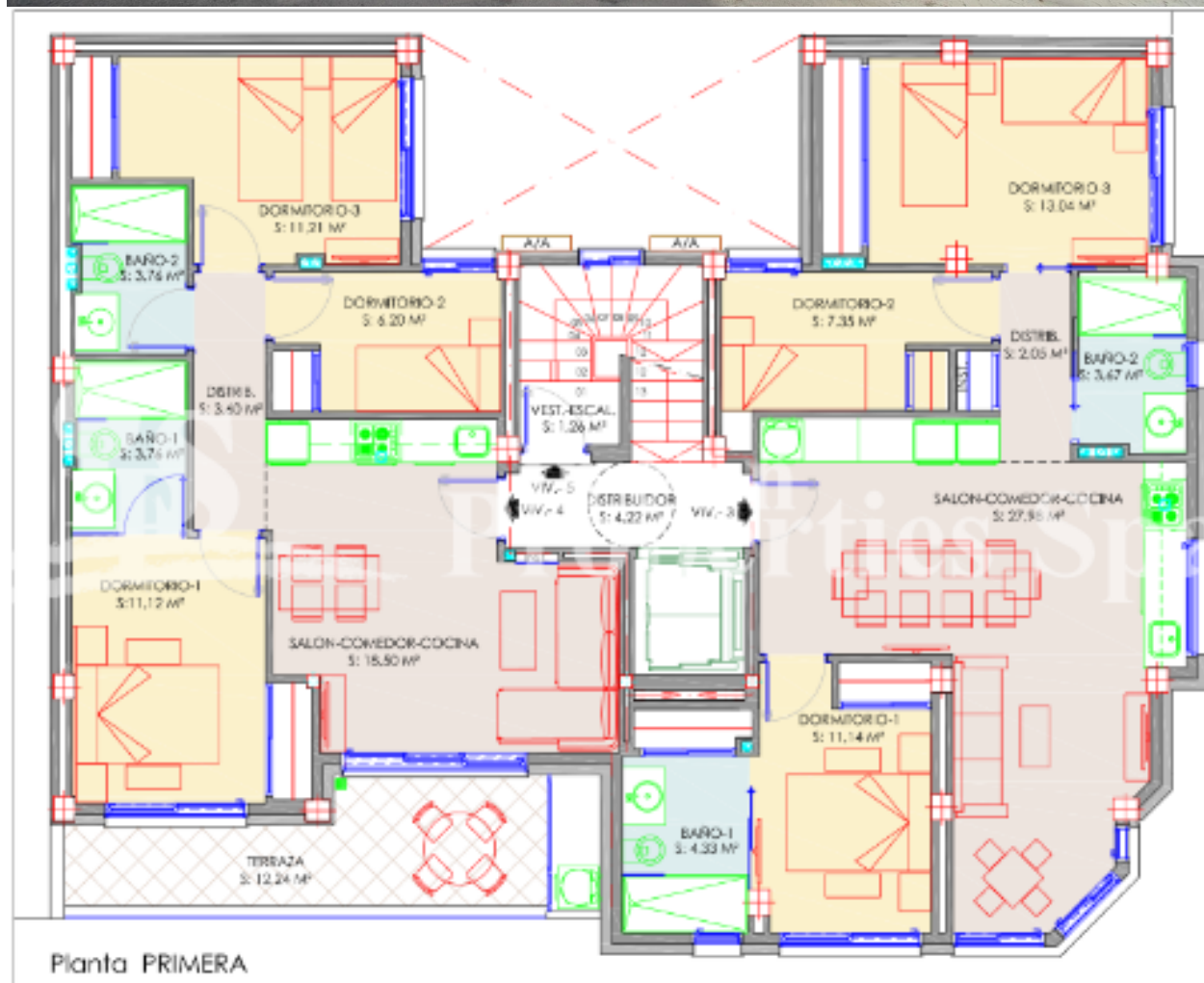


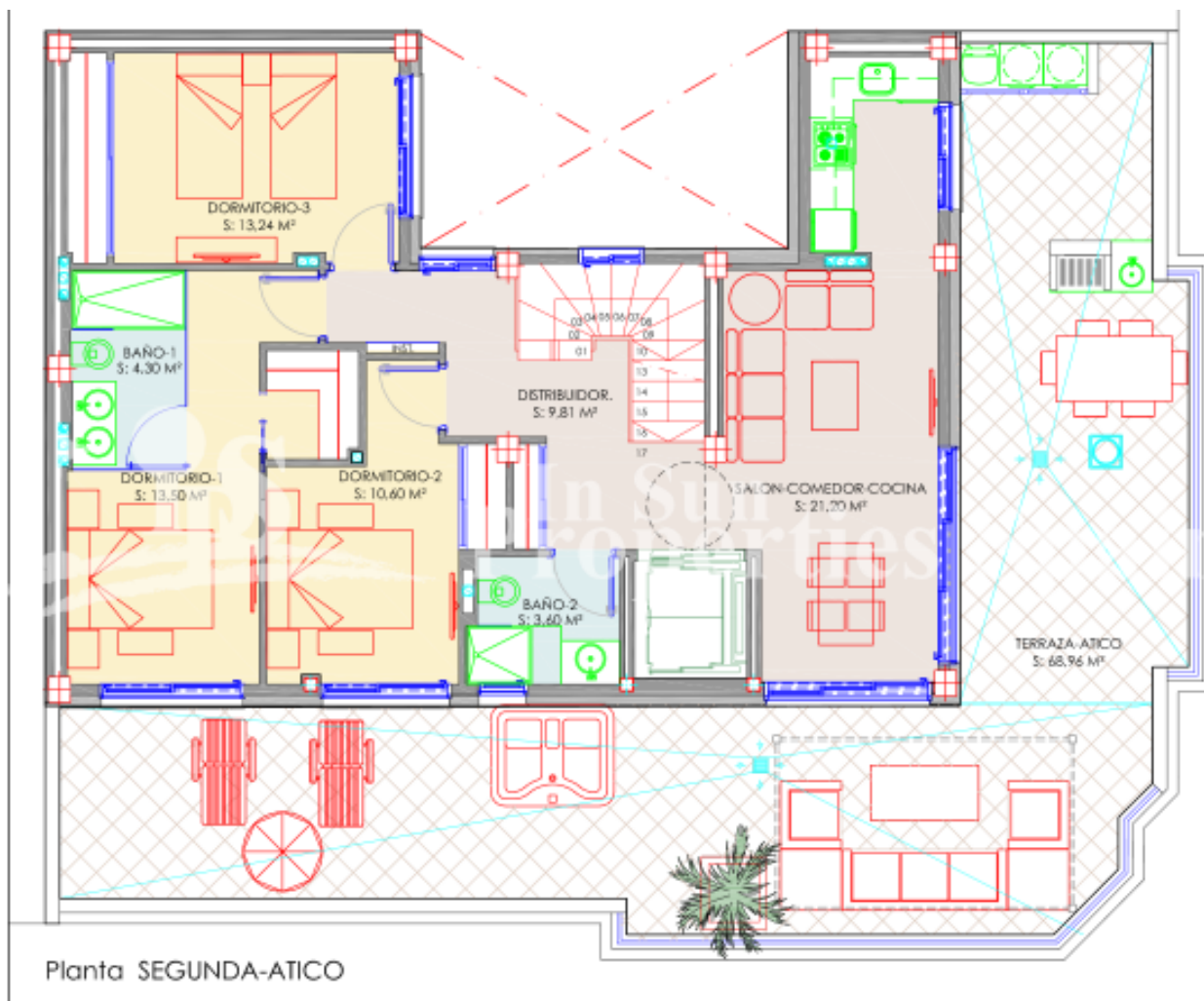












"OUR EXPERIENCE IS YOUR GUARANTEE"