



REF: # 7102

LA NUCIA/POLOP (POLOP)



#### INFO

PRICE:	298.500 €
PROPERTY TYPE:	Villa
CITY:	La Nucia/Polop (Polop)
BEDROOMS:	3
Bathrooms:	2
Build ( m2 ):	98
Plot ( m2 ):	203
Terrace ( m2 ):	-
Year:	
Floor:	-
Old price	234.000 €



#### DESCRIPTION

New modern villa at great prices for those who now do the reservation early in the construction period All the villas are detached on private plots and all the villas have a fantastic view. The villas are built in a high technical standard. Double exterior walls with insulation. Sliding double windows with air ducts. This model Marina are all in one levels a can offer three bedrooms and two bath rooms. Living rooms with and open kitchen Built-in wardrobe on the bedrooms. Fully fitted kitchen silica worktop. Including induction top, oven extractor fan and stainless steel sink. Fully furnished bathroom with bathroom furniture. Connection points of TV, Data in every room. Including central air conditioning system, (heat pump) Solar water heater (hot water tank) Finished garden with anti-slip tiles and artificial grass. There are several options on the differ models. Private swimming pool from 13.900 euro. Roof terraces/solarium from 16.900 euro Parking for either one or 2 cars slightly depending on plot size A large common area will also be built with a shared garden and a large communal swimming pool. Own playground for children. Camera monitored outdoor area. Common charging point for electric bicycles. The entire area will be in a closed area my entrance through an electric

gate controlled by remote control



<b>STYLE</b> <ul style="list-style-type: none"><li>• Modern</li></ul>	<b>DISTANCE TO :</b> <div>Beach : 7 Km</div> <div>Airport: 50 Km</div> <div>Town center : 2 Km</div>	<b>ORIENTATION</b> <div>South</div>	<b>FURNITURE</b> <ul style="list-style-type: none"><li>• Not furnished</li></ul>
<b>PARKING</b> <div>Garage no Cars : 1</div> <div>Parking no Cars: 1</div>	<b>MAIN LIVING AREA</b> <ul style="list-style-type: none"><li>• Bathroom en-suite</li></ul>	<b>FLOORING</b> <ul style="list-style-type: none"><li>• Tile floors</li></ul>	<b>KITCHEN</b> <ul style="list-style-type: none"><li>• Open kitchen</li><li>• Equipped kitchen</li></ul>
<b>GARDEN AND TERRACES</b> <ul style="list-style-type: none"><li>• Covered terrace</li><li>• Open terrace</li><li>• Exterior lights</li><li>• Automatic watering system</li><li>• Fruit trees</li><li>• Palm trees</li><li>• Play Ground</li><li>• Landscaped</li><li>• Fenced</li><li>• Lawn</li><li>• Stone walls</li><li>• Electric gate</li><li>• Private garden</li><li>• Communal Garden</li></ul>	<b>EXTRA</b> <ul style="list-style-type: none"><li>• Built in wardrobes</li><li>• Reinforced door</li><li>• Double glazed windows</li><li>• Satellite TV</li><li>• Internet</li></ul>		





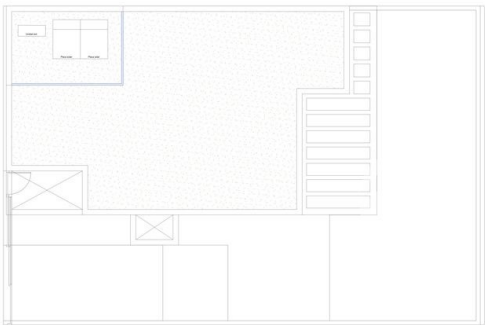








MARINA



TIPO 3D		30 + 28
SUPERFICIES CONSTRUIDAS (m <sup>2</sup> )		
SUP. CONSTRUIDA ÚTIL	80.02 m <sup>2</sup>	
SUP. CONSTRUIDA REJOLADA	0.37 m <sup>2</sup>	
SUP. CONSTRUIDA LAVADERO	2.80 m <sup>2</sup>	
TOTAL SUP. CONSTRUIDA PENSADA	83.19 m <sup>2</sup>	
SUPERFICIES ÚTILES EXTERIORES (m <sup>2</sup> )		
PL. PAVIMENTO APARCAMIENTO	15.40 m <sup>2</sup>	
TERRAZA ACCESO	13.70 m <sup>2</sup>	
TERRAZA DESCUBIERTA	14.80 m <sup>2</sup>	
TERRAZA PÉNDULA	15.02 m <sup>2</sup>	
SUPERFICIE ARBORIZADA	34.90 m <sup>2</sup>	
TOTAL ÚTIL EXTERIOR	113.82 m <sup>2</sup>	



PROYECTO BÁSICO DE UN INMUEBLE RESIDENCIAL  
JARDÍN COMPLEJO Y CENTRO SOCIAL

PROYECTADO POR: **CHAMIZA ARQUITECTOS**  
DISEÑO: **CHAMIZA ARQUITECTOS**  
DISEÑO: **CHAMIZA ARQUITECTOS**

PROYECTO: **PROYECTO BÁSICO DE UN INMUEBLE RESIDENCIAL JARDÍN COMPLEJO Y CENTRO SOCIAL**

PROYECTADO POR: **CHAMIZA ARQUITECTOS**

PROYECTO: **PROYECTO BÁSICO DE UN INMUEBLE RESIDENCIAL JARDÍN COMPLEJO Y CENTRO SOCIAL**

PROYECTO: **PROYECTO BÁSICO DE UN INMUEBLE RESIDENCIAL JARDÍN COMPLEJO Y CENTRO SOCIAL**

PROYECTO: **PROYECTO BÁSICO DE UN INMUEBLE RESIDENCIAL JARDÍN COMPLEJO Y CENTRO SOCIAL**

PROYECTO: **PROYECTO BÁSICO DE UN INMUEBLE RESIDENCIAL JARDÍN COMPLEJO Y CENTRO SOCIAL**

## MARINA ampliada



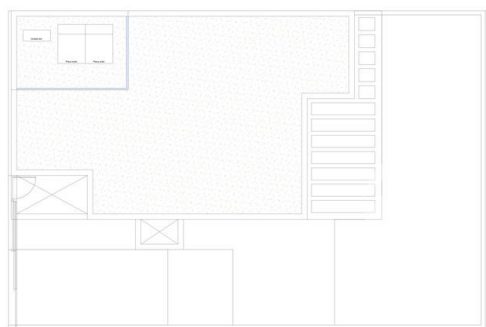
TIPO 3D-A con piscina 30 + 28

SUPERFICIES CONSTRUIDAS (m²)	
SUP. CONSTRUIDA VIVIENDA	47.28 m²
SUP. CONSTRUIDA PISCINA	1.08 m²
SUP. CONSTRUIDA LAVANDERO	1.00 m²
SUP. CONSTRUIDA BIODIVERSA	1.00 m²
SUP. CONSTRUIDA PISCINA	1.00 m²
TOTAL SUP. CONSTRUIDA PISCINA	1.08 m²

SUPERFICIES ÚTILES EXTERIORES (m²)	
PL. PAVIMENTO APARCAMIENTO	15.40 m²
TERRAZA ACCESO	1.00 m²
TERRAZA DESCUBERTA	1.00 m²
TERRAZA PISCINA	1.00 m²
LAVANDERO	1.00 m²
SUPERFICIE LAVANDERO	1.00 m²
SOLARIMIO	1.00 m²
TOTAL ÚTIL EXTERIOR	18.40 m²



## MARINA



TIPO 3D 30 + 28

SUPERFICIES CONSTRUIDAS (m²)	
SUP. CONSTRUIDA VIVIENDA	47.28 m²
SUP. CONSTRUIDA PISCINA	1.08 m²
SUP. CONSTRUIDA LAVANDERO	1.00 m²
TOTAL SUP. CONSTRUIDA PISCINA	1.08 m²

SUPERFICIES ÚTILES EXTERIORES (m²)	
PL. PAVIMENTO APARCAMIENTO	15.40 m²
TERRAZA ACCESO	1.00 m²
TERRAZA DESCUBERTA	1.00 m²
TERRAZA PISCINA	1.00 m²
LAVANDERO	1.00 m²
SUPERFICIE LAVANDERO	1.00 m²
SOLARIMIO	1.00 m²
TOTAL ÚTIL EXTERIOR	18.40 m²



***"OUR EXPERIENCE IS YOUR GUARANTEE"***