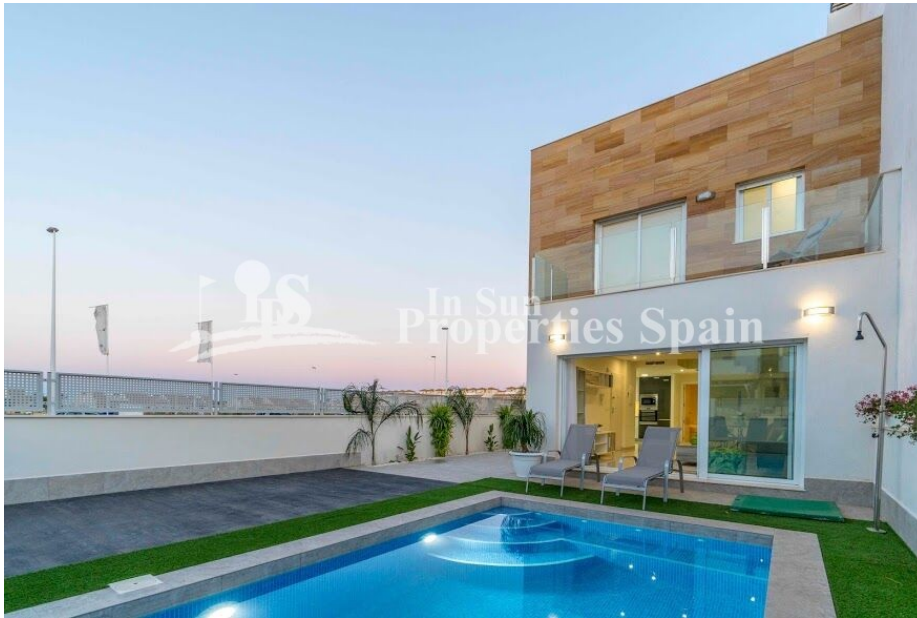




REF: # 7001

COSTA MURCIA (SAN PEDRO DEL PINATAR)



INFO

PRICE:	219.000 €
PROPERTY TYPE:	Villa
CITY:	Costa Murcia (San Pedro del Pinatar)
BEDROOMS:	3
Bathrooms:	3
Build (m2):	115
Plot (m2):	180
Terrace (m2):	35
Year:	2020
Floor:	-
Old price	-



DESCRIPTION

New Build Quad Villas located just 500m from the centre of LO PAGAN and only 3km FROM THE BEACH OF EL MOJON. 115m2 Villas set on a plot of 180m2 with private 5x3 swimming pool and 35m2 sunny solarium. To the ground floor you have an open plan living concept incorporating the furnished kitchen (included are whitegoods, oven, vitroceramic hob and extractor. Washing machine, dishwasher, fridge-freezer and microwave) with the living and dining space. There is a bedroom and bathroom on the ground floor also. To the first floor you have two further bedrooms and 2 bathrooms. All bathrooms have underfloor heating and there are electric shutters to the master bedroom and living room. 80l aerothermic water heater and pre-installation of AC. Lo Pagan, famous for its mudbaths is situated on the north shore of the Mar Menor and has merged with San Pedro del Pinatar to become one big town. It has a beautiful beach, promenade and small marina. The location of these Villas offers something for everyone; For shopping you are just over 5 minutes from Dos Mares commercial centre and for Golf enthusiasts you

are just 15 minutes from Lo Romero Golf. Just 30 minutes from Corvera Airport.



STYLE <ul style="list-style-type: none">• Modern• Contemporary	VIEWS <ul style="list-style-type: none">• Panoramic views	AIRCONDITIONING <ul style="list-style-type: none">• Central airconditioning	DISTANCE TO : <div>Beach : 3 Km</div> <div>Airport: 40 Km</div> <div>Town center : 500 m</div>
ORIENTATION <div>South East West</div>	FURNITURE <ul style="list-style-type: none">• Not furnished	PARKING <div>Parking no Cars: 1</div>	FLOORING <ul style="list-style-type: none">• Tile floors• Stone floors
KITCHEN <ul style="list-style-type: none">• Open kitchen• Equipped kitchen• Granite countertop	GARDEN AND TERRACES <ul style="list-style-type: none">• Open terrace• Stone walls• Private garden	EXTRA <ul style="list-style-type: none">• Built in wardrobes• Reinforced door• Double glazed windows	







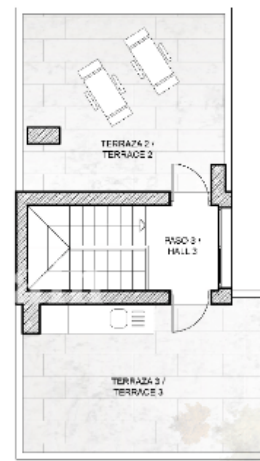
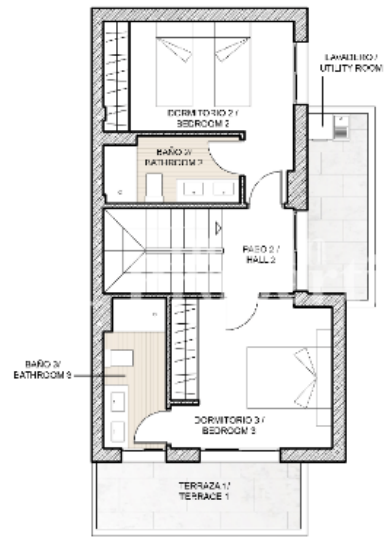
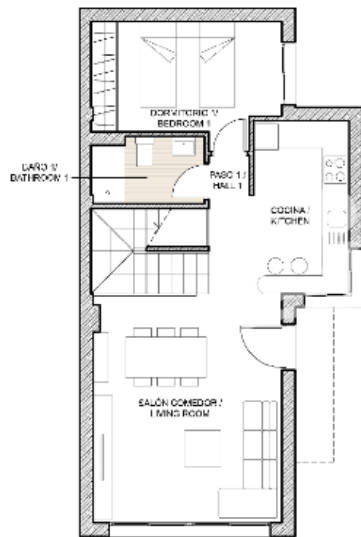












Planta Solarium / Solarium Floor
Superficies útiles / Useful surface





"OUR EXPERIENCE IS YOUR GUARANTEE"