



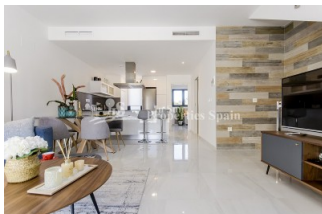
REF: # 6926

SAN MIGUEL (BIGASTRO)



INFO

PRICE:	169.000 €
PROPERTY TYPE:	Townhouse
CITY:	San Miguel (Bigastro)
BEDROOMS:	3
Bathrooms:	3
Build (m2):	151
Plot (m2):	104
Terrace (m2):	40
Year:	2020
Floor:	-
Old price	-



DESCRIPTION

18 brand new Townhouses in BIGASTRO located next to the scenic and recreational area of La Pedrera, with magnificent views of the Sierra de la Vega Baja, all amenities accessible in the town of Bigastro and in the city of Orihuela (Carrefour hypermarket), and only 25 minutes from the beaches of Orihuela Costa and Torrevieja on the Costa Blanca. It is an authentic home to live in and set to be delivered in July 2020. On the ground floor we find a parking space and rear terrace with access to the main street, a large living-dining area and open kitchen, 1 bedroom, 1 bathroom and front terrace with views and access to the pool. First floor is distributed in 2 bedrooms with fitted wardrobes, 2 bathrooms en suite and terrace. At the top we find a large solarium with nice views of the surroundings, the perfect place to enjoy our most precious asset: a sun that shines most of the year. The qualities and finishes of this new building are excellent: all the properties include automated blinds, underfloor heating in all bathrooms, pre-installation of air conditioning ducts, hydromassage column in bathroom...In addition, for a limited time, it is also included in the property as a gift courtesy of the promoter;

Interior and exterior lighting & Shower screens in bathrooms. All the properties have very good orientation and direct access to the 482m2 of communal area; central green area and community pool.

ENERGETIC CERTIFIED

energy house

Image type unknown

<https://www.iberiaproperty.com//assets/images/viass/>

STYLE <ul style="list-style-type: none">• Modern• Contemporary	AIRCONDITIONING <ul style="list-style-type: none">• Central airconditioning	DISTANCE TO : <div>Beach : +10 Km</div> <div>Airport: 40 Km</div> <div>Town center : 500 m</div>	ORIENTATION <div>South East West</div>
FURNITURE <ul style="list-style-type: none">• Not furnished	PARKING <div>Parking no Cars: 1</div>	MAIN LIVING AREA <ul style="list-style-type: none">• Storage• Bathroom en-suite	FLOORING <ul style="list-style-type: none">• Tile floors• Stone floors
KITCHEN <ul style="list-style-type: none">• Open kitchen• Equipped kitchen• Granite countertop	GARDEN AND TERRACES <ul style="list-style-type: none">• Open terrace• Landscaped• Lawn• Stone walls• Private garden• Communal Garden	HEATING <ul style="list-style-type: none">• Floor heating bathrooms	EXTRA <ul style="list-style-type: none">• Built in wardrobes• Reinforced door• Double glazed windows• Storage room





















PLANTA SOLARIUM

SUPERFICIE SOLARIUM

39,90 m²



PLANTA PRIMERA

SUPERFICIES PRIMERA

DORMITORIO-1	13,45 m ²
BAÑO-1	3,65 m ²
DORMITORIO-2	9,80 m ²
BAÑO-2	3,65 m ²
TERRAZA 1	1,95 m ²
TERRAZA 2	5,40 m ²
DISTRIBUIDOR	3,35 m ²
ACCESO SOLARIUM	9,65 m ²



PLANTA BAJA

SUPERFICIES PLANTA BAJA

SALÓN-COMEDOR-COCINA	35,00 m ²
DORMITORIO-3	7,90 m ²
BAÑO-3	3,35 m ²
TERRAZA	21,17 m ²
PATIO	3,60 m ²
TERRAZA TRASERA	28,60 m ²

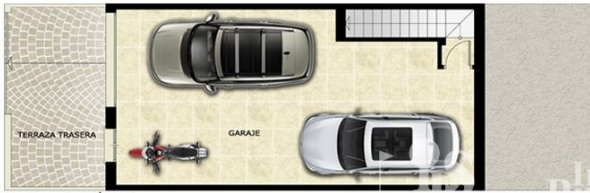
TIPO B

3 DORMITORIOS + 3 BAÑOS
3 BEDROOMS + 3 BATHROOMS





PLANTA BAJA



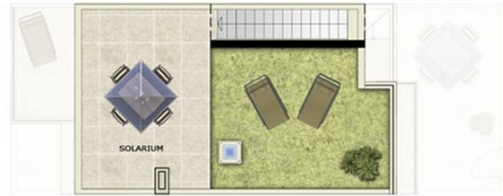
PLANTA SEMISÓTANO

SUPERFICIES PLANTA BAJA

SALÓN-COMEDOR-COCINA	35,15 m ²
DORMITORIO-3	7,90 m ²
BAÑO-3	3,20 m ²
TERRAZA	21,17 m ²
PATIO	3,30 m ²

SUPERFICIES PLANTA SEMISÓTANO

GARAJE	54,60 m ²
TERRAZA TRASERA	16,50 m ²



PLANTA SOLARIUM



PLANTA PRIMERA

SUPERFICIE SOLARIUM

39,90 m²

SUPERFICIES PRIMERA

DORMITORIO-1	13,45 m ²
BAÑO-1	3,65 m ²
DORMITORIO-2	9,80 m ²
BAÑO-2	3,65 m ²
TERRAZA 1	1,95 m ²
TERRAZA 2	5,20 m ²
DISTRIBUIDOR	3,35 m ²
ACCESO SOLARIUM	9,65 m ²

TIPO A - SEMISÓTANO / SEMI BASEMENT

3 DORMITORIOS + 3 BAÑOS
3 BEDROOMS + 3 BATHROOMS



"OUR EXPERIENCE IS YOUR GUARANTEE"