



REF: # 6793

CALPE/MORAIRA (CALPE CENTRO)



INFO

PRICE:	199.000 €
PROPERTY TYPE:	Apartment
CITY:	Calpe/Moraira (Calpe centro)
BEDROOMS:	2
Bathrooms:	2
Build (m2):	80
Plot (m2):	-
Terrace (m2):	12
Year:	2020
Floor:	-
Old price	-



DESCRIPTION

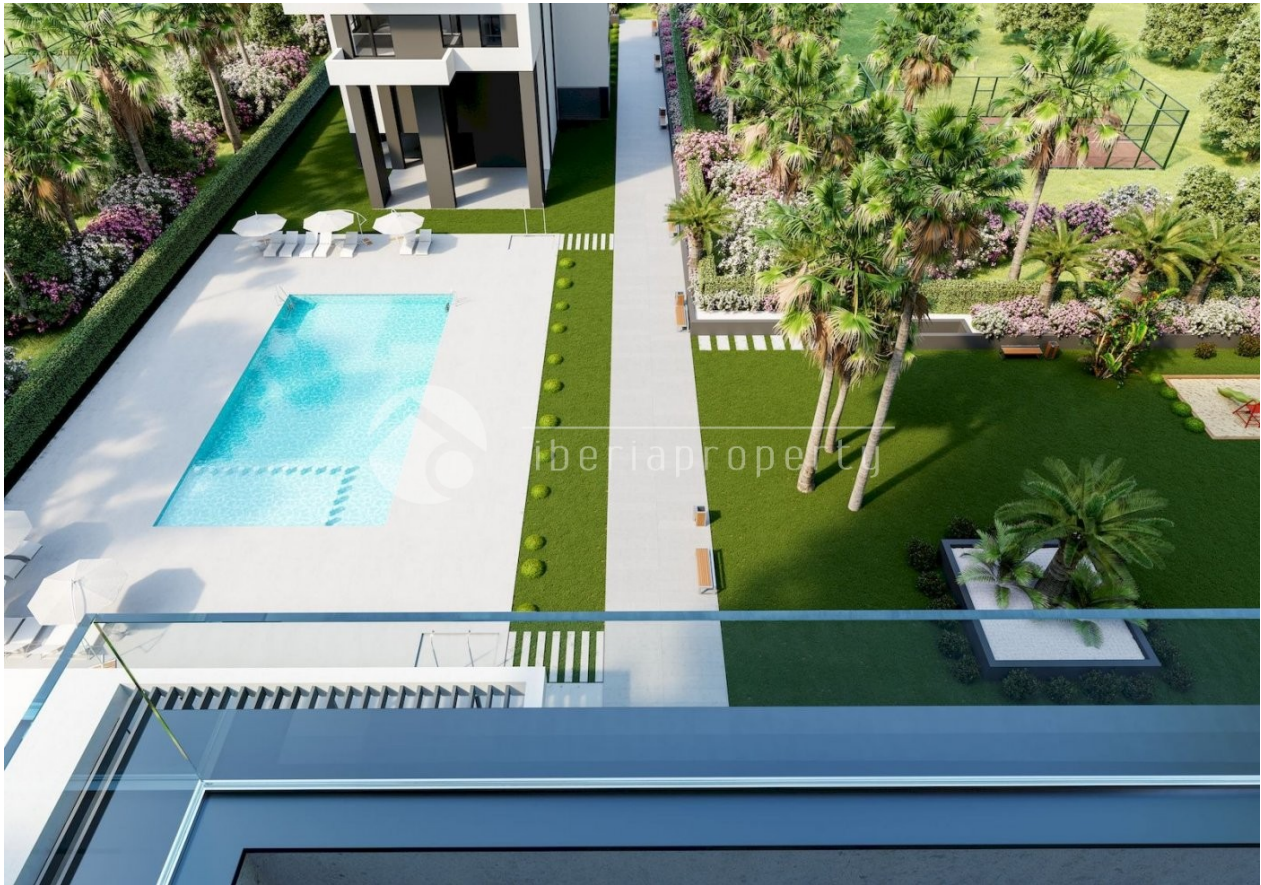
Two new buildings in the heart of Calpe with 2 and 3 bedroom apartments. Garage space and storage space in basement for 15.000,- € extra. Modern style with open plan kitchen. Large windows give a light apartment. Large green common areas with swimmingpool. 400m walking distance to Calpes sandy south facing beach and 500m from all the fish restaurants. Building start january 2020, finished january 2022. Dont miss this opportunity 37 of a total of 85 apartments already sold.

ENERGETIC CERTIFIED



STYLE	VIEWS	AIRCONDITIONING	DISTANCE TO :
<ul style="list-style-type: none">• Modern	<ul style="list-style-type: none">• Panoramic views• Mountain views	<ul style="list-style-type: none">• Central airconditioning	Beach : 500 m
			Airport: 70 Km
			Town center : 100 m
FURNITURE	PARKING	MAIN LIVING AREA	FLOORING
<ul style="list-style-type: none">• Not furnished	Garage no Cars : 1	<ul style="list-style-type: none">• Bathroom en-suite	<ul style="list-style-type: none">• Tile floors
KITCHEN	GARDEN AND TERRACES	EXTRA	
<ul style="list-style-type: none">• Open kitchen• Equipped kitchen• Granite countertop	<ul style="list-style-type: none">• Covered terrace• Exterior lights• Tennis court• Automatic watering system• Fruit trees• Palm trees• Play Ground• Landscaped• Fenced• Lawn• Stone walls• Communal Garden	<ul style="list-style-type: none">• Built in wardrobes• Reinforced door• Double glazed windows• Door bell with camera• Satellite TV• Security guard• Lift• Internet• Concierge	



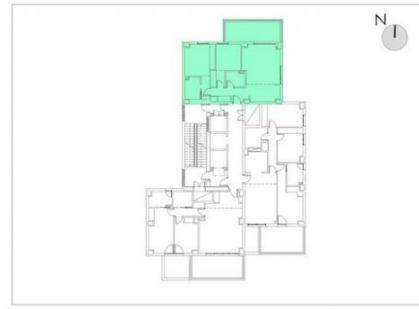










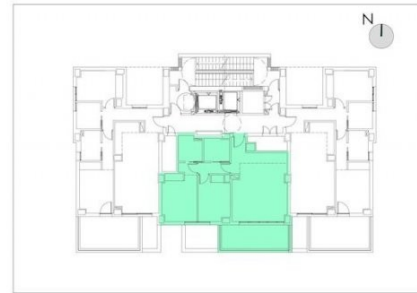


ESCALA GRAFICA



VIVIENDA 2.3.3, 2.5.3, 2.7.3, 2.9.3, 2.11.3, 2.13.3

Superficie útil viv.	Superficie construida	Superficie terrazas	Superficie total
60,40m2	101,95m2	16,20m2	118,15m2



ESCALA GRAFICA



VIVIENDA 1.3.2, 1.5.2, 1.7.2, 1.9.2, 1.11.2, 1.13.2

Superficie útil viv.	Superficie construida	Superficie terrazas	Superficie total
58,30m2	94,90m2	13,50m2	108,40m2







"OUR EXPERIENCE IS YOUR GUARANTEE"