



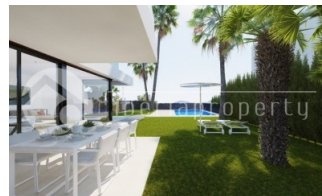
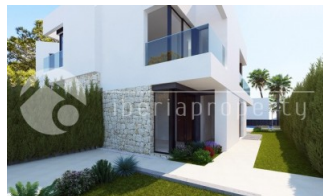
REF: # 6659

FINESTRAT (SIERRA CORTINA)



#### INFO

PRICE:	590.000 €
PROPERTY TYPE:	Villa
CITY:	Finestrat (Sierra Cortina)
BEDROOMS:	3
Bathrooms:	4
Build ( m2 ):	405
Plot ( m2 ):	531
Terrace ( m2 ):	4 + 18 + 18 + 15 + 5
Year:	2020
Floor:	-
Old price	-



#### DESCRIPTION

New promotion in Sierra Cortina Finestrat. Urbanization consisting of 17 villas built on individual plots, each with their own private pool and large garden. The corner houses (4) also have a cellar space of approximately 150 m2. Each villa has 3 bedrooms with fitted wardrobes and 2 villas with 4 bathrooms. Bathroom ensuite and walk-in shower. Built according to the latest standards with state-of-the-art installations. The so-called smart houses. Fully equipped open kitchen. The villa is surrounded by terraces, such that each bedroom has direct access to a private terrace. Central pre-installation for Airco and HWS installation with one unit. Beautiful views over the sea and mountains.

#### ENERGETIC CERTIFIED



STYLE	VIEWS	AIRCONDITIONING	MAIN LIVING AREA
<ul style="list-style-type: none"><li>• Modern</li></ul>	<ul style="list-style-type: none"><li>• Panoramic views</li><li>• Sea views</li><li>• Mountain views</li></ul>	<ul style="list-style-type: none"><li>• Central airconditioning</li></ul>	<ul style="list-style-type: none"><li>• Bathroom en-suite</li></ul>
KITCHEN	GARDEN AND TERRACES	EXTRA	
<ul style="list-style-type: none"><li>• Open kitchen</li><li>• Equipped kitchen</li></ul>	<ul style="list-style-type: none"><li>• Covered terrace</li><li>• Open terrace</li><li>• Play Ground</li><li>• Private garden</li></ul>	<ul style="list-style-type: none"><li>• Built in wardrobes</li><li>• Door bell with camera</li><li>• Video security</li></ul>	





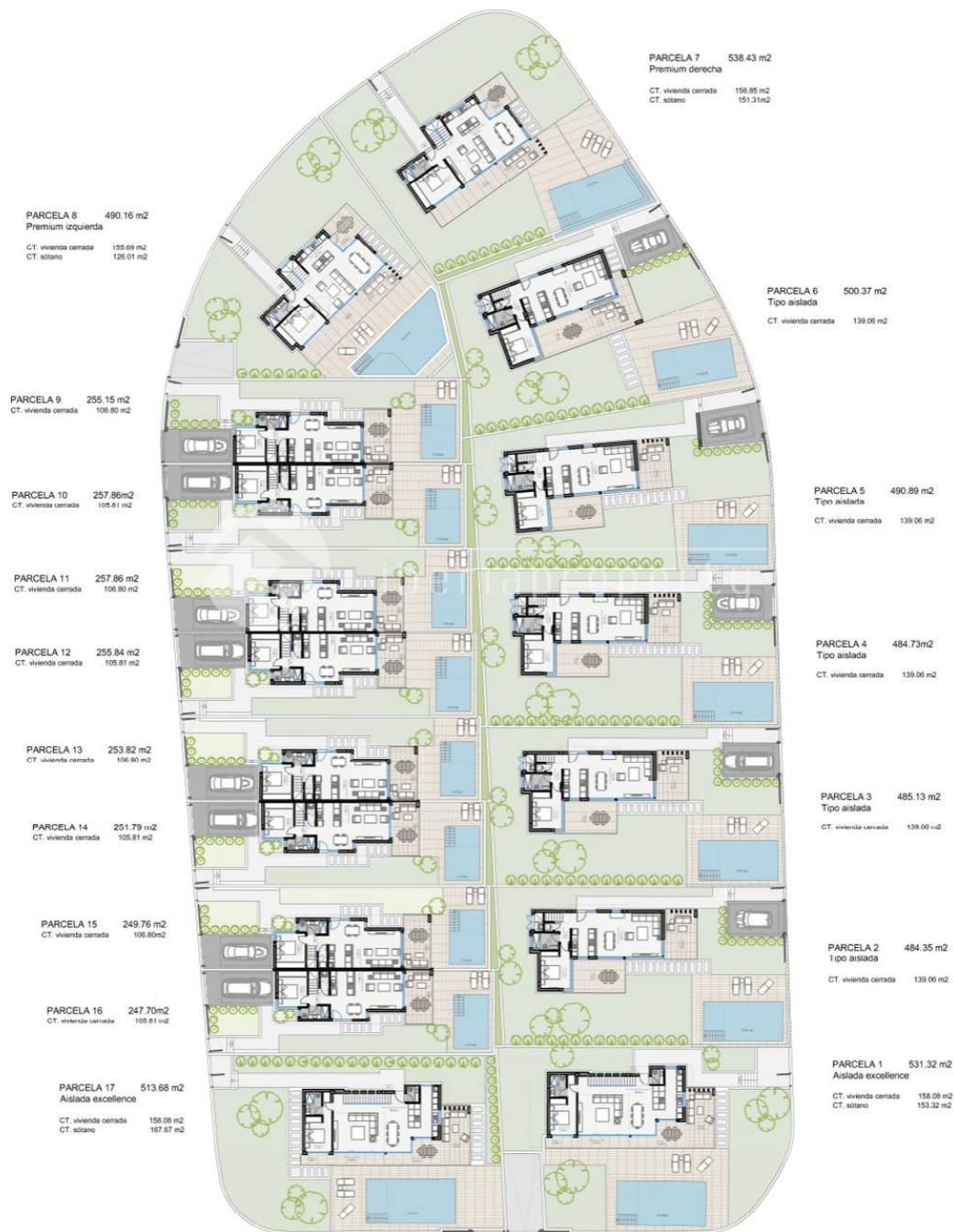


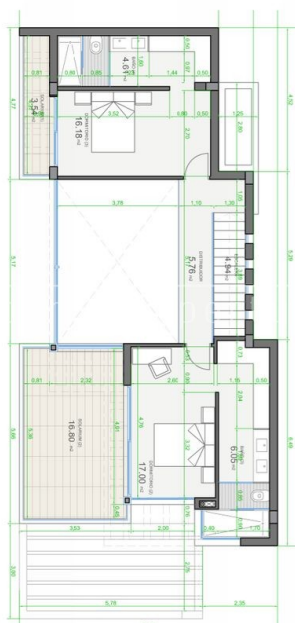
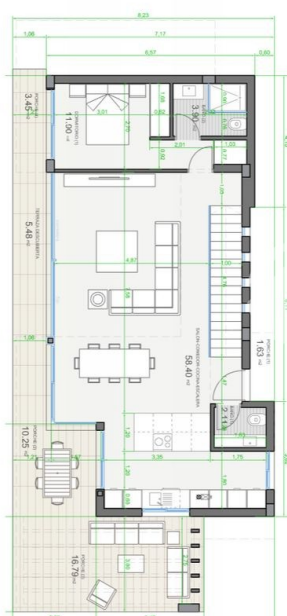




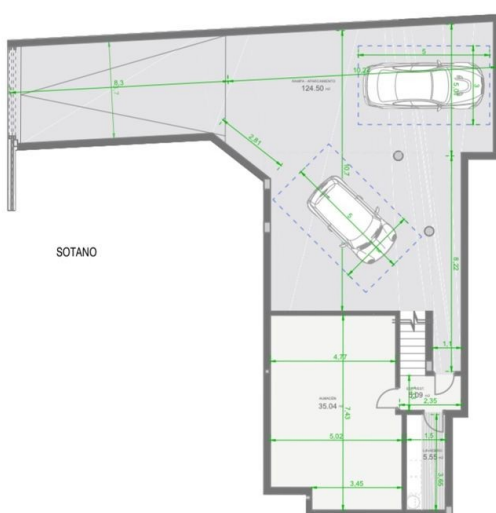
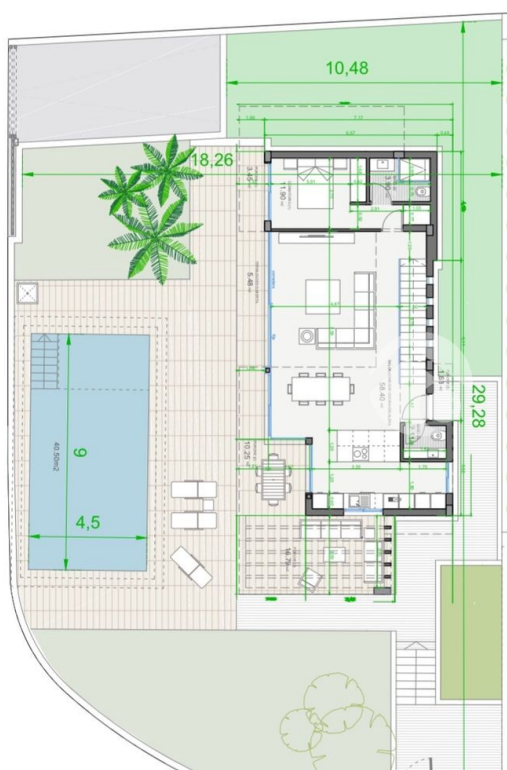
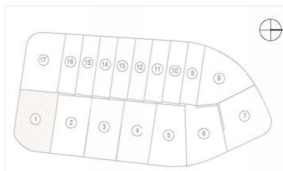




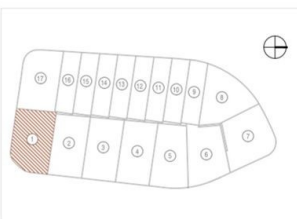




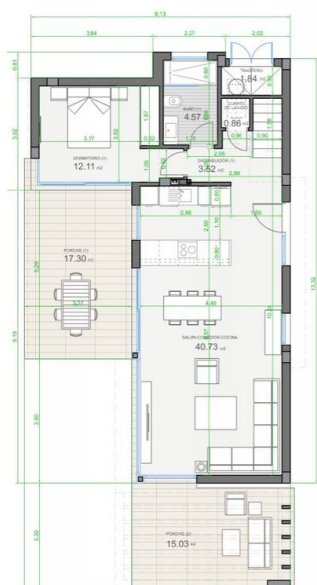
PARCELA 1	
Superficie de parcela	<b>531.32</b>
Superficie construida vivienda	158.08
Superficie construida PB	88.19
Superficie construida P1	62.22
Sótano	153.32
Superficie terraza descubierta solarium 1 P1	4.34
Superficie terraza descubierta solarium 2 P1	18.34
Superficie terraza descubierta pérgola PB	18.09
Superficie terraza cubierta	15.33
Superficie terraza descubierta	5.48
Piscina	40.5
Total superficies construidas proyecto	<b>405.81</b>



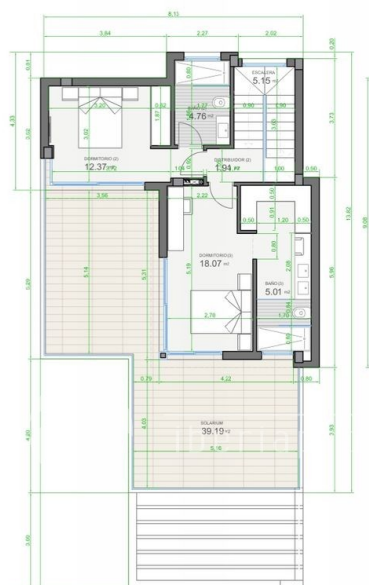
PARCELA 1	
Superficie de parcela	531,32
Superficie construida vivienda	158,08
Superficie construida PB	88,19
Superficie construida P1	62,22
Sótano	153,32
Superficie terraza descubierta solarium 1 P1	4,34
Superficie terraza descubierta solarium 2 P1	18,34
Superficie terraza descubierta pérgola PB	18,09
Superficie terraza cubierta	15,33
Superficie terraza descubierta	5,48
Piscina	40,5
Total superficies construidas proyecto	405,81



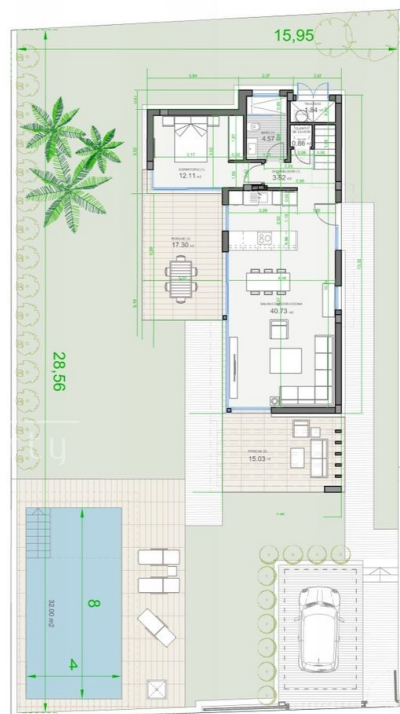




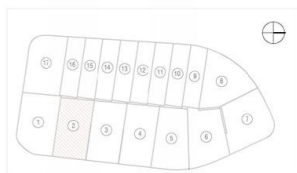
PLANTA BAJA



PLANTA ALTA



PARCELA E: 1/125

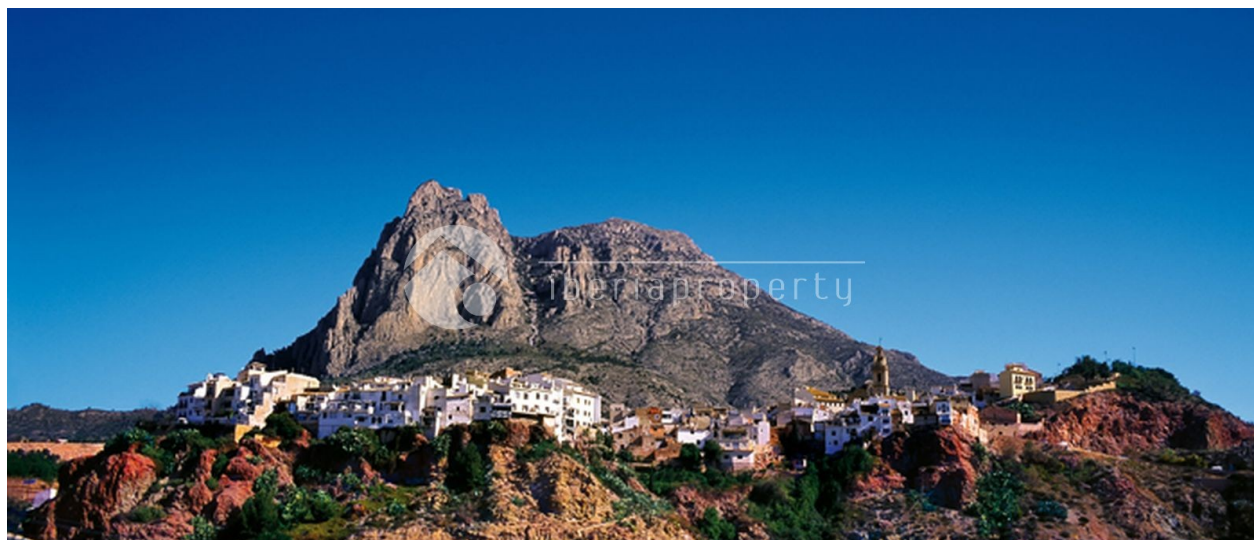


PARCELA 02	
Superficie de parcela	484,35
Superficie construida vivienda	139,06
Superficie construida PB	77,27
Superficie construida P1	53,14
Superficie terraza cubierta PB (100%)	17,30
Superficie terraza descubierta solarium P1	42,39
Superficie terraza descubierta pέργola PB	16,86
Piscina	32,00
Total superficies construidas proyecto	238,96

NOTA LEGAL:  
La presente información gráfica se orientativa. La sociedad propietaria se reserva el derecho a efectuar las modificaciones que fueran motivadas por exigencias técnicas, legales o comerciales.



















**"OUR EXPERIENCE IS YOUR GUARANTEE"**