



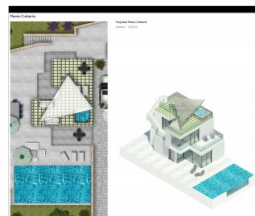
REF: # 6402

FINESTRAT (FINESTRAT HILLS)



INFO

PRICE:	475.000 €
PROPERTY TYPE:	Villa
CITY:	Finestrat (Finestrat Hills)
BEDROOMS:	3
Bathrooms:	3
Build (m2):	224
Plot (m2):	546
Terrace (m2):	125+52
Year:	2018
Floor:	2
Old price	-



DESCRIPTION

The complex is developing a complex of 15 spacious villas with plots from 428 m2 to 776 m2 with the possibility of 4 bedrooms and 4 bathrooms. Safety Glass railing. Built-in wardrobes with paneling on the inside. Security entrance door. Motorized sliding door for the driveway. Home automation system with lighting control and video door opener. Bathroom tiled in porcelain or white paste stoneware tiles. Electrical installation according to Low Voltage Electro Technical Regulations. Mechanisms Niessen high end. Installation of plumbing in accordance with Regulation. Water points in barbecue and garden areas. TV and telephone installation. Installation of ducted air conditioning on the ground floor and first floor. Pre-installation for air conditioning in the basement. Pool with individual saltwater system on ground floor with safety glass front. Pool with individual saltwater system in the basement. (Only available on house type A) Blinds on windows. Basic lighting with

LED strips and LED spotlights. Floor heating in all bathrooms. Different trees in the garden. Located in one of the most charming regions on the Costa Blanca, balcony of Finestrat, surrounded by beautiful mountains with wonderful views of the Benidorm coast. Integrated into the hilly landscape of Finestrat, the houses are built with the aim to enjoy the natural environment that surrounds them and the surrounding facilities including three golf courses, two theme and recreation parks, and the beautiful beaches of Cala Finestrat and Benidorm. The villas are of the highest quality thanks to strict quality control performed by licensed companies with the distinction of ISO 9000. The employed materials are of world leading brands and benchmarks in interior design, such as Saloni, Inalco, Villeroy & Boch, Fantini, Dica, Bosch, etc. The approved building process is a reference both in quality of the materials and the finish. The security glass with cameras, and the type of insulation used in the construction of the villas, ensures a pleasant environment with a minimum of electricity consumption.



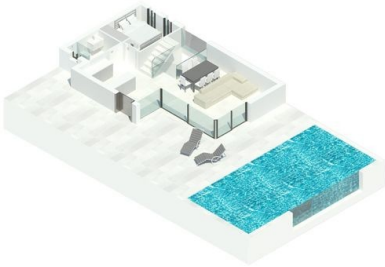
STYLE	VIEWS	AIRCONDITIONING	DISTANCE TO :
<ul style="list-style-type: none">• Modern	<ul style="list-style-type: none">• Panoramic views• Sea views• Mountain views	<ul style="list-style-type: none">• Central airconditioning	Beach : 3 Km <hr/> Airport: 50 Km <hr/> Town center : 1 Km
ORIENTATION	FURNITURE	MAIN LIVING AREA	FLOORING
South east <hr/>	<ul style="list-style-type: none">• Not furnished	<ul style="list-style-type: none">• Bathroom en-suite	<ul style="list-style-type: none">• Tile floors
KITCHEN	GARDEN AND TERRACES	HEATING	EXTRA
<ul style="list-style-type: none">• Open kitchen• Equipped kitchen	<ul style="list-style-type: none">• Covered terrace• Open terrace• Exterior lights• Automatic watering system• Fruit trees• Palm trees• Play Ground• Fenced• Stone walls• Electric gate• Outdoor kitchen• BBQ/grill• Private garden	<ul style="list-style-type: none">• Floor heating bathrooms	<ul style="list-style-type: none">• Built in wardrobes• Alarm• Reinforced door• Double glazed windows• Door bell with camera• Satellite TV• Video security• Storage room• Laundry room• Internet



Localización de la parcela B-7. Vivienda tipo B



El complejo residencial se encuentra situado en uno de los parajes con mayor encanto de la costa levantina, Balcón de Finestrat. Rodeado de montañas y con unas vistas privilegiadas hacia la costa de Benidorm, Habitat Creativa ha creado un complejo de 16 villas de 225 m². La superficie de la parcela de esta villa abarca 546,04 m², y está programada con 4 dormitorios y 4 cuartos de baño.



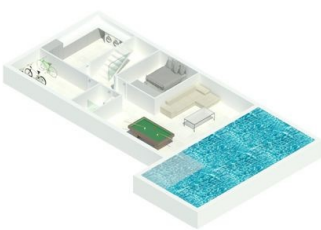
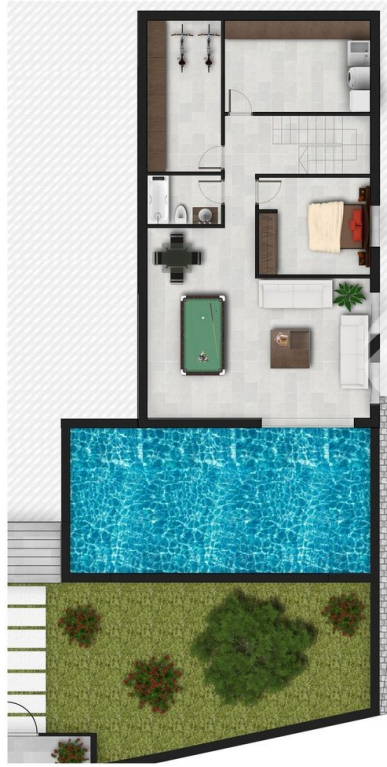
Programa Planta Baja

Cocina	9,97 m ²
Salón	30,29 m ²
Dormitorio	9,40 m ²
Baño	4,00 m ²
Terrazas	125,23 m ²

Planta Baja



Planta Sótano



Programa Planta Sótano

Salón	34,75 m ²
Dormitorio	11,40 m ²
Lavadero	13,98 m ²
Trastero	11,75 m ²
Baño	3,85 m ²
Escaleras	10,00 m ²

Planta Primera



Programa Planta Primera

Dormitorio 1	11,27 m ²
Baño 1	2,65 m ²
Terraza 1	8,15 m ²
Dormitorio 2	12,24 m ²
Baño 2	4,10 m ²
Terraza 2	13,45 m ²
Pasillo	2,44 m ²



Planta Cubierta



Programa Planta Cubierta

Solarium	52,33 m ²
----------	----------------------

