



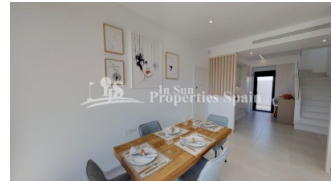
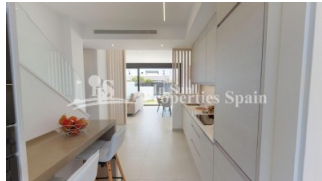
REF: # 6380

COSTA MURCIA (SAN PEDRO DEL PINATAR)



INFO

PRICE:	329.950 €
PROPERTY TYPE:	Villa
CITY:	Costa Murcia (San Pedro del Pinatar)
BEDROOMS:	3
Bathrooms:	3
Build (m2):	128
Plot (m2):	190
Terrace (m2):	52
Year:	2019
Floor:	-
Old price	-



DESCRIPTION

New release of the popular premium Villas in SAN PEDRO DEL PINATAR, 600m/8 minutes walk from the beach. These 3 bedroom, 3 bathroom homes of 128m2 build are on minimum 190m2 plots and set in a nice residential area. Each with their own private pool, 52m2 garden and garage. Just 700m from the beaches. These off plan villas will have 2 levels and comprise of a large spacious open plan lounge with dining area and separate kitchen which comes fitted with modern design wall and base units equipped with Hob, oven and extractor fan. The 3 double bedrooms all come with fitted wardrobes and both first floor models have private bathrooms, there is also a family bathroom and utility room on the ground floor. Outside the property a generous garden with drive leading to a garage plus large patio areas offering lots of 'alfresco dining' options for an outdoor kitchen (next to the pool area), a private pool. The properties also come with installed air-con, kitchen appliances and pool cascade. Optional solarium (+15,500€) This 'exclusive' development off private homes are situated in a residential area – close to all amenities(8min walk), park areas, the beach (8min walk), bars, shops

and restaurants. The Mar Menor and all the facilities it has to offer is just a short 10 minute walk away, there are many golf courses nearby. This 'exclusive' development of private homes are situated in a residential area – close to all amenities, walking distance to park areas, the beach, bars, shops and restaurants.



STYLE <ul style="list-style-type: none">• Modern• Contemporary	VIEWS <ul style="list-style-type: none">• Panoramic views	DISTANCE TO : <div>Beach : 500 m</div> <div>Airport: 20 Km</div> <div>Town center : 1 Km</div>	ORIENTATION <div>South East West</div>
FURNITURE <ul style="list-style-type: none">• Not furnished	PARKING <div>Garage no Cars : 1</div>	FLOORING <ul style="list-style-type: none">• Tile floors• Stone floors	KITCHEN <ul style="list-style-type: none">• Open kitchen• Equipped kitchen
GARDEN AND TERRACES <ul style="list-style-type: none">• Covered terrace• Open terrace• Private garden	EXTRA <ul style="list-style-type: none">• Built in wardrobes• Reinforced door• Double glazed windows		





















"OUR EXPERIENCE IS YOUR GUARANTEE"