



REF: # 6349

BENITACHELL



INFO

PRICE: 2.450.000 €

PROPERTY TYPE: Villa

CITY: Benitachell

BEDROOMS: 6

Bathrooms: 6

Build (m2): 1.165

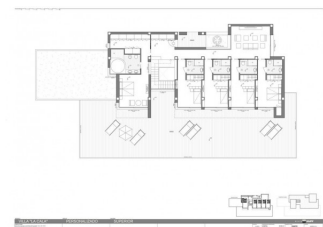
Plot (m2): 2.393

Terrace (m2): -

Year: -

Floor: -

Old price -



DESCRIPTION

Villa la Cala, a property with enormous dimensions, situated on a plot of 2,493sqm, in the exclusive Jazmines residential area at the Cumbre del Sol urbanization, an area with access restricted solely to property owners, which houses many luxury properties. Villa la Cala is distributed over three levels, fruit of a unique and exclusive design, with spacious, open and sunny rooms, all facing towards the Mediterranean Sea, making the most of the fabulous views. The access to the house is on the upper floor, where 5 of the total of 6 bedrooms of the house are situated. The main bedroom comprises a spacious walk-in wardrobe and an en-suite bathroom with a shower and a bath with sea views. The other 4 bedrooms on this floor also have their own en-suite shower rooms and wardrobes. All the bedrooms have direct access to the terrace and share a communal TV room. The steps guide us down to the main floor of the house, the daytime area, with a spacious living room, a kitchen with an island, a storage room, a laundry room, another bedroom with en-suite bathroom, a guest toilet and parking for 3 vehicles. In addition, there is a large outdoor terrace to relax on and enjoy the infinity pool with 60sqm of water surface, plus a spacious veranda with an outdoor dining area and

relaxation area where you can continue enjoying the uninterrupted sea views. This fantastic property also contains an open plan area of over 100sqm, situated on the lowest floor, which can be finished off depending on the requirements of the purchaser.



VIEWS

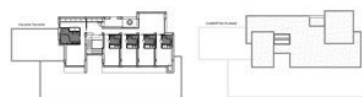
- Sea views

KITCHEN

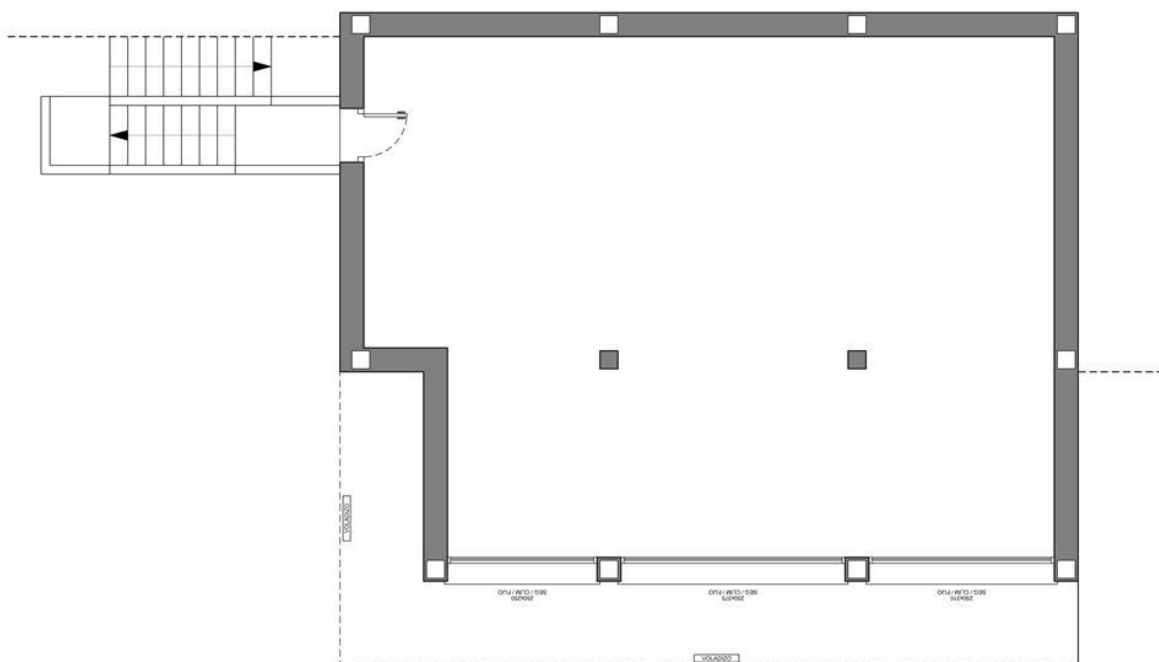
- Equipped kitchen








Escala Gráfica:



MODELO	ESTILO	CALIDAD		GRUPO  VAPF	
VILLA "LA CALA"		PERSONALIZADO		SUPERIOR	
OBSERVACIONES ESCALÓN EN SALIDAS AL EXTERIOR VENTILACIONES A 20cm. DEL TECHO.	PORTON ALUMINO CARPINTERIA ALUMINO	SUPERFICIES CONSTRUIDAS VACIO SANITARIO	112.40 m ²	NUMERO PLANO 54398	CLIENTE GARSIVA S.L.
	72481			FECHA 05-05-16	PARCELA 963-673 LA CLUMBER DEL SOL



VILLA "LA CALA"

PERSONALIZADO

SUPERIOR

GRUPO VAPF

54399



RELLENO

RESIDENCIAL JAZMINES

LA CUMBRE DEL SOL

GRUPO VAPF

CONSERVACIONES
SEGUN EL SALIDA AL EXTERIOR VENTILACIONES A ZONA DEL TECHO

EXTERIORES CONTIGUAS

PARCELA 802

PARCELA 803

TERMINADA

PLANTA

1200 00 m²

1100 00 m²

95 15 m²

100 00 m²

NUMERO PLANO

54397

FECHA

03-10-18

CLIENTE

GARDUÑA, S.L.

PARCELA

8040-2

Image not found
<https://www.cmsinmo.com/imagenes/uploads/inmu/4/6349/86348.jpg>

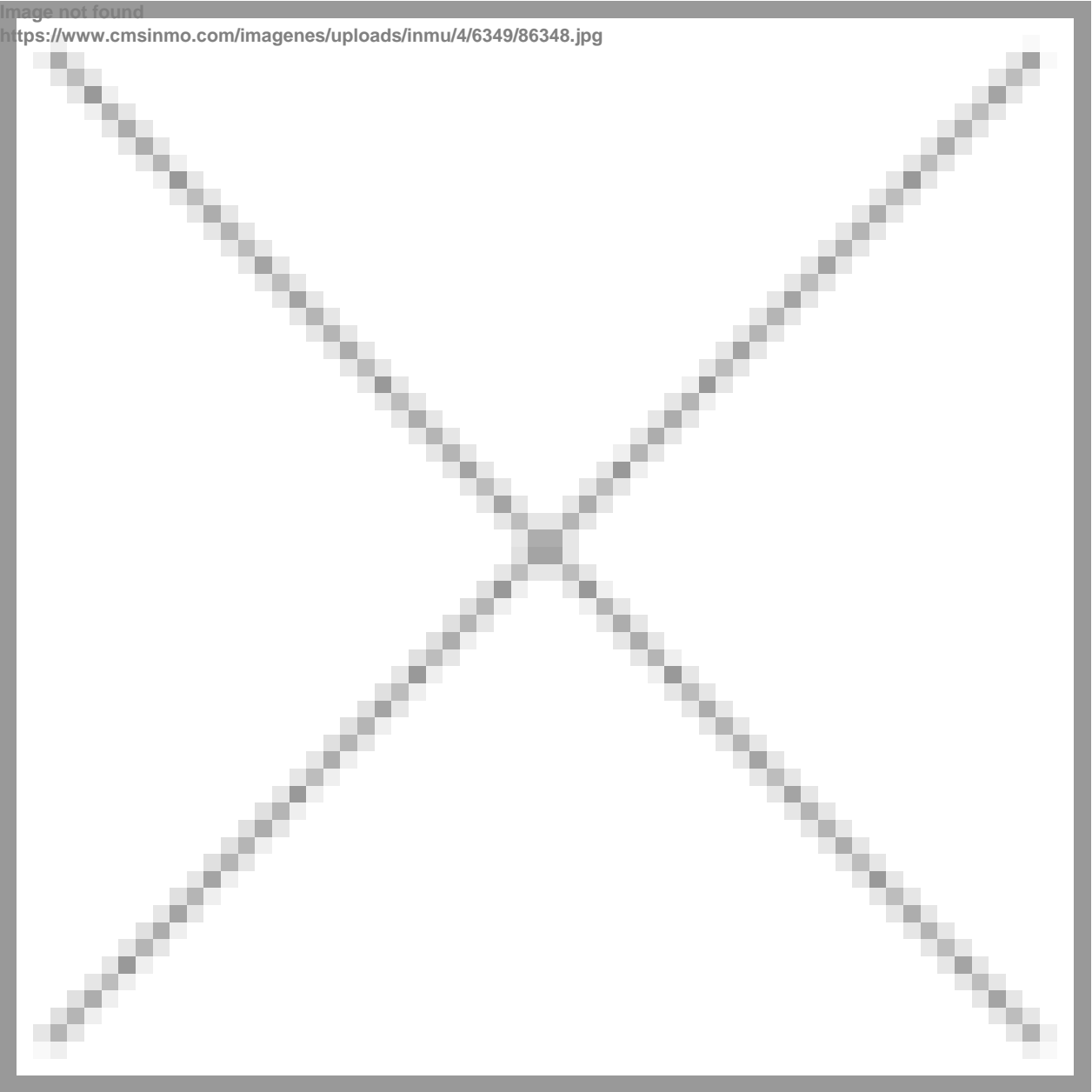


Image not found
<https://www.cmsinmo.com/imagenes/uploads/inmu/4/6349/96348.jpg>

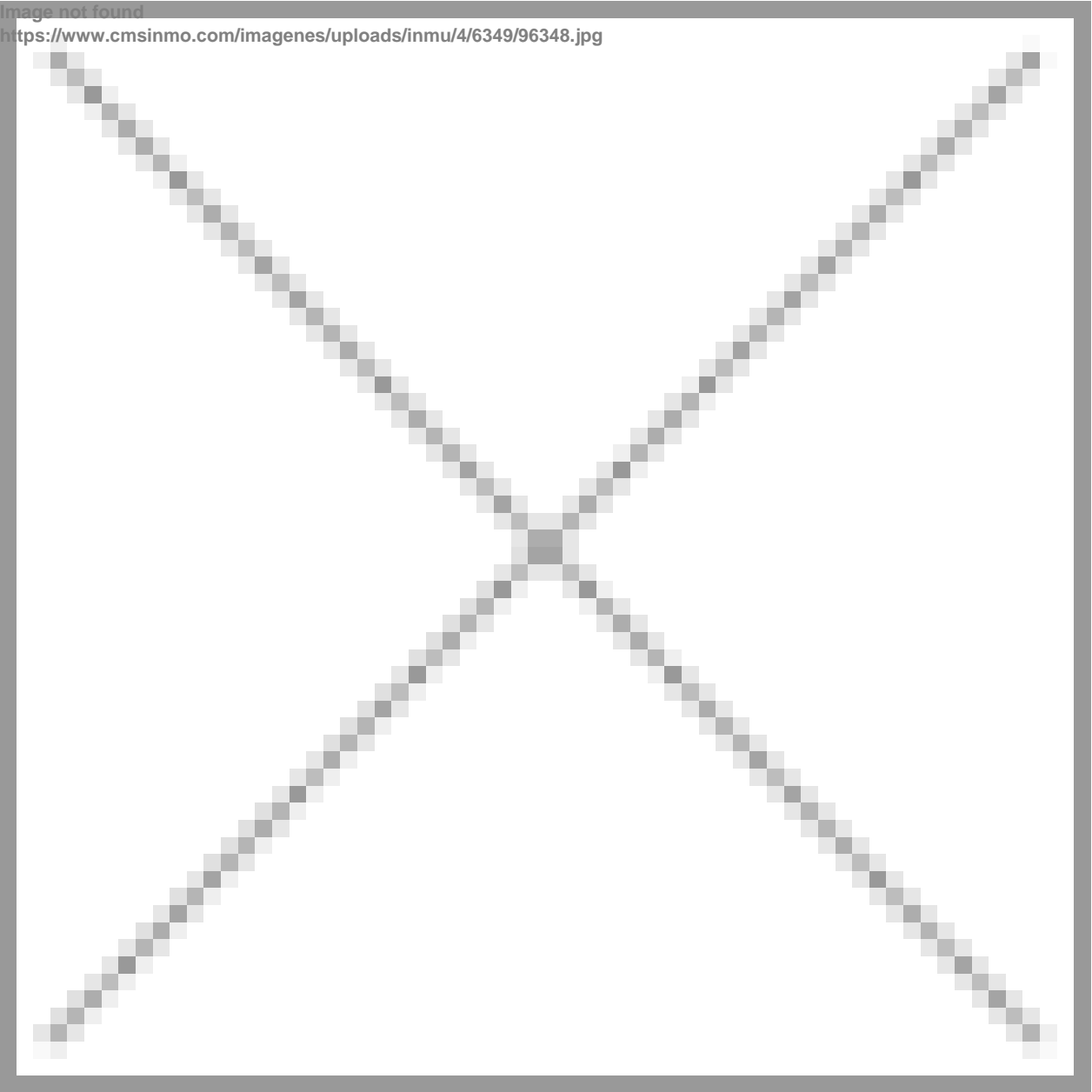


Image not found
<https://www.cmsinmo.com/imagenes/uploads/inmu/4/6349/106348.jpg>

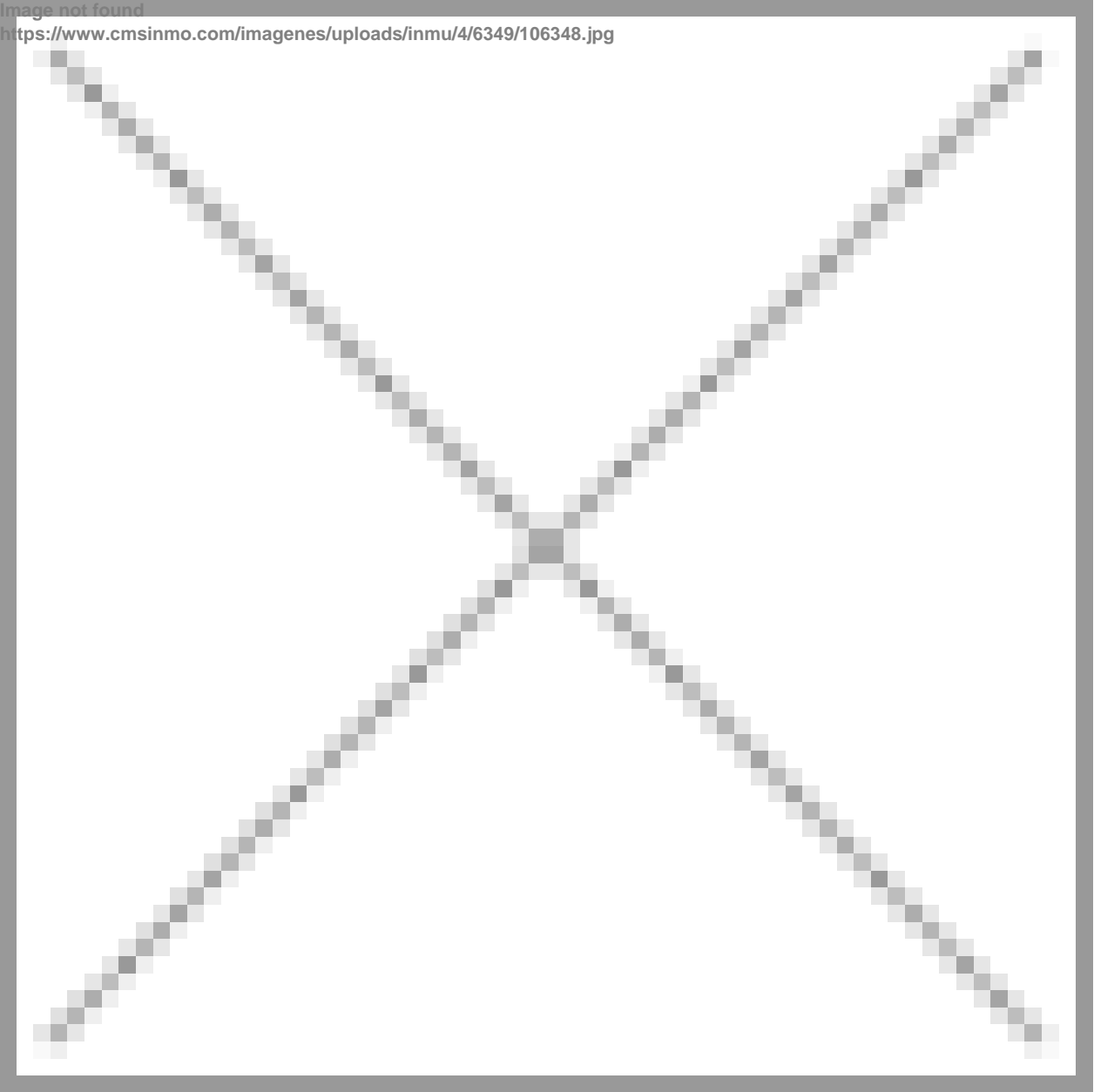


Image not found
<https://www.cmsinmo.com/imagenes/uploads/inmu/4/6349/116348.jpg>

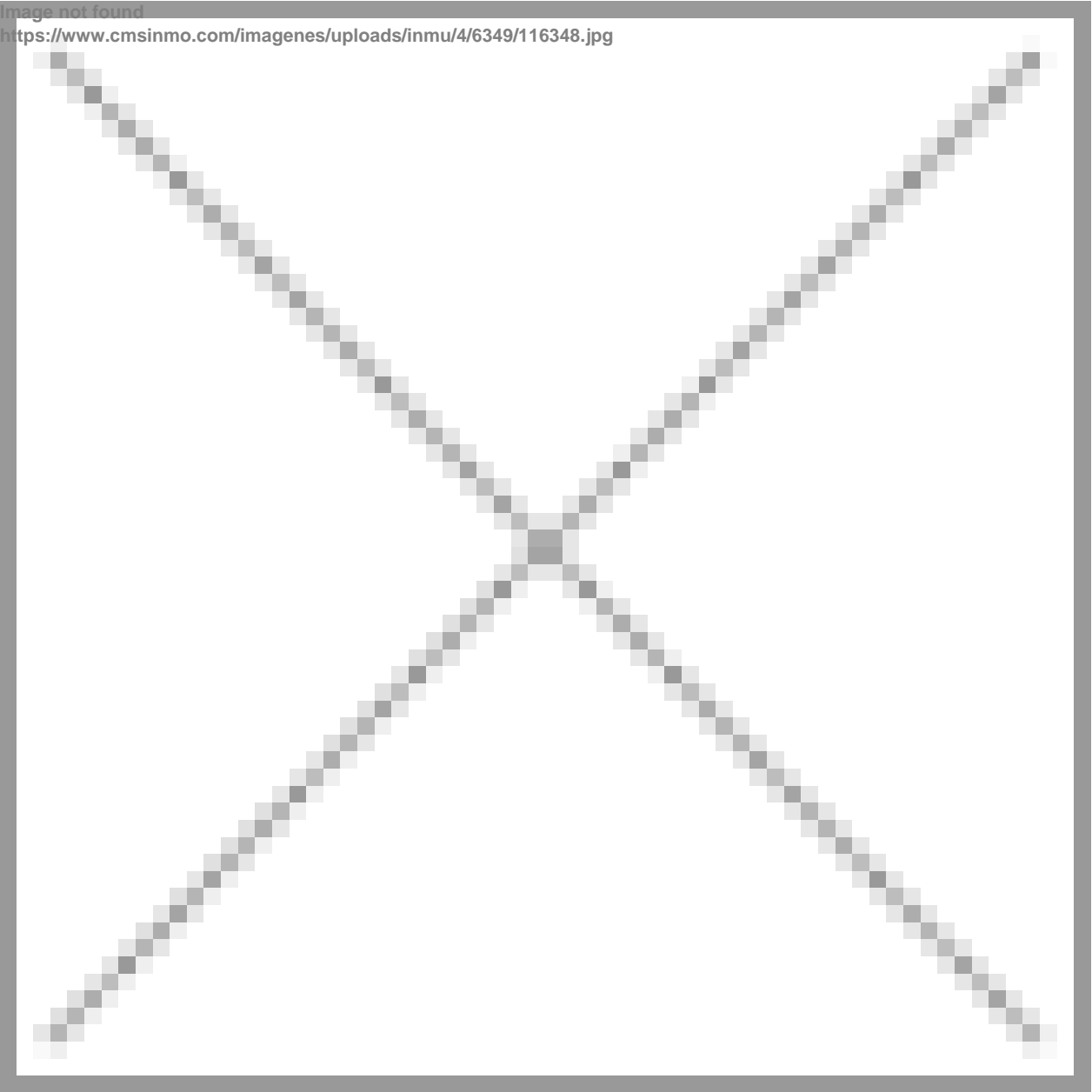


Image not found
<https://www.cmsinmo.com/imagenes/uploads/inmu/4/6349/126348.jpg>

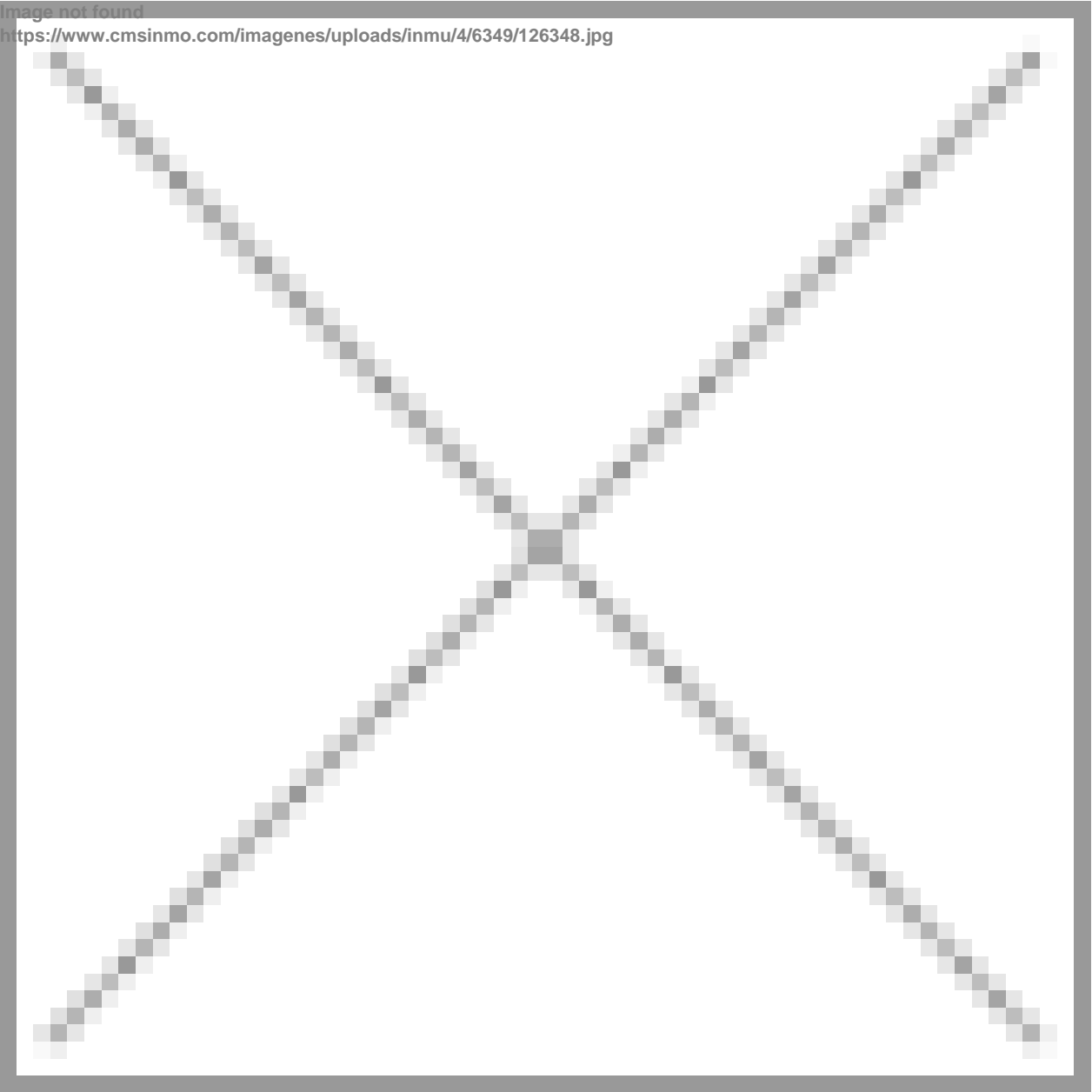


Image not found
<https://www.cmsinmo.com/imagenes/uploads/inmu/4/6349/136348.jpg>

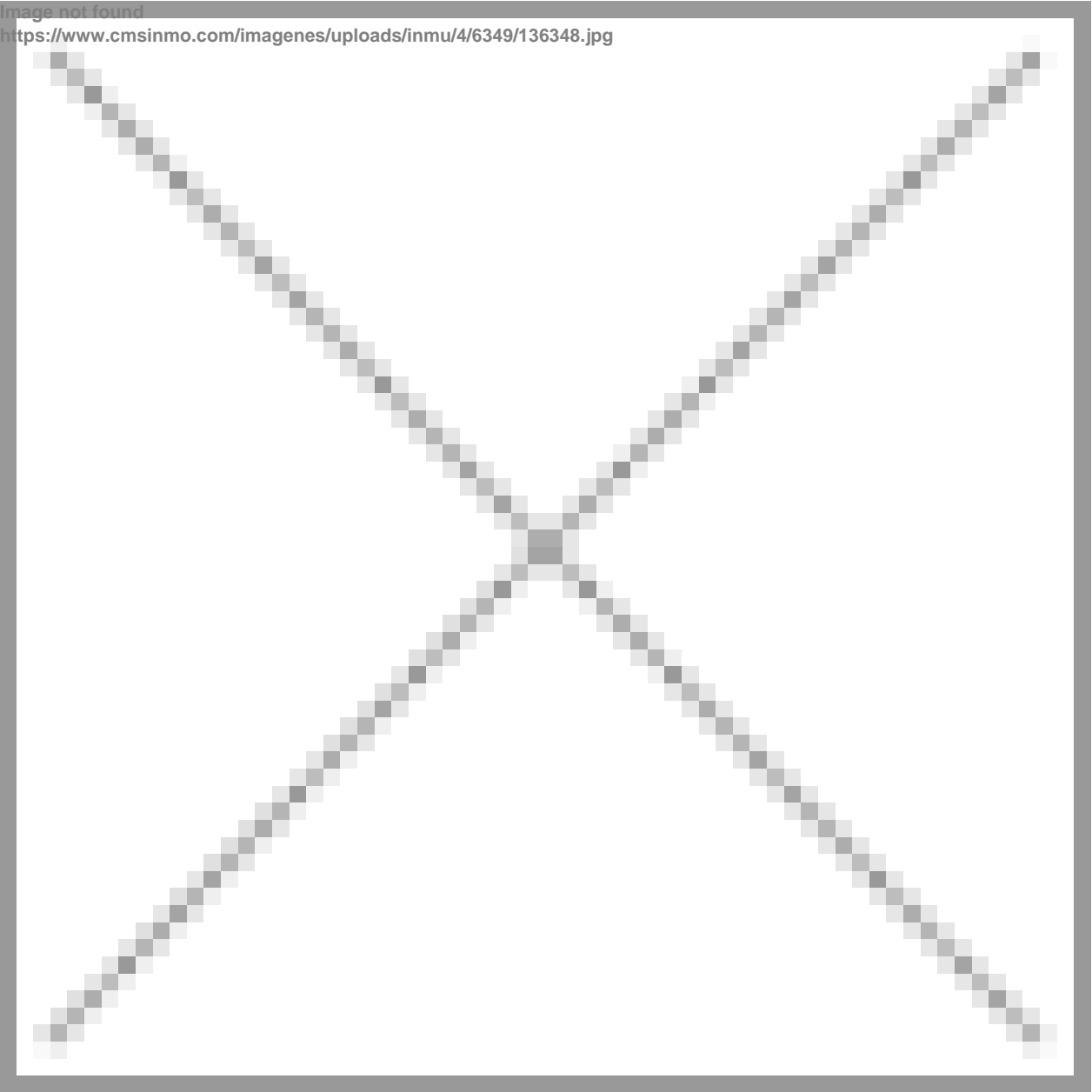


Image not found
<https://www.cmsinmo.com/imagenes/uploads/inmu/4/6349/146348.jpg>

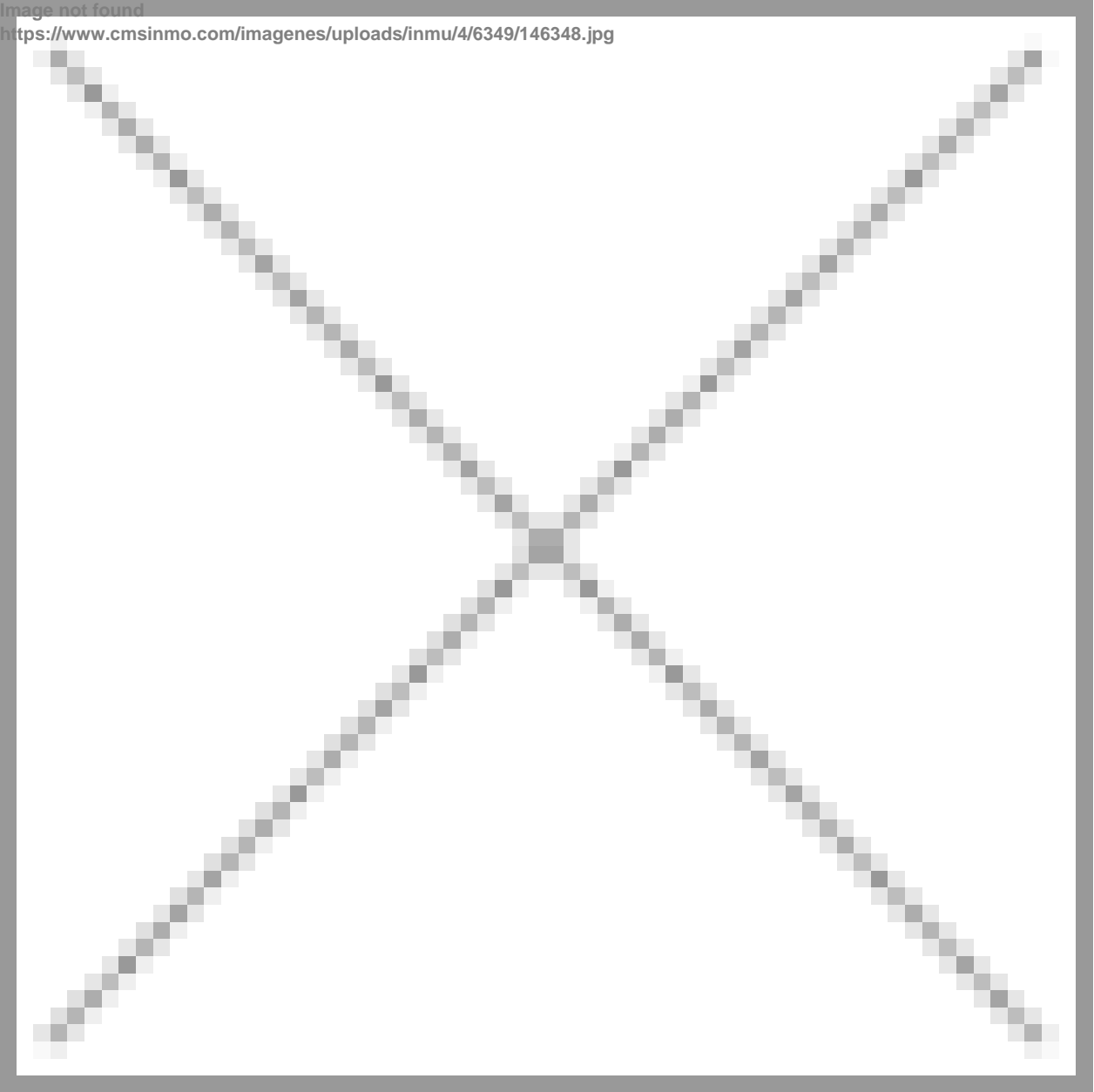


Image not found
<https://www.cmsinmo.com/imagenes/uploads/inmu/4/6349/156348.jpg>

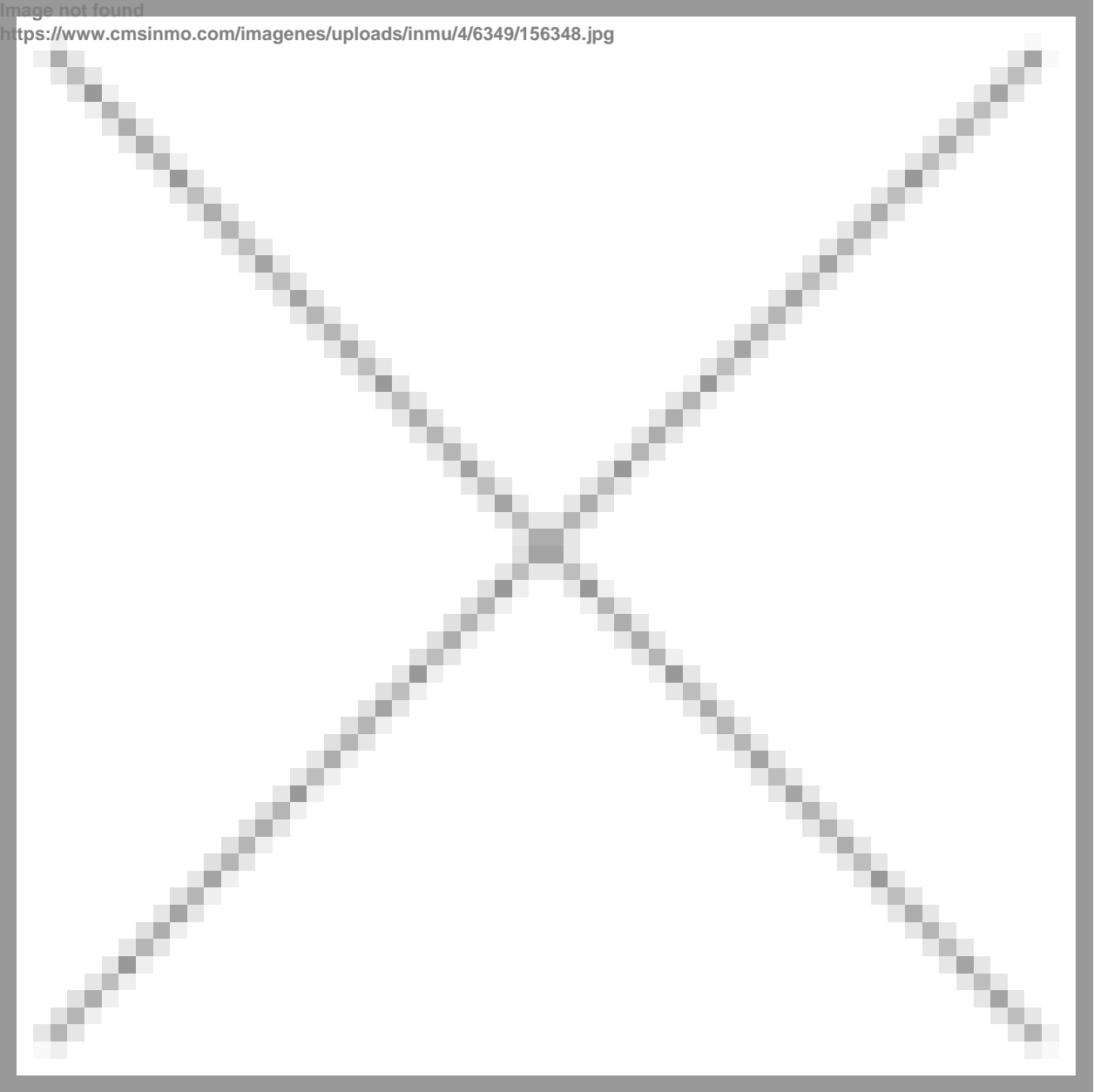


Image not found
<https://www.cmsinmo.com/imagenes/uploads/inmu/4/6349/166348.jpg>

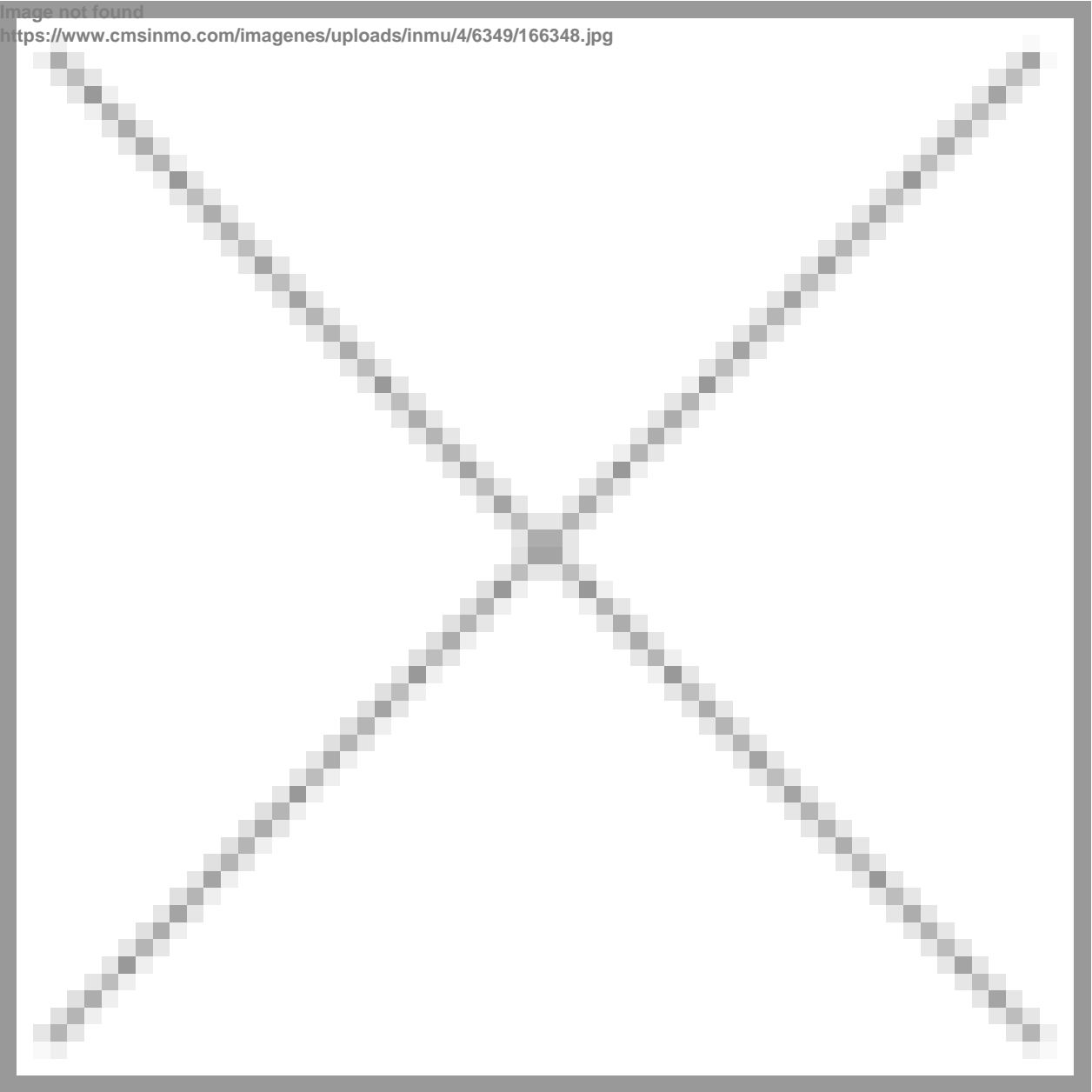


Image not found
<https://www.cmsinmo.com/imagenes/uploads/inmu/4/6349/176348.jpg>

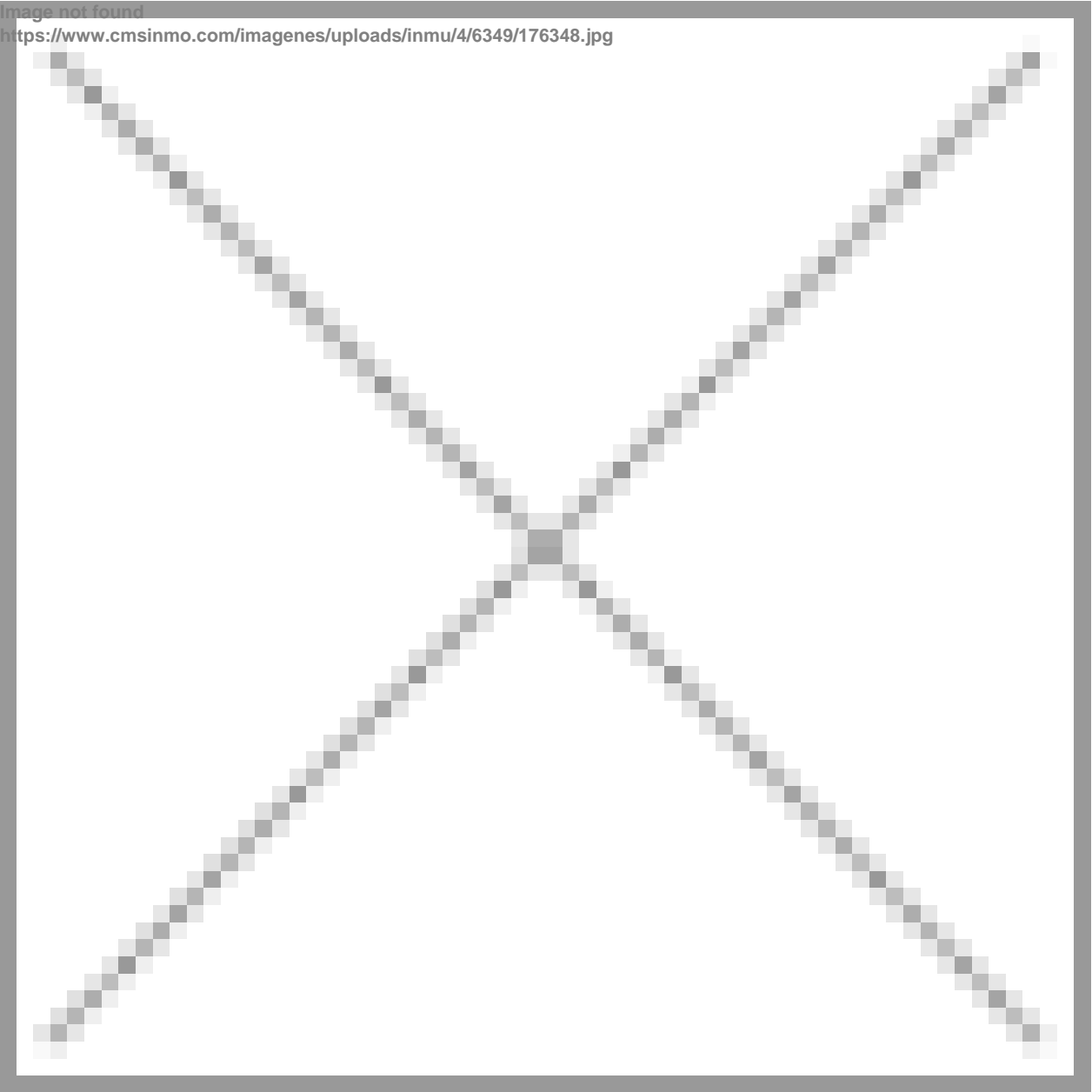


Image not found
<https://www.cmsinmo.com/imagenes/uploads/inmu/4/6349/186348.jpg>



"OUR EXPERIENCE IS YOUR GUARANTEE"