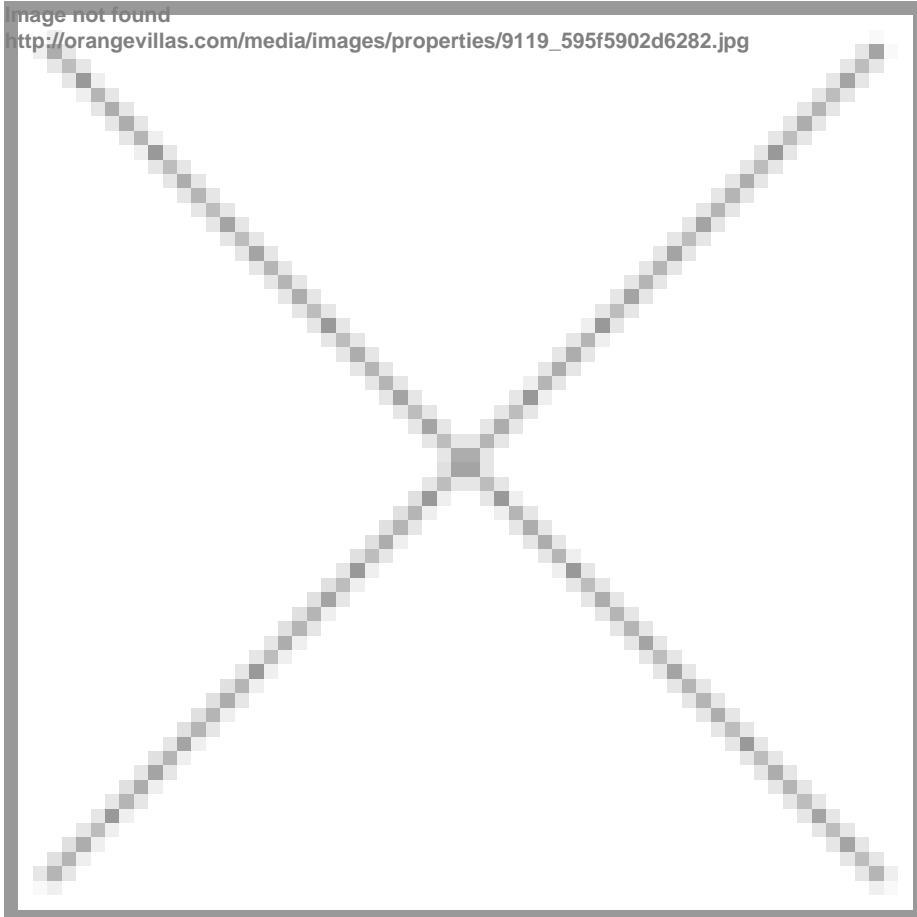




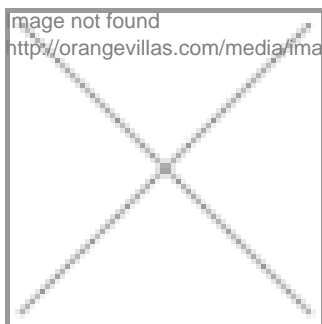
REF: # 4577

JAVEA



#### INFO

PRICE:	789.000 €
PROPERTY TYPE:	Villa
CITY:	Javea
BEDROOMS:	3
Bathrooms:	2
Build ( m2 ):	228
Plot ( m2 ):	1.000
Terrace ( m2 ):	-
Year:	-
Floor:	-
Old price	-



#### DESCRIPTION

Modern design villa, currently under construction, with good sea views. On the main floor; entry, open plan living / dining / kitchen, utility room, master bedroom with en-suite bathroom, 2 more double bedrooms, family bathroom and covered terrace. In the basement; a garage for 1 car and a store room.

#### ENERGETIC CERTIFIED



**VIEWS**

- Panoramic views
- Sea views

**PARKING**

Garage no Cars : 1

---

image not found  
[http://orangevillas.com/media/images/properties/9119\\_595f5902d6282.jpg](http://orangevillas.com/media/images/properties/9119_595f5902d6282.jpg)

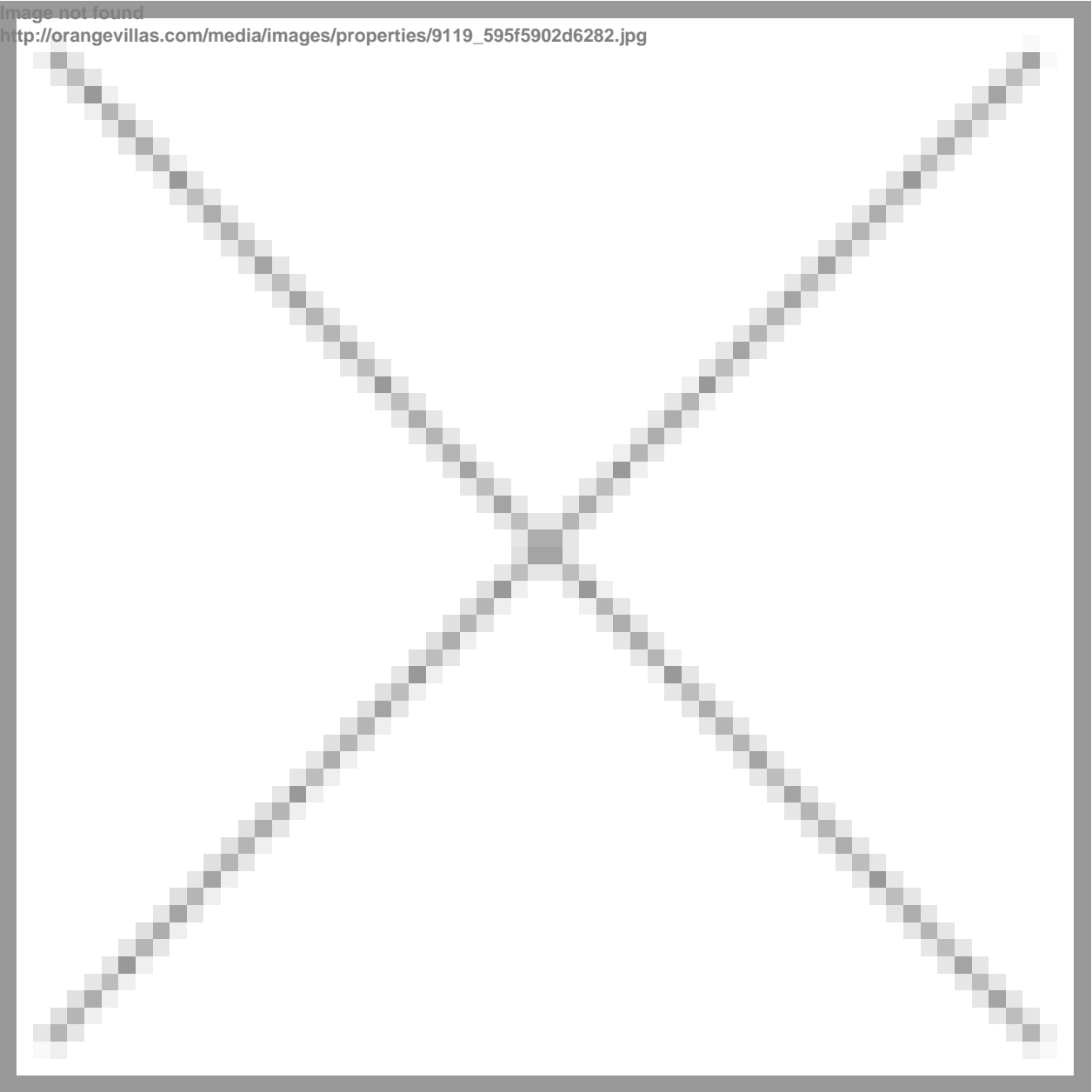


Image not found  
[http://orangevillas.com/media/images/properties/9120\\_595f5902a1b5d.jpg](http://orangevillas.com/media/images/properties/9120_595f5902a1b5d.jpg)

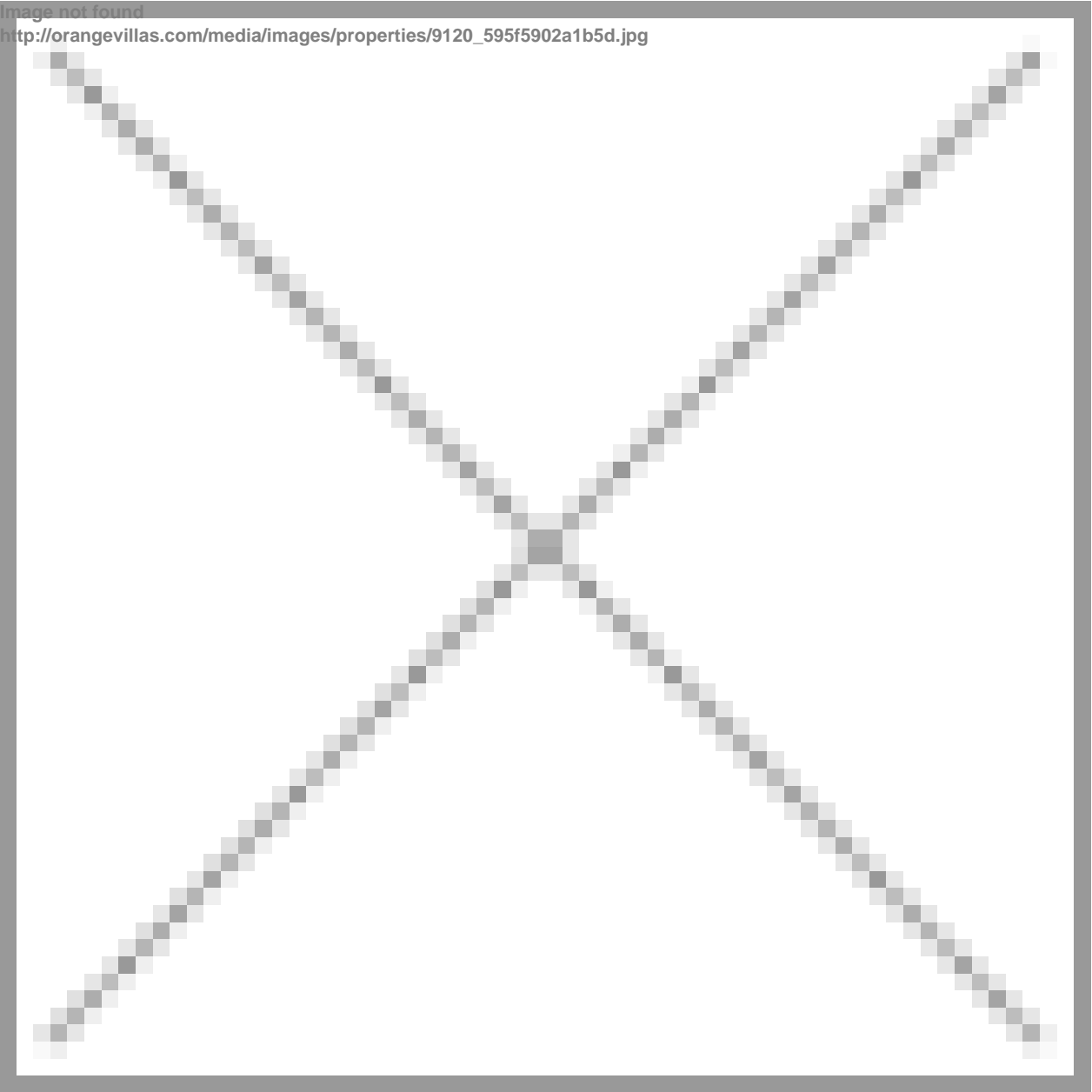


Image not found  
[http://orangevillas.com/media/images/properties/9121\\_595f59026c775.jpg](http://orangevillas.com/media/images/properties/9121_595f59026c775.jpg)

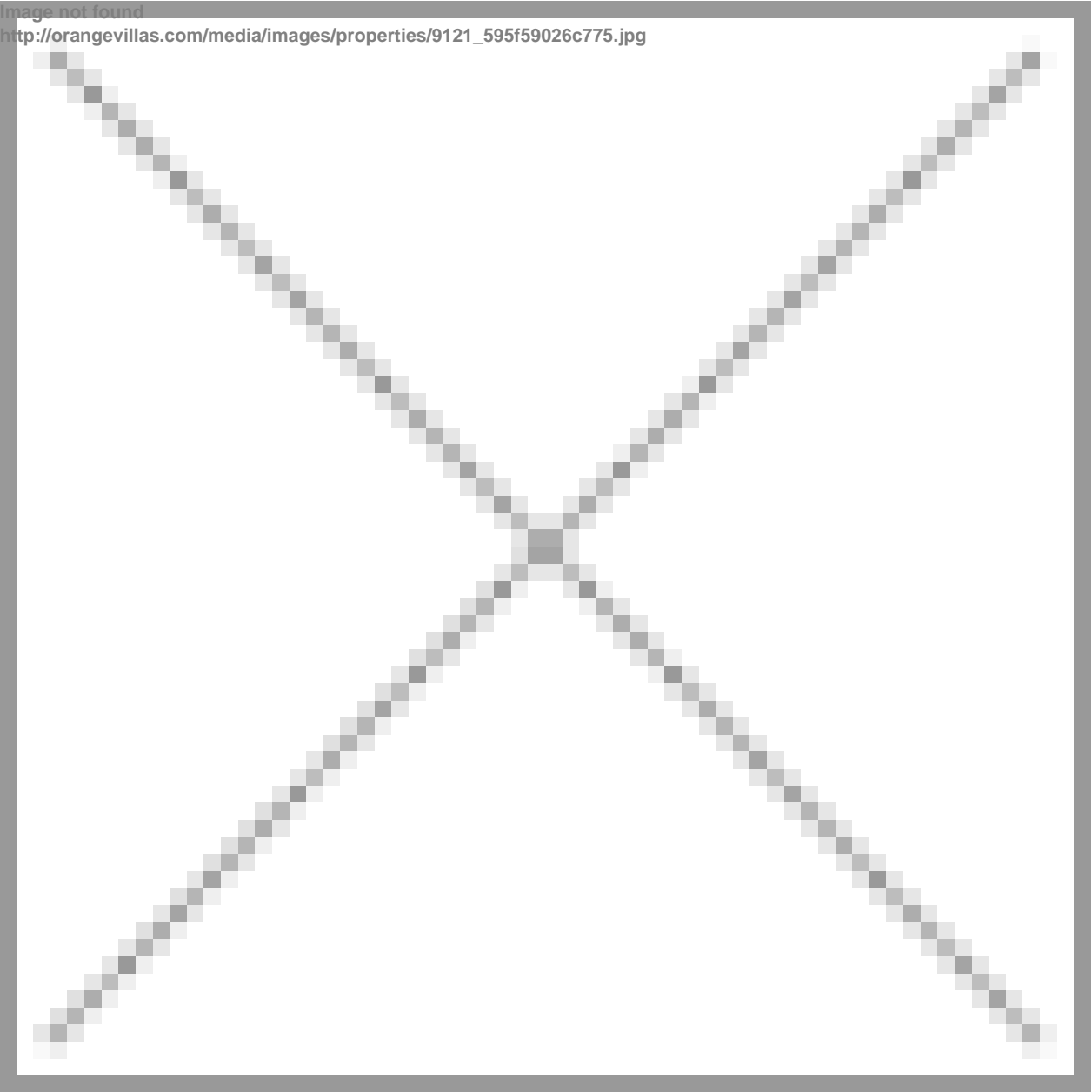
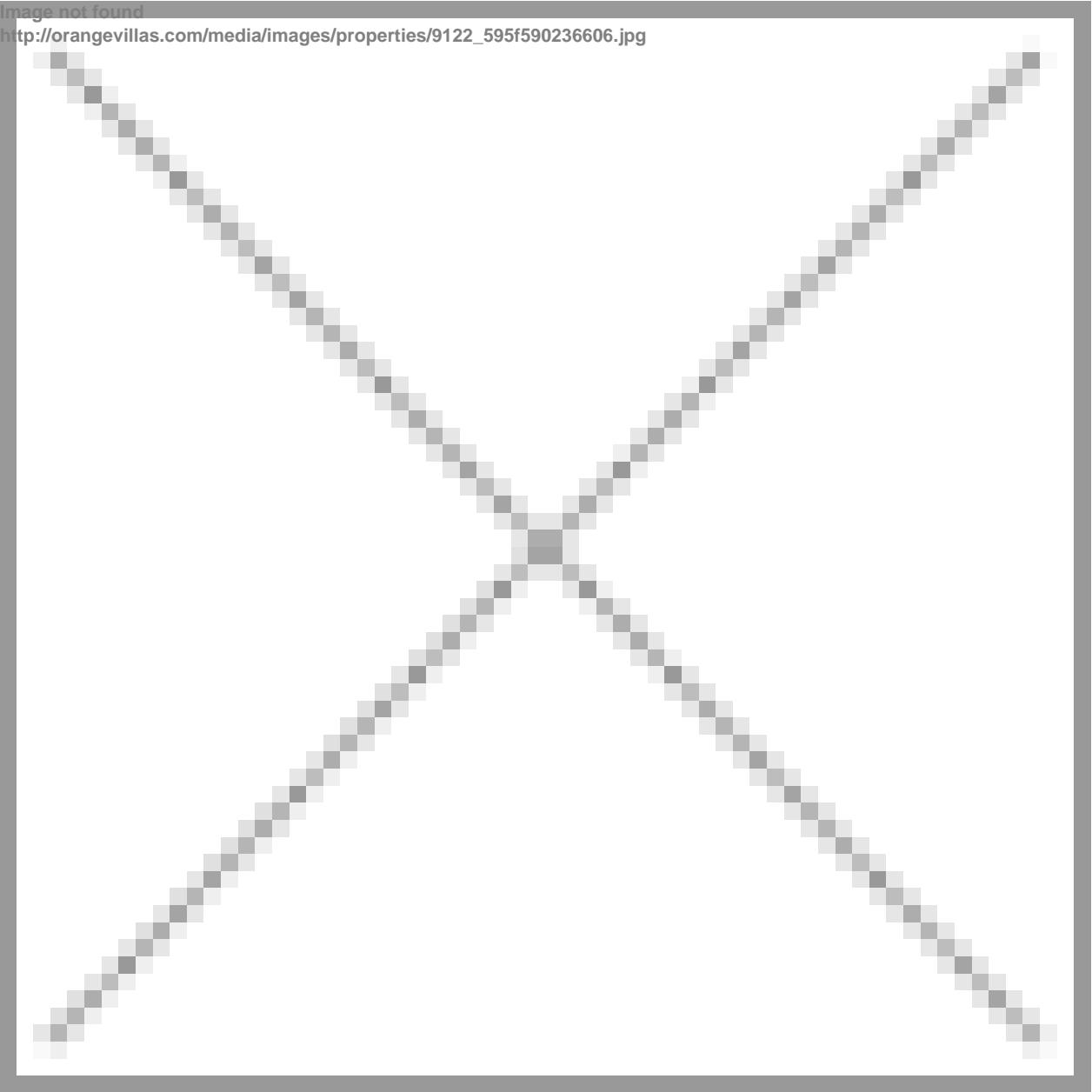
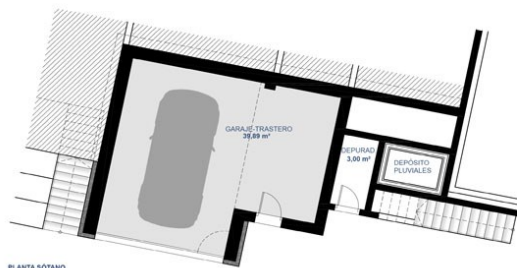


Image not found  
[http://orangevillas.com/media/images/properties/9122\\_595f590236606.jpg](http://orangevillas.com/media/images/properties/9122_595f590236606.jpg)





PLANTA BAJA



PLANTA SÓTANO

#### SUPERFICIES CONSTRUIDAS

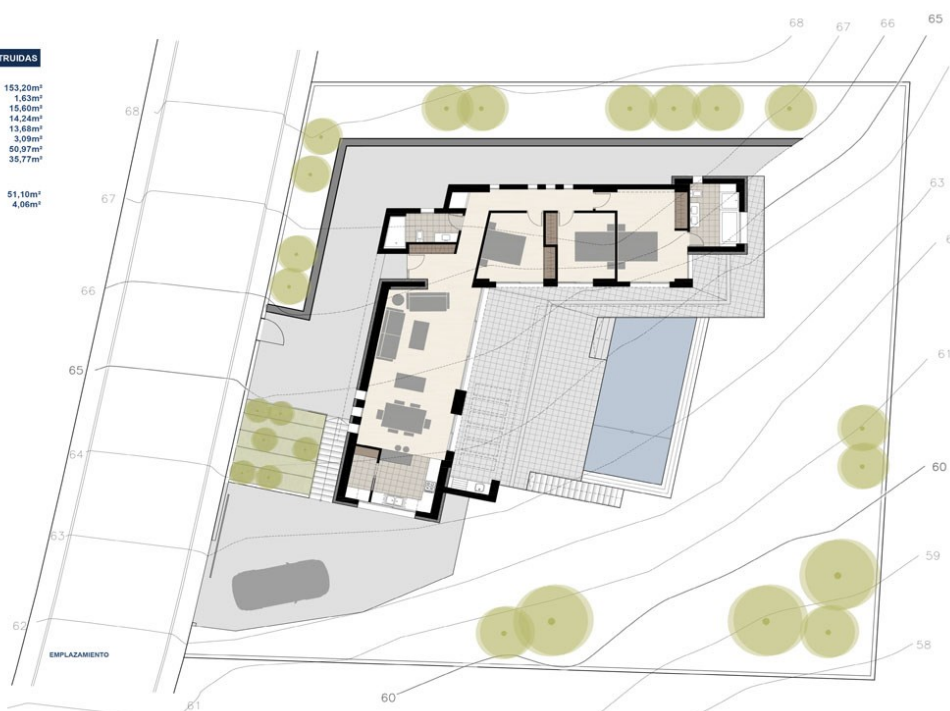
<b>PLANTA BAJA</b>	
VIVIENDA	153,20m²
PORCHE-ACCESO	1,63m²
PORCHE	15,60m²
PERGOLA	14,24m²
VOLADIZOS	13,68m²
BARBACOA	3,09m²
TERRAZA	50,97m²
PISCINA	35,77m²

<b>PLANTA SÓTANO</b>	
GARAJE-TRASTERO	51,10m²
DEPURADORA	4,06m²

#### SUPERFICIES CONSTRUIDAS

<b>PLANTA BAJA</b>	
VIVIENDA	153,20m²
PORCHE-ACCESO	1,63m²
PORCHE	15,60m²
PERGOLA	14,24m²
VOLADIZOS	13,68m²
BARBACOA	3,09m²
TERRAZA	50,97m²
PISCINA	35,77m²

<b>PLANTA SÓTANO</b>	
GARAJE-TRASTERO	51,10m²
DEPURADORA	4,06m²



"OUR EXPERIENCE IS YOUR GUARANTEE"