



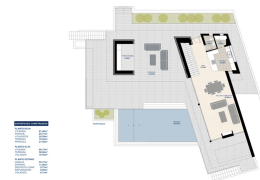
REF: # 4576

JAVEA



INFO

PRICE:	895.000 €
PROPERTY TYPE:	Villa
CITY:	Javea
BEDROOMS:	3
Bathrooms:	2
Build (m2):	305
Plot (m2):	1.000
Terrace (m2):	-
Year:	-
Floor:	-
Old price	-



DESCRIPTION

Modern design villa, currently under construction, in a prime position with sea views. On the main floor; entry, open plan living / dining / kitchen, utility room, guest toilet and spacious covered terrace. Internal stairs lead to the upper floor comprising; master bedroom with en-suite bathroom and walk-in closet, 2 more double bedrooms, family bathroom and large open terrace. In the basement a double garage and store room.

ENERGETIC CERTIFIED



VIEWS

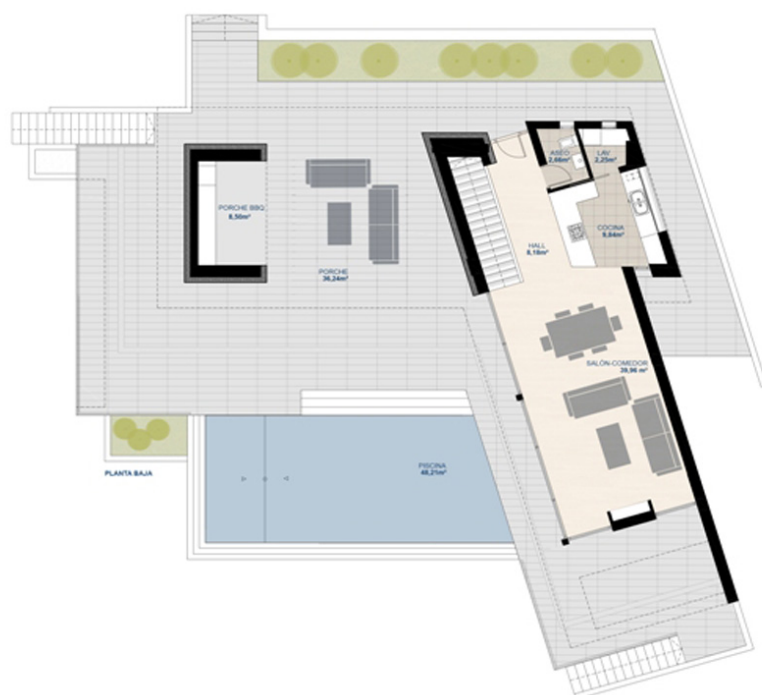
- Panoramic views
- Sea views

PARKING

Garage no Cars : 1





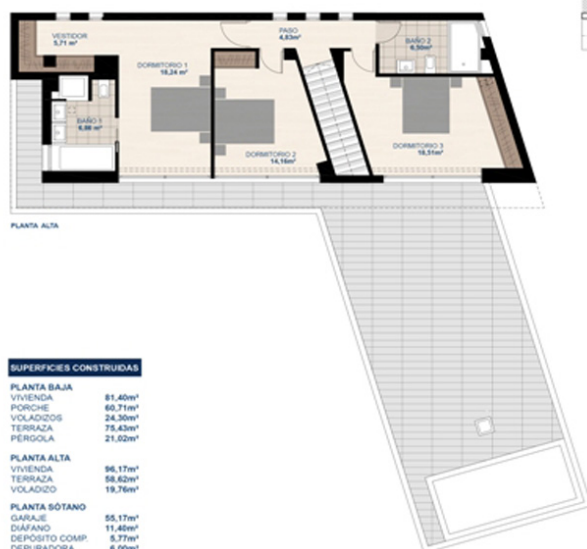


SUPERFICIES CONSTRUIDAS

PLANTA BAJA	
VIVIENDA	81.40m²
PORCHE	60.71m²
VOLADIZOS	24.50m²
TERRAZA	75.43m²
PERGOLA	21.02m²

PLANTA ALTA	
VIVIENDA	96.17m²
TERRAZA	58.62m²
VOLADIZO	19.76m²

PLANTA SÓTANO	
GARAJE	55.17m²
DIÁFANO	11.40m²
DEPÓSITO COMP.	5.77m²
DEPURADORA	6.50m²
VOLADIZO	9.11m²

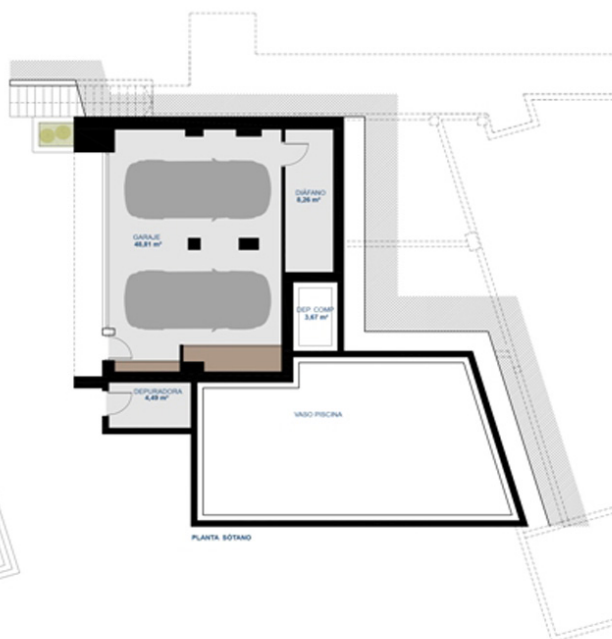


SUPERFICIES CONSTRUIDAS

PLANTA BAJA	
VIVIENDA	81.40m²
PORCHE	60.71m²
VOLADIZOS	24.50m²
TERRAZA	75.43m²
PERGOLA	21.02m²

PLANTA ALTA	
VIVIENDA	96.17m²
TERRAZA	58.62m²
VOLADIZO	19.76m²

PLANTA SÓTANO	
GARAJE	55.17m²
DIÁFANO	11.40m²
DEPÓSITO COMP.	5.77m²
DEPURADORA	6.50m²
VOLADIZO	9.11m²

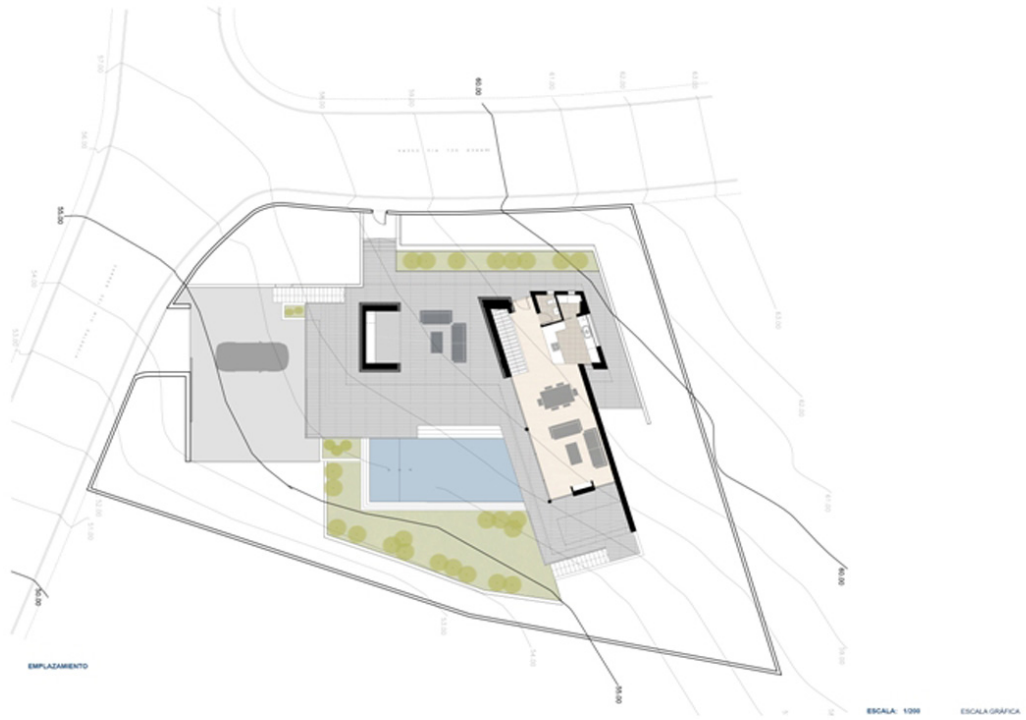


SUPERFICIES CONSTRUIDAS

PLANTA BAJA	
VIVIENDA	81.40m ²
PORCHE	60.71m ²
VOLADIZOS	24.50m ²
TERRAZA	75.43m ²
PERGOLA	21.02m ²

PLANTA ALTA	
VIVIENDA	96.17m ²
TERRAZA	58.62m ²
VOLADIZO	19.76m ²

PLANTA SÓTANO	
GARAJE	55.17m ²
DIÁFANO	11.40m ²
DEPÓSITO COMP.	5.77m ²
DEFURADORA	6.50m ²
VOLADIZO	9.11m ²



"OUR EXPERIENCE IS YOUR GUARANTEE"