



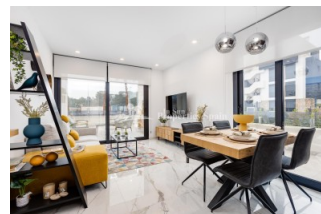
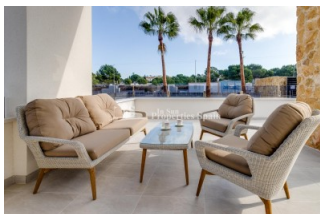
REF: # 4496

ORIHUELA COSTA (VILLAMARTIN PAU-8)



INFO

PRICE:	215.000 €
PROPERTY TYPE:	Apartment
CITY:	Orihuela Costa (Villamartin Pau-8)
BEDROOMS:	2
Bathrooms:	2
Build (m2):	75
Plot (m2):	-
Terrace (m2):	12
Year:	
Floor:	-
Old price	-



DESCRIPTION

Fully Furnished Luxury Apartments - 2 bedrooms - 2 bathrooms!
"BUILDERS SPECIAL OFFER - TILL 30/08/2022: FURNISHED, WHITE GOODS PACK, AC cold/warm, Furniture pack, Inside and outside lighting pack, Under ground Parking space, Unground Storage room, Decoration, TV, Coffemachine, Toaster, Iron, Kitchenware etc., Airtermic water heater". Residential development bordering PAU-8 Sur VILLAMARTIN and LOS ALTOS. The project comprises of 2 bedroom, 2 bathroom apartments and Penthouses with stunning views! There are lovely communal areas with large garden areas, spacious swimming pools and play areas for the children as well as underground parking spaces. There is also a Gym and Spa area. 2 bed, 2 bath from €215.000. Beautiful modern design, ideal for holiday home or the perfect property in the sun all year round. Close to all amenities, with regular bus routes to neighbouring areas including the La Zenia Boulevard shopping centre, a shopaholic's delight and Torrevieja. Torrevieja Hospital is a 10 min drive away or a short bus ride. 15 minutes drive to the beach, 40 minutes to

Alicante or Murcia Airport.



STYLE <ul style="list-style-type: none">• Modern• Contemporary	VIEWS <ul style="list-style-type: none">• Panoramic views• Sea views	AIRCONDITIONING <ul style="list-style-type: none">• Central airconditioning	DISTANCE TO : <div>Beach : 4 Km</div> <div>Airport: 50 Km</div> <div>Town center : 2 Km</div>
ORIENTATION <div>East</div>	FURNITURE <ul style="list-style-type: none">• Not furnished	PARKING <div>Garage no Cars : 1</div> <div>Parking no Cars: 1</div>	MAIN LIVING AREA <ul style="list-style-type: none">• Storage
KITCHEN <ul style="list-style-type: none">• Open kitchen• Equipped kitchen• Granite countertop	GARDEN AND TERRACES <ul style="list-style-type: none">• Covered terrace• Palm trees• Play Ground• Landscaped• Stone walls• Communal Garden	EXTRA <ul style="list-style-type: none">• Built in wardrobes• Reinforced door• Double glazed windows	

























"OUR EXPERIENCE IS YOUR GUARANTEE"