



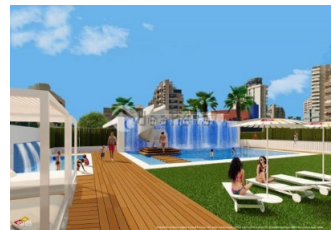
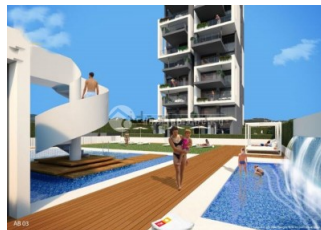
REF: # 4415

CALPE/MORAIRA (CALPE CENTRO)



INFO

PRICE:	220.000 €
PROPERTY TYPE:	Apartment
CITY:	Calpe/Moraira (Calpe centro)
BEDROOMS:	2
Bathrooms:	2
Build (m2):	103
Plot (m2):	-
Terrace (m2):	12
Year:	2018
Floor:	-
Old price	-



DESCRIPTION

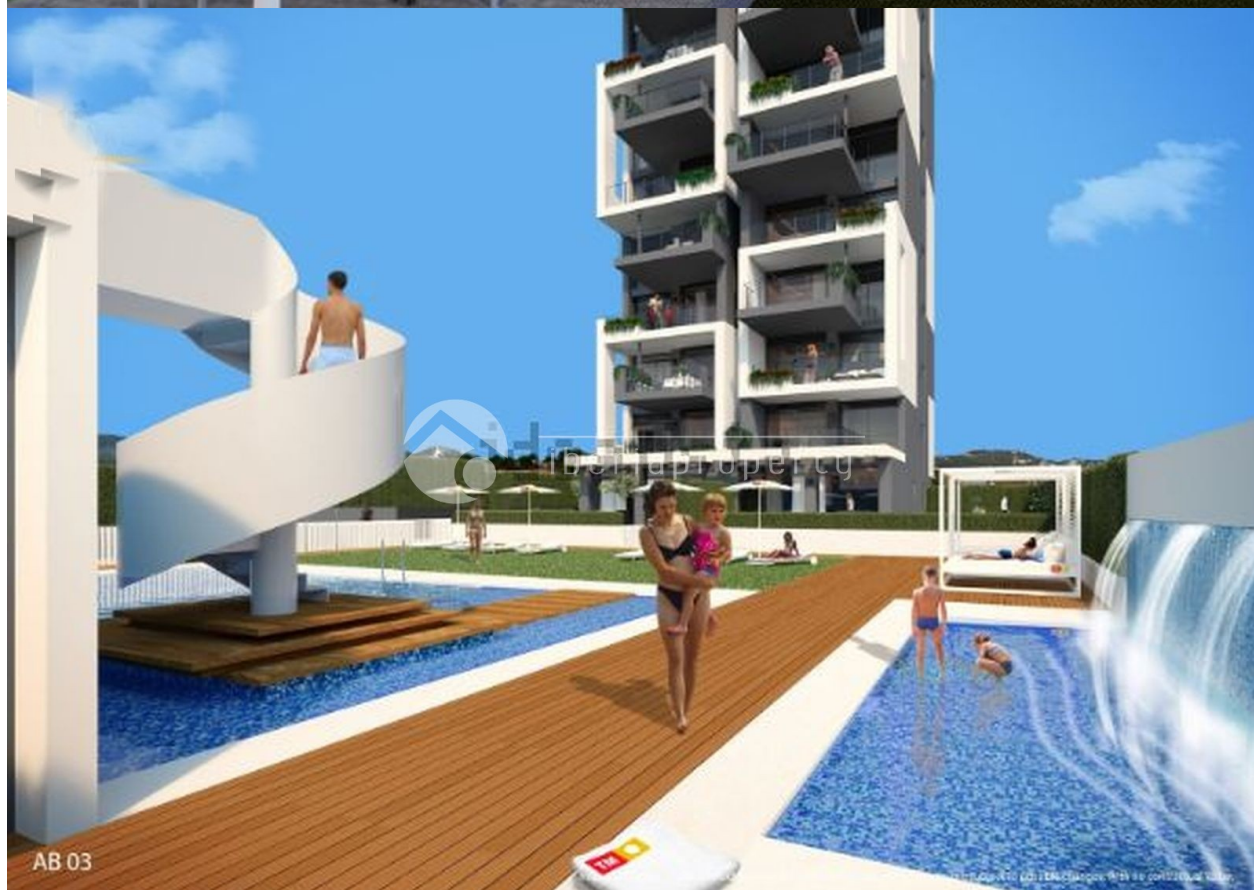
Arenal Beach a unique residential complex that boasts impressive views of the sea and Peñon de Ifach. Here you will enjoy the sunshine and fresh sea air from your large terrace. The communal areas include a swimming pool for adults and another for children, as well as a poolside garden terrace complete with Balinese sun loungers and parasols. A spiral staircase leads you up a raised solarium, complete with Jacuzzi and lounge chairs, from which a water wall joins the swimming pool below creating a waterfall. Arenal Beach is in a privileged location in Calpe, an enchanting town where you can enjoy the authentic Mediterranean lifestyle and the chance to explore over 13 kilometers of coastline with stunning beaches and coves. The great majority of the homes have sea views. Depending on the height of the property you can also enjoy views of the swimming pools, the sea and Peñon de Ifach. Two bedroom apartments with large terraces from which you can enjoy the fresh air of the Mediterranean sea. Among its outstanding features are duct-type hold/cold air conditioning and underfloor heating in the

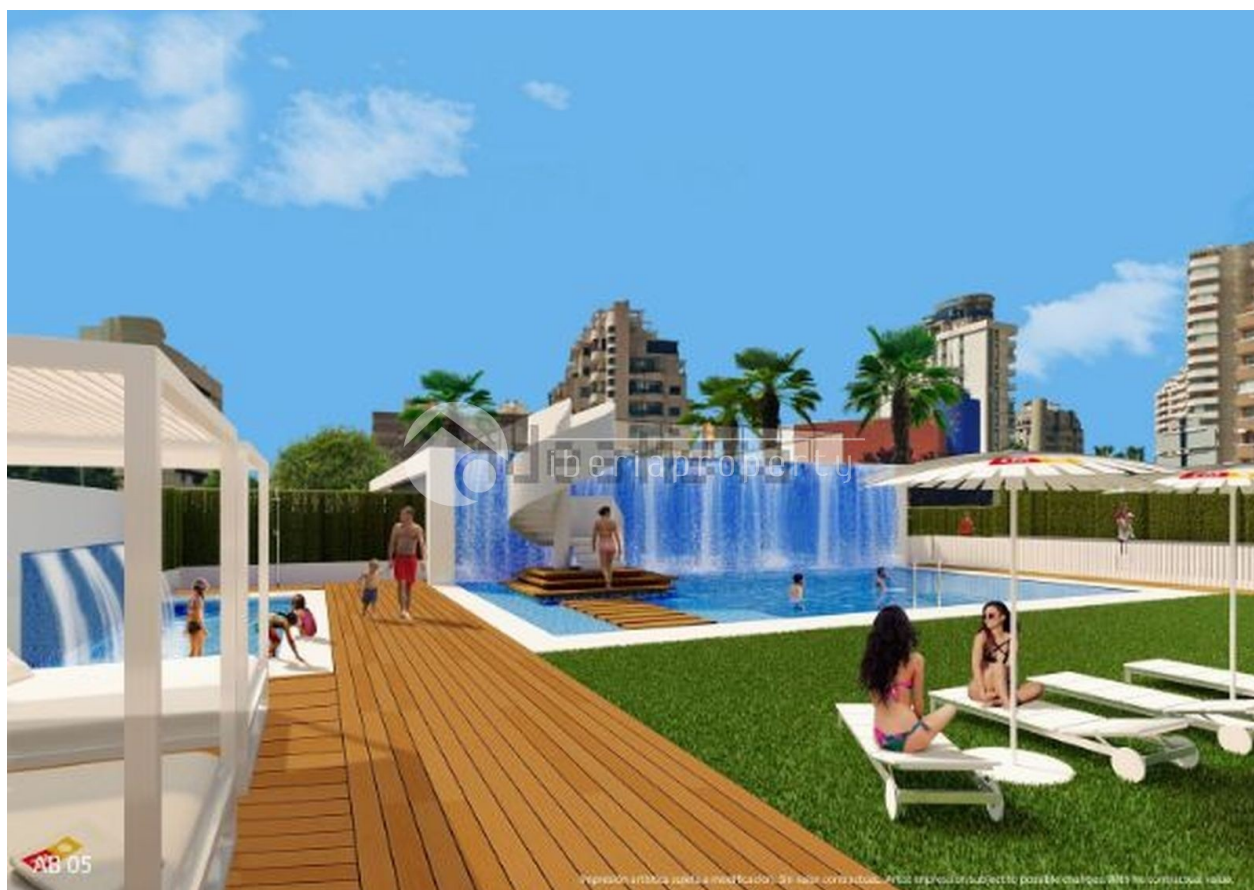
bathrooms. TM Real Estate Group gives you the possibility to personalise your home with a choice between a range of finishes, at no extra cost. So that you can start enjoying your home from day one, we give you the option to purchase it fully furnished with a choice of two furniture styles: Aktual or LGance. We will also arrange the water and electricity supply contracts for you. Each apartment comes included with a basement or outdoor parking space. The vibrant seafront promenade facing the residence offers a vast selection of services, including restaurants, cafes and ice cream shops. Calpe is a town bursting with Valencian culture, reflected in the Mudejar-Gothic architecture of its monuments, such as the church known as “Iglesia Vieja”, the castle and the archaeological site of the Medieval Town of Ifac. Within the vicinity of Arenal Beach you can also find schools, supermarkets, pharmacies and banks, among other local services. The Ifach Golf Club and Altea Golf Club are located just 20 minutes away by car from Arenal Beach. Both are strategically located between the sea and mountains, in natural surroundings of exceptional beauty."

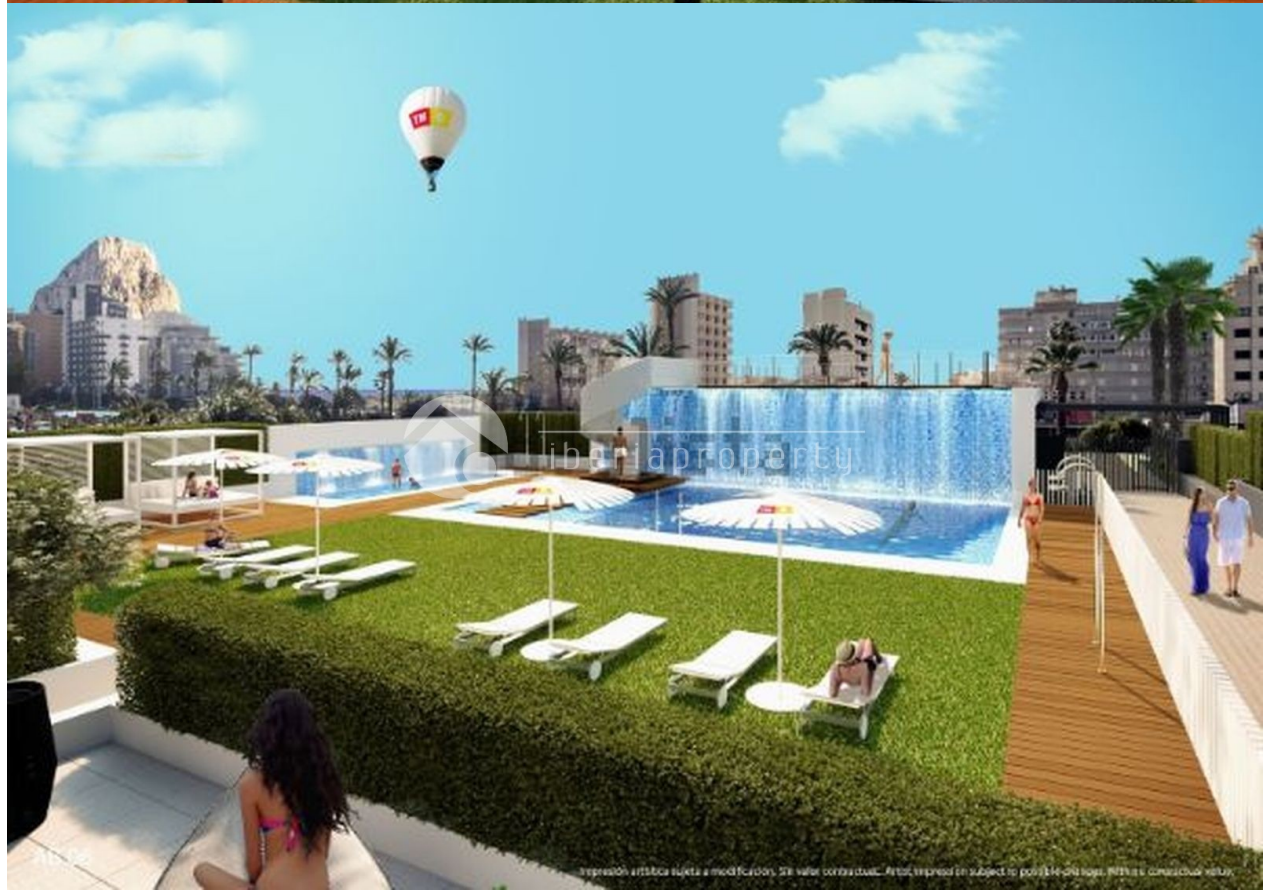


STYLE <ul style="list-style-type: none">• Modern	AIRCONDITIONING <ul style="list-style-type: none">• Central airconditioning	DISTANCE TO : <div>Beach : 200 m</div> <div>Airport: 60 Km</div> <div>Town center : 500 m</div>	ORIENTATION <div>South</div>
PARKING <div>Garage no Cars : 1</div> <div>Parking no Cars: 1</div>	MAIN LIVING AREA <ul style="list-style-type: none">• Bathroom en-suite	FLOORING <ul style="list-style-type: none">• Tile floors	KITCHEN <ul style="list-style-type: none">• Open kitchen• Equipped kitchen
GARDEN AND TERRACES <ul style="list-style-type: none">• Open terrace• Communal Garden	EXTRA <ul style="list-style-type: none">• Reinforced door• Double glazed windows• Satellite TV• Storage room• Laundry room• Lift• Internet		









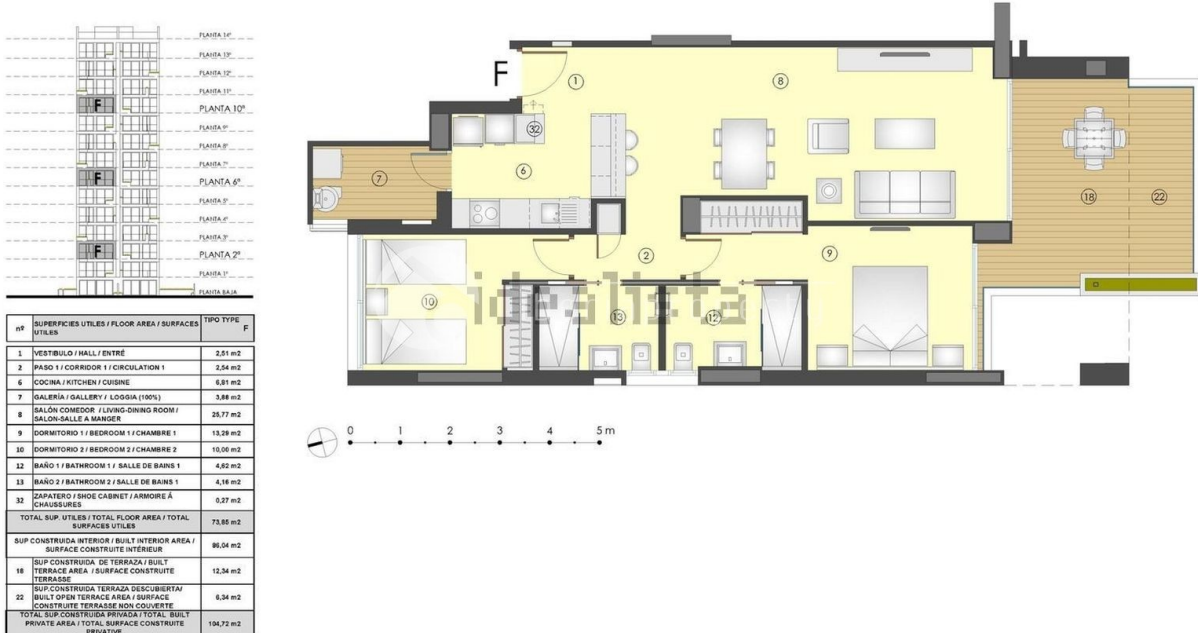


TIPO/TYPE B BLOQUE/BLOCK/BÂTIMENT 1

Apartamento 2 Dormitorios+1 Baño-Planta baja
 Appartement 2 Chambres+1 Salle de bain-Rez de chaussée
 Logement 2 Chambres+1 Salle de bain-Rez de chaussée

FEBRERO / FEBRUARY / FÉVRIER 2017

Plano sujeto a posibles modificaciones por razones o exigencias de índole técnica o jurídica. Las superficies son aproximadas. Cocina y amueblamiento orientativo, sin valor contractual.
 Plans subject to possible modifications for technical or legal reasons. Measurements shown are approximate. Kitchen and furnishings are for display purposes only, with no contractual value.
 Plan soumis à modifications en fonction des besoins ou exigences d'ordre technique ou juridique. Les surfaces sont approximatives. Cuisine et aménagement indicatifs, sans valeur contractuelle.

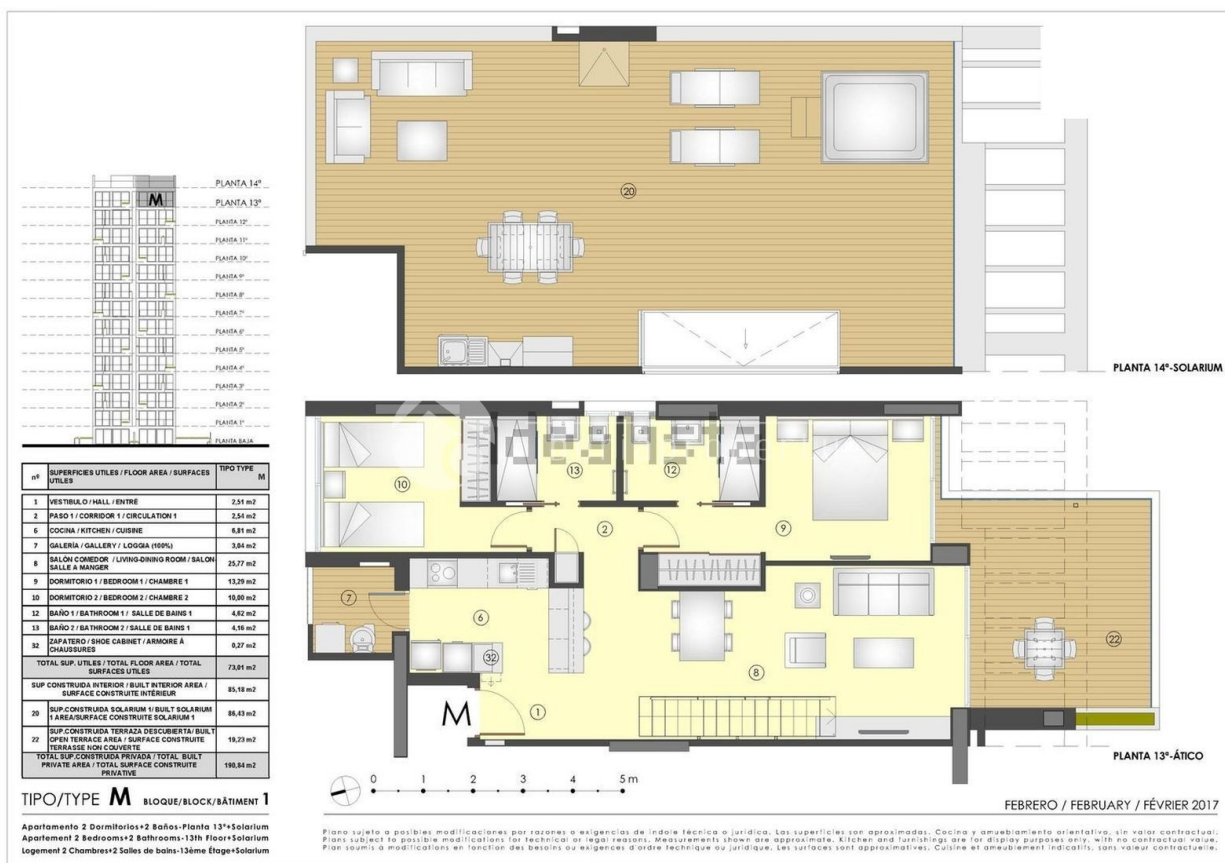
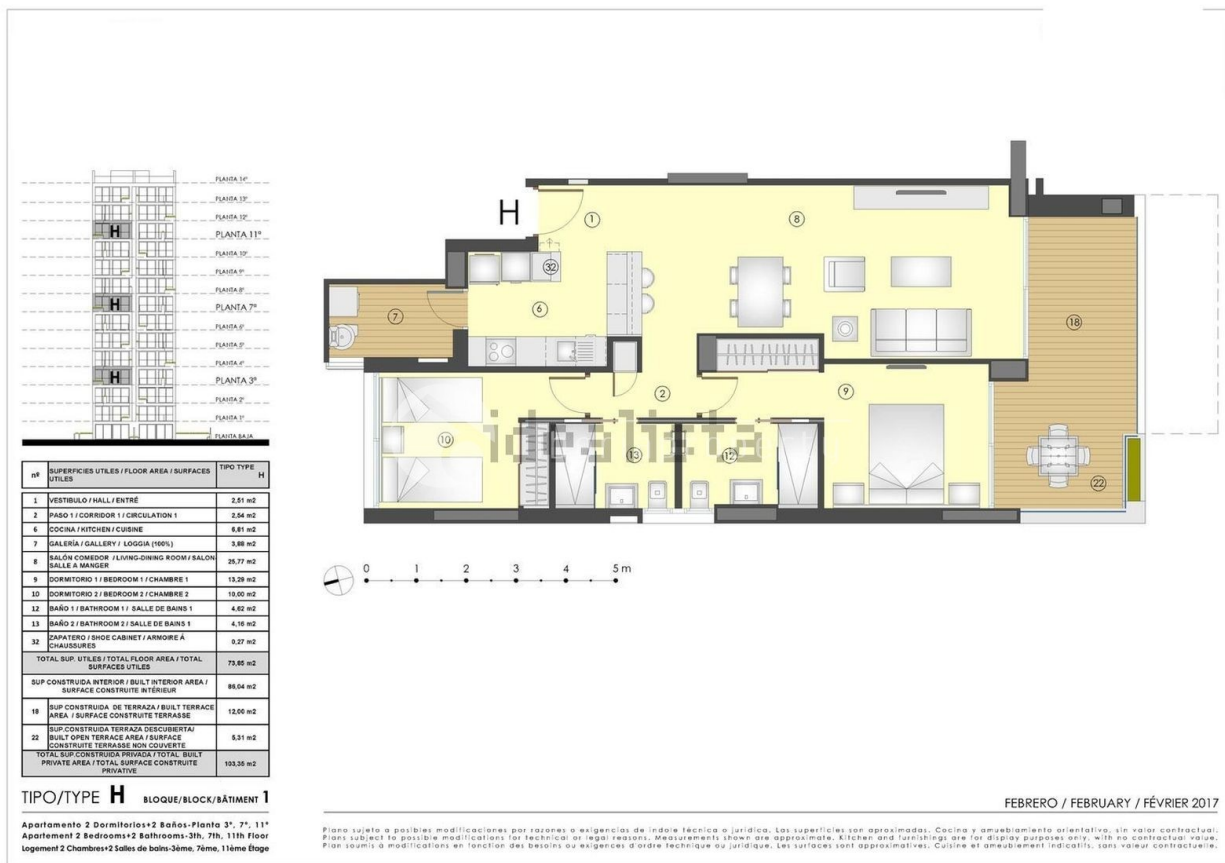


TIPO/TYPE F BLOQUE/BLOCK/BÂTIMENT 1

Apartamento 2 Dormitorios+2 Baños-Planta 2ª, 4ª, 10ª
 Apartment 2 Bedrooms+2 Bathrooms-2nd, 4th, 10th floor
 Logement 2 Chambres+2 Salles de bain-2ème, 4ème, 10ème Boge

FEBRERO / FEBRUARY / FÉVRIER 2017

Plano sujeto a posibles modificaciones por razones o exigencias de índole técnica o jurídica. Las superficies son aproximadas. Cocina y amueblamiento orientativo, sin valor contractual.
 Plans subject to possible modifications for technical or legal reasons. Measurements shown are approximate. Kitchen and furnishings are for display purposes only, with no contractual value.
 Plan soumis à modifications en fonction des besoins ou exigences d'ordre technique ou juridique. Les surfaces sont approximatives. Cuisine et aménagement indicatifs, sans valeur contractuelle.



"OUR EXPERIENCE IS YOUR GUARANTEE"