



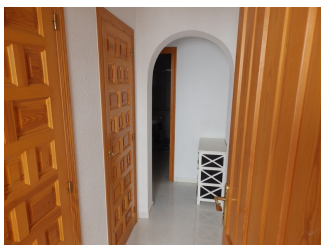
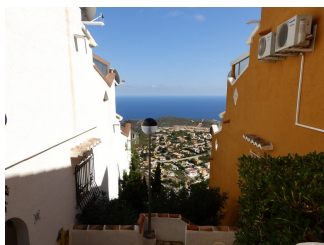
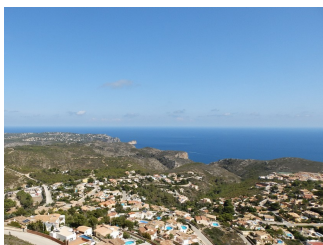
REF: # 4032

CALPE/MORAIRA (BENITACHELL)



INFO

PRICE:	124.950 €
PROPERTY TYPE:	Apartment
CITY:	Calpe/Moraira (Benitachell)
BEDROOMS:	2
Bathrooms:	1
Build (m2):	90
Plot (m2):	-
Terrace (m2):	-
Year:	-
Floor:	-
Old price	-



DESCRIPTION

This 2 bedroom, 1 bathroom apartment is accessed via a few steps down from the dedicated parking area. From the entrance corridor, which has two built in storage cabinets, you reach the open plan fitted kitchen and living/dining area. Off this room are the two double bedrooms and bathroom. The living room has patio doors which open onto the large terrace with ample space for sunbathing, dining, barbecues, etc, not to mention the amazing 180 degree view over the Mediterranean sea. This apartment also enjoys the use of two different community pools as well as having its own large, separate storeroom under the building. A short drive from both the coastal towns of Moraira and Javea and the inland villages of the Jalon Valley, this is an ideal spot to spend the long summers, or even to live all year round. Also great rental potential.

ENERGETIC CERTIFIED



HEATING

- Central gas heating

PROPERTY GALLERY











"OUR EXPERIENCE IS YOUR GUARANTEE"