



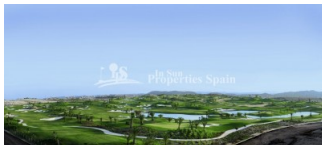
REF: # 3939

ORIHUELA COSTA (VISTABELLA GOLF COURSE)



INFO

PRICE:	209.900 €
PROPERTY TYPE:	Villa
CITY:	Orihuela Costa (Vistabella Golf Course)
BEDROOMS:	3
Bathrooms:	2
Build (m2):	150
Plot (m2):	250
Terrace (m2):	26
Year:	2017
Floor:	-
Old price	-



DESCRIPTION

NEW build modern design luxury south/west facing 3 bedroom, 2 bathroom Detached Villa "BALI - A" Contemporary style is located in "VISTABELLA GOLF RESORT " between Orihuela Costa and Orihuela Town which is considered one of the best courses in the Costa Blanca South and only 10 minutes away from the lovely beaches of ORIHUELA COSTA. The complex is formed by 9 detached villas and 12 semi detached villas with 1 bedrooms and 1 bathrooms, open living /dining area with American style kitchen on the ground floor, 2 bedroom with built-in wardrobes, 1 bathroom and balconys on the first floor ,south/ west facing with an independent plot from 215m2 to 250m2 with option to build one private 3x5m2 pool, spacious garden and private parking space. Close to Clubhouse, restaurants, bars and supermarket.

ENERGETIC CERTIFIED



STYLE	VIEWS	AIRCONDITIONING	DISTANCE TO :
<ul style="list-style-type: none">• Modern• Contemporary	<ul style="list-style-type: none">• Panoramic views• Mountain views	<ul style="list-style-type: none">• Central airconditioning	Beach : 8 Km
			Airport: 40 Km
			Town center : 500 m
ORIENTATION	FURNITURE	PARKING	MAIN LIVING AREA
South west	<ul style="list-style-type: none">• Not furnished	Parking no Cars: 1	<ul style="list-style-type: none">• Bathroom en-suite
FLOORING	KITCHEN	GARDEN AND TERRACES	EXTRA
<ul style="list-style-type: none">• Tile floors	<ul style="list-style-type: none">• Open kitchen• Equipped kitchen• Granite countertop	<ul style="list-style-type: none">• Covered terrace• Open terrace• Fenced• Stone walls• Private garden	<ul style="list-style-type: none">• Built in wardrobes• Reinforced door• Double glazed windows• Storage room







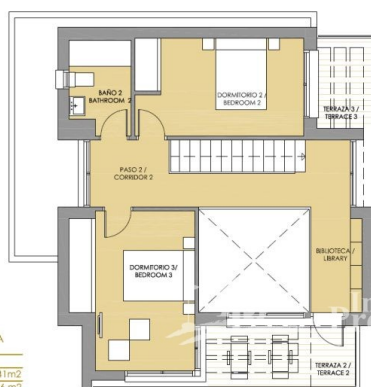












TOP FLOOR

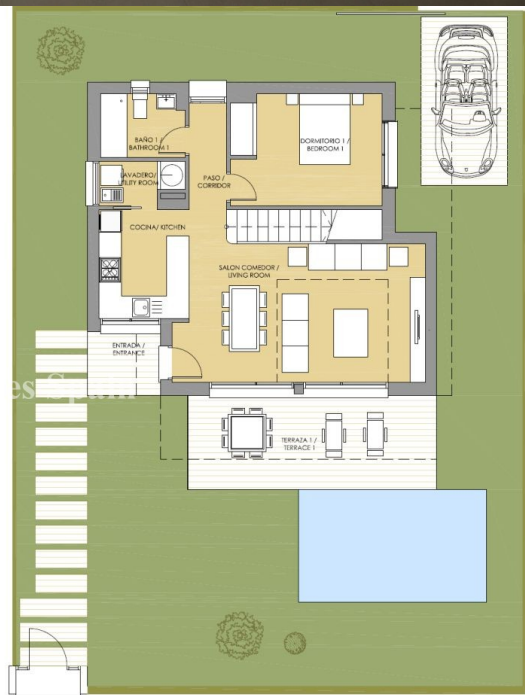
MODEL A

SUPERFICIES ÚTILES / OCCUPIABLE AREA

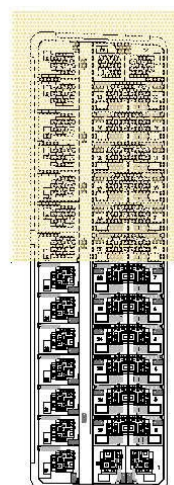
ENTRADA / ENTRANCE	3.41 m ²
SALON-COCINA / LIVING ROOM-KITCHEN	32.16 m ²
LAVADERO / UTILITY ROOM	2.42 m ²
ESCALERAS / STAIRS	3.78 m ²
DORMITORIO 1 / BEDROOM 1	11.90 m ²
BAÑO 1 / BATHROOM 1	3.88 m ²
PASO 1 / CORRIDOR 1	2.56 m ²
DORMITORIO 2 / BEDROOM 2	11.63 m ²
BAÑO 2 / BATHROOM 2	3.89 m ²
DORMITORIO 3 / BEDROOM 3	13.01 m ²
PASO 2 / CORRIDOR 2	9.24 m ²
BIBLIOTECA / LIBRARY	3.69 m ²
TERRAZA 1 / TERRACE 1	16.61 m ²
TERRAZA 2 / TERRACE 2	6.37 m ²
TERRAZA 3 / TERRACE 3	3.52 m ²

SUPERFICIE CONSTRUIDA / BUILT AREA

SUP. CONSTRUIDA / BUILT AREA	123.53 m ²
BUILT AREA + TERRACES	150.03 m ²
PARCELA / TOTAL PLOT	250.00 m ²



GROUND FLOOR





"OUR EXPERIENCE IS YOUR GUARANTEE"