



REF: # 3931

COSTA MURCIA



INFO

PRICE:	146.900 €
PROPERTY TYPE:	Apartment
CITY:	Costa Murcia
BEDROOMS:	2
Bathrooms:	2
Build (m2):	69
Plot (m2):	-
Terrace (m2):	80 + 11
Year:	2017
Floor:	-
Old price	-



DESCRIPTION

Fantastic beautiful apartments only 700 meters from the sandy beach of San Pedro del Pinatar and very short distance to several shops and restaurants. This is one of the best deals for a holiday in Spain. The apartment consists of 2 bedrooms and 2 bathrooms. Large and open living room with ultramodern kitchen. Several terraces. Private Terrace throughout 80m.2 Walking distance to everything. You can choose whether you want apartment in first floor with a huge patio or apartment on the second floor with roof terrace. Finished installing the outdoor kitchen either in the garden of the apartments on the ground floor or on the roof terrace. It is only used building materials in very high quality. Security door, double windows very well insulated. IT'S HARD TO BEAT THIS PRICE.

ENERGETIC CERTIFIED

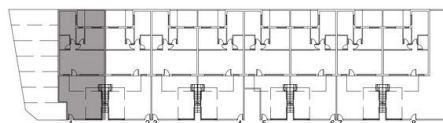


STYLE <ul style="list-style-type: none">• Modern	AIRCONDITIONING <ul style="list-style-type: none">• Central airconditioning	DISTANCE TO : <div>Beach : 500 m</div> <div>Airport: 20 Km</div> <div>Town center : 200 m</div>	ORIENTATION <div>South</div>
FURNITURE <ul style="list-style-type: none">• Not furnished	PARKING <div>Garage no Cars : 1</div> <div>Parking no Cars: 1</div>	FLOORING <ul style="list-style-type: none">• Tile floors	KITCHEN <ul style="list-style-type: none">• Open kitchen• Equipped kitchen
GARDEN AND TERRACES <ul style="list-style-type: none">• Covered terrace• Open terrace• Exterior lights• Automatic watering system• Palm trees• Landscaped• Stone walls• Electric gate• BBQ/grill• Communal Garden	HEATING <ul style="list-style-type: none">• Central electric heating	EXTRA <ul style="list-style-type: none">• Built in wardrobes• Reinforced door• Double glazed windows• Satellite TV• Internet	

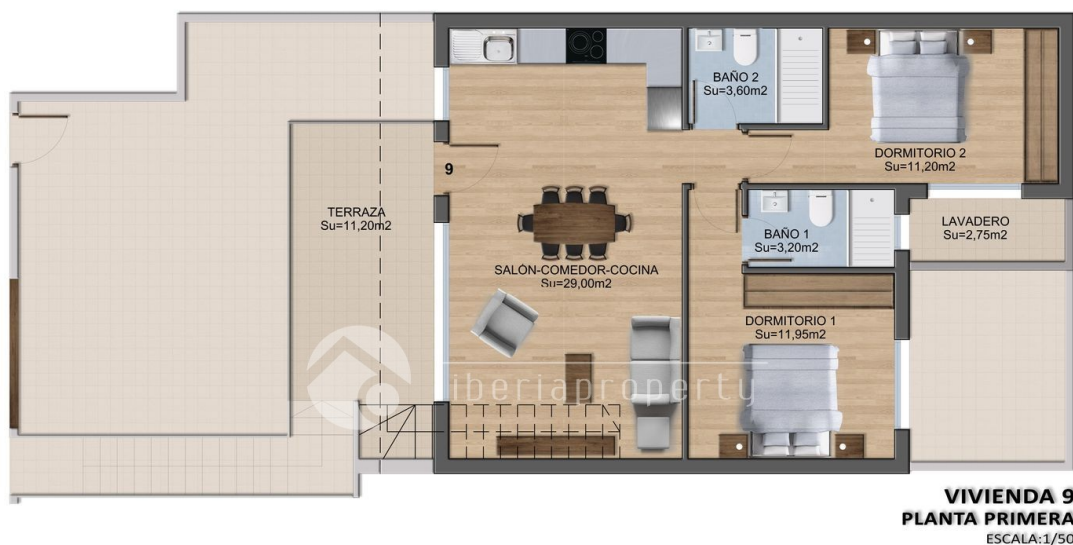




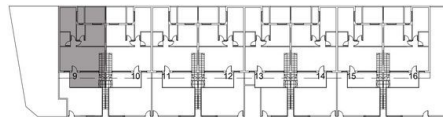
Vivienda 1 Planta.		Uso.	S. Útil.	S. Const.
Tipo PLANTA BAJA	Baja.	Vivienda.	58.95 m ²	69.74 m²
		Jardín.	46.00 m ²	46.00 m²
		Patio.	11.45 m ²	11.45 m²
		Total m².	116.40 m²	127.19 m²



PLAYAMAR II



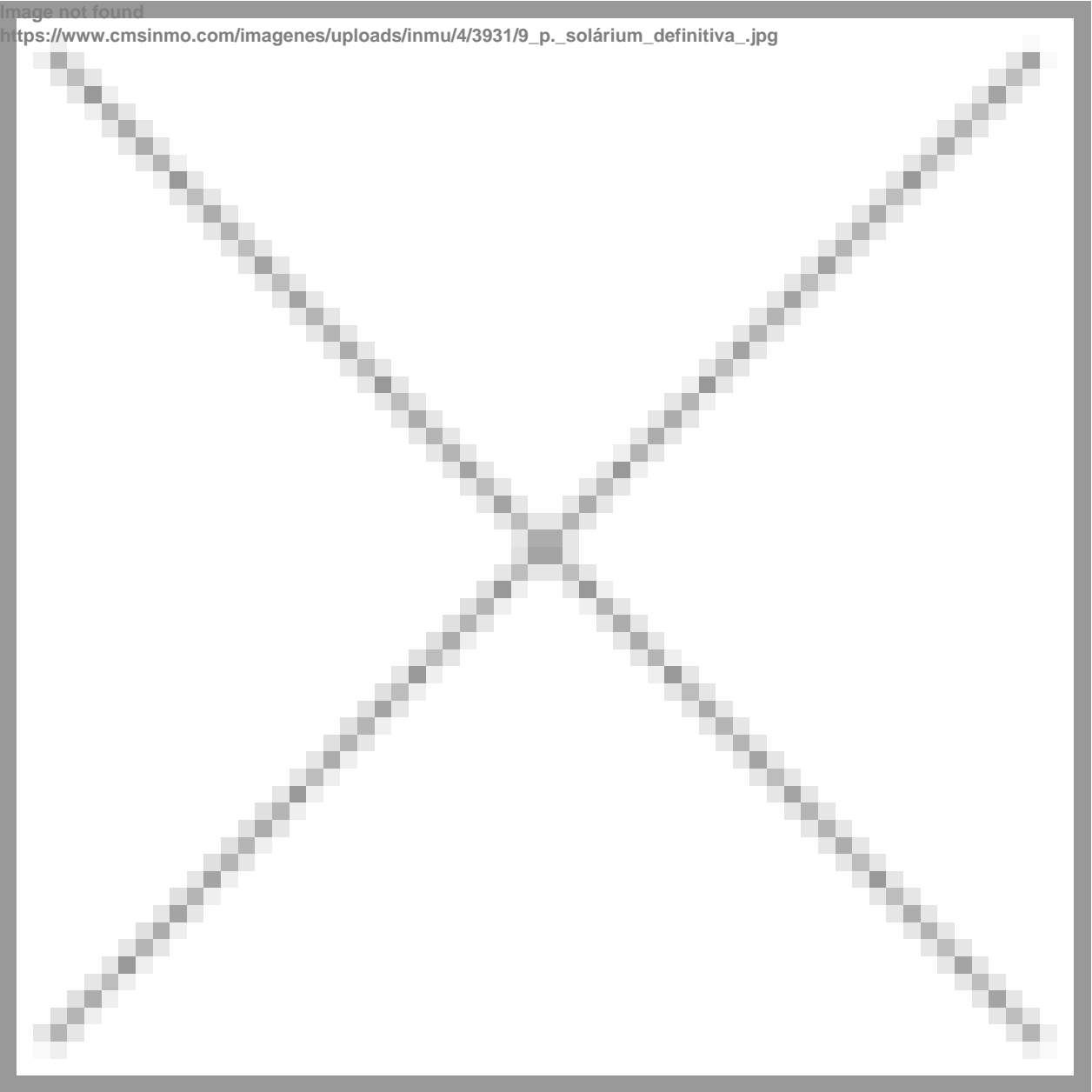
Vivienda 9 Planta.		Uso.	S. Útil.	S. Const.
Tipo PLANTA PRIMERA	Baja.	Vivienda.	58.95 m ²	69.74 m²
		Lavadero.	2.75 m ²	2.75 m²
		Terraza.	11.20 m ²	11.20 m²
		Solárium.	68.80 m ²	79.97 m²
		Total m².	141.70 m²	163.66 m²



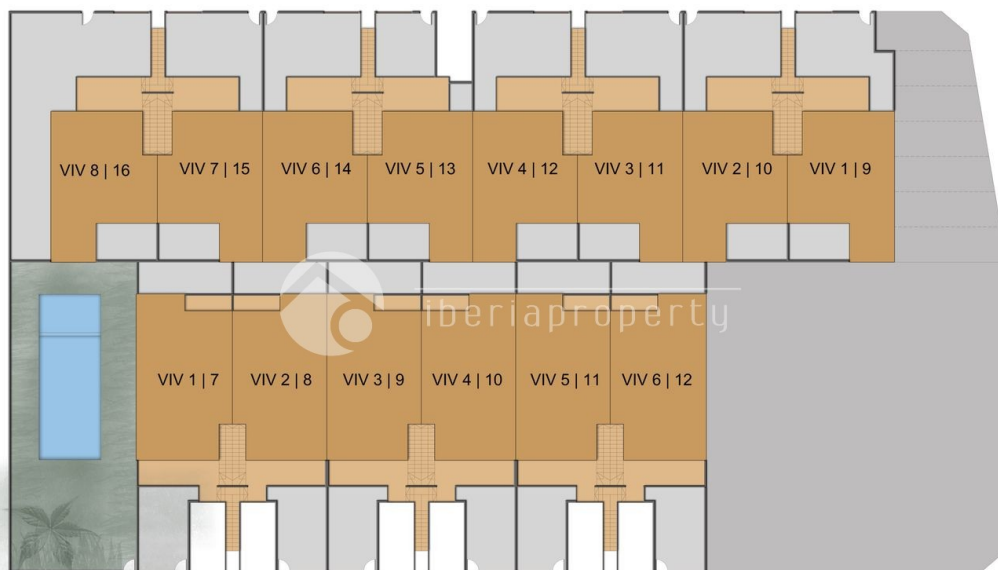
PLAYAMAR II

Image not found

https://www.cmsinmo.com/imagenes/uploads/inmu/4/3931/9_p._solárium_definitiva_.jpg



PLAYAMAR II



PLAYAMAR I

















"OUR EXPERIENCE IS YOUR GUARANTEE"