



REF: # 3227

JAVEA (JAVEA)

Iris



#### INFO

|                 |               |
|-----------------|---------------|
| PRICE:          | 329.000 €     |
| PROPERTY TYPE:  | Villa         |
| CITY:           | Javea (Javea) |
| BEDROOMS:       | 3             |
| Bathrooms:      | 2             |
| Build ( m2 ):   | 140           |
| Plot ( m2 ):    | 1.000         |
| Terrace ( m2 ): | 18            |
| Year:           | 2015          |
| Floor:          | 1             |
| Old price       | -             |



#### DESCRIPTION

These villas are built with ICF \*(Insulated Concrete Framework) and in total reduce the carbon footprint of the build and running costs by up to 40% There are various different types of build, and all the glazing in the property uses high tech solar reflecting glass keeping the inside cool, and allowing for maximum internal light. Construction is normally around 8 months from obtaining the licences. Please note that the prices stated are for the villa build only and do not include the plot as we have a large selection of possible situations where we can build these structures with various different plot prices. All the projects include underfloor heating, and full air-conditioning. Also available is a (grey-water) recycling system that allows the household to save up to 40% on the costs for their water supply.

#### ENERGETIC CERTIFIED



|   |  |  |   |
|---|--|--|---|
| <b>STYLE</b> <ul style="list-style-type: none"><li>• Modern</li></ul>   | <b>VIEWS</b> <ul style="list-style-type: none"><li>• Mountain views</li></ul>                                    | <b>AIRCONDITIONING</b> <ul style="list-style-type: none"><li>• Central airconditioning</li></ul>   | <b>DISTANCE TO :</b> <div>Beach : 3 Km</div> <div>Airport: 70 Km</div> <div>Town center : 3 Km</div>                                  |
| <b>FURNITURE</b> <ul style="list-style-type: none"><li>• Not furnished</li></ul>  | <b>PARKING</b> <div>Parking no Cars: 2</div>   | <b>FLOORING</b> <ul style="list-style-type: none"><li>• Tile floors</li></ul>  | <b>KITCHEN</b> <ul style="list-style-type: none"><li>• Open kitchen</li><li>• Equipped kitchen</li><li>• Granite countertop</li></ul> |
| <b>GARDEN AND TERRACES</b> <ul style="list-style-type: none"><li>• Covered terrace</li><li>• Open terrace</li><li>• Lawn</li><li>• Private garden</li></ul> | <b>HEATING</b> <ul style="list-style-type: none"><li>• Floor heating</li><li>• Floor heating bathrooms</li></ul> | <b>EXTRA</b> <ul style="list-style-type: none"><li>• Built in wardrobes</li><li>• Reinforced door</li><li>• Double glazed windows</li><li>• Door bell with camera</li><li>• Storage room</li><li>• Water softener</li><li>• Internet</li></ul> |   |

Iris

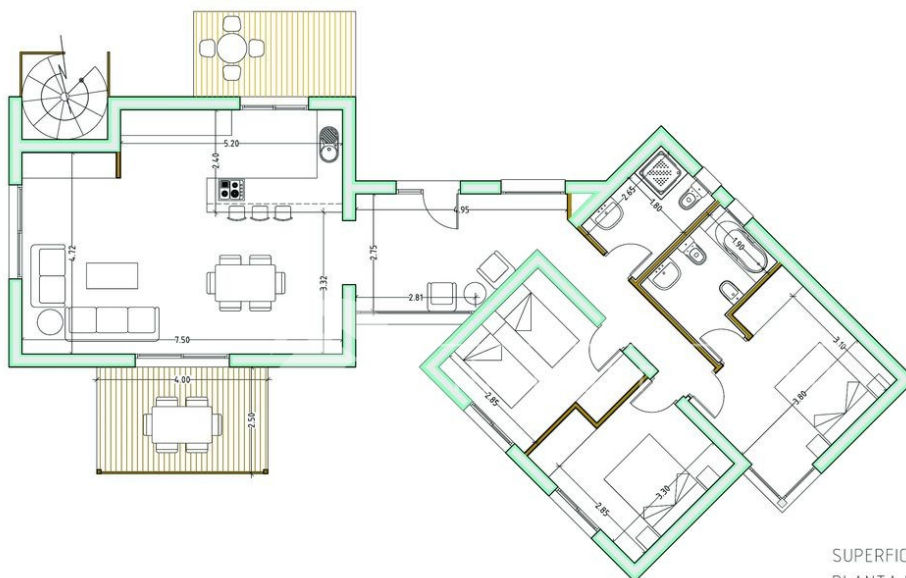


Iris









## SUPERFICIES CONSTRUIDAS

|                  |                         |
|------------------|-------------------------|
| PLANTA BAJA      | 125,90m <sup>2</sup>    |
| VIVIENDA         | 4,20m <sup>2</sup>      |
| ESCALERA         | 10,00m <sup>2</sup>     |
| PERGOLA          | 7,60m <sup>2</sup> (no) |
| TERRAZAS DESC.   | 140,10m <sup>2</sup>    |
| TOTAL CONSTRUIDA |                         |





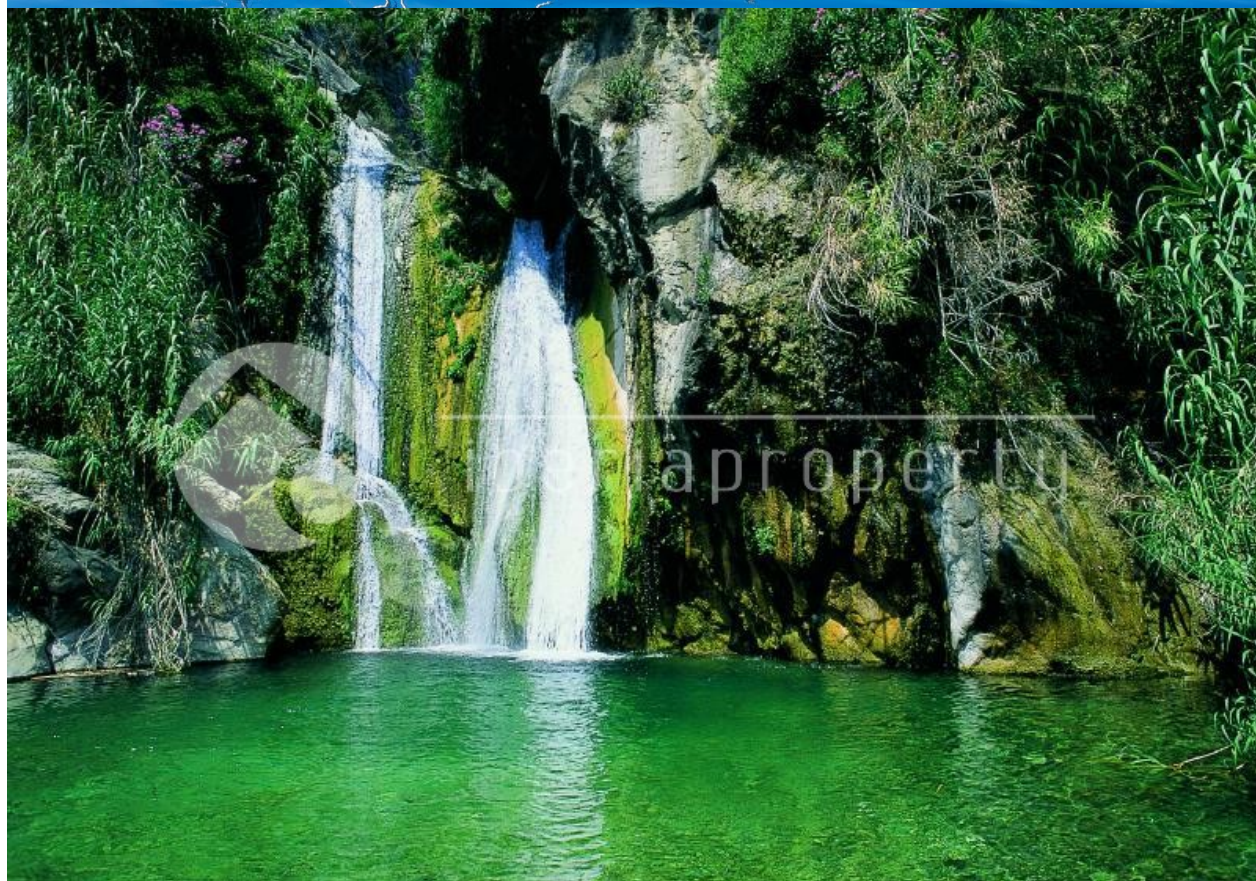
















***"OUR EXPERIENCE IS YOUR GUARANTEE"***