



REF: # 2955

CALPE/MORAIRA (BENISSA COSTA)



INFO

PRICE:	475.000 €
PROPERTY TYPE:	Villa
CITY:	Calpe/Moraira (Benissa costa)
BEDROOMS:	3
Bathrooms:	2
Build (m2):	160
Plot (m2):	763
Terrace (m2):	-
Year:	2014
Floor:	2
Old price	-



DESCRIPTION

In the green surrounding of Benissa, this exclusive project of only 6 villas will be built, nearby the beach, sailing school, shops and restaurants along the beautiful Mediterranean coast. This modern villa with sea views has been designed as a holiday home (see floor plan) and is surrounded by sunny terraces and has a private pool of 2,5 by 12 meters over the total width of the terrace. The living room, dining area and kitchen are one open space of 55 m2 which even seems bigger because of the high sliding doors and windows. On this floor are two guest bedrooms with shared bathroom and extra toilet. On the first floor is the master bedroom with walk in wardrobe and bathroom en-suite with bathtub and walk-in shower. It has a spectacular lounge terrace of 63 m2 with sea views to enjoy the sunset at the end of the day. From here it is only a 10 minutes drive to the long and sandy beaches of Calpe and the beach town of Moraira. In autumn 2014 the project developer will start the construction which will take one year. This company has a well-known reputation and has built other modern villas along the Costa Blanca and we will be showing you the show villa once you are here. An unique opportunity to

buy a modern villa in Spain, on a central location nearby the beach
against a very competitive price.

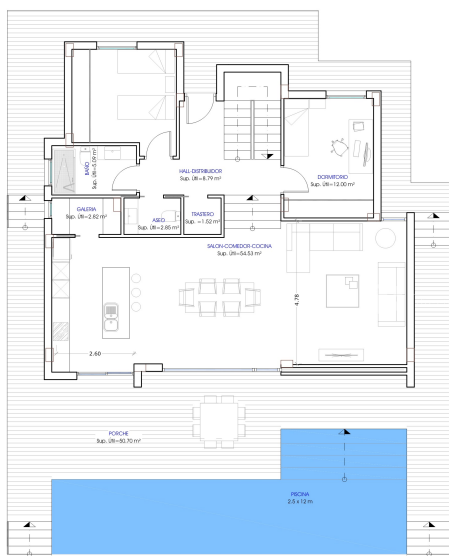


STYLE	VIEWS	AIRCONDITIONING	DISTANCE TO :
<ul style="list-style-type: none">• Modern	<ul style="list-style-type: none">• Sea views• Mountain views	<ul style="list-style-type: none">• Central airconditioning	Beach : 1 Km Town center : 3 Km
FURNITURE	PARKING	MAIN LIVING AREA	FLOORING
<ul style="list-style-type: none">• Not furnished	Garage no Cars : 1	<ul style="list-style-type: none">• Bathroom en-suite	<ul style="list-style-type: none">• Tile floors
KITCHEN	GARDEN AND TERRACES	HEATING	EXTRA
<ul style="list-style-type: none">• Open kitchen• Equipped kitchen	<ul style="list-style-type: none">• Covered terrace• Open terrace• Landscaped• Stone walls• Private garden	<ul style="list-style-type: none">• Central electric heating	<ul style="list-style-type: none">• Built in wardrobes• Reinforced door• Double glazed windows• Storage room• Laundry room

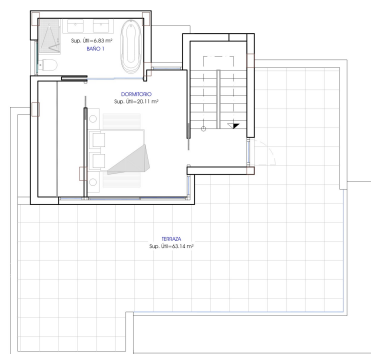








Planta baja



Planta primera

MODELO BENISA 4
Sup. construida= 159,51 m²

OPCION 1









"OUR EXPERIENCE IS YOUR GUARANTEE"