



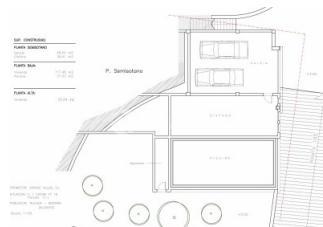
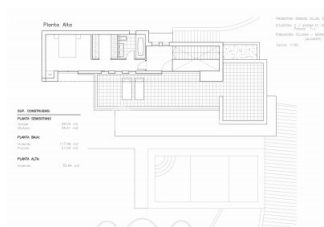
REF: # 1749

CALPE/MORAIRA (MORAIRA)



INFO

PRICE:	589.000 €
PROPERTY TYPE:	Villa
CITY:	Calpe/Moraira (Moraira)
BEDROOMS:	3
Bathrooms:	3
Build (m2):	259
Plot (m2):	800
Terrace (m2):	21
Year:	2013
Floor:	2
Old price	-



DESCRIPTION

New villa with beautiful sea and mountain views. South facing in quiet residencial area. Walking distance to Moraira and the beach High standards, floor heating, Custom made after buyers wishes

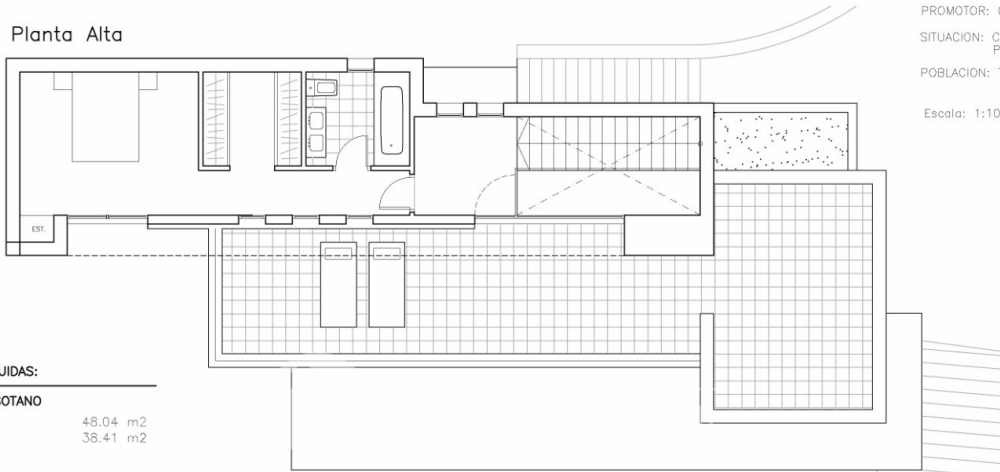
ENERGETIC CERTIFIED



STYLE	VIEWS	AIRCONDITIONING	DISTANCE TO :
<ul style="list-style-type: none">• Modern	<ul style="list-style-type: none">• Panoramic views• Sea views• Mountain views	<ul style="list-style-type: none">• Central airconditioning	Beach : 1 Km <hr/> Airport: 70 Km <hr/> Town center : 1 Km
ORIENTATION	PARKING	MAIN LIVING AREA	FLOORING
South <hr/>	Garage no Cars : 2 <hr/> Parking no Cars: 3	<ul style="list-style-type: none">• Bathroom en-suite	<ul style="list-style-type: none">• Laminate floors• Marble floors
KITCHEN	GARDEN AND TERRACES	HEATING	EXTRA
<ul style="list-style-type: none">• Open kitchen• Equipped kitchen• Granite countertop	<ul style="list-style-type: none">• Covered terrace• Open terrace• Exterior lights• Automatic watering system• Fruit trees• Palm trees• Landscaped• Fenced• Stone walls• Electric gate• Outdoor kitchen• Private garden	<ul style="list-style-type: none">• Central gas heating	<ul style="list-style-type: none">• Built in wardrobes• Alarm• Reinforced door• Double glazed windows• Door bell with camera• Satellite TV• Storage room• Laundry room



Planta Alta



PROMOTOR: ORANGE VILLAS, S.L
SITUACION: C / XIXONA Nº 18
Parcela 7-L
POBLACION: TEULADA — MORAIRA
(ALICANTE)
Escala: 1:100

SUP. CONSTRUIDAS:

PLANTA SEMISOTANO

Garaje 48.04 m²
Diafano 38.41 m²

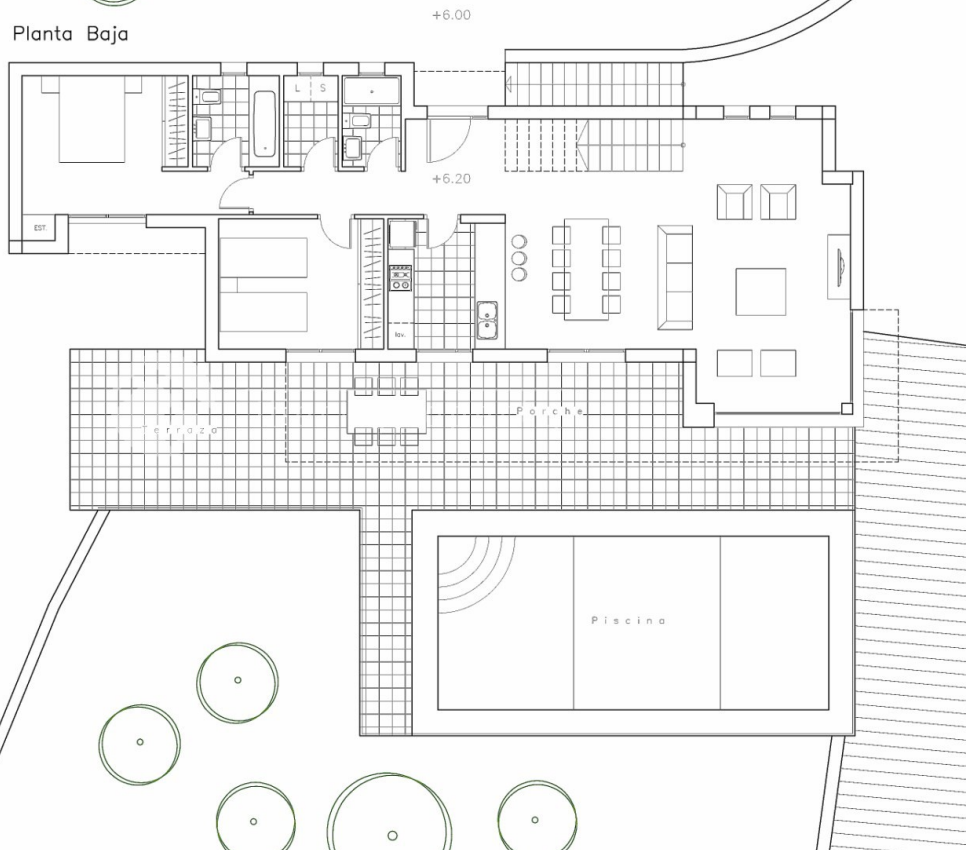
PLANTA BAJA:

Vivienda 117.46 m²
Porche 21.03 m²

PLANTA ALTA:

Vivienda 55.64 m²

Planta Baja



SUP. CONSTRUIDAS:

PLANTA SEMISOTANO

Garaje 48.04 m²
Diafano 38.41 m²

PLANTA BAJA:

Vivienda 117.46 m²
Porche 21.03 m²

PLANTA ALTA:

Vivienda 55.64 m²

PROMOTOR: ORANGE VILLAS, S.L
SITUACION: C / XIXONA Nº 18
POBLACION: TEULADA — MORAIRA
(ALICANTE)
Escala: 1:100

SUP. CONSTRUIDAS:

PLANTA SEMISOTANO

Garaje	48.04 m ²
Diafano	38.41 m ²

PLANTA BAJA:

Vivienda	117.46 m ²
Porche	21.03 m ²

PLANTA ALTA:

Vivienda	55.64 m ²
----------	----------------------

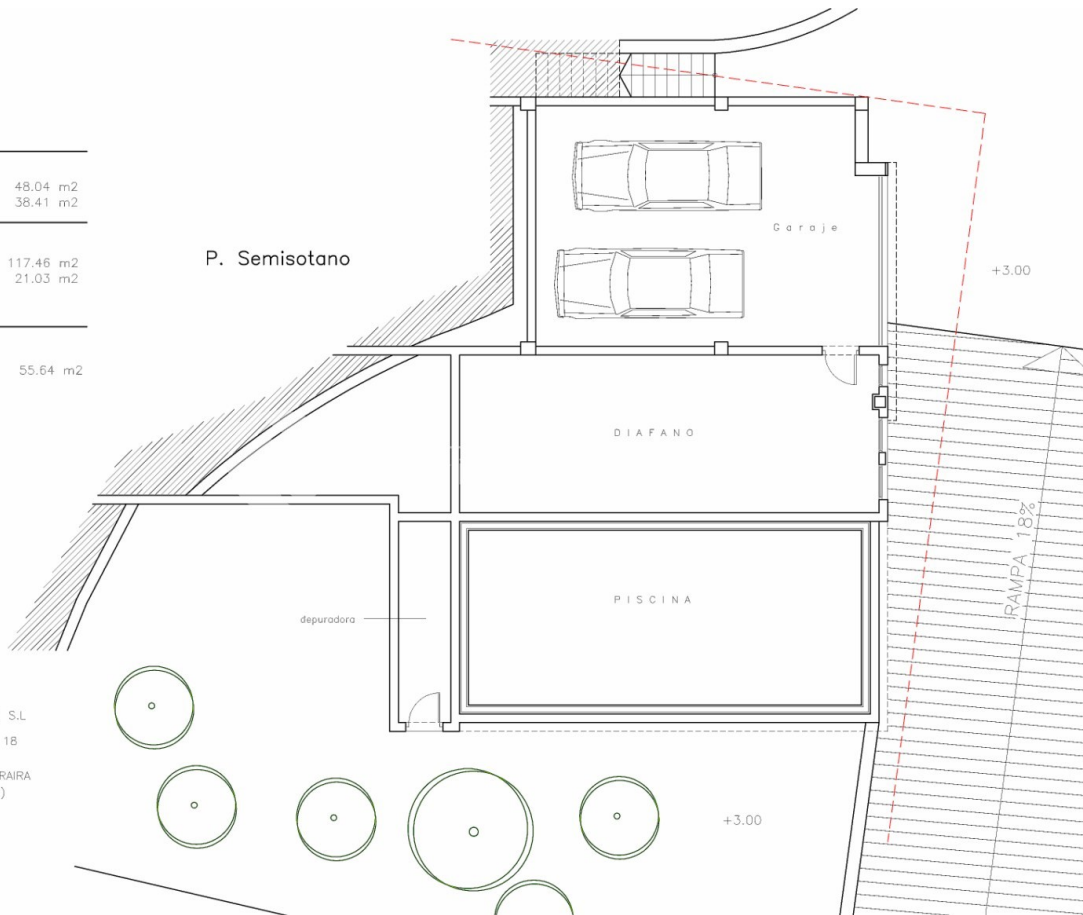
P. Semisotano

PROMOTOR: ORANGE VILLAS, S.L

SITUACION: C / XIXONA N° 18
Parcela 7-L

POBLACION: TEULADA - MORAIRA
(ALICANTE)

Escala: 1:100











"OUR EXPERIENCE IS YOUR GUARANTEE"