



REF: # 13324

ALBIR (ALBIR CENTRO)



#### INFO

PRICE: 380.000 €

PROPERTY TYPE: Apartment

CITY: Albir (Albir centro)

BEDROOMS: 2

Bathrooms: 2

Build ( m2 ): 138

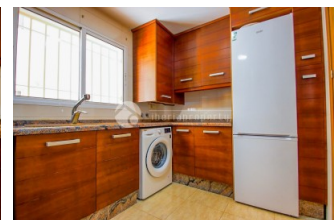
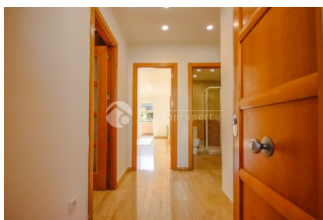
Plot ( m2 ): -

Terrace ( m2 ): -

Year: 2005

Floor: 1

Old price -



#### DESCRIPTION

Located in La Mina Residential Complex, this apartment stands out for its prime location right in the centre of El Albir, with all amenities close by (supermarkets, restaurants, pharmacies, public transport, shops...) and just a 2-minute walk to the beach. With a south-east facing orientation, the property enjoys excellent natural light and sunshine, making it comfortable all year round. Layout: Entrance hall Separate kitchen Full bathroom for general use Spacious, bright living-dining room with access to the terrace Large terrace/balcony, perfect for enjoying the sun and Mediterranean weather Master bedroom with en-suite bathroom for added privacy and comfort In addition, the complex offers a communal swimming pool, a heated indoor pool for winter, and green areas. The building also has a lift. Ideal as a permanent home, holiday apartment, or investment in one of the most sought-after areas of the Costa Blanca.

#### ENERGETIC CERTIFIED



STYLE	VIEWS	AIRCONDITIONING	DISTANCE TO :
<ul style="list-style-type: none"> <li>Contemporary</li> <li>Mediterranean</li> </ul>	<ul style="list-style-type: none"> <li>Panoramic views</li> <li>Mountain views</li> </ul>	<ul style="list-style-type: none"> <li>Livingroom</li> <li>Kitchen</li> <li>Bedrooms</li> </ul>	<div>Beach : 200 m</div> <div>Airport: 40 Km</div> <div>Town center : 50 m</div>
ORIENTATION	FURNITURE	PARKING	FLOORING
South east	<ul style="list-style-type: none"> <li>Not furnished</li> </ul>	Garage no Cars : 1	<ul style="list-style-type: none"> <li>Marble floors</li> </ul>
KITCHEN	GARDEN AND TERRACES	HEATING	EXTRA
<ul style="list-style-type: none"> <li>Closed kitchen</li> <li>Equipped kitchen</li> <li>Granite countertop</li> </ul>	<ul style="list-style-type: none"> <li>Open terrace</li> <li>Exterior lights</li> <li>Fruit trees</li> <li>Palm trees</li> <li>Play Ground</li> <li>Stone walls</li> <li>Communal Garden</li> </ul>	<ul style="list-style-type: none"> <li>Central electric heating</li> <li>Radiators</li> </ul>	<ul style="list-style-type: none"> <li>Built in wardrobes</li> <li>Reinforced door</li> <li>Double glazed windows</li> <li>Satellite TV</li> <li>Lift</li> <li>Internet</li> </ul>







































***"OUR EXPERIENCE IS YOUR GUARANTEE"***