



REF: # 12939

PILAR DE LA HORADADA



#### INFO

**PRICE:** 249.000 €

**PROPERTY TYPE:** Apartment

**CITY:** Pilar De La Horadada

**BEDROOMS:** 2

**Bathrooms:** 2

**Build ( m2 ):** 66

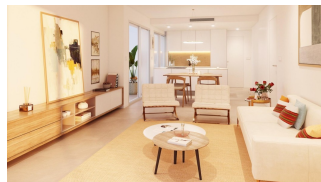
**Plot ( m2 ):** -

**Terrace ( m2 ):** 15

**Year:** -

**Floor:** -

**Old price** -



#### DESCRIPTION

##### NEW BUILD RESIDENTIAL COMPLEX IN PILAR DE LA HORADADA

New Build residential of apartments and penthouses with exceptional finishes in Pilar de la Horadada. Ground floor apartments with private gardens, middle floor apartments with large terraces and top floor penthouses with private solariums. The kitchen is delivered fully furnished, leaving enough space for you to choose the appliances according to your preferences. Only noble materials have been used, such as interior carpentry made entirely of wood and exterior Climalit/aluminium windows, ideal both for their design and for the high thermal-acoustic level they have. All the terraces are south-facing. Automatic gates in the residential, both for pedestrian access and vehicle access. The building is surrounded by gardens, it will also have a communal swimming pool, parking inside the complex and each property has its own private storage room. In the vicinity of this residential complex you will find all the facilities of public transport, schools, supermarkets, shopping centres, golf courses and fantastic municipal parks with their children's playgrounds. Everything at your fingertips so that you can enjoy an excellent location. Pilar de la Horadada is a typical

Spanish village in the most southern part of the Costa Blanca. The large main street has supermarkets, lots of shops, restaurants and bars and some lovely squares. The beautiful beaches of Torre de la Horadada and Mil Palmeras with fine sand promenade is just 5 minutes away. The airports of Corvera (Murcia) and Alicante are respectively 40 and 55 minutes away.



**VIEWS**

- Panoramic views

**AIRCONDITIONING**

- Central airconditioning

**PARKING**

Parking no Cars: 1

**GARDEN AND  
TERRACES**

- Fenced

**EXTRA**

- Lift







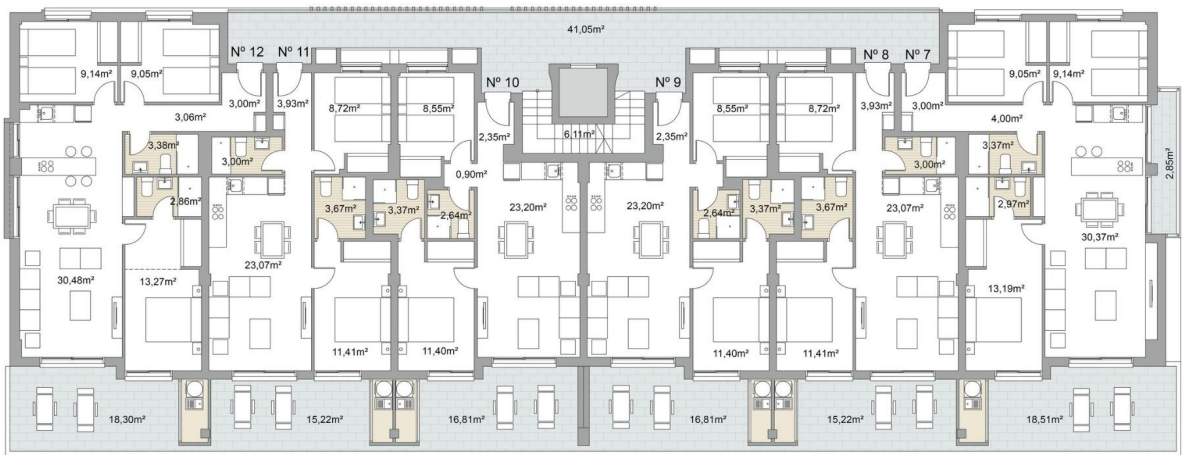








BLOQUE 1 - Planta 1ª



Vivienda Nº12		Vivienda Nº11		Vivienda Nº10		Vivienda Nº9		Vivienda Nº8		Vivienda Nº7	
Sup. construida / Built area	90,60 m²	Sup. construida / Built area	64,18 m²	Sup. construida / Built area	63,76 m²	Sup. construida / Built area	63,76 m²	Sup. construida / Built area	64,18 m²	Sup. construida / Built area	91,95 m²
Terraza / Terrace	18,30 m²	Terraza / Terrace	15,22 m²	Terraza / Terrace	16,81 m²	Terraza / Terrace	16,81 m²	Terraza / Terrace	15,22 m²	Terraza / Terrace	21,36 m²
Trastero / storage room	2,44 m²	Trastero / storage room	2,44 m²	Trastero / storage room	2,47 m²	Trastero / storage room	2,40 m²	Trastero / storage room	2,40 m²	Trastero / storage room	3,40 m²
Total	111,34 m²	Total	81,84 m²	Total	83,04 m²	Total	82,97 m²	Total	81,80 m²	Total	116,71 m²







Escala / Scale 0 1 2 3 4 5 6



**"OUR EXPERIENCE IS YOUR GUARANTEE"**