



REF: # 12805

TORREVIEJA



INFO

PRICE: 620.000 €

PROPERTY TYPE: Apartment

CITY: Torrevieja

BEDROOMS: 2

Bathrooms: 2

Build (m2): 151

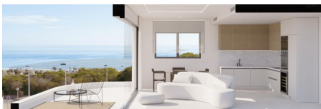
Plot (m2): -

Terrace (m2): 76

Year: -

Floor: -

Old price -



DESCRIPTION

New Build Bungalows with Sea Views in La Mata, Torrevieja Privileged Location 300 Metres from the Beach This exclusive new development is located in La Mata, Torrevieja, one of the most sought after areas of the Costa Blanca. Just 300 metres from the beach, this development offers an exceptional natural setting with panoramic sea views and easy access to all essential amenities. La Mata is a vibrant area with a special charm, surrounded by promenades, restaurants, cafés and supermarkets, making it the perfect destination for both year-round living and enjoying a second home by the sea. Modern Design and Energy Efficiency This development stands out for its elegant Mediterranean architecture with an avant-garde touch. Designed under the Passivhaus standard, it guarantees a sustainable construction that provides maximum thermal comfort and energy efficiency, reducing consumption and environmental impact. The homes feature high quality finishes, spacious rooms and abundant natural light, achieving a perfect balance between design and functionality. Housing Options for All Lifestyles Ground floor flats with a large private garden with sea views and enough space for a private swimming pool. They also include a semi-basement with the possibility of adding additional bedrooms. Top floor flats with large balcony, private

solarium and spectacular sea views, perfect for enjoying the Mediterranean sun. Exclusive Communal Areas This development offers spaces designed for comfort and relaxation: Communal infinity pool, ideal for cooling off with panoramic views. Underground parking space included in each property. Proximity to Points of Interest La Mata Beach - 300 m. Torrevieja town centre - 6 km. Parque Natural de las Lagunas de La Mata-Torrevieja - 2 km. La Marquesa Golf Course - 15 km. Alicante airport - 40 km (approx. 40 min). Murcia Airport - 65 km (approx. 1 hour). Your home on the Costa Blanca awaits you If you are looking for a luxury flat with sea views, in a privileged location and with all amenities, this residential is your best option. Contact us today for more information and to arrange a viewing.



VIEWS

- Panoramic views
- Sea views

AIRCONDITIONING

- Central airconditioning

PARKING

Parking no Cars: 1

**GARDEN AND
TERRACES**

- Fenced

PROPERTY GALLERY











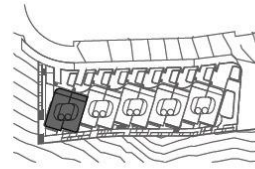






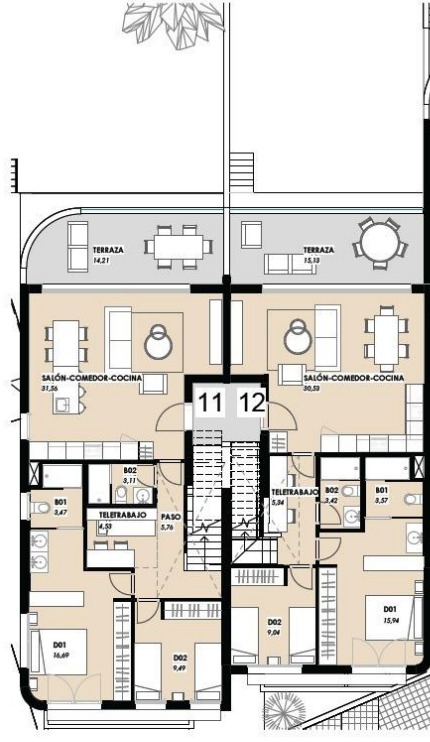




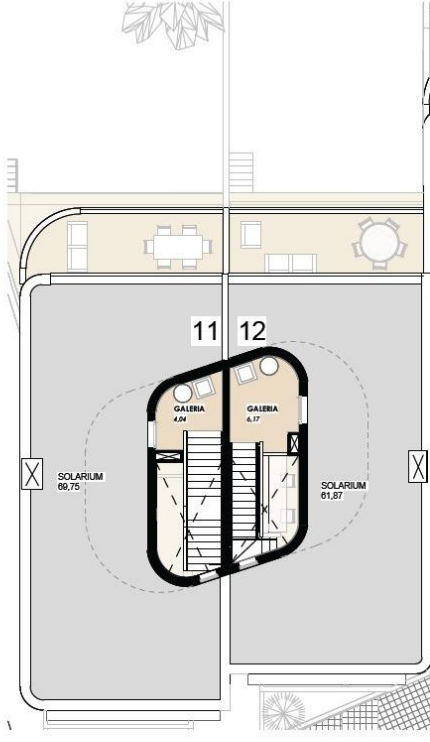


VIVIENDA 11 - PRIMERA PLANTA Y SOLARIUM / APARTMENT 11 - TOP FLOOR AND SOLARIUM		(m ²)
SUPERFICIE EN INTERIOR VIVIENDA ESTRUT. INTERIOR AREA APARTMENT		78.65
PLANTA PRIMERA / TOP FLOOR		74.61
GALERÍA / GALLERY		4.04
SUPERFICIE EXTERIOR VIVIENDA ESTRUT. EXTERIOR AREA APARTMENT		83.96
TERRAZA / BALCONY		14.21
SOLARIUM / SOLARIUM		69.75
TOTAL SUPERFICIES VIVIENDA 11 TOTAL AREA APARTMENT 11		162.61

VIVIENDA 12 - PLANTA PRIMERA Y SOLARIUM / APARTMENT 12 - TOP FLOOR AND SOLARIUM		(m ²)
SUPERFICIE EN INTERIOR VIVIENDA ESTRUT. INTERIOR AREA APARTMENT		78.01
PLANTA PRIMERA / TOP FLOOR		67.84
GALERÍA / GALLERY		6.17
SUPERFICIE EXTERIOR VIVIENDA ESTRUT. EXTERIOR AREA APARTMENT		77.00
TERRAZA / BALCONY		13.13
SOLARIUM / SOLARIUM		61.87
TOTAL SUPERFICIES VIVIENDA 12 TOTAL AREA APARTMENT 12		151.01

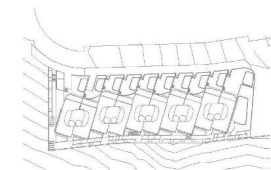


VIVIENDA 11-12_PLANTA PRIMERA/ APARTMENT 11-12_TOP FLOOR
1: 100



VIVIENDA 11-12_SOLARIUM/ APARTMENT 11-12_SOLARIUM
1: 100

Plano sujeto a posibles modificaciones por razones o
exigencias de índole técnica y jurídica.
Floor plan opened to modifications for technical or legal
reasons



PLANTA BAJA / GROUND FLOOR



"OUR EXPERIENCE IS YOUR GUARANTEE"