



REF: # 12804

TORREVIEJA



INFO

PRICE: 550.000 €

PROPERTY TYPE: Apartment

CITY: Torrevieja

BEDROOMS: 2

Bathrooms: 2

Build (m2): 166

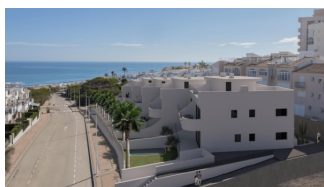
Plot (m2): 43

Terrace (m2): 19

Year: -

Floor: -

Old price -



DESCRIPTION

New Build Bungalows with Sea Views in La Mata, Torrevieja Privileged Location 300 Metres from the Beach This exclusive new development is located in La Mata, Torrevieja, one of the most sought after areas of the Costa Blanca. Just 300 metres from the beach, this development offers an exceptional natural setting with panoramic sea views and easy access to all essential amenities. La Mata is a vibrant area with a special charm, surrounded by promenades, restaurants, cafés and supermarkets, making it the perfect destination for both year-round living and enjoying a second home by the sea. Modern Design and Energy Efficiency This development stands out for its elegant Mediterranean architecture with an avant-garde touch. Designed under the Passivhaus standard, it guarantees a sustainable construction that provides maximum thermal comfort and energy efficiency, reducing consumption and environmental impact. The homes feature high quality finishes, spacious rooms and abundant natural light, achieving a perfect balance between design and functionality. Housing Options for All Lifestyles Ground floor flats with a large private garden with sea views and enough space for a private swimming pool. They also include a semi-basement with the possibility of adding additional bedrooms. Top floor flats with large balcony, private

solarium and spectacular sea views, perfect for enjoying the Mediterranean sun. Exclusive Communal Areas This development offers spaces designed for comfort and relaxation: Communal infinity pool, ideal for cooling off with panoramic views. Underground parking space included in each property. Proximity to Points of Interest La Mata Beach - 300 m. Torrevieja town centre - 6 km. Parque Natural de las Lagunas de La Mata-Torrevieja - 2 km. La Marquesa Golf Course - 15 km. Alicante airport - 40 km (approx. 40 min). Murcia Airport - 65 km (approx. 1 hour). Your home on the Costa Blanca awaits you If you are looking for a luxury flat with sea views, in a privileged location and with all amenities, this residential is your best option. Contact us today for more information and to arrange a viewing.



VIEWS

- Panoramic views
- Sea views

AIRCONDITIONING

- Central airconditioning

PARKING

Parking no Cars: 1

**GARDEN AND
TERRACES**

- Fenced
- Private garden

PROPERTY GALLERY















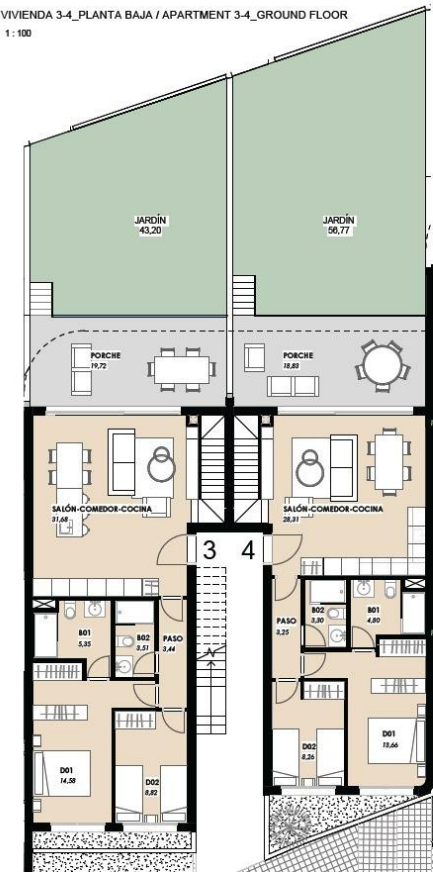






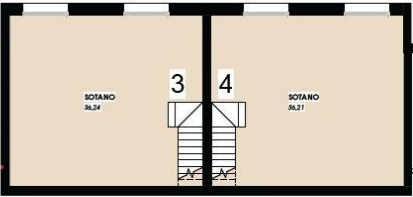
VIVIENDA 3-4_PLANTA BAJA / APARTMENT 3-4_GROUND FLOOR

1:100



VIVIENDA 3-4_SÓTANO / APARTMENT 3-4_BASMENT

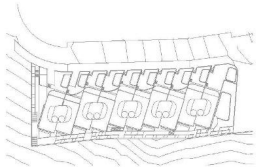
1:100



VIVIENDA 3 - PLANTA BAJA Y SÓTANO / APARTMENT 3 - GROUND FLOOR WITH BASEMENT	(m²)
SUPERFICIE BRU INTERIOR VIVIENDA RESPEX INTERIOR AREA APARTMENT	183.62
PLANTA BAJA / GROUND FLOOR	67.38
SEMI-SÓTANO / SEMI-BASEMENT	36.24
SUPERFICIE EXTERIOR VIVIENDA RESPEX EXTERIOR AREA APARTMENT	42.92
PORCHE / PORCH	19.72
JARDÍN / GARDEN	43.20
TOTAL SUPERFICIES VIVIENDA 3 TOTAL AREA APARTMENT 3	166.54

VIVIENDA 4 - PLANTA BAJA Y SÓTANO / APARTMENT 4 - GROUND FLOOR WITH BASEMENT	(m²)
SUPERFICIE BRU INTERIOR VIVIENDA RESPEX INTERIOR AREA APARTMENT	97.79
PLANTA BAJA / GROUND FLOOR	63.38
SEMI-SÓTANO / SEMI-BASEMENT	36.21
SUPERFICIE EXTERIOR VIVIENDA RESPEX EXTERIOR AREA APARTMENT	75.60
PORCHE / PORCH	18.83
JARDÍN / GARDEN	56.77
TOTAL SUPERFICIES VIVIENDA 4 TOTAL AREA APARTMENT 4	173.39

Plano sujeto a posibles modificaciones por razones o
exigencias de índole técnica y jurídica
Floor plan opened to modifications for technical or legal
reasons



PLANTA BAJA / GROUND FLOOR



"OUR EXPERIENCE IS YOUR GUARANTEE"