



REF: # 12740

LOS ALCAZARES (SERENA GOLF)



#### INFO

PRICE:	269.000 €
PROPERTY TYPE:	Apartment
CITY:	Los Alcazares (Serena Golf)
BEDROOMS:	2
Bathrooms:	2
Build ( m2 ):	74
Plot ( m2 ):	-
Terrace ( m2 ):	32
Year:	
Floor:	-
Old price	-



#### DESCRIPTION

NEW BUILD RESIDENTIAL APARTMENT IN "LA SERENA GOLF COURSE" LOS ALCAZARES - New Build residential is composed of 32 apartments and penthouses with 2 and 3 bedrooms and 9 exclusive villas combining modern design, quality and functionality. The unbeatable location offers amazing views to golf and the Mar Menor sea. This modern 74m2 apartment consists of 2 bedrooms, 2 bathrooms, open plan kitchen and the lounge area, fitted wardrobes, terraces, parking space and storage rooms. Penthouses have private solariums. Residential located in a frontline of the prestigious golf course "La Serena Golf". This golf course is well renowned for its lakes and vegetation that interweave with the golf course. The water and lakes are present in 16 of the 18 holes, but all the course is designed to offer the golfer different strategies in each hole. Another aspect that makes this golf course unique is that it's connected by walking to the city centre, something impossible to find in other golf locations that allow us to enjoy the calm and the beauty of the area without refusing the access to the

services that Los Alcázares offers. Residential located in Los Alcázares an exceptional area on the Costa Cálida at only 25 minutes from Murcia airport and 55 min from Alicante airport. The area is connected through highway with the cities of Cartagena, Murcia and Alicante and the rest of the beaches of the Costa Cálida and the Costa Blanca.



<b>STYLE</b> <ul style="list-style-type: none"> <li>• Modern</li> <li>• Contemporary</li> </ul>	<b>VIEWS</b> <ul style="list-style-type: none"> <li>• Panoramic views</li> </ul>	<b>AIRCONDITIONING</b> <ul style="list-style-type: none"> <li>• Central airconditioning</li> </ul>	<b>DISTANCE TO :</b> <div>Beach : 1 Km</div> <div>Airport: 40 Km</div> <div>Town center : 1 Km</div>
<b>ORIENTATION</b> <div>South west</div>	<b>FURNITURE</b> <ul style="list-style-type: none"> <li>• Not furnished</li> </ul>	<b>PARKING</b> <div>Parking no Cars: 1</div>	<b>FLOORING</b> <ul style="list-style-type: none"> <li>• Tile floors</li> </ul>
<b>KITCHEN</b> <ul style="list-style-type: none"> <li>• Open kitchen</li> <li>• Equipped kitchen</li> <li>• Granite countertop</li> </ul>	<b>GARDEN AND TERRACES</b> <ul style="list-style-type: none"> <li>• Covered terrace</li> <li>• Open terrace</li> <li>• Fenced</li> <li>• Stone walls</li> <li>• Private garden</li> <li>• Communal Garden</li> </ul>	<b>HEATING</b> <ul style="list-style-type: none"> <li>• Central electric heating</li> </ul>	<b>EXTRA</b> <ul style="list-style-type: none"> <li>• Built in wardrobes</li> <li>• Reinforced door</li> <li>• Double glazed windows</li> <li>• Lift</li> </ul>



## PROPERTY GALLERY



















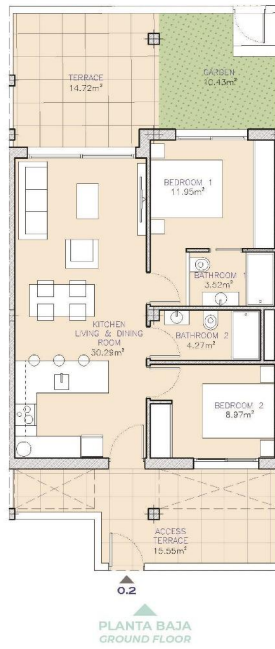
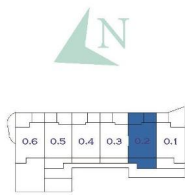






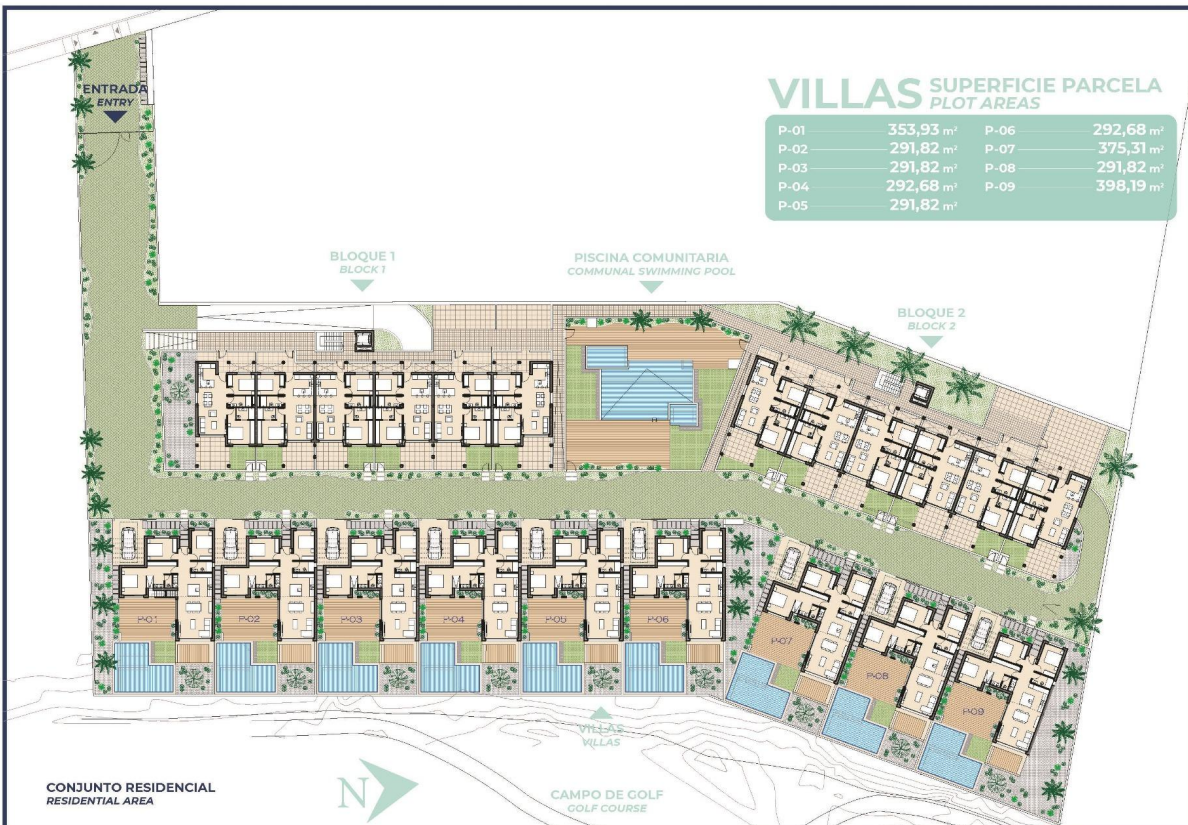
## APART. 0.2

SUPERFICIE CONSTRUIDA BUILT AREA	68,70 m <sup>2</sup>
TERRAZA TERRACE	14,72 m <sup>2</sup>
JARDÍN GARDEN	10,43 m <sup>2</sup>
ACCESO TERRAZA ACCESS TERRACE	15,55 m <sup>2</sup>
TOTAL	109,40 m <sup>2</sup>



## VILLAS SUPERFICIE PARCELA PLOT AREAS

P-01	353,93 m <sup>2</sup>	P-06	292,68 m <sup>2</sup>
P-02	291,82 m <sup>2</sup>	P-07	375,31 m <sup>2</sup>
P-03	291,82 m <sup>2</sup>	P-08	291,82 m <sup>2</sup>
P-04	292,68 m <sup>2</sup>	P-09	398,19 m <sup>2</sup>
P-05	291,82 m <sup>2</sup>		



"OUR EXPERIENCE IS YOUR GUARANTEE"