



REF: # 12697

LA MANGA DEL MAR MENOR



INFO

PRICE:	455.000 €
PROPERTY TYPE:	Villa
CITY:	La Manga Del Mar Menor
BEDROOMS:	2
Bathrooms:	2
Build (m2):	92
Plot (m2):	440
Terrace (m2):	86
Year:	-
Floor:	-
Old price	-



DESCRIPTION

NEW BUILT VILLA IN PLAYA HONDA Villa with basement, garage, private pool and solarium, fully finished and ready to move into. Located on a plot of more than 400 m2 and 1 km from the Mar Menor beach in Playa Honda, with all services around. Close to the famous La Manga golf course and the Calblanque natural park.

ENERGETIC CERTIFIED



VIEWS

- Panoramic views

AIRCONDITIONING

- Central airconditioning

PARKING

Parking no Cars: 1

**GARDEN AND
TERRACES**

- Fruit trees
- Fenced
- Private garden





















PLANTA BAJA

CUADRO DE SUPERFICIES SUPERFICIES ÚTILES

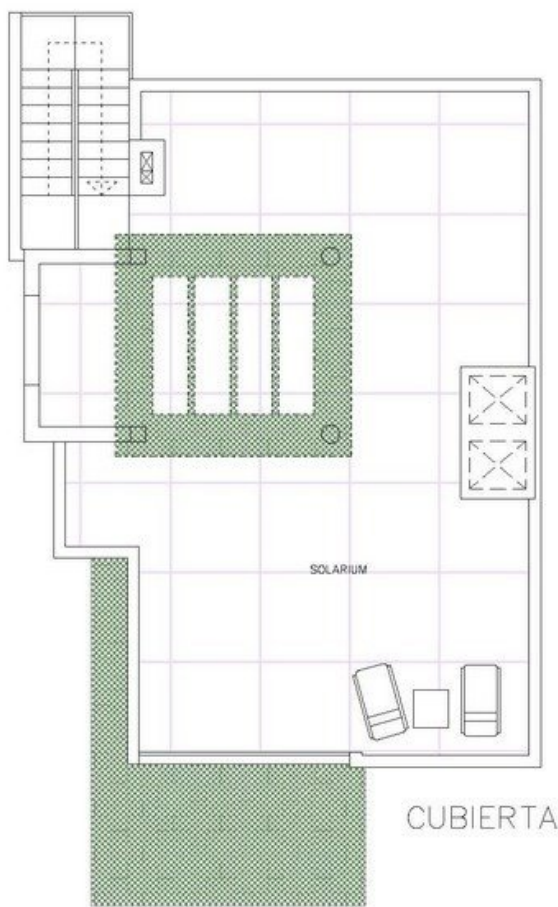
ESTAR-COMEDOR-COCINA	= 43,20 m ²
DORMITORIO 1 (D1)	= 13,35 m ²
BAÑO (B1)	= 4,25 m ²
DORMITORIO 2 (D2)	= 9,00 m ²
BAÑO 2 (B2)	= 4,40 m ²

PLANTA BAJA
ESCALA: 1/100

2 DORMITORIOS

CUADRO DE SUPERFICIES SUPERFICIES CONSTRUIDAS

SUP. TOTAL ÚTIL PLANTA BAJA	= 74,20 m ²
TOTAL CONSTRUIDA VIVIENDA	= 87,00 m ²
50% PORCHES CUBIERTOS	= 5,00 m ²
TOTAL CONSTRUIDA	= 92,00 m ²
TOTAL CONSTRUIDA PISCINA	= 32,00 m ²
SOLARIUM	= 76,00 m ²



CUADRO DE SUPERFICIES SUPERFICIES ÚTILES

ESTAR-COMEDOR-COCINA	= 43,20 m ²
DORMITORIO 1 (D1)	= 13,35 m ²
BAÑO (B1)	= 4,25 m ²
DORMITORIO 2 (D2)	= 9,00 m ²
BAÑO 2 (B2)	= 4,40 m ²

PLANTA CUBIERTA
ESCALA: 1/100

2 DORMITORIOS

CUADRO DE SUPERFICIES SUPERFICIES CONSTRUIDAS

SUP. TOTAL ÚTIL PLANTA BAJA	= 74,20 m ²
TOTAL CONSTRUIDA VIVIENDA	= 87,00 m ²
50% PORCHES CUBIERTOS	= 5,00 m ²
TOTAL CONSTRUIDA	= 92,00 m ²
TOTAL CONSTRUIDA PISCINA	= 32,00 m ²
SOLARIUM	= 76,00 m ²

"OUR EXPERIENCE IS YOUR GUARANTEE"