



REF: # 12687

TORREVIEJA



#### INFO

PRICE: 279.000 €

PROPERTY TYPE: Apartment

CITY: Torrevieja

BEDROOMS: 3

Bathrooms: 2

Build ( m2 ): 96

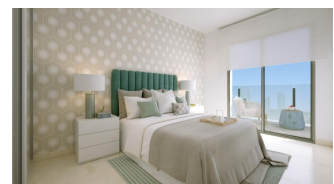
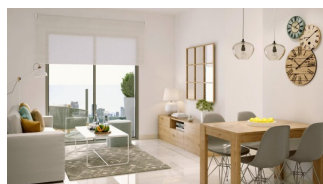
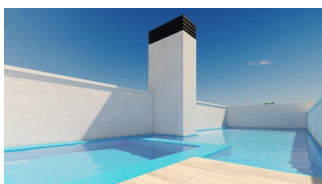
Plot ( m2 ): -

Terrace ( m2 ): 12

Year: -

Floor: -

Old price -



#### DESCRIPTION

New Build Apartments in Torrevieja, Just 150m from Playa del Cura  
Prime Location in Torrevieja, Close to Beaches and Amenities

Experience coastal living at its best with these brand-new apartments and penthouses in Torrevieja, located a mere 150 meters from Playa del Cura. These exclusive residences are nestled in a vibrant neighborhood with all essential amenities within reach, including shops, restaurants, and cafes. Perfectly positioned on Spain's Costa Blanca, Torrevieja offers residents a Mediterranean climate and relaxed lifestyle with easy access to both Alicante Airport (45 km) and Murcia Airport (65 km).

**Modern Design with Spacious Layouts and Quality Finishes** This new residential complex consists of 12 luxurious apartments and penthouses, offering 2 and 3-bedroom units designed for modern comfort. Each unit features an open-plan American-style kitchen that seamlessly flows into the living room, creating an ideal space for relaxation and entertainment. Bedrooms include fitted wardrobes with drawers, while bathrooms boast underfloor heating, high-quality fixtures, and shower enclosures. Large, double-glazed windows with thermal and acoustic insulation provide a quiet, temperature-controlled living environment, ensuring your home is a peaceful retreat.

**Premium Exterior and Energy-Efficient Features** Built with energy efficiency in mind, these apartments come with high-quality aluminum exterior carpentry with thermal break technology and automatic motorized shutters. Each unit is pre-installed for climate control through ducted air conditioning and heating, ensuring year-round comfort. For added security, all entrance doors are armored with secure locks, and interior doors are finished in white lacquer. Additionally, each unit is fitted with an energy-saving aerothermal system for hot water, which significantly reduces energy consumption.

**Exclusive Rooftop Solarium with Pool** Residents of this modern complex can enjoy exclusive access to a beautiful rooftop solarium with a communal swimming pool, ideal for soaking up the sun and enjoying panoramic views of Torrevieja. The building's rooftop offers a serene escape and is the perfect place to relax with family or friends.

**Living in Torrevieja: A Blend of Culture and Nature** Torrevieja is known for its scenic coastline, beautiful beaches, and unique salt lagoons. The town's popular seafront promenades and the charming Museo del Mar y de la Sal reflect its fishing and salt-mining history. Just a short drive away, the Natural Park of Las Lagunas de La Mata-Torrevieja offers picturesque trails and two stunning saltwater lagoons, one pink and one green, for nature enthusiasts to explore.

**Start Your Coastal Life Today** Don't miss the chance to own a stylish new home in this exceptional location. Contact us today to schedule a viewing and discover everything these exclusive apartments in Torrevieja have to offer!



**VIEWS**

- Panoramic views

**AIRCONDITIONING**

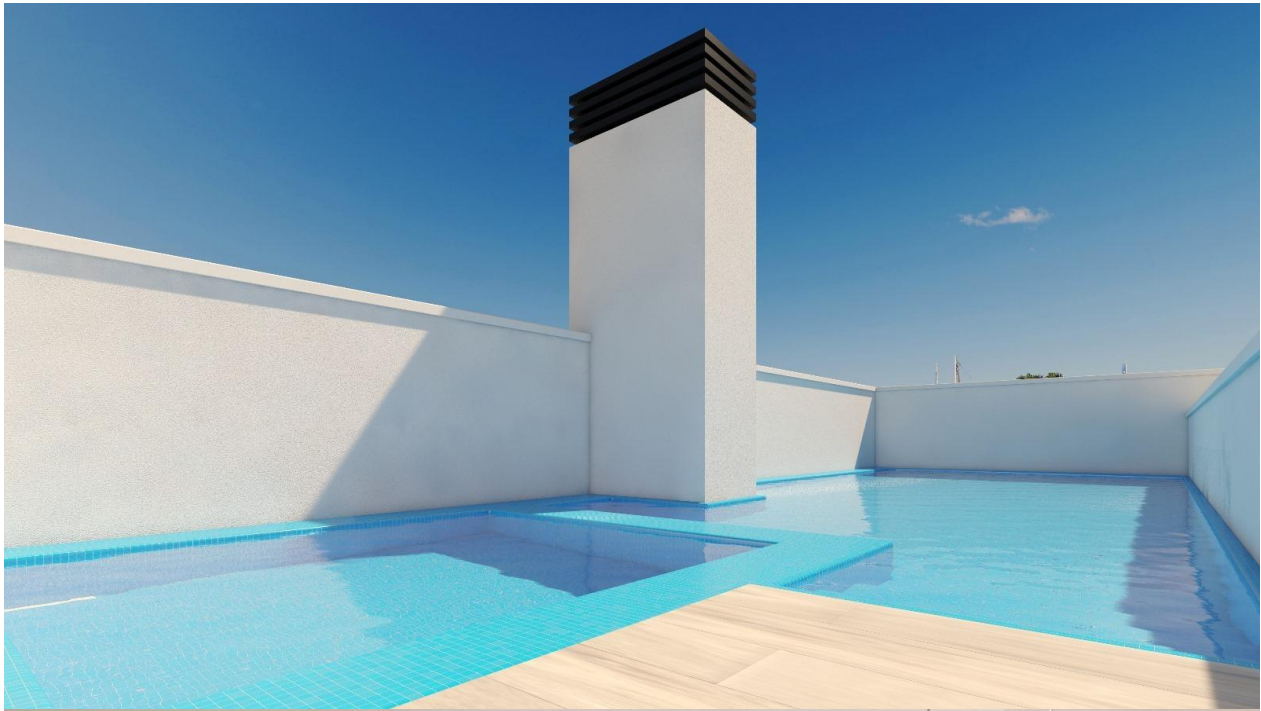
- Central airconditioning

**EXTRA**

- Lift



















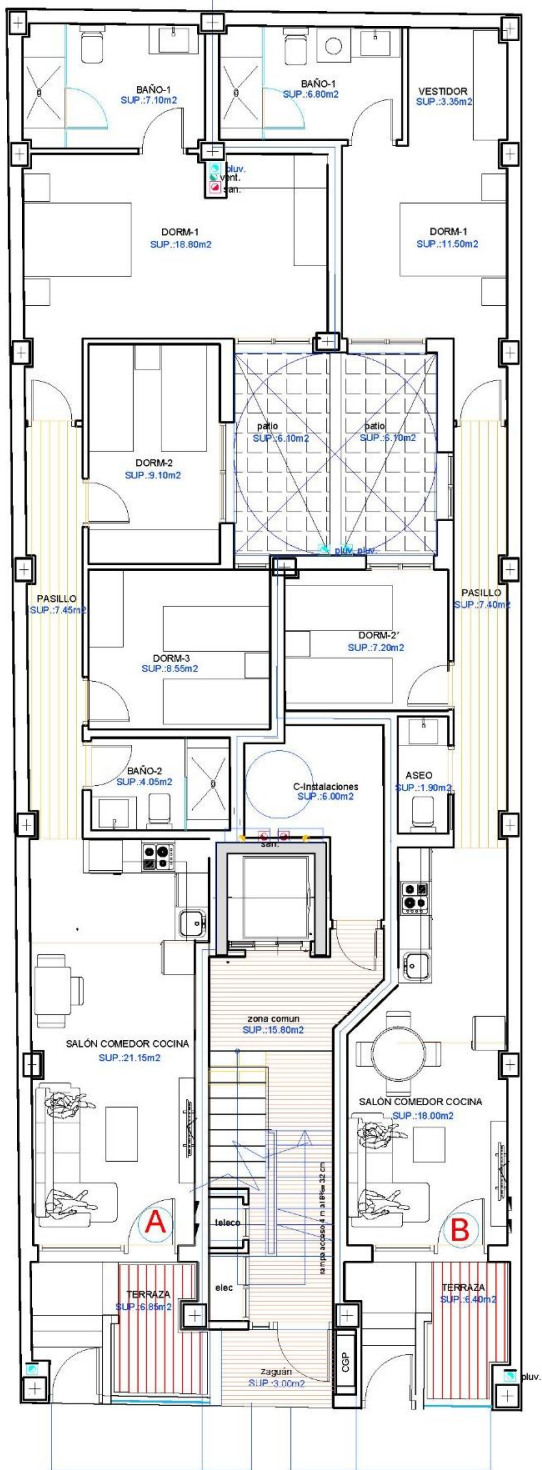




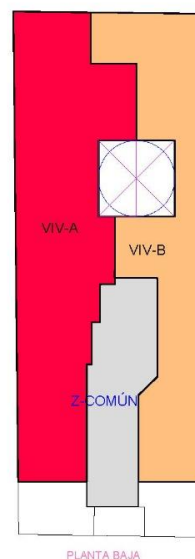








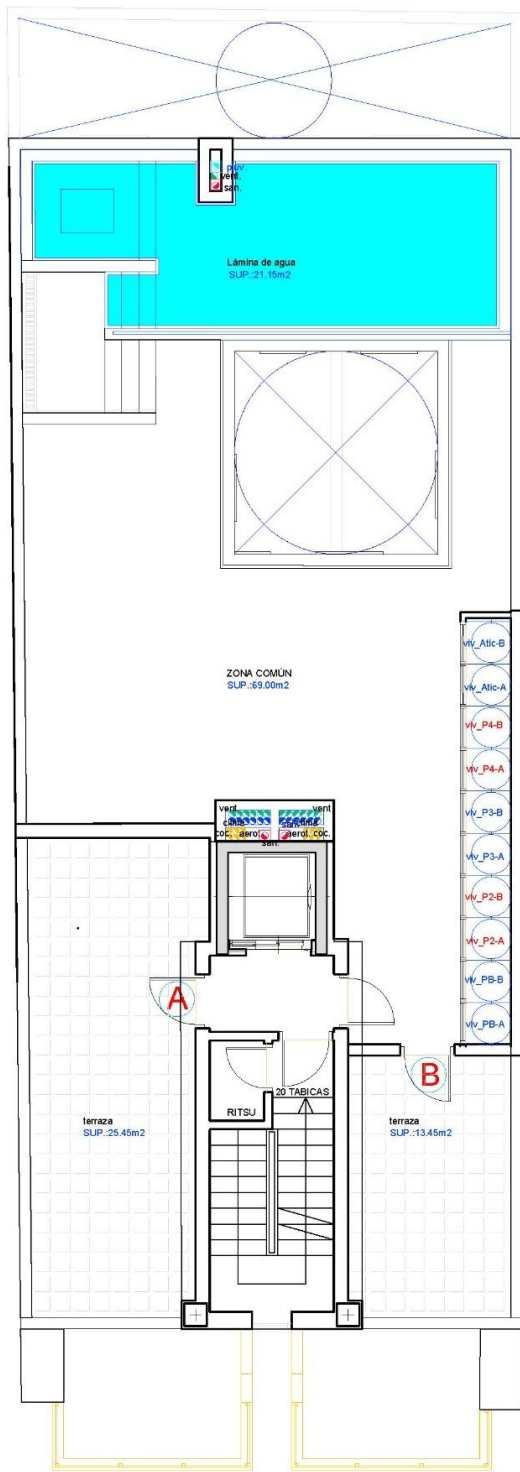
CUADRO DE SUPERFICIES		
SUPERFICIE VIVIENDA TIPO (PLANTA BAJA)		
	VIV-A	VIV-B
SALON COMEDOR COCINA	21,15 m <sup>2</sup>	18,00 m <sup>2</sup>
PASILLO	7,45 m <sup>2</sup>	7,40 m <sup>2</sup>
BAÑO-1	7,10 m <sup>2</sup>	6,80 m <sup>2</sup>
VESTIDOR	0,00 m <sup>2</sup>	3,35 m <sup>2</sup>
DORMITORIO-1	18,80 m <sup>2</sup>	11,50 m <sup>2</sup>
DORMITORIO-2	9,10 m <sup>2</sup>	7,20 m <sup>2</sup>
DORMITORIO-3	8,55 m <sup>2</sup>	0,00 m <sup>2</sup>
BAÑO-2	4,05 m <sup>2</sup>	1,90 m <sup>2</sup>
SUP. GALERIA/PATIO	6,10 m <sup>2</sup>	6,10 m <sup>2</sup>
SUP. TERRAZA-1	6,85 m <sup>2</sup>	6,40 m <sup>2</sup>
SUP. TERRAZA-2	0,00 m <sup>2</sup>	0,00 m <sup>2</sup>
<b>SUP. UTIL VIVIENDA</b>	<b>89,15 m<sup>2</sup></b>	<b>68,65 m<sup>2</sup></b>
<b>SUP. CONSTR. VIVIENDA</b> (sin E.Comunes, terrazas 100%)	<b>96,00 m<sup>2</sup></b>	<b>73,30 m<sup>2</sup></b>
<b>SUP. CONSTRUIDA COMUNES</b>	<b>13,15 m<sup>2</sup></b>	<b>9,68 m<sup>2</sup></b>
<b>SUPERFVIE CONSTRUIDA TOTAL</b>	<b>109,15 m<sup>2</sup></b>	<b>82,98 m<sup>2</sup></b>



PLANTA BAJA

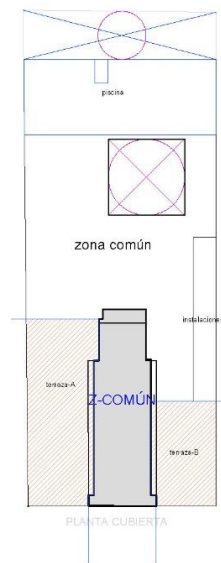
## PLANTA BAJA





PLANTA CUBIERTA

CUADRO DE SUPERFICIES SUPERFICIE VIVIENDA TIPO (ATICO)		
	VIV-A	VIV-B
SALON COMEDOR	24,70 m2	24,70 m2
PASILLO	6,90 m2	7,50 m2
BAÑO-1	3,60 m2	3,60 m2
DORMITORIO-1	13,35 m2	10,75 m2
DORMITORIO-2	7,10 m2	8,20 m2
DORMITORIO-3	9,10 m2	0,00 m2
BAÑO-2	4,85 m2	4,40 m2
SUP. GALERIA/PATIO	0,00 m2	0,00 m2
SUP. TERRAZA-1	8,05 m2	8,10 m2
SUP. TERRAZA-2	25,45 m2	13,45 m2
<b>SUP. ÚTIL VIVIENDA</b>	<b>103,10 m2</b>	<b>80,70 m2</b>
<b>SUP. CONSTR. VIVIENDA (sin E.Comunes, terrazas 100%)</b>	<b>116,73 m2</b>	<b>103,08 m2</b>
<b>SUP. CONSTRUIDA COMUNES</b>	<b>11,89 m2</b>	<b>10,31 m2</b>
<b>SUPERFVIE CONSTRUIDA TOTAL</b>	<b>128,62 m2</b>	<b>113,39 m2</b>



PLANTA CUBIERTAS











***"OUR EXPERIENCE IS YOUR GUARANTEE"***