



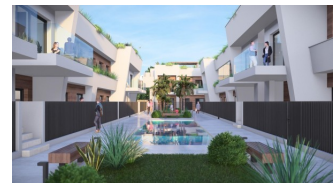
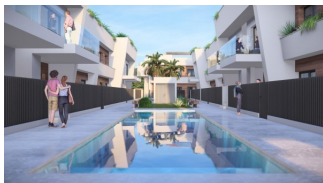
REF: # 12652

TORRE PACHECO (TORREPACHECO)



INFO

PRICE:	240.000 €
PROPERTY TYPE:	Apartment
CITY:	Torre Pacheco (Torrepacheco)
BEDROOMS:	3
Bathrooms:	2
Build (m2):	88
Plot (m2):	-
Terrace (m2):	95
Year:	-
Floor:	-
Old price	-



DESCRIPTION

New Construction Homes in Torre-Pacheco, Costa Cálida Modern Bungalows with Exceptional Features Discover a new residential complex in Torre-Pacheco, offering 24 stylish bungalows with 2 or 3 bedrooms. Choose between ground-floor homes with spacious terraces or first-floor units boasting private terraces and solariums. Each solarium includes a pergola, a barbecue area, and reinforced roofing, perfect for installing a jacuzzi. All homes come with a designated parking space and fully installed air conditioning, ensuring comfort year-round. Prime Location in Torre-Pacheco Nestled in the heart of Torre-Pacheco, this development enjoys proximity to essential amenities, including supermarkets, shops, bars, and restaurants. The vibrant town center, with its charming Spanish ambiance, is within walking distance. For beach lovers, the stunning Mar Menor is just a 10-minute drive away, offering golden sands and crystal-clear waters. Enjoy Outstanding Community Amenities The complex features a beautifully landscaped community area with lush gardens and a sparkling pool, providing a serene retreat to relax and unwind. The area's sunny climate, averaging 320 days of sunshine annually, complements these outdoor spaces

perfectly. Surrounded by Award-Winning Golf Courses Torre-Pacheco is a golfer's paradise, surrounded by some of the most renowned golf courses in Spain. These courses are just a short drive away, making it an ideal location for golf enthusiasts. Strategic Connections to Key Destinations Murcia International Airport: 20 km (approximately 20 minutes by car). Train Station: Only 700 meters away, offering convenient travel options. Shopping Centers: Several large shopping complexes within a 15 km radius. Beaches: The beautiful Costa Cálida beaches are a mere 10 km away. Ports and Marinas: The closest marina is around 12 km away, perfect for boating and water sports. A Healthier Lifestyle Awaits The Costa Cálida region is renowned for its exceptional quality of life. With low humidity, clean air, and a subtropical climate, this area is one of the healthiest in Spain. The perfect combination of natural beauty, sea breezes, and abundant sunlight makes Torre-Pacheco a highly sought-after destination. Act Now to Secure Your Dream Home Don't miss this opportunity to own a modern home in a prime location. Contact us today to learn more about this incredible development or to schedule a viewing!



VIEWS

- Panoramic views

AIRCONDITIONING

- Central airconditioning

PARKING

Parking no Cars: 1

**GARDEN AND
TERRACES**

- Fenced
- BBQ/grill













SUPERFICIES ÚTILES

Salón-Comedor-Cocina	30,75 m²
Dormitorio 1	10,00 m²
Dormitorio 2	10,00 m²
Dormitorio 3	13,20 m²
Baño 1	3,80 m²
Baño 2	4,00 m²
Distribuidor	4,10 m²

PLANTA PRIMERA B

Lavadero	2,30 m²
TOTAL	76,15 m²
Terraza	7,00 m²
Solarium	88,90 m²

Vivienda P1-B



Solarium P1-B



SUPERFICIES ÚTILES

PLANTA BAJA

PB-A	78,72 m²
PB-B	68,70 m²
PB-C	67,05 m²
PB-D	67,05 m²
PB-E	67,05 m²
PB-F	63,00 m²
PB-G	78,72 m²
PB-H	68,70 m²
PB-I	67,05 m²
PB-J	67,05 m²
PB-K	67,05 m²
PB-L	63,30 m²

Vestuario hombres	4,40 m²
Vestuario mujeres	8,60 m²
RITU	1,30 m²
Instalaciones	2,35 m²
TOTAL	640,09 m²
Urbanización parcela	512,15 m²
Piscina	54,00 m²
TOTAL Sup. Construida	1.139,79 m²



PLANTA BAJA

"OUR EXPERIENCE IS YOUR GUARANTEE"