



REF: # 12341

ROJALES (DONA PEPA)



#### INFO

PRICE:	929.305 €
PROPERTY TYPE:	Villa
CITY:	Rojales (Dona Pepa)
BEDROOMS:	3
Bathrooms:	3
Build ( m2 ):	158
Plot ( m2 ):	528
Terrace ( m2 ):	-
Year:	-
Floor:	-
Old price	-



#### DESCRIPTION

**NEW BUILD VILLA IN CIUDAD QUESADA** New Build modern style villa located in the urbanisation Doña Pepa – Ciudad Quesada. Consisting of living-dining room with open kitchen, 3 bedrooms and 3 bathrooms, on two floors. Also with terrace, solarium, private garden with the swimming pool and parking space. With all the necessary services at your fingertips: supermarkets, golf courses, restaurants, health centres. Located on a pleasant south-facing hillside in the Alicante province, Ciudad Quesada offers a great and exciting quality of life in the sun. The place has a wonderful location next to La Marquesa golf course. To enjoy the beautiful beaches of Guardamar del Segura only takes ten minutes by car. It is also partially surrounded by the lagoon of La Mata, a space of biodiversity and nature with 700 hectares. The city has developed rapidly over the past two decades, with a wide spectrum of properties to suit all needs and budgets, including detached villas, smaller gated communities, bungalows, and apartments. The amenities available within Quesada have also improved over time, so it is now home to a wide variety of bars, restaurants, shops, and supermarkets, along with several banks, dental clinics, pharmacies, hair salons, newsagents, tobacconists,

and a new Medical Canter located in the Doña Pepa urbanization Only 10 minutes from the best beaches of the Costa Blanca and 30 minutes from Alicante International Airport.



**VIEWS**

- Panoramic views

**GARDEN AND  
TERRACES**

- Private garden

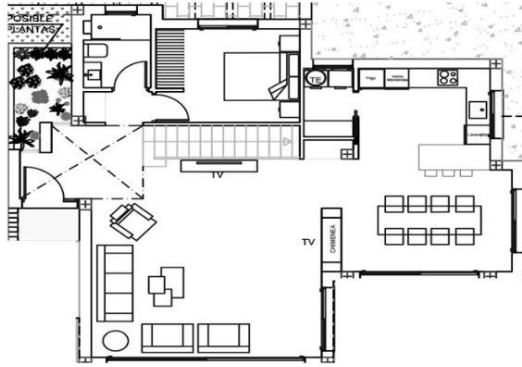




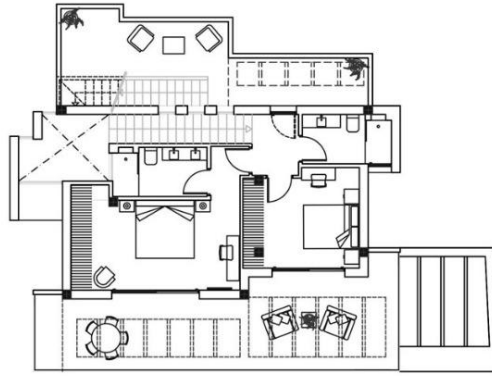


Artistic image free of contractual nature

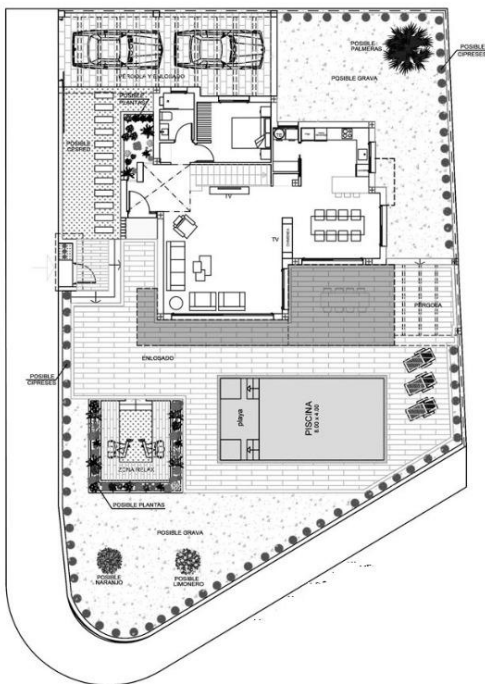
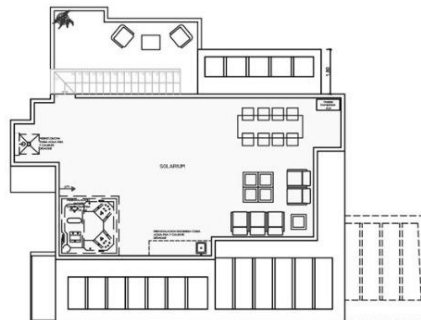
GROUND FLOOR



FIRST FLOOR



SOLARIUM



3 BEDROOMS / 3 BATHROOMS

TOTAL SURFACE	315,97 M2
PROPERTY SURFACE	158,47 M2
TERRACES	157,5 M2
SOLARIUM	63,85 M2
POOL METERS	8x4 M
PLOT	528,83 M2
PRIVATE PARKING	





***"OUR EXPERIENCE IS YOUR GUARANTEE"***