



REF: # 12271

PILAR DE LA HORADADA



#### INFO

**PRICE:** 315.900 €

**PROPERTY TYPE:** Townhouse

**CITY:** Pilar De La Horadada

**BEDROOMS:** 2

**Bathrooms:** 2

**Build ( m2 ):** 69

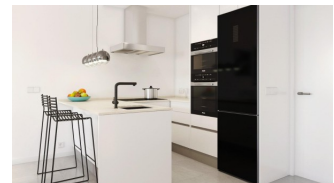
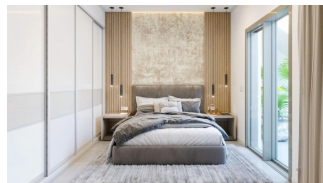
**Plot ( m2 ):** 139

**Terrace ( m2 ):** 73

**Year:** -

**Floor:** -

**Old price** -



#### DESCRIPTION

**NEW BUILD TOWNHOUSES IN PILAR DE LA HORADADA** New Build townhouses located in Pilar de la Horadada. Townhouses build on 1 floor and has private solarium, 2 bedrooms, 2 bathrooms, open plan kitchen with the living room, garden with parking space. An options for a private pool at an extra cost. Properties located a few meters from all services and the centre. Pilar de la Horadada is a typical Spanish village in the most southern part of the Costa Blanca. The large main street has supermarkets, lots of shops, restaurants and bars and some lovely squares. The beautiful beaches of Torre de la Horadada and Mil Palmeras with fine sand promenade is just 5 minutes away. In Pilar de la Horadada there is also a well-developed cycling and walking path network, and there is also a large offer of various sports activities. Lo Romero 18 hole golf course is just a short drive from town. The airports of Corvera (Murcia) and Alicante are respectively 40 and 55 minutes away.

#### ENERGETIC CERTIFIED



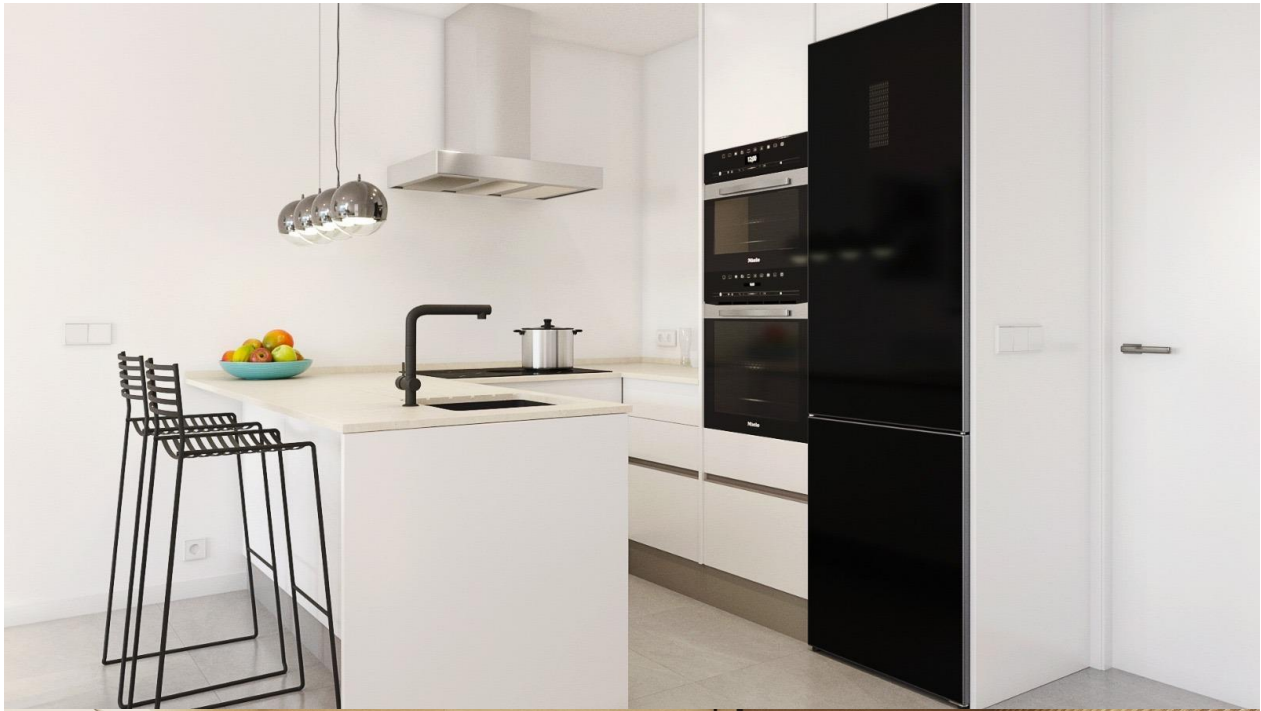
<b>STYLE</b> <ul style="list-style-type: none"><li>• Modern</li><li>• Contemporary</li></ul>	<b>VIEWS</b> <ul style="list-style-type: none"><li>• Panoramic views</li></ul>	<b>AIRCONDITIONING</b> <ul style="list-style-type: none"><li>• Central airconditioning</li></ul>	<b>DISTANCE TO :</b> <div>Airport: 60 Km</div>
<b>ORIENTATION</b> <div>South west</div>	<b>FURNITURE</b> <ul style="list-style-type: none"><li>• Not furnished</li></ul>	<b>PARKING</b> <div>Parking no Cars: 1</div>	<b>MAIN LIVING AREA</b> <ul style="list-style-type: none"><li>• Bathroom en-suite</li></ul>
<b>FLOORING</b> <ul style="list-style-type: none"><li>• Tile floors</li></ul>	<b>KITCHEN</b> <ul style="list-style-type: none"><li>• Open kitchen</li><li>• Equipped kitchen</li><li>• Granite countertop</li></ul>	<b>GARDEN AND TERRACES</b> <ul style="list-style-type: none"><li>• Open terrace</li><li>• Exterior lights</li><li>• Landscaped</li><li>• Fenced</li><li>• Stone walls</li><li>• Private garden</li></ul>	<b>HEATING</b> <ul style="list-style-type: none"><li>• Central electric heating</li></ul>
<b>EXTRA</b> <ul style="list-style-type: none"><li>• Built in wardrobes</li><li>• Reinforced door</li><li>• Double glazed windows</li></ul>			

## PROPERTY GALLERY











## Plot nº13

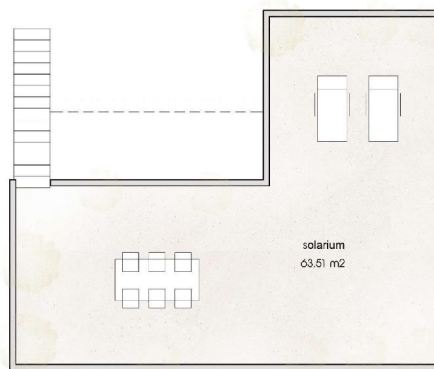


PB / GROUND FL.



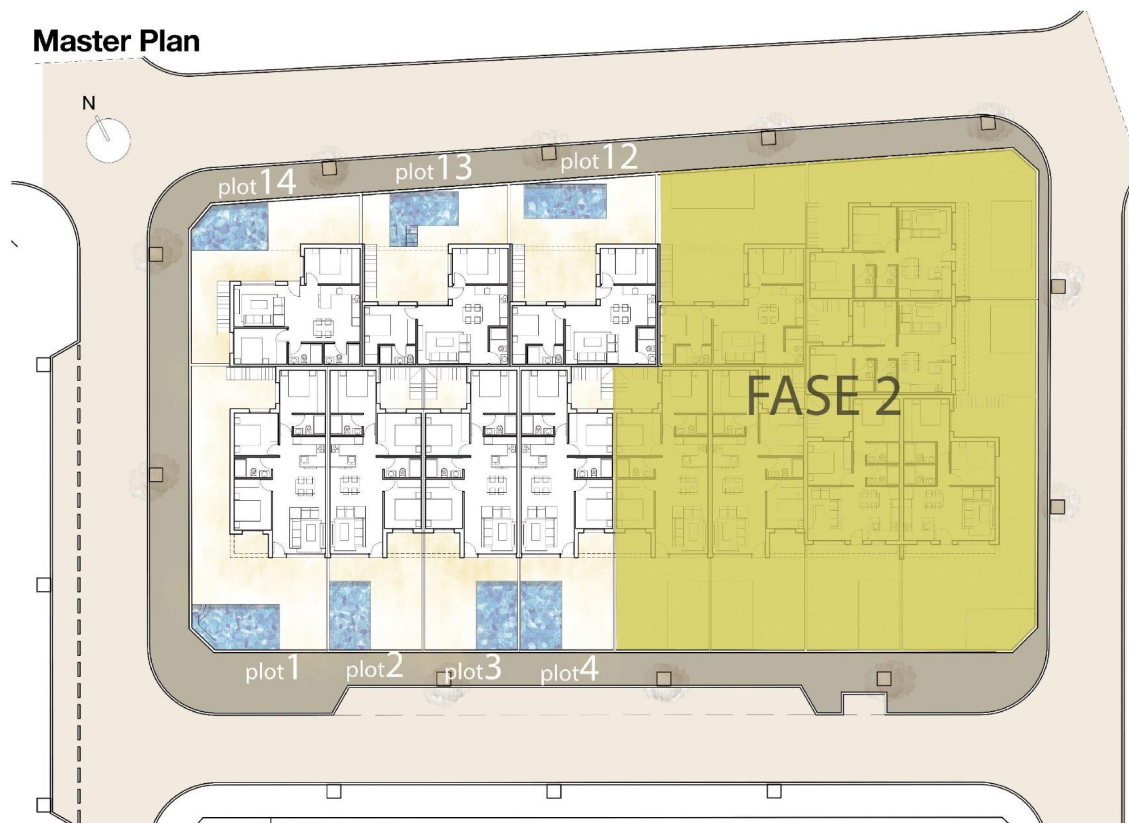
### VILLA Nº 13 PLOT 13 139,80 m2

SUP. CONSTR. VIV.P.B.....	69,30 m2
SUP. CONSTR. Porch (50%).....	5,00 m2
SUP. CONST.TOTAL .....	74,30 m2
SUP. ÚTIL SOLARIUM .....	63,51 m2
SUP. TOTAL VIV .....	137,81 m2



P1 / FIRST FL.

## Master Plan









***"OUR EXPERIENCE IS YOUR GUARANTEE"***