



REF: # 12202

PILAR DE LA HORADADA



#### INFO

**PRICE:** 259.900 €

**PROPERTY TYPE:** Townhouse

**CITY:** Pilar De La Horadada

**BEDROOMS:** 2

**Bathrooms:** 2

**Build ( m2 ):** 77

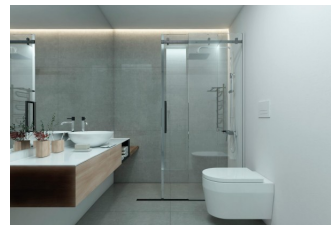
**Plot ( m2 ):** 54

**Terrace ( m2 ):** 50

**Year:** -

**Floor:** -

**Old price** -



#### DESCRIPTION

NEW BUILD TOWNHOUSES IN PILAR DE LA HORADADA - close to all amenities! This 77m2 Townhouse consists of 2 bedrooms, 2 bathrooms open plan kitchen with the living area, build-in wardrobes, large solarium's, terraces and gardens with off road parking space. Excellent location, 5 minutes from the sandy beaches and most prestigious 18-hole Lo Romero golf course. Pilar de la Horadada is a typical Spanish village in the most southern part of the Costa Blanca. The large main street has supermarkets, lots of shops, restaurants and bars and some lovely squares. The beautiful beaches of Torre de la Horadada and Mil Palmeras with fine sand promenade is just 5 minutes away. The airports of Corvera (Murcia) and Alicante are respectively 40 and 55 minutes away.

#### ENERGETIC CERTIFIED



<b>STYLE</b> <ul style="list-style-type: none"><li>• Modern</li><li>• Contemporary</li></ul>	<b>VIEWS</b> <ul style="list-style-type: none"><li>• Panoramic views</li></ul>	<b>AIRCONDITIONING</b> <ul style="list-style-type: none"><li>• Central airconditioning</li></ul>	<b>DISTANCE TO :</b> Beach : 7 Km Airport: 40 Km
<b>FURNITURE</b> <ul style="list-style-type: none"><li>• Not furnished</li></ul>	<b>PARKING</b> Parking no Cars: 1	<b>FLOORING</b> <ul style="list-style-type: none"><li>• Tile floors</li><li>• Stone floors</li></ul>	<b>KITCHEN</b> <ul style="list-style-type: none"><li>• Open kitchen</li></ul>
<b>GARDEN AND TERRACES</b> <ul style="list-style-type: none"><li>• Fenced</li><li>• Private garden</li></ul>	<b>EXTRA</b> <ul style="list-style-type: none"><li>• Built in wardrobes</li><li>• Alarm</li><li>• Reinforced door</li><li>• Double glazed windows</li></ul>		















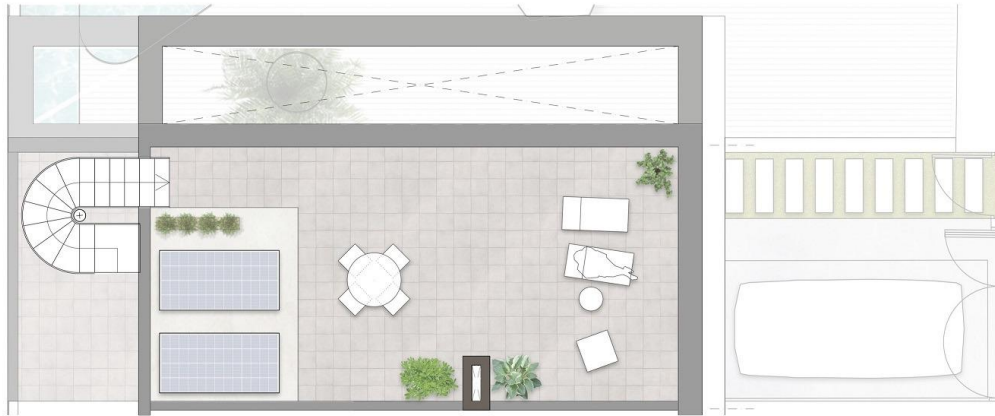


#### VIVIENDA TIPO 1A - Nº 27

SUPERFICIES CONSTRUIDAS (INCLUIDO PORCHE CUBIERTO)	87,71 m <sup>2</sup>
JARDÍN, TERRAZA Y SOLARIUM	94,79 m <sup>2</sup>







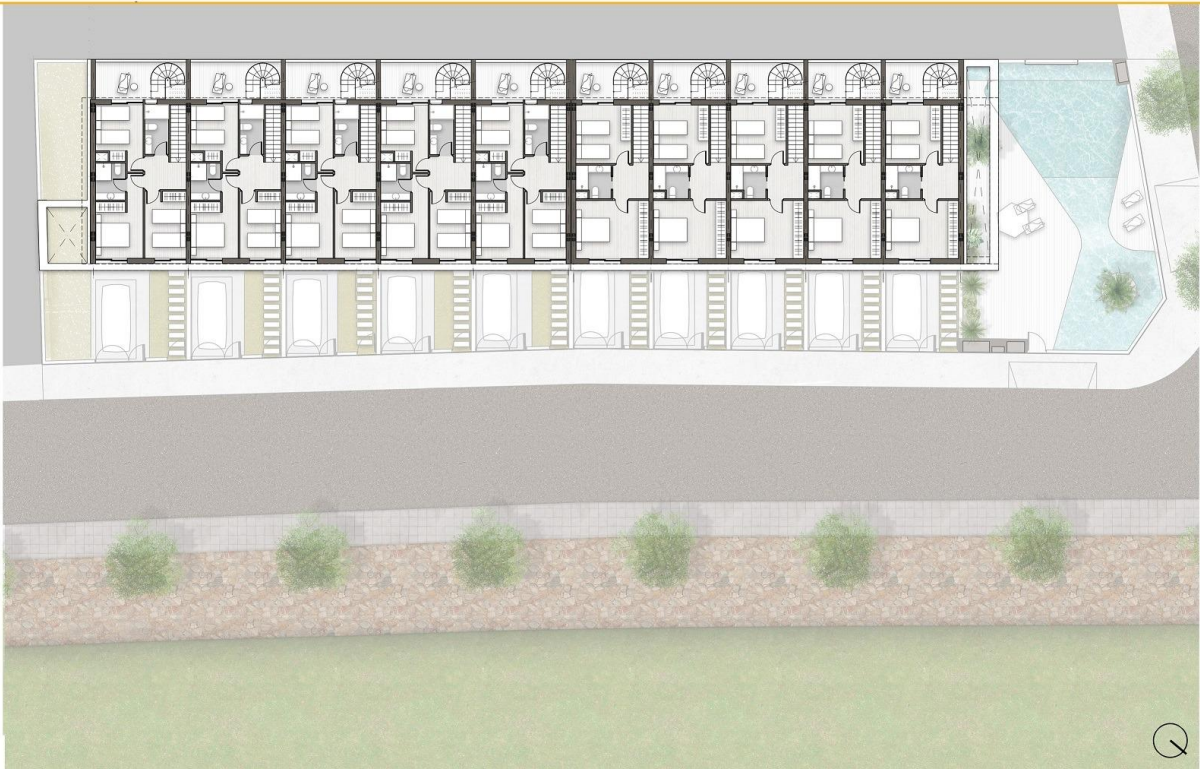
#### VIVIENDA TIPO 1A - Nº 27

SUPERFICIES CONSTRUIDAS (INCLUIDO PORCHE CUBIERTO) ..... 87,71 m<sup>2</sup>  
 JARDÍN, TERRAZA Y SOLARIUM ..... 94,79 m<sup>2</sup>



PLANTA BAJA \_ GENERAL





PLANTA PRIMERA \_ GENERAL











***"OUR EXPERIENCE IS YOUR GUARANTEE"***