



REF: # 11678

FINESTRAT



INFO

PRICE:	1.050.000 €
PROPERTY TYPE:	Villa
CITY:	Finestrat
BEDROOMS:	4
Bathrooms:	4
Build (m2):	315
Plot (m2):	620
Terrace (m2):	-
Year:	-
Floor:	-
Old price	-



DESCRIPTION

NEW BUILD VILLAS IN FINESTRAT New Build Modern villas in Finestrat. Villas with 4 bedrooms and 4 bathrooms, open plan kitchen with lounge area, terrace with magnificent views over Benidorm, private garden with swimming pool and parking space. The lateral garden, adorned with cacti and white gravel, connects the Access Level 1 with the main floor (Level O). The use of natural grass in the rest of the terrain is presented as an additional feature through a meticulously designed landscaping project. Each level is accentuated with a material that enhances its essence. Level O is clad in natural limestone, providing support to the entire structure. Level 1, with its monolayer finish and wooden shutters, safeguards the most intimate part of the residence. Finally, Level 2, where the master bedroom is located, opens up to a spacious terrace and is finished with textured monolayer in a warm tone. The Mediterranean aesthetic is achieved through a perfect fusion of tradition, modern architecture, and nature. Finestrat located in the Marina Baixa region of the Costa Blanca, close to neighbouring Benidorm and about 40 kilometres from the city of Alicante and the international airport. The village is situated on the mountainside of Puig Campana and offers beautiful views of the mountains, the coast and the Mediterranean Sea.

Benidorm is just a five-minute drive from the properties and offers all the services you would need including shops, bars, restaurants, supermarkets, banks, pharmacies and several private international schools.



VIEWS

- Panoramic views

**GARDEN AND
TERRACES**

- Private garden



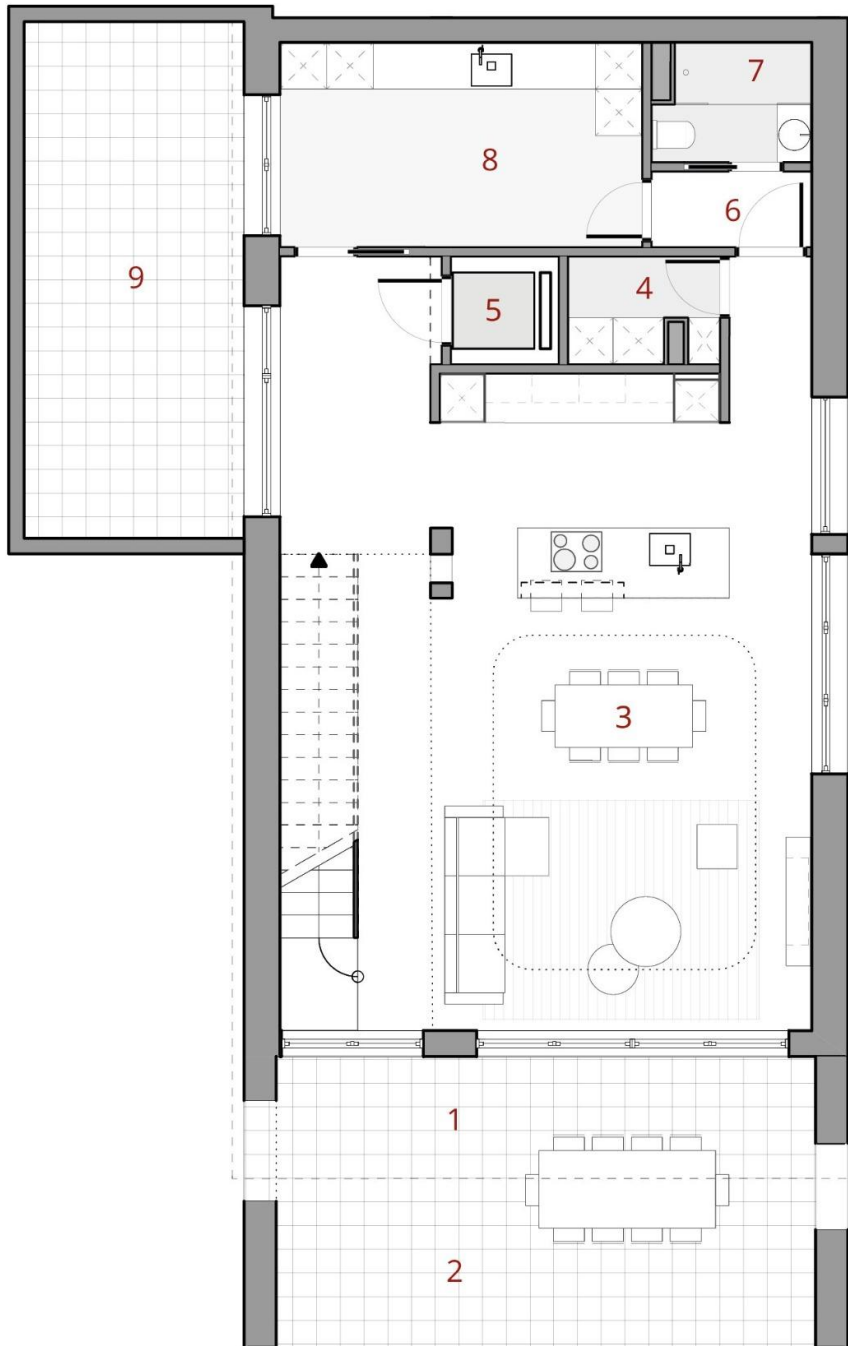






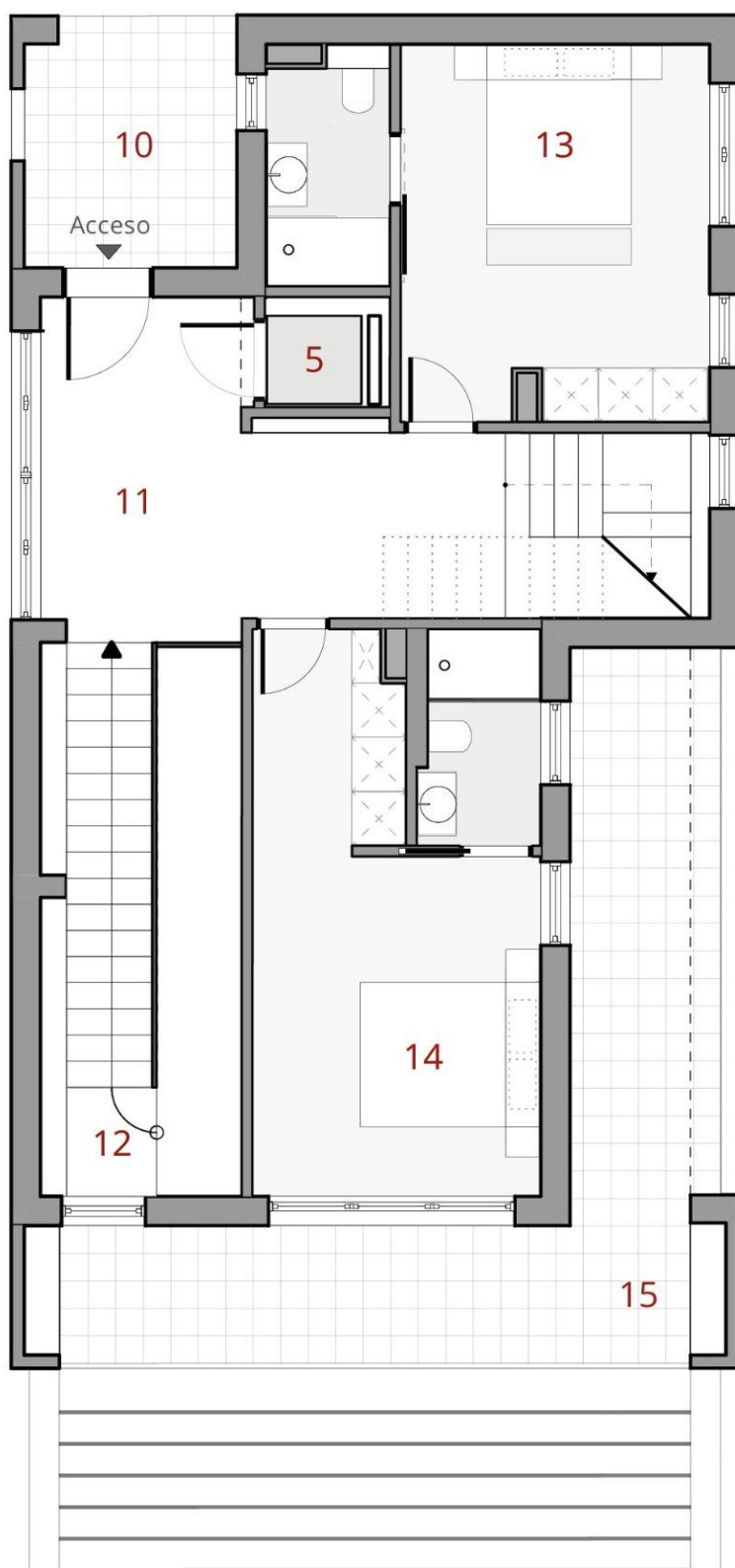






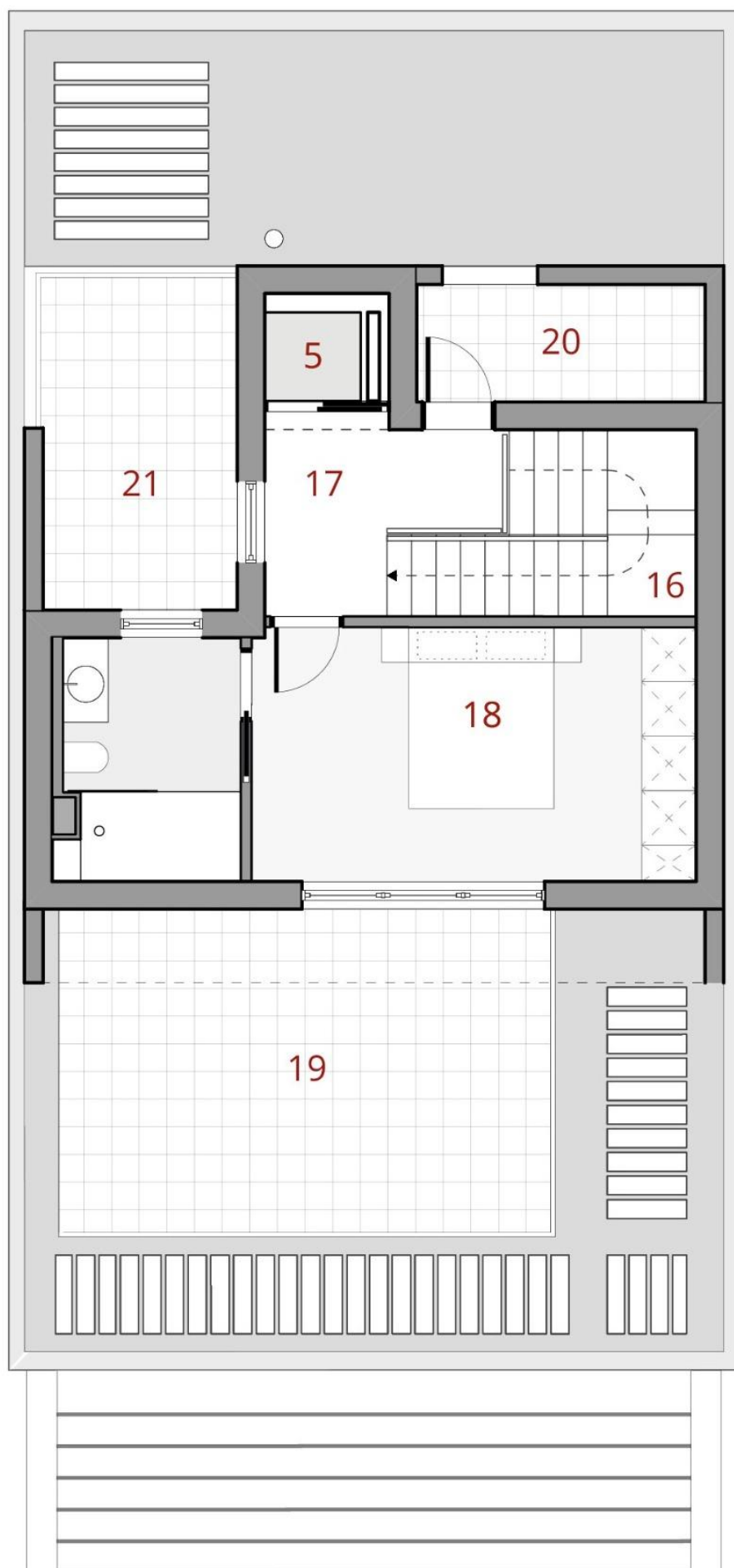
GROUND FLOOR HOUSE BUILT SURFACE
(TERRACES ARE NOT INCLUDED)

97,40 m²



FIRST FLOOR HOUSE BUILT SURFACE
(TERRACES ARE NOT INCLUDED)

72,63 m²



SECOND FLOOR HOUSE BUILT SURFACE
(TERRACES ARE NOT INCLUDED)

37,69 m²