



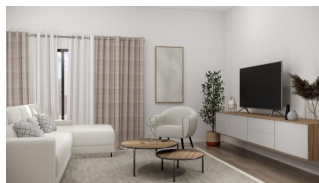
REF: # 11669

TORREVIEJA



#### INFO

PRICE:	179.900 €
PROPERTY TYPE:	Apartment
CITY:	Torrevieja
BEDROOMS:	2
Bathrooms:	2
Build ( m2 ):	89
Plot ( m2 ):	-
Terrace ( m2 ):	-
Year:	-
Floor:	-
Old price	-



#### DESCRIPTION

NEW BUILD GROUND FLOOR APARTMENT IN LA MATA, TORREVIEJA - only 250m from the beach!! This lovely 89m2 ground floor apartment in a superb location is of modern design with lots of natural light. The apartment consists of 2 bedrooms, 2 bathrooms, open Kitchen lounge & dining area with access to the private pool on the sun terrace and only 250 meters from the beach of La Mata. La Mata located near Spanish town Torrevieja in the province of Alicante, on the Costa Blanca. It is known for its typically Mediterranean climate and coastline. It has boardwalks with resorts along its sandy beaches. La Mata Beach is the longest beach in Torrevieja and is surrounded by urbanisations. It is close to the Molino del Agua Park. The small Museum of the Sea and Salt houses exhibitions on the fishing and salt history of the city. In the interior, the Lagunas de La Mata-Torrevieja Natural Park has trails and two salty lagoons, one pink and the other green. Alicante airport located 40 minutes away and Murcia airport about 1 hour away.

#### ENERGETIC CERTIFIED





STYLE	VIEWS	AIRCONDITIONING	DISTANCE TO :
<ul style="list-style-type: none"><li>• Modern</li></ul>	<ul style="list-style-type: none"><li>• Panoramic views</li></ul>	<ul style="list-style-type: none"><li>• Central airconditioning</li></ul>	Beach : 200 m Airport: 40 Km Town center : 6 Km
FURNITURE	FLOARING	KITCHEN	EXTRA
<ul style="list-style-type: none"><li>• Not furnished</li></ul>	<ul style="list-style-type: none"><li>• Tile floors</li></ul>	<ul style="list-style-type: none"><li>• Open kitchen</li></ul>	<ul style="list-style-type: none"><li>• Built in wardrobes</li><li>• Double glazed windows</li></ul>







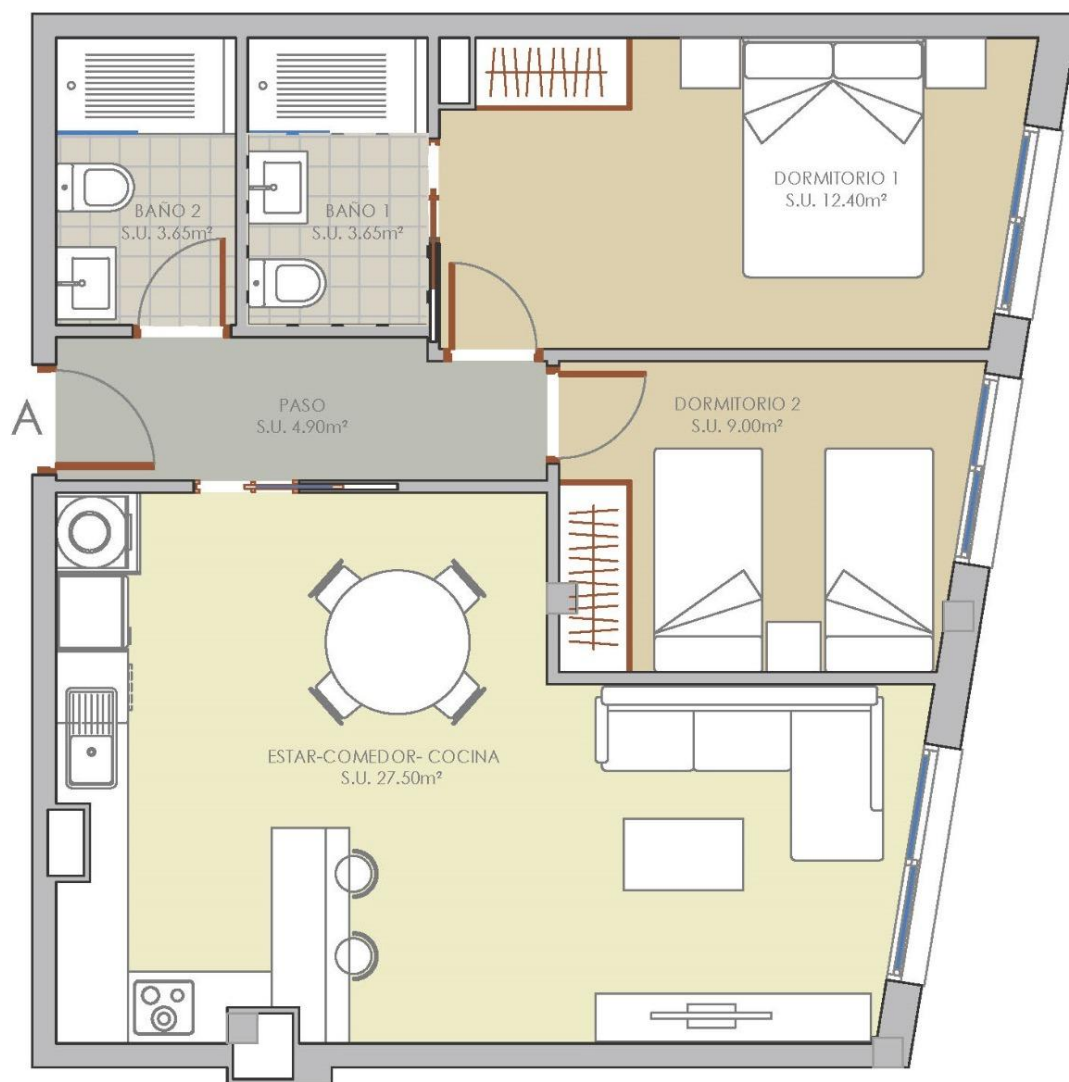




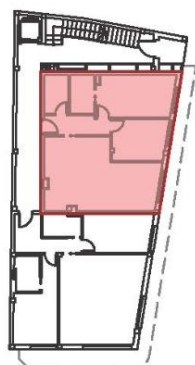








PLANTA BAJA - A



SUPERFICIE CONSTRUIDA VIVIENDA (m <sup>2</sup> )	
PLANTA BAJA	A
VIVIENDA CERRADA	68,20
TERRAZA CUBIERTA	0,00
TERRAZA DESCUBIERTA	0,00
PARTE PROPORCIONAL ZONA COMÚN	21,12
<b>CONSTRUIDA TOTAL VIVIENDA</b>	<b>89,32</b>















***"OUR EXPERIENCE IS YOUR GUARANTEE"***