



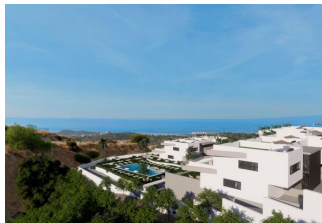
REF: # 11661

FINESTRAT



INFO

PRICE:	409.900 €
PROPERTY TYPE:	Townhouse
CITY:	Finestrat
BEDROOMS:	3
Bathrooms:	2
Build (m2):	96
Plot (m2):	-
Terrace (m2):	-
Year:	-
Floor:	-
Old price	-



DESCRIPTION

NEW BUILD RESIDENTIAL COMPLEX IN FINESTRAT New Build unique and exclusive high standing residential complex in Balcon de Finestrat. This complex of modern bungalows with 2 and 3 bedrooms, all with 2 bathrooms, open plan kitchen with the living and dining room. Top floor bungalows with private solarium and ground floor bungalows with private garden and possibility of private pool at an extra cost. Properties has loads of natural light and designer island in the kitchen. Lift in all homes. Sustainable construction with energy certificate A. Each property has private parking. Indoor Fitness Gym. Bio-healthy area for sports. Communal swimming pool. Indoor and outdoor LED lighting pack. High quality materials and brands. The properties have access to a large swimming pool and enjoy one of the best locations on the Costa Blanca. It is a great opportunity and privilege to be able to live with this environment of golf and beach, close to all amenities of all services considered one of the best places to invest. Finestrat located in the Marina Baixa region of the Costa Blanca. Benidorm is just a five-minute drive from the properties and offers all the services you would need including shops, bars, restaurants, supermarkets, banks, pharmacies

and several private international schools. Close to the beaches of Levante, Poniente and Cala de Finestrat, with more than 6km in length that are among the best in Europe awarded by the European Union with Blue Flags. All leisure services such as the theme parks of Aqua Natura, Terra Mítica, Terra Natura, Aqualandia and Mundomar, Sierra Cortina and Villaitana Golf courses, hiking and climbing in Puig Campana an incomparable natural setting or enjoy of nautical sports. Distance to the sea 4 km, to the airport 26 km and to the golf 1km. Complex located 40 minutes from Alicante airport.



VIEWS

- Panoramic views

PROPERTY GALLERY





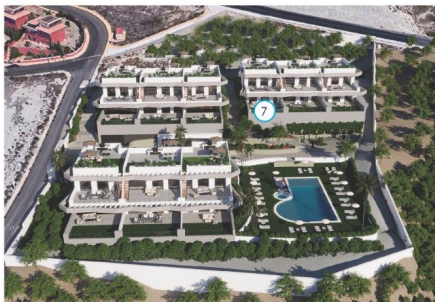
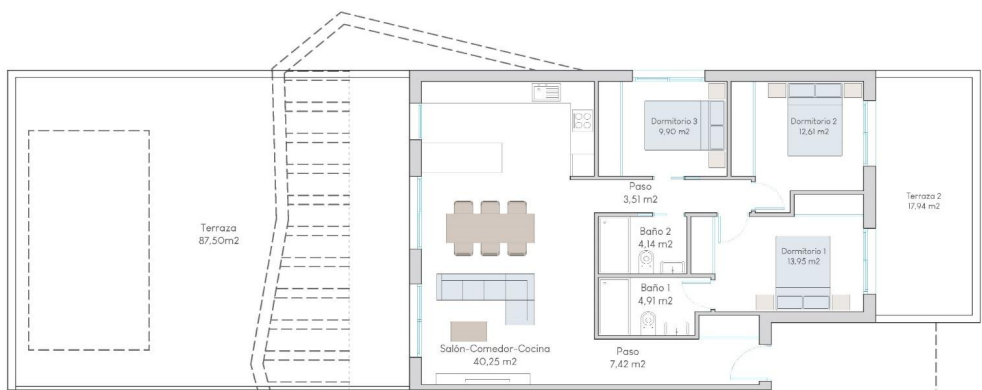








PLANTA BAJA



SUPERFICIES	
Planta Baja	96,69 m ²
Terraza 1	87,50 m ²
Terraza 2	17,94 m ²
Total	202,13 m ²

LAS DIMENSIONES Y LAS SUPERFICIES QUE APARECEN EN ESTE DOCUMENTO SON APROXIMADAS Y PODRÁN SER OBJETO DE MODIFICACIÓN DURANTE LA REDACCIÓN DE LOS PROYECTOS BÁSICO Y DE EJECUCIÓN

"OUR EXPERIENCE IS YOUR GUARANTEE"