



REF: # 11560

ALICANTE



INFO

PRICE: 450.000 €

PROPERTY TYPE: Penthouse

CITY: Alicante

BEDROOMS: 3

Bathrooms: 2

Build (m2): 89

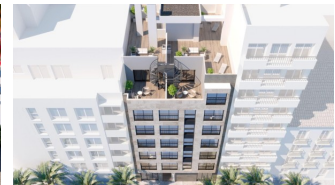
Plot (m2): -

Terrace (m2): -

Year: -

Floor: -

Old price -



DESCRIPTION

NEW BUILD PENTHOUSES IN ALICANTE New Build residential of 28 modern apartments and penthouses with 1, 2, 3 bedrooms located in the city centre of Alicante overlooking the park, within walking distance of the promenade. The complex occupies over 6 floors and is situated next to the commercial area with traditional tapas bars, shops, cafes, banks, central market, train station and many other local amenities. All the homes have luxury finishes, German profile windows, noise reduction and temperature control, fitted wardrobes, lighting, fully equipped kitchens with appliances from leading European manufacturers and bathrooms fully equipped with shower screens. The complex includes: - quality materials - communal salt water swimming pool - Finnish sauna - gymnasium - bicycle parking - public areas The flats are equipped with: - open plan kitchen, fully furnished with all electrical appliances. - Bathrooms with washbasins, mirrors, screens and underfloor heating. - individual hot and cold air-conditioning - fitted wardrobes - high quality windows with electric blinds. Located in the middle of the Costa Blanca, Alicante is one most important tourist destinations in the Spanish east coast. The many golf courses, along with the tranquil waters of the Mediterranean Sea, are part of the appeal of this beautiful harbour city,

which sits at the foot of the Castle of Santa Barbara, a silent witness to the numerous civilisations to have settled here.



VIEWS

- Panoramic views

**GARDEN AND
TERRACES**

- Private garden

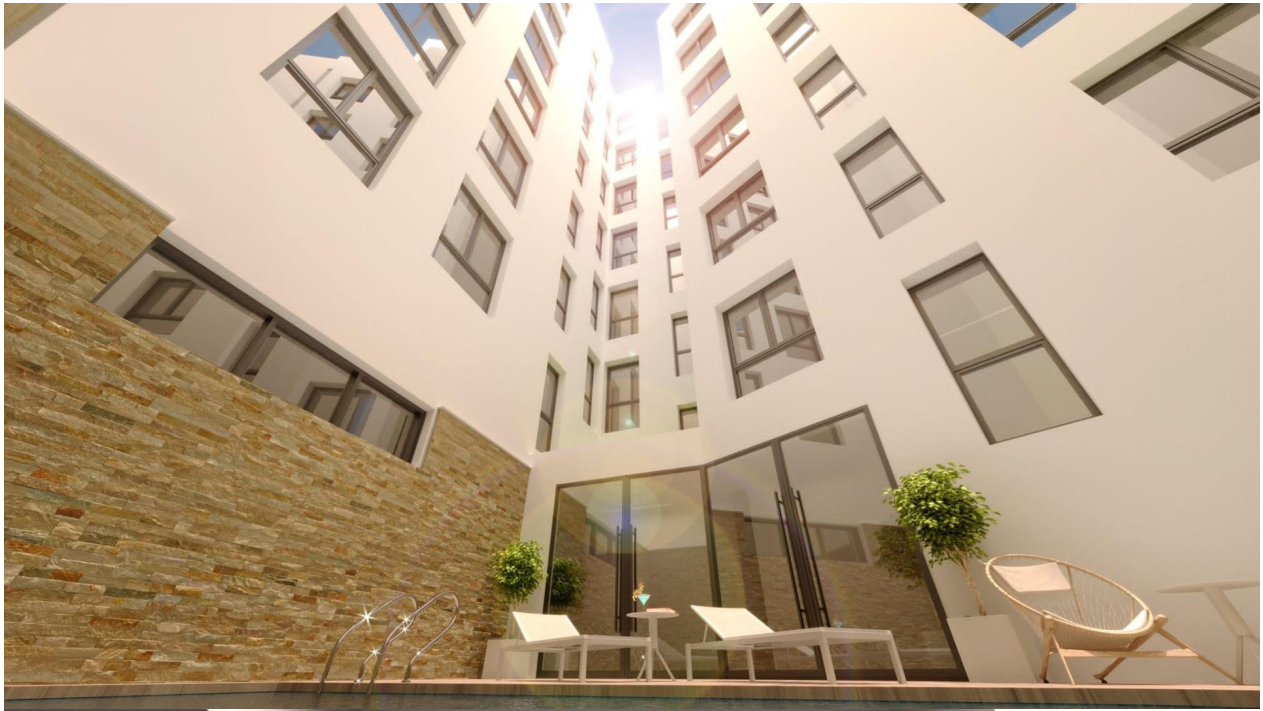
PROPERTY GALLERY









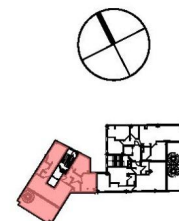






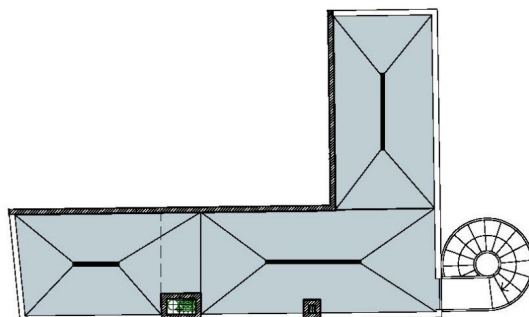
ESCALA GRÁFICA 1:100

SUPERFICIES ÚTILES (VIV. TIPO J)	
Baño 1	3.51 m ²
Baño 2	3.37 m ²
Dormitorio 1	10.32 m ²
Dormitorio 2	10.17 m ²
Dormitorio 3	14.60 m ²
Salón-Comedor-Cocina	26.66 m ²
Vest ^o	5.49 m ²
Total sup. útiles	74.12 m²



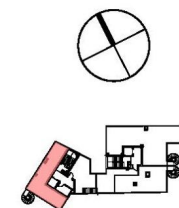
VIVIENDA TIPO J
(PLANTA ÁTICO)

SUPERFICIES CONSTRUIDAS (VIV. J)	
Sup. construida interior (Viv. J)	89.32 m ²
Sup. construida terraza descubierta (Viv. J)	28.14 m ²
Sup. construida solarium (Viv. J)	44.45 m ²
Total sup. cons. privada	161.91 m²
REP.EC. (m2)	21.79 m ²
Total s.cons.priv.+R.EC.	183.70 m²



ESCALA GRÁFICA 1:100

SUPERFICIES ÚTILES (VIV. TIPO J)	
Baño 1	3.51 m ²
Baño 2	3.37 m ²
Dormitorio 1	10.32 m ²
Dormitorio 2	10.17 m ²
Dormitorio 3	14.60 m ²
Salón-Comedor-Cocina	26.66 m ²
Vest ^o	5.49 m ²
Total sup. útiles	74.12 m²



VIVIENDA TIPO J
(SOLARIUM)

SUPERFICIES CONSTRUIDAS (VIV. J)	
Sup. construida interior (Viv. J)	89.32 m ²
Sup. construida terraza descubierta (Viv. J)	28.14 m ²
Sup. construida solarium (Viv. J)	44.45 m ²
Total sup. cons. privada	161.91 m²
REP.EC. (m2)	21.79 m ²
Total s.cons.priv.+R.EC.	183.70 m²

"OUR EXPERIENCE IS YOUR GUARANTEE"