



REF: # 11399

TORRE PACHECO (TORREPACHECO)



#### INFO

PRICE:	233.000 €
PROPERTY TYPE:	Penthouse
CITY:	Torre Pacheco (Torrepacheco)
BEDROOMS:	3
Bathrooms:	2
Build ( m2 ):	107
Plot ( m2 ):	-
Terrace ( m2 ):	108
Year:	-
Floor:	-
Old price	-



#### DESCRIPTION

**NEW BUILD PENTHOUSES IN TORRE-PACHECO** New Build residential complex of apartments in Torre Pacheco (Murcia) in the heart of Costa Cálida. The second phase has 25 apartments and penthouses with 2 and 3 bedrooms. Modern apartments with open plan kitchen with spacious and bright living-dining room with access to a large terrace. Modern penthouses has private solarium. An options underground parking space and storage room at an extra cost. Modern complex with communal swimming pool and garden areas. All the comforts are at your fingertips. There are supermarkets, pharmacies, banks, schools, bars, restaurants, the beach and the airport are just a few minutes away. There is also a golf club in town very close to the apartments and there are several golf courses within a 10-25 minute drive from the apartments. The AP-7 highway is also close by and the N-332 is also very easy to access, so you can easily travel to other regions such as Pilar de la Horadada, San Pedro del Pinatar, Orihuela Costa, Torrevieja, Alicante, etc. The Murcia Corvera international airport is 20 minutes away, Alicante airport about an hour away.

#### ENERGETIC CERTIFIED



**VIEWS**

- Panoramic views

**AIRCONDITIONING**

- Central airconditioning

**PARKING**

Parking no Cars: 1

**GARDEN AND  
TERRACES**

- Fenced

**EXTRA**

- Lift











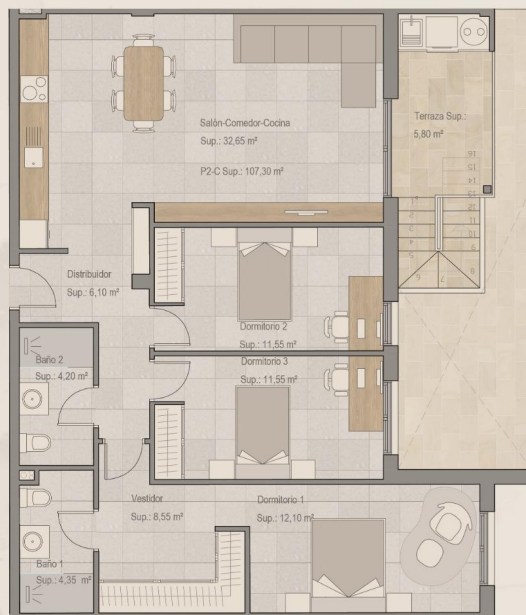
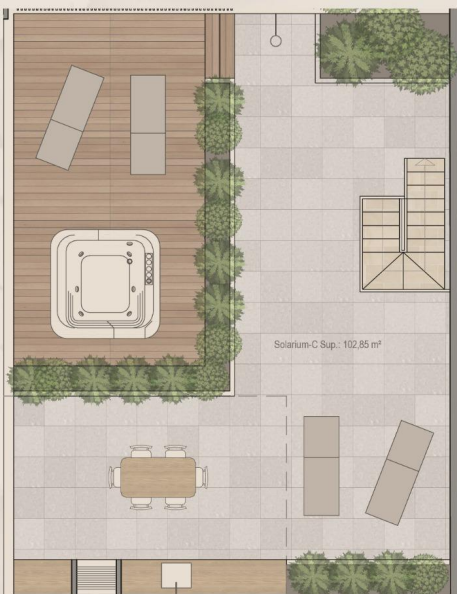






# SUPERFICIES ÚTILES PLANTA SEGUNDA C

Salón-Comedor-Cocina	32,65 m²	P2-C Sup. Total	107,30 m²
Distribuidor	6,10 m²	Solarium-C Sup. Total	102,85 m²
Dormitorio 1	12,10 m²		
Vestidor	8,55 m²		
Dormitorio 2	11,55 m²		
Dormitorio 3	11,55 m²		
Baño 1	4,35 m²		
Baño 2	4,20 m²		
Terraza	5,80 m²		



# SUPERFICIES ÚTILES PLANTA CUBIERTA

SOLARIUM-A	103,90 m²
SOLARIUM-B	93,30 m²
SOLARIUM-C	102,85 m²
SOLARIUM-D	93,90 m²
SOLARIUM-E	106,40 m²
SOLARIUM-F	92,17 m²
SOLARIUM-G	112,56 m²
SOLARIUM-H	89,85 m²
SOLARIUM-I	84,65 m²
SOLARIUM-J	84,65 m²
SOLARIUM-K	113,70 m²
SOLARIUM-L	113,70 m²



"OUR EXPERIENCE IS YOUR GUARANTEE"