



REF: # 11305

COSTA MURCIA



INFO

PRICE:	220.000 €
PROPERTY TYPE:	Townhouse
CITY:	Costa Murcia
BEDROOMS:	2
Bathrooms:	2
Build (m2):	75
Plot (m2):	127
Terrace (m2):	75
Year:	
Floor:	1
Old price	-



DESCRIPTION

NEW BUILD TOWNHOUSE IN BALSICAS - with private garden and pool. Set within a magnificent complex this one level townhouse consists of 2 bedrooms, 2 bathrooms open plan kitchen/dining area, 20m2 terrace, 55m2 solarium with a private garden and swimming pool. All properties are ground floor, with terrace area and a spacious solarium, which will allow the enjoyment of sunlight all year round. They are exceptional properties with high qualities, such as elevated living room ceiling and integrated water fall in pool. Balsicas is a thriving town with many bars, restaurants and shops and has excellent public transport links. The main Balsicas Train station is a 10-minute walk from this property, giving you easy access to Murcia and Cartagena. The beaches of the Mar Menor are a 15-minute drive away, and the airports of Corvera and Alicante being 20 minutes and 1 hour.

ENERGETIC CERTIFIED



STYLE <ul style="list-style-type: none">• Modern	VIEWS <ul style="list-style-type: none">• Panoramic views	AIRCONDITIONING <ul style="list-style-type: none">• Central airconditioning	DISTANCE TO : <div>Beach : +10 Km</div> <div>Airport: 30 Km</div>
FURNITURE <ul style="list-style-type: none">• Not furnished	PARKING <div>Parking no Cars: 1</div>	FLOORING <ul style="list-style-type: none">• Tile floors• Stone floors	KITCHEN <ul style="list-style-type: none">• Open kitchen
GARDEN AND TERRACES <ul style="list-style-type: none">• Private garden	EXTRA <ul style="list-style-type: none">• Reinforced door• Double glazed windows		

PROPERTY GALLERY

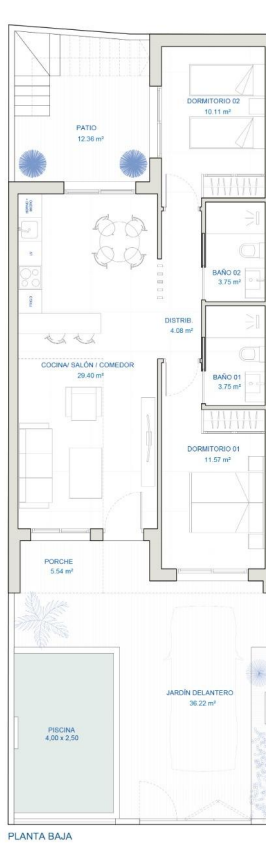




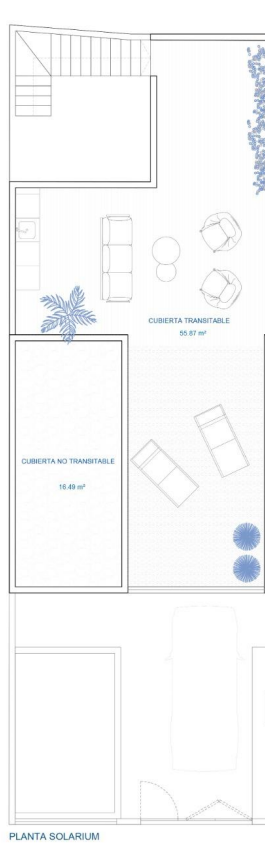








PLANTA BAJA



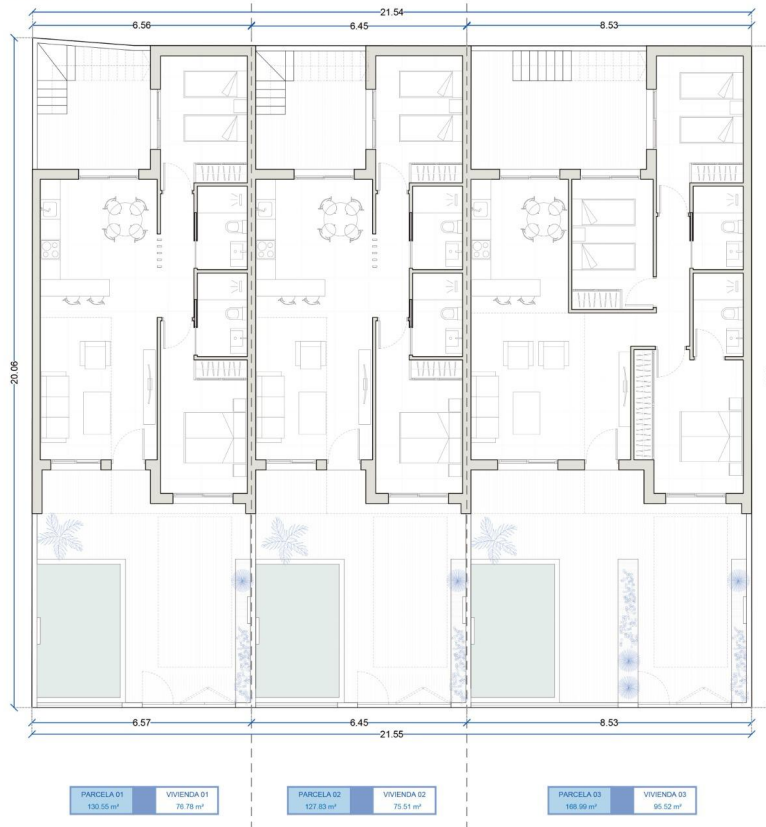
PLANTA SOLARIUM

PARCELA 01	VIVIENDA 01
130.55 m²	76.78 m²

S. CONSTRUIDA VIVIENDA	73.91 m²
S. CONSTRUIDA PORCHE (50%)	2.77 m²

TOTAL SUPERFICIE CONSTRUIDA	76.68 m²
TOTAL SUPERFICIE PARCELA	130.55 m²

PLANTA BAJA GENERAL



PARCELA 01	VIVIENDA 01
130.55 m²	76.78 m²

PARCELA 02	VIVIENDA 02
127.63 m²	75.51 m²

PARCELA 03	VIVIENDA 03
168.99 m²	95.52 m²





"OUR EXPERIENCE IS YOUR GUARANTEE"