



REF: # 11285

ALICANTE (FLORIDA BAJA)



#### INFO

PRICE:	305.000 €
PROPERTY TYPE:	Penthouse
CITY:	Alicante (Florida baja)
BEDROOMS:	2
Bathrooms:	2
Build ( m2 ):	88
Plot ( m2 ):	-
Terrace ( m2 ):	-
Year:	-
Floor:	-
Old price	-



#### DESCRIPTION

**NEW BUILD RESIDENTIAL COMPLEX IN ALICANTE CITY** New Build residential complex of 61 apartments and penthouses with 2, 3 and 4 bedrooms in the neighbourhood of La Florida, Alicante. Each property has its own parking space and storage room. Residential has communal rooftop solarium with swimming pools for adults and children, green areas and chill-out zones and communal garden with playground on ground floor. Complex benefits from the light of the city and its privileged climate. In addition, its advanced A+ energy efficiency system makes it totally sustainable. The district of La Florida is one of the most emblematic neighbourhoods of Alicante's capital, a district characterised by its skilful combination of narrow streets with wide avenues and charming squares, all of which are full of neighbourhood life, where local festivals and traditions are very popular, and where traditional businesses coexist with innovative shops and all kinds of services. In this way, the district is perfectly connected to the accesses to the motorway. In addition, several bus lines make it possible to reach the city centre in

no more than 10-15 minutes. Along the streets that make up the district, you can enjoy the widest range of leisure and restaurant options. Having a coffee, choosing a restaurant, having a drink, or doing all kinds of shopping is within easy reach at any time. From small local shops, through food markets, to large supermarket chains and hypermarkets, the residents of La Florida have at their disposal a wide variety of establishments where they can fill their shopping basket with the best quality products, all with the convenience of being close to home. In addition, every Thursday and Saturday, the adjoining district of Florida-Babel, just a few minutes' walk away, offers a traditional street market. Florida offers its residents educational centres for all ages. Nurseries and kindergartens, primary and secondary schools, and several secondary schools make it possible for all parents to provide enough for their children to study in the neighbourhood. In addition, a special bus line connects the district with the University of Alicante on a daily basis.



## VIEWS

- Panoramic views

## PROPERTY GALLERY



























## Superficies

### VIVIENDA H - 2D Planta Atico

#### SUPERFICIES ÚTILES

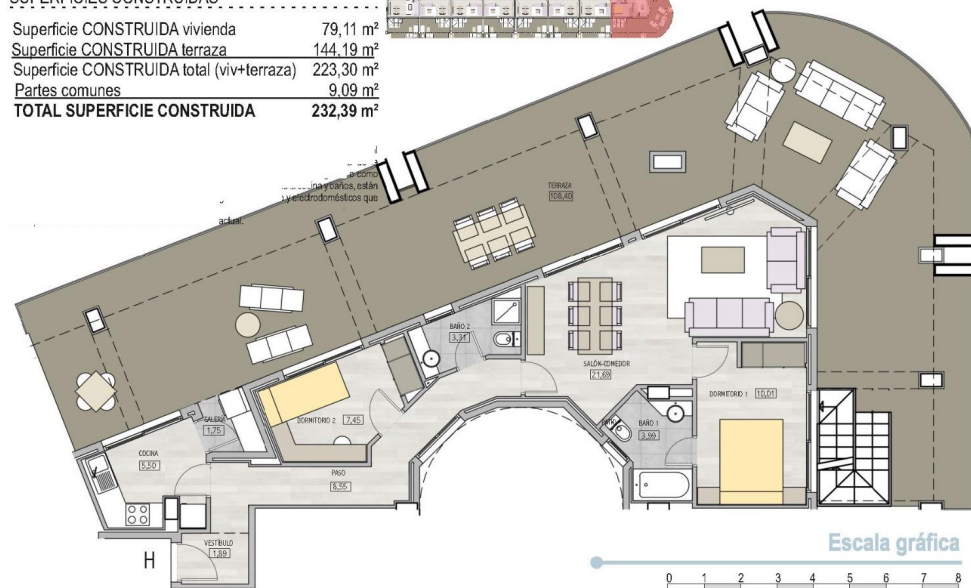
Superficie ÚTIL vivienda	64,14 m <sup>2</sup>
Superficie ÚTIL terraza (100%) Atico	108,40 m <sup>2</sup>
Superficie ÚTIL terraza (100%) Cubierta	29,61 m <sup>2</sup>

#### SUPERFICIES CONSTRUIDAS

Superficie CONSTRUIDA vivienda	79,11 m <sup>2</sup>
Superficie CONSTRUIDA terraza	144,19 m <sup>2</sup>
Superficie CONSTRUIDA total (viv+terrazza)	223,30 m <sup>2</sup>
Partes comunes	9,09 m <sup>2</sup>
<b>TOTAL SUPERFICIE CONSTRUIDA</b>	<b>232,39 m<sup>2</sup></b>

# EDIFICIO ERANDI

AVDA. SOCIEDAD CULTURAL DEPORTIVA BETIS FLORIDA s/n C/ POETA PASTOR - ALICANTE



## Superficies

### VIVIENDA H - 2D Planta Atico

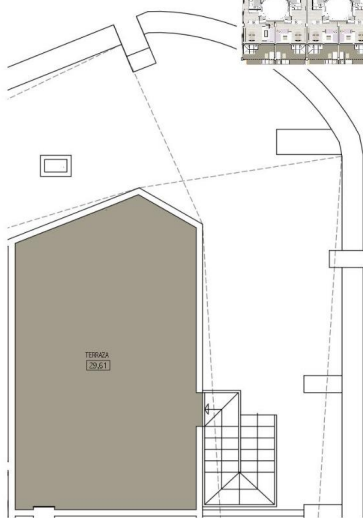
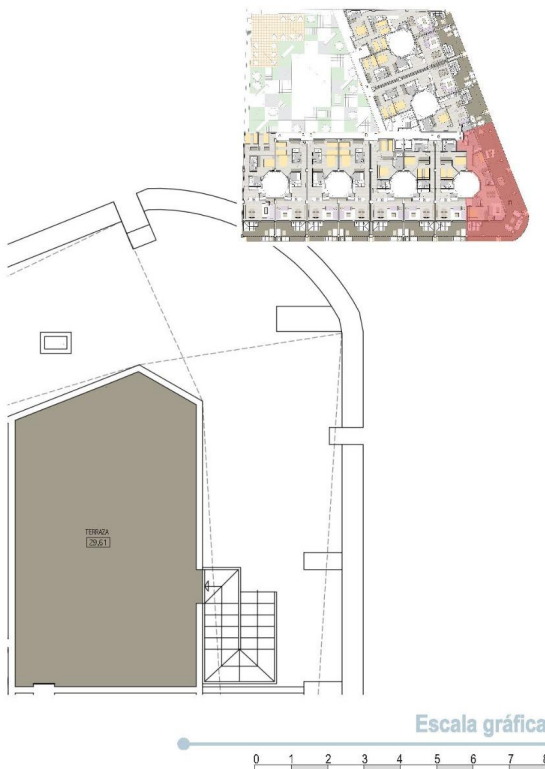
#### SUPERFICIES ÚTILES

Superficie ÚTIL vivienda	64,14 m <sup>2</sup>
Superficie ÚTIL terraza (100%) Atico	108,40 m <sup>2</sup>
Superficie ÚTIL terraza (100%) Cubierta	29,61 m <sup>2</sup>

#### SUPERFICIES CONSTRUIDAS

Superficie CONSTRUIDA vivienda	79,11 m <sup>2</sup>
Superficie CONSTRUIDA terraza	144,19 m <sup>2</sup>
Superficie CONSTRUIDA total (viv+terrazza)	223,30 m <sup>2</sup>
Partes comunes	9,09 m <sup>2</sup>
<b>TOTAL SUPERFICIE CONSTRUIDA</b>	<b>232,39 m<sup>2</sup></b>

**Advertencia legal.** El presente documento (plano) no es definitivo. Se ha elaborado conforme al anteproyecto del edificio, por lo que puede sufrir modificaciones como consecuencia de la tramitación de la licencia de obras, o por cualquier tipo de exigencias técnicas o legales, o como consecuencia del desarrollo de la obra. Todo el mobiliario, en especial el de la cocina y baños, están dibujados como ejemplos de distribución. Solo se entregará el mobiliario y electrodomésticos que se especifican en la memoria comercial del edificio. Es un plano meramente informativo sin contenido contractual.



## VIVIENDA TIPO H

2 DORMITORIOS

61 VIVIENDAS CON GARAJES Y TRASTEROS

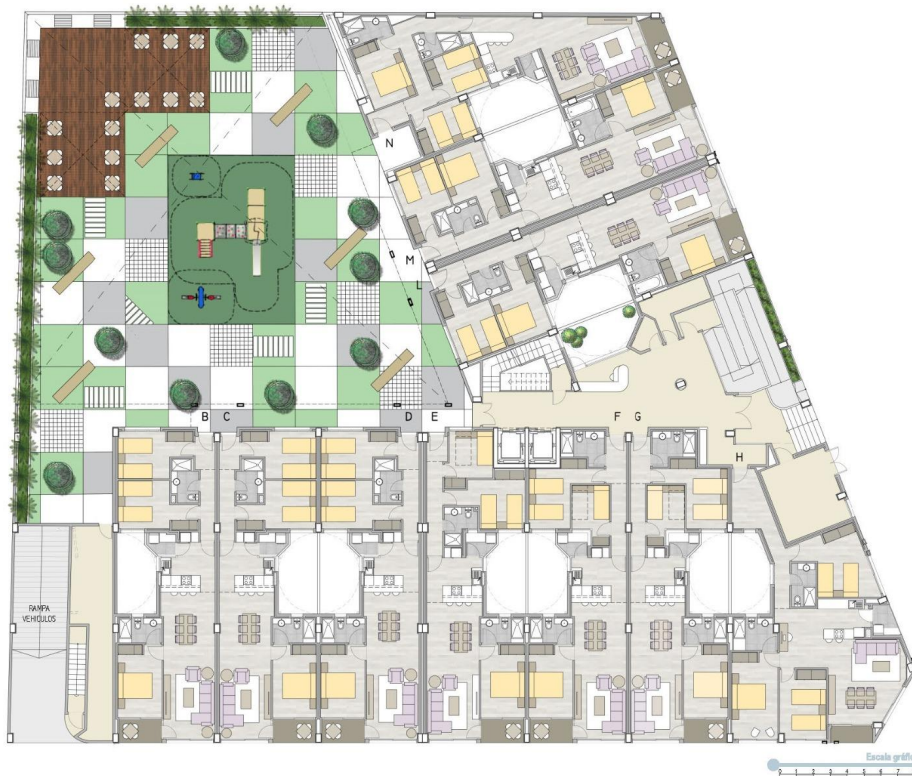
## VIVIENDA TIPO H

2 DORMITORIOS

61 VIVIENDAS CON GARAJES Y TRASTEROS

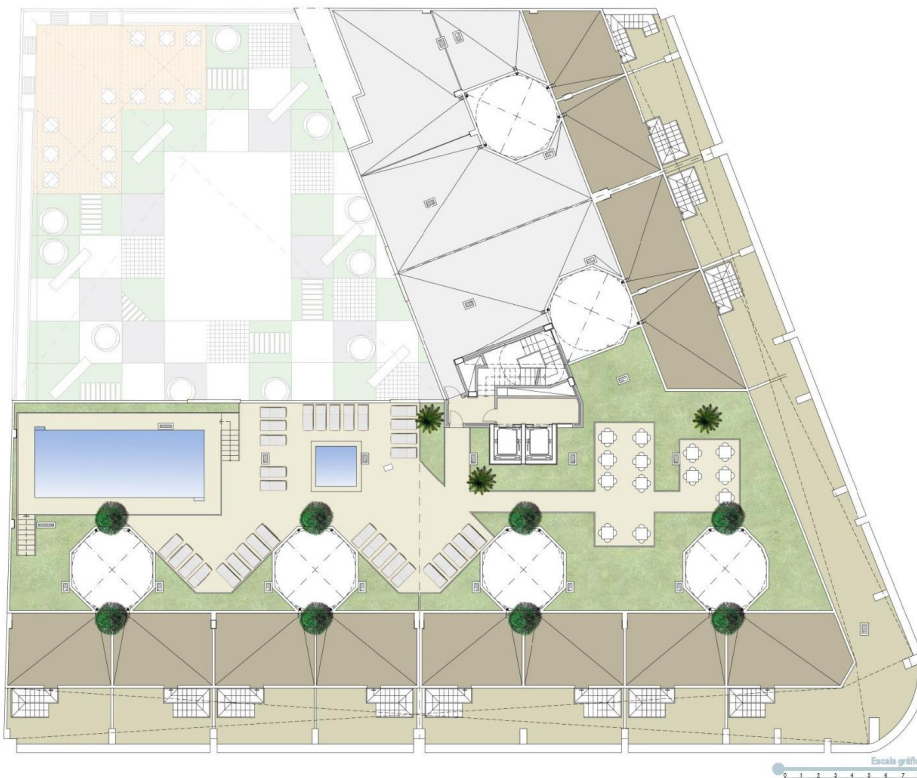
**PLANTA BAJA**

61 VIVIENDAS CON GARAJES Y TRASTEROS



**PLANTA CUBIERTA**

61 VIVIENDAS CON GARAJES Y TRASTEROS



**"OUR EXPERIENCE IS YOUR GUARANTEE"**