



REF: # 11267

CALPE/MORAIRA



INFO

PRICE:	329.000 €
PROPERTY TYPE:	Penthouse
CITY:	Calpe/Moraira
BEDROOMS:	3
Bathrooms:	2
Build (m2):	87
Plot (m2):	-
Terrace (m2):	-
Year:	-
Floor:	-
Old price	-



DESCRIPTION

BEAUTIFUL PENTHOUSES WITH SEA VIEWS IN CALPE Beautiful apartments on the very first line of La Fossa beach in Calpe. Apartments with 1, 2 and 3 bedrooms fully furnished, an equipped bathrooms, an open and equipped kitchen and living-dining room. 2 floors penthouse with 3 bedrooms, 2 bathrooms with terraces which offers magnificent sea views. You can also contemplate beautiful views of Las Salinas. Parking spaces available at an extra cost. In its common areas it has a swimming pool for adults and children and jacuzzi. An incredible opportunity for lovers of the sea. Calpe, one of the towns of La Marina Alta, lies on the northern coast of the province of Alicante, surrounded by the towns of Altea, Benidorm, Teulada-Moraira, Benissa. Calpe has a wonderful mixture of old Valencian culture and modern tourist facilities. It is a great base from which to explore the local area or enjoy the many local beaches. Calpe alone has three of the most beautiful sandy beaches on the coast. Calpe also has two Sailing Clubs: Real Club Náutico de Calpe and Club Náutico de Puerto Blanco. Fishing village of Calpe now transformed into a tourist magnet, the town sits in an ideal location,

easily accessed by the A7 motorway and the N332 that runs from Valencia to Alicante; its approximately 1 hour drive from the airport at Alicante and 1,5 hours to Valencias airport.



VIEWS

- Panoramic views

PROPERTY GALLERY



















46A

ÁTICO DÚPLEX / **DUPLEX PENTHOUSE**
 3 DORMITORIOS / 3 BEDROOMS
 PLANTA 6ª / 6th FLOOR
 ESCALERA 4 / STAIR 4



PLANTA BAJA
LOW LEVEL

SUPERFICIES / SURFACES

Planta baja / low level

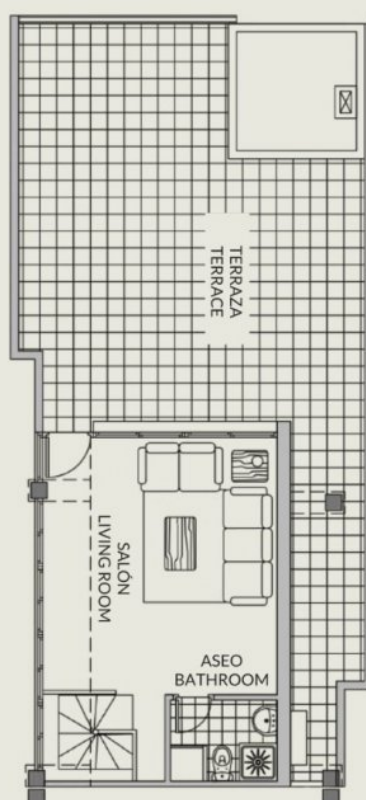
Superficie construida <i>Built surface</i>	60,30m2
Terraza cubierta <i>Covered terrace</i>	7,75m2
Terraza descubierta <i>Outdoor terrace</i>	2,45m2

Planta alta / Top floor

Superficie construida <i>Built surface</i>	27,25m2
Terrazas descubierta <i>Outdoor terrace</i>	61,65m2

Total ático / Total Penthouse

Superficie construida <i>Built surface</i>	87,55m2
Terraza cubierta <i>Covered Terrace</i>	7,75m2
Terraza descubierta <i>Outdoor Terrace</i>	64,10m2
Elementos comunes <i>Communal areas</i>	11,06m2
Superficie total <i>Total area</i>	170,46m2



PLANTA ALTA
TOP FLOOR

"OUR EXPERIENCE IS YOUR GUARANTEE"